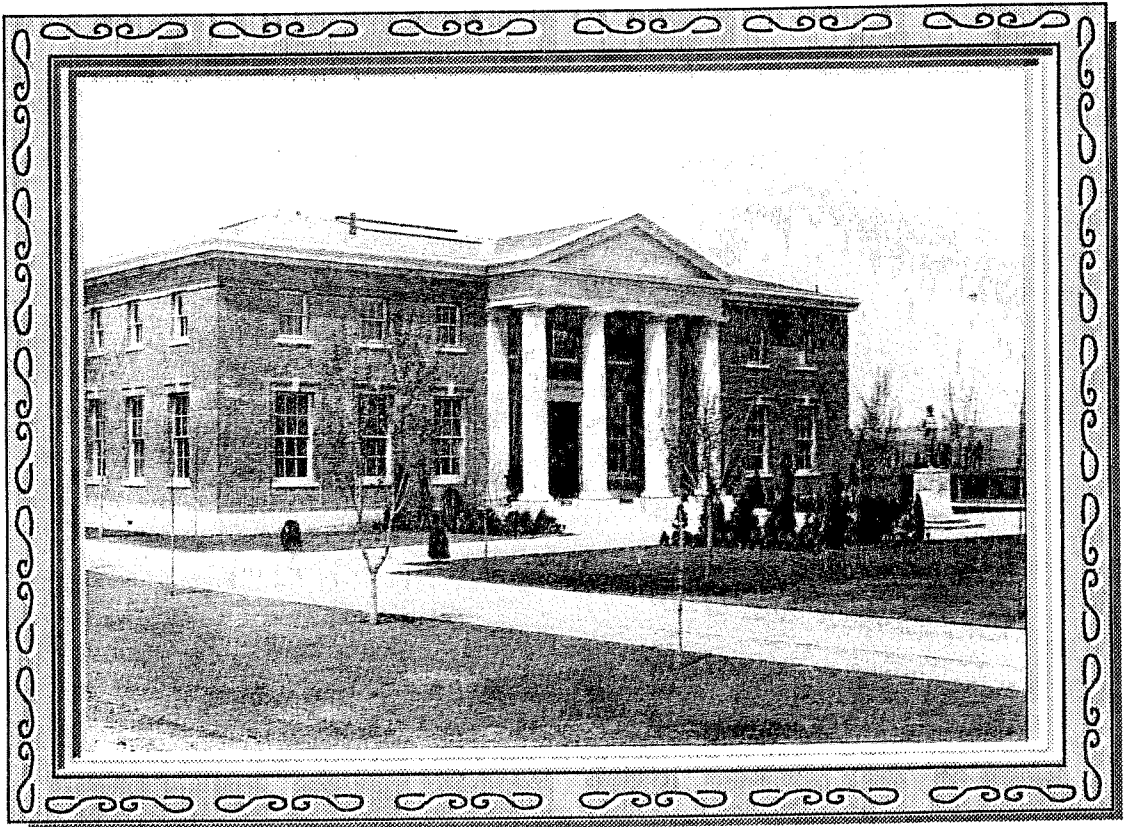


THE MACKAY SCHOOL OF MINES THESIS LIST



1908 - 1991
University of Nevada, Reno

Linda P. Newman

UNIVERSITY AND COMMUNITY COLLEGE SYSTEM OF NEVADA

1992 Board of Regents

Carolyn M. Sparks, *Chairman*
Shelley Berkley
Dorothy Gallagher
Jill Derby
Lonnie Hammargren
James Eardley
Daniel J. Klaich
Joseph M. Foley
June Whitley
Mark H. Dawson, *Chancellor*

UNIVERSITY OF NEVADA, RENO

Joseph N. Crowley, *President*

MACKAY SCHOOL OF MINES

James L. Hendrix, *Dean*

NEVADA BUREAU OF MINES AND GEOLOGY

Jonathan G. Price, *Director/State Geologist*

SCIENTIFIC RESEARCH STAFF

MINERAL RESOURCES AND GEOCHEMISTRY

Harold F. Bonham, Jr., *Research Geologist*
Stephen Castor, *Industrial-Minerals Geologist*
Fred Breit, *Graduate Research Assistant*
Larry J. Garside, *Research Geologist*
Liang-Chi Hsu, *Geochemist*
Daphne D. LaPointe, *Geologist*
Paul J. Lechler, *Chief Chemist/Geochemist*
David Davis, *Mineral Preparator/Shop Mechanic*
Mario Desilets, *Assistant Chemist and Quality Assurance Officer*
Bret Pecoraro, *Laboratory Assistant*
Joseph V. Tingley, *Economic Geologist*

ENVIRONMENTAL, ENGINEERING, AND URBAN GEOLOGY

John W. Bell, *Engineering Geologist*
Craig M. dePoio, *Research Geologist*
Donald C. Helm, *Research Hydrogeologist* (Las Vegas Branch Office)
Tom Burbey, *Graduate Student* (USGS)
Daw-long Jeng, *Graduate Research Assistant*
Jiang Li, *Graduate Research Assistant*
Zhuping Sheng, *Graduate Research Assistant*
Alan R. Ramelli, *Research Geologist*
James G. Rigby, *Engineering Geologist*

GEOLOGIC INFORMATION

Ronald H. Hess, *Geologic Information Specialist*
Lindsay Christensen, *Geographic Information Systems Specialist*
Gary Johnson, *Geographic Information Systems Processor*
Becky Weimer Purkey, *Geologic Information Specialist*
Barbara J. Barton, *Administrative Aid*

ADMINISTRATIVE AND SUPPORT STAFF

PUBLICATION SUPPORT

Rayetta Buckley, *Composing Technician*
Richard Meeuwig, *Editor*
Susan L. Tingley, *Publications Manager/Cartographer*
Larry Jacox, *Geologic Cartographer*
Kris Pizarro, *Geologic Cartographer*
Mati A. Stephens, *Publication Technician*
Janeen Walker, *Geologic Cartographer*

ADMINISTRATION, CLERICAL SUPPORT, AND PUBLICATION SALES

Phyllis Churchill, *Account Clerk*
Arlene Kramer, *Sales Manager*
Cheryl B. Richardson, *Management Assistant*
Terri M. Henley, *Administrative Aid*
Crystal M. McCay, *Administrative Aid*



Editing: Dick Meeuwig
Front cover: Larry Jacox
Typesetting:
By: Rayetta Buckley
On: Macintosh, QuarkXPress
Text: Helvetica, 10 pt.
Heads: Helvetica Bold, 18 pt.
Paste-up: Rayetta Buckley

Printing:

First edition, first printing, 1992
Copies: 500
By: DynaGraphics,
2001 Timber Way, Reno, NV
Stock, cover: Simpson Sundance Felt, Cover 65 lb, Sky Blue
Stock, text: Cascade White Offset, 60 lb.
Binding: saddlestitch

UNIVERSITY OF NEVADA, RENO
MACKAY SCHOOL OF MINES

NEVADA BUREAU OF MINES AND GEOLOGY
SPECIAL PUBLICATION L-10

MACKAY SCHOOL OF MINES THESIS LIST 1908–1991

Linda P. Newman
Mines Librarian

1992

THE MACKAY SCHOOL OF MINES

THESIS LIST 1908-1991

In 1908 the Mackay School of Mines building was dedicated to John W. Mackay in whose honor the school was named.

During the 1920s the mines collection of research materials found a home in the Mackay Research Room of the Mackay School of Mines building. A formal library with librarian has been available to assist the School with its research since 1952. The librarian prepared and made available to the public an annually updated author list of the MSM theses. The popularity of this list resulted in the publication in 1985 of a compilation of 384 citations, with a subject index and degree listing, called the 75th Anniversary Edition in honor of the oldest extant graduate paper. Substantial growth in the Supplemental List to the 1985 publication has required a new edition.

Copies of the MSM graduate papers, in either paper or microfilm format, are also available in the University Archives, located in the Getchell Library building. The Archives assistance in verifying theses is appreciated. We are also indebted to Anne Amaral for cataloging efforts to expedite this project.

Not included in this compilation of MSM theses and dissertations are papers submitted as part of an M.S. program, but not as theses. These papers are not received by the Graduate School or placed in the UNR Archives, but may be available in the Mines Library. Also not included in this list are the theses of the Computer Science Department, recently incorporated in the Mackay School of Mines.

The subject terms used in the Subject Index were derived in part from the cataloging terminology of the Library of Congress and combined with additional terms that I consider useful.

Linda P. Newman, *Mines Librarian*

How to Obtain Mackay School of Mines Theses

All titles citing the University Microfilms International (UMI) order number may be obtained on microform or paper copy from UMI, 300 N. Zeeb Road, Ann Arbor, MI 48106. Theses may be ordered by phone by calling 800-521-3042.

Theses may be borrowed through the Interlibrary Loan Department, UNR Library, Mail Stop 322, University of Nevada, Reno, Nevada 89557.

Copies of theses are not sold by the Mines Library, the Mackay School of Mines, or the Nevada Bureau of Mines and Geology.

How to Obtain Mackay School of Mines Thesis Lists

Copies of this list are available from the Nevada Bureau of Mines and Geology sales office. Address requests to: Nevada Bureau of Mines and Geology, Mail Stop 178, University of Nevada, Reno, Nevada 89557 or call 702-784-6691.

Annual supplemental *Mackay School of Mines Thesis Lists* will be available free upon request in person or by mail from the Mines Library or in person only from the Nevada Bureau of Mines and Geology sales office.

Author List—page 3

Degree List—page 34

Subject Index—page 35

MACKAY SCHOOL OF MINES

Theses by Authors

1908-1991

Thesis 001 = UNR library call number

UMI 13-00000 = UMI order number

List
Number

1. **Abdullah**, S. K. M., 1966, Geology of the southern part of the Sand Springs Range, Churchill County, Nevada: M.S. Geology, 53p.
Thesis 34
2. **Abraham**, Daniel, 1988, Electrochemical corrosion studies of lead and steel in desert soils: M.S. Metallurgical Engineering, 52p.
Thesis 2334 UMI 13-34146
3. **Abrams**, Gerard Joseph, 1979, Geology and ore deposits of the Union district southern Shoshone Mountains, Nye County, Nevada: M.S. Geology, 87p.
Thesis 1402 UMI 13-15227
4. **Acholonu**, Christian Chitomogu, 1983, Distribution of copper, cobalt, nickel between alloys and silica-unsaturated iron slags: M.S. Metallurgical Engineering, 104p.
Thesis 1769 UMI 13-21997
5. **Ahmadiantehrani**, Mojtaba, 1991, Hypochlorite pretreatment in heap leaching of a low grade carbonaceous gold ore: Ph.D., Metallurgical Engineering, 164p.
Thesis 2893 UMI 92-20356
6. **Alkaseh**, Ahmidi Ali, 1979, Hydrogeological and hydrogeochemical aspects of the Jalo area, Libya: M.S. Hydrology, 73p.
Thesis 1361 UMI 13-14544
7. **Allard**, Steven Geoffrey, 1982, Aqueous surface chemistry of chromite: M.S. Metallurgical Engineering, 96p.
Thesis 1626 UMI 13-19017
8. **Allen**, Merrill Peter, 1972, Dissolution and cation exchange studies of asbestos minerals in aqueous media: M.S. Metallurgical Engineering, 87p.
Thesis 621
9. **Alvarez-Ayesta**, José Alfredo, 1987, A probabilistic analysis of the Emerald Bay rock slide, El Dorado County, California: M.S. Geological Engineering, 244p.
Thesis 2275 UMI 13-32565
10. **Amateis**, Larry Joe, 1981, The geology of the Permian Garden Valley Formation, Eureka County, Nevada: M.S. Geology, 99p.
Thesis 1586 UMI 13-17883

List
Number

11. **Amin**, Isam Eldin, 1987, A general mathematical model for the interpretation of tracer data and calculation of transit times in hydrologic systems: Ph.D. Hydrology/Hydrogeology, 83p.
Thesis 2238 UMI 87-28236
12. **Arghin**, Salem Saleh, 1980, Hydrogeology of the Al-Marj Basin, Libya: M.S. Hydrology, 73p.
Thesis 1395 UMI 13-15223
13. **Armstrong**, Charles F., 1967, The moisture balance concept as applied to the American River watershed: M.S. Hydrology, 38p.
Thesis 209
14. **Atkinson**, Gary B., 1973, The effects of the addition of copper to SmCo5 permanent magnets: M.S. Metallurgical Engineering, 50p.
Thesis 744
15. **Aymard**, William H., 1989, Hydrocarbon potential of Yucca Mountain, Nevada: M.S. Geophysics, 126p.
Thesis 2574 UMI 13-39299
16. **Back**, William, 1969, Chemical hydrogeology of the carbonate peninsulas of Florida and Yucatan: Ph.D. Hydrogeology, 71p.
Thesis 375 UMI 70-05526
17. **Baker**, William D., 1988, Applications for pneumatic transport and system design calculations for underground mines: M.S. Mining Engineering, 103p.
Thesis 2333 UMI 13-34157
18. **Banks**, Eric W., 1982, Liquefaction potential at the Naval Weapons Center, China Lake, California: M.S. Geological Engineering, 102p.
Thesis 1708 UMI 13-20163
19. **Bard**, Thomas R., 1980, Hydrothermal alteration in two deep exploratory wells in Dixie Valley, Nevada: M.S. Geology, 92p.
Thesis 1427 UMI 13-15354
20. **Barnes**, James Irvin, 1971, Measurement of mercury in soil gas: An aid to mineral exploration in Nevada: M.S. Geology, 60p.
Thesis 575

21. **Barney**, John James, 1976, Regeneration of waste acid from a new ilmenite treatment process by electro dialysis: M.S. Metallurgical Engineering, 116p.
Thesis 1103 UMI 13-09765
22. **Barr**, Douglass Scott, 1973, The minimization of chlorate production during electrolytic oxidation of molybdenite in aqueous brine solution: M.S. Metallurgical Engineering, 92p.
Thesis 795
23. **Barry**, Jeffrey M., 1985, Hydrogeochemistry of Golden Valley, Nevada and the chemical interactions during artificial recharge: M.S. Hydrology/Hydrogeology, 190p.
Thesis 2054 UMI 13-28241
24. **Basinski**, Paul, 1978, The mineralogy and uranium potential of bedded zeolites in the northern Reese River Valley, Lander County, Nevada: M.S. Geology, 98p.
Thesis 1292 UMI 13-12892
25. **Bateman**, Richard L., 1970, Environmental controls on occurrence and chemistry of ground water in a basic volcanic terrane, eastern Sierra Nevada: M.S. Hydrology, 115p.
Thesis 478
26. **Bateman**, Richard L., 1976, Influence of watershed characteristics on water quality behavior of streams in the eastern Sierra Nevada: Ph.D. Hydrology, 159p.
Thesis 1055 UMI 77-5992
27. **Batra**, Ravi, 1970, Travel-times and crustal structure in the Nevada region from earthquakes, nuclear explosions, and mine blasts: M.S. Geophysics, 78p.
Thesis 509
28. **Behnke**, Jerold J., 1961, Geology of the southern portion of Martin's Ridge, Monitor Range, Nye County, Nevada: M.S. Geology, 42p.
Thesis Tm B419
29. **Behnke**, Jerold J., 1967, Clogging in artificial ground-water recharge operations: Ph.D. Geology, 61p.
Thesis 183 UMI 68-04681
30. **Benham**, Julia Anne, 1982, Geology and uranium content of middle tertiary ash-flow tuffs in the southern Nightingale Mountains and northern Truckee Range, Washoe County, Nevada: M.S. Geology, 112p.
Thesis 1688 UMI 13-19710
31. **Benito**, Hugo Oscar, 1970, Use of multiple correlation for forecasting streamflow: M.S. Hydrology, 51p.
Thesis 516
32. **Benzer**, William B., Jr., 1989, On the use of the variogram for the estimation of rock surface profile fractal dimension: M.S. Geological Engineering, 170p.
Thesis 2582 UMI 13-39319
33. **Bethune**, Angus Y., 1938, Metallurgy for the retreatment of cobalt residue: M.S. Metallurgical Engineering, 83p.
Thesis Tm B563
34. **Bhaduri**, Rahul S., 1987, Lixiviation of refractory ores with diethylamine or ammonium thiosulfate: M.S. Metallurgical Engineering, 89p.
Thesis 2256 UMI 13-13799
35. **Bird**, John Wilbur, 1970, Operational hydrology and reservoir size determination: Ph.D. Hydrology, 131p.
Thesis 484 UMI 71-06024
36. **Blackburn**, Wilbert Howard, 1973, Simulated rainfall studies of selected plant communities and soils in five rangeland watersheds of Nevada: Ph.D. Hydrology, 152p.
Thesis 754 UMI 73-27494
37. **Blair**, Michael L., 1983, Geology of the lower Grider Creek-Grider Ridge area, Siskiyou County, California: M.S. Geology, 128p.
Thesis 1780 UMI 13-22006
38. **Blomquist**, John T., 1971, Current directions in the Diamond Peak Formation, an Upper Mississippian-Lower Pennsylvanian clastic wedge, east-central Nevada: M.S. Geology, 79p.
Thesis 570
39. **Bohm**, Burkhard, 1982, Controls on ground water chemistry in central and western Nevada: Ph.D. Geology, 312p.
Thesis 1731 UMI 83-12488

40. **Bonham**, Harold F., 1963, Areal geology of the northern half of Washoe County, Nevada: M.S. Geology, 83p.
Thesis Tm B714
41. **Bonne'**, Jochanan, 1970, Stochastic simulation of monthly streamflow by a multiple regression model utilizing precipitation data: Ph.D. Hydrology, 114p.
Thesis 497 UMI 71-18644
42. **Boone**, Richard L., 1983, Groundwater recharge and subsurface flow processes on a hillslope in the Clear Creek watershed, eastern Sierra Nevada: M.S. Hydrology, 164p.
Thesis 1772 UMI 13-21994
43. **Booth**, G. Martin, 1960, Heavy mineral study of the Coal Valley sediments in the lower Truckee River canyon, Washoe County, Nevada: M.S. Geology, 69p.
Thesis Tm B725
44. **Borbas**, Steve, 1977, The geology of radioactive mineral occurrences near Marietta, Nevada: M.S. Geology, 73p.
Thesis 1200 UMI 13-11211
45. **Borengasser**, Marcus Xavier, 1989, Structural analysis of eastern Mineral County Nevada using shuttle imaging Radar-B: Ph.D. Geology, 266p.
Thesis 2476 UMI 89-22231
46. **Bortz**, Louis C., 1960, Geology of the Copenhagen Canyon area, Monitor Range, Eureka County, Nevada: M.S. Geology, 56p.
Thesis Tm B739
47. **Bosma-Douglas**, Julia, 1987, Geology and hydrothermal alteration of a portion of the eastern Excelsior Mountains, Mineral County, Nevada: M.S. Geology, 156p.
Thesis 2255 UMI 13-31799
48. **Boughton**, Carol Jean, 1986, Integrated geochemical and hydraulic analyses of Nevada Test Site ground water systems: M.S. Hydrogeology, 135p.
Thesis 2090 UMI 13-28594
49. **Bradhurst**, Stephen Thomas, 1972, Cartographic description of Nevada population: M.S. Geology, 51p.
Thesis 704
50. **Bradley**, Francis Dean, 1920, Elements of mine accounting: Professional Degree of Mining Engineer, 85p.
Thesis Tm B811e
51. **Bratberg**, David, 1980, Hydrogeology of Dodge Flat and its relation to flow and quality changes in the Truckee River: M.S. Hydrology, 100p.
Thesis 1496 UMI 13-16347
52. **Bremner**, Paul R., 1977, Electrorefining of scarp in a basic amine electrolyte: M.S. Metallurgical Engineering, 34p.
Thesis 1152 UMI 13-10362
53. **Brennan**, Peter Anderson, 1968, The geology of the N.A.S.A. Arizona sedimentary test site, Mohave County, Arizona: M.S. Geology, 93p.
Thesis 279
54. **Briggs**, Peter Graham, 1988, The hydraulic transport of minerals in inclined pipes: M.S. Mining Engineering, 133p.
Thesis 2422 UMI 13-35779
55. **Briner**, William D., 1980, Geology of part of the Cucomungo area, Esmeralda County, Nevada: M.S. Geology, 78p.
Thesis 1424 UMI 13-15356
56. **Broadbent**, Robert C., 1980, Numerical modeling of the effects of artificial recharge in Las Vegas Valley, Nevada: M.S. Hydrology, 124p.
Thesis 1484 UMI 13-16360
57. **Bronson**, Brent R., 1987, An engineering analysis of the stability of Slide Mountain, Yosemite National Park, California: M.S. Geological Engineering, 175p.
Thesis 2226 UMI 13-31371
58. **Brooks**, Howard, 1956, Geology of a uranium deposit in the Virginia Mountains, Washoe County, Nevada: M.S. Geology, 50p.
Thesis Tm B873
59. **Bruce**, James L., 1981, Geology of the eastern portion of the Indian Wells Canyon mining district, Kern County, California: M.S. Geology, 133p.
Thesis 1616 UMI 13-18731

60. **Bruce**, Lorraine, 1984, Solute transport in a groundwater system with reversing regional gradients: M.S. Hydrology, 139p.
Thesis 1922 UMI 13-25139
61. **Bruha**, Douglas James, 1983, Paragenetic and fluid-inclusion study of Pb-Zn-Ag mineralization at Mina Teresita, Huachocolpa district, Peru: M.S. Geology, 55p.
Thesis 1831 UMI 13-23487
62. **Bryan**, Dennis Paul, 1972, The geology and mineralization of the Chalk Mountain and Westgate mining districts, Churchill County, Nevada: M.S. Geology, 78p.
Thesis 714
63. **Bryce**, Robert William, 1981, Phosphorus transfer between the liquid and solid phase in Lahontan Reservoir, Nevada: M.S. Hydrogeology, 122p.
Thesis 1589 UMI 13-18139
64. **Buchanan**, Paul K., 1990, Determination of timing of recharge for geothermal fluids in the Great Basin using environmental isotopes and paleoclimate indicators: M.S. Geology, 160p.
Thesis 2648 UMI 13-40742
65. **Buck**, Caroline Jo, 1985, Monitoring acoustic emissions during water flow through granular soils: M.S. Geological Engineering, 128p.
Thesis 1953 UMI 13-25840
66. **Buff**, Paul Jeffrey, 1976, The foraminifera and paleoecology of the Vacaville Shale, Vacaville, California: M.S. Geology, 68p.
Thesis 1054 UMI 13-09362
67. **Bugenig**, Dale C., 1985, Well loss in fractured rock: a comparison of radial-flow and linear-flow analyses: M.S. Hydrogeology, 48p.
Thesis 1960 UMI 13-25847
68. **Burbey**, Thomas J., 1984, Three dimensional numerical simulation of tritium and chloride-36 migration: M.S. Hydrogeology, 124p.
Thesis 1887 UMI 13-24223
69. **Burton**, Stuart Todd, 1991, Modeling the transient horizontal movement of an aquifer based on the Gersevanov-Darcy law: M.S., Geological Engineering, 259p.
Thesis 2857 UMI 13-46768
70. **Butler**, Robert Scott, 1979, Geology of La Plata Canyon, Stillwater Range, Nevada: M.S. Geology, 102p.
Thesis 1379 UMI 13-14512
71. **Byer**, Robert Martin, 1991, A carbon-14 calibrated discrete-state compartment model of the groundwater flow system, Yucca Mountain and vicinity, Nevada-California: M.S., Hydrology/Hydrogeology, 260p.
Thesis 2784 UMI 13-44819
72. **Byrkit**, James W., 1956, Operations at New Cornelia copper smelter of Phelps Dodge Corporation: Degree of Metallurgical Engineer, 10p.
Thesis Tm B995
73. **Cameron**, Donald Caleb, 1928, Some problems in the treatment of old-time tailing: Professional Degree of Mining Engineer, 27p.
Thesis Prof. 10
74. **Carlson**, David Elton, 1978, A study of residential water consumption in Reno and Sparks: M.S. Hydrology, 78p.
Thesis 1277 UMI 13-12448
75. **Carnahan**, Chalton L., 1975, Non-equilibrium thermodynamic treatment of transport processes in ground-water flow: Ph.D. Hydrology, 83p.
Thesis 937 UMI 76-11182
76. **Carpenter**, Jay Arnold, 1911, The design for the reconstruction of a mill: Professional Degree of Mining Engineer, 31p.
Thesis Prof. 11
77. **Carraher-Muto**, Ruth, 1979, Structural geology and related mineralization of the Antelope Springs district, Pershing County, Nevada: M.S. Geology, 72p.
Thesis 1382 UMI 13-14513
78. **Carroll**, James C., 1971, Mining economics of copper-zinc deposits in the Foothill copper belt of the Sierra Nevada in California: M.S. Mining Engineering, 122p.
Thesis 602
79. **Cartwright**, Keros, 1961, A study of the Lake Lahontan sediments in the Winnemucca area, Nevada: M.S. Geology, 52p.
Thesis Tm C329

80. **Carver**, Gary Alen, 1969, Quaternary tectonism and surface faulting in the Owens Lake Basin, California: M.S. Geology, 105p.
Thesis 382
81. **Caskey**, S. John, 1991, Mesozoic and Cenozoic structural geology of the CP Hills Nevada Test Site, Nye County, Nevada: and regional implications: M.S., Geology, 166p.
Thesis 2852 **UMI 13-46381**
82. **Castor**, Stephen Baird, 1972, Geology of the central Pine Nut and northern Buckskin Ranges, Nevada — A study of Mesozoic intrusive activity: Ph.D. Geology, 290p.
Thesis 676 **UMI 73-04091**
83. **Castro Escamilla**, Raul Ramon, 1991, Source functions, site response and spectral attenuation in the Guerrero, Mexico, subduction zone: Ph.D., Geophysics, 123p.
Thesis 2793 **UMI 91-31270**
84. **Cave**, Deborah L., 1987, Geochemical reactions between primary-treated sewage and volcanic phase assemblages near Tahoe City, California: M.S. Hydrology/Hydrogeology, 165p.
Thesis 2235 **UMI 13-31798**
85. **Cernoch**, Barry Michael, 1991, Joint roughness and fractal geometry: M.S., Geological Engineering, 84p.
Thesis 2797 **UMI 13-44813**
86. **Charlton**, Douglas W., 1974, Structures of the protrusive rhyodacite domes of the Julcani volcanic center, Peru: M.S. Geology, 61p.
Thesis 846
87. **Chavez**, David Eliseo, 1980, Surface wave dispersion in the Great Basin and northern Central America: M.S. Geophysics, 66p.
Thesis 1473 **UMI 13-16001**
88. **Chen**, Beiyi, 1990, Modeling of sulfide capacities in binary and ternary silicate slags: M.S. Metallurgical Engineering, 65p.
Thesis 2615 **UMI 13-40752**
89. **Chen**, Hsiu-hsiung, 1978, A hydrologic and economic model for the optimization of irrigation water utilization on the Humboldt River system: Ph.D. Hydrology, 256p.
Thesis 1295 **UMI 79-12429**
90. **Chenevey**, Michael John, 1989, Reconnaissance geologic mapping of the Kane Springs Wash Volcanic Center, Lincoln County, Nevada, using multispectral thermal infrared imagery: M.S. Geology, 131p.
Thesis 2550 **UMI 13-38575**
91. **Chini**, Jaffar, 1973, Electrokinetic properties of emulsions and their significance in the emulsion flotation of minerals: M.S. Metallurgical Engineering, 81p.
Thesis 751
92. **Chipp**, Eddie Ray, 1969, The geology of the Klondike mining district, Esmeralda County, Nevada: M.S. Geology, 52p.
Thesis 351
93. **Chuck**, Donald M., 1990, The effects of porosity on the acoustic emission signatures of Yucca Mountain tuffs: M.S. Geological Engineering, 133p.
Thesis 2612 **UMI 13-40718**
94. **Churan**, Kenneth R., 1989, A transient input discrete-state compartment model of groundwater flow in the Ojo Alamo Sandstone, San Juan Basin, New Mexico: M.S. Hydrology/Hydrogeology, 115p.
Thesis 2530 **UMI 13-38331**
95. **Cinque**, Mark J., 1979, Geology and uranium mineralization of the Hallelujah Junction, Red Rock Canyon area, Lassen County, California, Washoe County, Nevada: M.S. Geology, 117p.
Thesis 1367 **UMI 13-14521**
96. **Clark**, Wesley I., 1962, X-ray fluorescent determination of trace elements on ion exchange membranes: M.S. Geology, 78p.
Thesis Tm C596x
97. **Clayton**, Carol Aurelia, 1981, The geology of the West Walker Canyon area, Mono County, California with emphasis on late magmatic stage veining: M.S. Geology, 88p.
Thesis 1518 **UMI 13-17086**
98. **Cline**, Robert Bruce, 1967, Fusulinid paleontology and paleoecology of eastern Nevada: M.S. Geology, 83p.
Thesis 172

99. **Cochran**, Gilbert Francis, 1973, Policy development and evaluation in conjunctive ground and surface water management: Ph.D. Hydrology, 251p.
Thesis 739 UMI 73-23184
100. **Cohen**, Donald K., 1980, The geology and petrography of the Millet Ranch plutons: A mixed magma: M.S. Geology, 62p.
Thesis 1412 UMI 13-15224
101. **Collagan**, Robert Bruce, 1958, Stratigraphic differentiation of selected Nevada black shales by inorganic analyses: M.S. Geology, 78p.
Thesis Tm C697
102. **Collins**, Amy Hutsinpiller, 1988, Geological applications of remote sensing in the Virginia Range, Nevada: Ph.D. Geology, 241p.
Thesis 2408 UMI 89-11673
103. **Collins**, Daniel E., 1977, Metamorphic geology of a portion of the Bagdad mining district, Yavapai County, Arizona: M.S. Geology, 113p.
Thesis 1178 UMI 13-11301
104. **Collord**, E. J., 1980, Geology and ore deposits of Sand Springs district, Churchill County, Nevada: M.S. Geology, 63p.
Thesis 1426 UMI 13-15355
105. **Connell**, Larry E., 1985, The geology of the northern Butte Mountains, White Pine County, Nevada: M.S. Geology, 191p.
Thesis 1949 UMI 13-25827
106. **Cooper**, Clay A., 1990, Numerical simulation of gas flow through unsaturated fractured rock at Yucca Mountain, Nevada: M.S. Hydrology/Hydrogeology, 81p.
Thesis 2608 UMI 13-39569
107. **Cordova**, Tommy, 1969, Active faults in Quaternary alluvium, and seismic regionalization, in a portion of the Mount Rose Quadrangle, Nevada: M.S. Geological Engineering, 53p.
Thesis 407
108. **Cornwall**, Diane Elinor, 1979, Paleocology of Upper Triassic bioherms in the Pilot Mountains, Mineral County, west-central Nevada: M.S. Geology, 138p.
Thesis 1312 UMI 13-13581
109. **Coulibaly**, Drissa A., 1982, Effects of stemming on open pit bench blasting: M.S. Mining Engineering, 94p.
Thesis 1707 UMI 13-20164
110. **Cox**, John Waldron, 1981, Geology and mineralization of the Atlanta district, Lincoln County, Nevada: M.S. Geology, 83p.
Thesis 1576 UMI 13-17760
111. **Crain**, John Russell, 1961, Study of some x-ray properties of unheated and heated plagioclase feldspars: M.S. Geology, 40p.
Thesis Tm C887
112. **Crone**, Walter Richard, 1982, The use of Fe/Mn oxide-rich fracture coatings in the geochemical exploration for precious metal deposits, a comparison with standard rock and soil geochemistry: M.S. Geology, 93p.
Thesis 1647 UMI 13-18994
113. **Cunningham**, Alfred B., 1977, Modeling and analysis of hydraulic interchange of surface and ground water: Ph.D. Hydrology, 174p.
Thesis 1136 UMI 77-25079
114. **Cutler**, Sandra Kay, 1979, New Upper Jurassic foraminifera from the Knoxville Formation, Elk Creek, California: M.S. Geology, 46p.
Thesis 1366 UMI 13-14505
115. **Dabbagh**, Ali A., 1979, Study of thermal stress effects of hydraulic fracturing of rock: M.S. Geology, 95p.
Thesis 1385 UMI 13-14522
116. **Dale**, Michael W., 1987, Hydrology of the southern part of the Peavine Mountain-Silver Lake sub-basin: M.S. Hydrogeology, 124p.
Thesis 2268 UMI 13-32289
117. **Davis**, David Alan, 1990, The Paleozoic-Mesozoic unconformity of the northern Sierra Nevada, California, and its significance: M.S. Geology, 319p.
Thesis 2636 UMI 13-40757
118. **Davis**, Dudley L., 1948, Anaconda's operation at Darwin mines, Inyo County, California: Professional Degree of Mining Engineer, 11p.
Thesis 38

119. **Davis**, Robert Martin, 1972, Geomorphic base for recent urban expansion in the Sacramento urban area: M.S. Geology, 49p.
Thesis 643
120. **Davis**, Terry E., 1962, The optical properties of the natural plagioclase feldspars and their heat treated modifications: M.S. Geology, 24p.
Thesis Tm D264
121. **Day**, Garrett Arthur, 1987, Source of recharge to the Beowawe geothermal system north-central Nevada: M.S. Hydrology/Hydrogeology, 82p.
Thesis 2170 UMI 13-29973
122. **Decker**, Donald James, 1972, Geology and ore deposits of the Arabia district, Pershing County, Nevada: M.S. Geology, 44p.
Thesis 665
123. **Defilippi**, Carl Edmund, 1981, The continuous leaching of zinc concentrate with chlorine in a bubble-cap tray column: M.S. Metallurgical Engineering, 81p.
Thesis 1581 UMI 13-17761
124. **DeGuire**, Marcel Francois, 1974, A study of the eutrophication of the surface waters of Lake Pyramid: M.S. Metallurgical Engineering, 45p.
Thesis 816
125. **Dempsey**, Earle V., 1956, Metallurgy of the Blackbird cobalt ore: M.S. Metallurgical Engineering, 77p.
Thesis Tm D389
126. **DePolo**, Craig M., 1989, Seismotectonics of the White Mountains fault system, east-central California and west-central Nevada: M.S. Geology, 354p.
Thesis 2488 UMI 13-37959
127. **Desilets**, Mario Octave, 1991, Ion pedogeochemistry of the Kinsley Mountains deposit, Nevada: M.S. Geochemistry, 162p.
Thesis 2930 UMI 13-48533
128. **Desrochers**, Gary J., 1984, Geology of part of the Hilltop district, Lander County, Nevada: M.S. Geology, 97p.
Thesis 1878 UMI 13-24229
129. **DeWyk**, Bruce H., 1963, The use of punch cards in ore estimation and grade control at the Keystone mine, Silver City district, Nevada: M.S. Mining Engineering, 75p.
Thesis Tm D524
130. **Diehl**, Frank, 1986, Desulfurization of coal using freon-113 as a dense media separation fluid: M.S. Metallurgical Engineering, 76p.
Thesis 2059 UMI 13-28240
131. **Ding**, Wei, 1991, Phase transition study of thermal energy storage materials AMPL-NPG solid solution: M.S. Metallurgical Engineering, 70p.
Thesis 2864 UMI 13-46767
132. **Dinger**, James Sheldon, 1977, Relation between surficial geology and near-surface ground-water quality, Las Vegas Valley, Nevada: Ph.D. Hydrology, 215p.
Thesis 1174 UMI 78-1074
133. **Dircksen**, Paul Eric, 1975, Geology and mineralization of the Pine Grove-Rockland mining districts, Lyon County, Nevada: M.S. Geology, 69p.
Thesis 929
134. **Divens**, Donald F., 1957, Geology of the Telegraph Pass area, Diamond Range, White Pine County, Nevada: M.S. Geology, 59p.
Thesis Tm D618
135. **Dix**, Russell B., 1981, The kinetics of chlorine leaching of zinc-lead sulfide flotation concentrates: M.S. Metallurgy, 53p.
Thesis 1615 UMI 13-18730
136. **Dixon**, James B., 1977, Geology of the Wild Horse Canyon area, Fox Range, Washoe County, Nevada: M.S. Geology, 63p.
Thesis 1138 UMI 13-10375
137. **Dixon**, Richard Frederick, 1963, Hydrocyclone and rubber-lined pump testing at Braden Copper Company: Degree of Metallurgical Engineer, 83p.
Thesis Tm D621
138. **Dixon**, Richard Lee, 1971, The geology and ore deposits of the Red Canyon mining district, Douglas County, Nevada: M.S. Geology, 88p.
Thesis 624

139. **Domenico**, Patrick Anthony, 1967, Valuation of a ground-water supply for management and development: Ph.D. Geology, 65p.
Thesis 179 UMI 68-04682
140. **Donovan**, Diane E., 1991, Neotectonics of the southern Amargosa Desert, Nye County, Nevada and Inyo County, California: M.S., Geology, 162p.
Thesis 2755 UMI 13-44803
141. **Dowden**, John E., 1981, Numerical simulation of artificial recharge in Cold Spring Valley, Nevada: M.S. Hydrology, 123p.
Thesis 1548 UMI 13-17130
142. **Drowley**, David, 1973, A detailed stratigraphic study of the Battle Formation, north-central Nevada: M.S. Geology, 94p.
Thesis 783
143. **Drumheller**, Richard Ernest, 1978, The petrochemistry of the allanite bearing granitoids, Red Rock area, Washoe County, Nevada: M.S. Geology, 89p.
Thesis 1243 UMI 13-11879
144. **Dunn**, Anthony Charles, 1973, The geomorphological base to economic change in Lassen County, California: M.S. Geology, 112p.
Thesis 757
145. **Dunn**, Mildred Carneal, 1977, The relationship of isostasy to the preservation of playas in the Great Basin: M.S. Geology, 75p.
Thesis 1173 UMI 13-10854
146. **Duren**, Fred Kenneth, 1970, Optimizing flood control allocation for a multipurpose reservoir: M.S. Hydrology, 118p.
Thesis 454
147. **Duttweiler**, Karen A., 1985, Geology and geochemistry of the Broken Ridge area, southern Wah Wah Mountains, Iron County, Utah: M.S. Geology, 107p.
Thesis 1942 UMI 13-25830
148. **Edwards**, John, 1974, The effect of pH on the bacterial oxidation of arsenic sulfides: M.S. Metallurgical Engineering, 47p.
Thesis 886
149. **Ehrlinger**, Henry Phillip, 1956, Comparison between xanthate and dithiocarbamate for the collection of sulphide minerals: M.S. Metallurgical Engineering, 54p.
Thesis Tm Eh33
150. **Eisinger**, V. John, 1960, Geology of the Prison Hill-Brunswick Canyon area, Ormsby and Douglas Counties, Nevada: M.S. Geology, 69p.
Thesis Tm E136
151. **Eissmann**, Linda Johanna, 1990, Eolian sand transport in western Nevada: applications of Landsat TM imagery: M.S. Geology, 107p.
Thesis 2649 UMI 13-40749
152. **Emme**, David H., 1986, Delineation of subsurface flow in the Upper Meadow Valley Wash area, southeastern Nevada: M.S. Hydrology/Hydrogeology, 90p.
Thesis 2154 UMI 13-29823
153. **Ericson**, Norman John, 1939, The Ilocos Norte manganese deposits and especially the Siec group of the Ilocos Manganese Mining Company, located in the Commonwealth of the Philippines: Professional Degree of Mining Engineer, 26p.
Thesis Tm Er68
154. **Erikson**, Susan J., 1988, Thermometry as a tool for determining the hydrologic properties of the vadose zone: M.S. Hydrology/Hydrogeology, 244p.
Thesis 2436 UMI 13-35783
155. **Evashko**, Anna Helen, 1982, Evidence for magma mixing in selected volcanic rock of northwestern Nevada: M.S. Geology, 46p.
Thesis 1624 UMI 13-19012
156. **Fabbi**, Brent P., 1965, Occurrence of barium and strontium in typical Nevada gypsum: M.S. Mining Engineering, 54p.
Thesis Tm F113
157. **Fairfax**, Vella L., 1979, Demonstration and defense of the importance of geology in urban planning in the Carson City, Nevada area: M.S. Geology, 105p.
Thesis 1340 UMI 13-14269
158. **Fanning**, David James, 1982, Metamorphism and tungsten mineralization in the Nightingale Range, Pershing County, Nevada: M.S. Geology, 110p.
Thesis 1655 UMI 13-19010

159. **Farsad**, Ebrahim, 1975, Proposed mine design of Chehel-Koureh ore deposit: M.S. Mining Engineering, 110p.
Thesis 1140 UMI 13-10839
160. **Federici**, James M., 1977, Statistical design of hydrologic data networks: M.S. Hydrology, 77p.
Thesis 1194 UMI 13-11215
161. **Feeney**, Thomas Aquinas, 1987, A deuterium-calibrated groundwater flow model of western Nevada Test Site and vicinity: M.S. Hydrology/Hydrogeology, 56p.
Thesis 2173 UMI 13-31956
162. **Feldman**, Sandra C., 1988, Investigation of geology and hydrothermal alteration using detailed field mapping and high-resolution remote sensing data: Hot Creek Range, Nevada: Ph.D. Geology, 338p.
Thesis 2347 UMI 88-20745
163. **Fenske**, Jon Paul, 1990, Erosion control and water quality in the Tahoe Basin, California - Nevada: M.S. Geological Engineering, 155p.
Thesis 2693 UMI 13-42209
164. **Ferrone**, Kenneth Charles, 1989, The long-term failure characteristics of overconsolidated clay shales in the Mount Diablo region: M.S. Geological Engineering, 151p.
Thesis 2580 UMI 13-39307
165. **Fezie**, Glenn Stephen, 1980, The upper mantle velocity and crustal structure in the Basin and Range province: M.S. Geophysics, 134p.
Thesis 1406 UMI 13-15229
166. **Findley**, David Paul, 1984, Late Cenozoic tectonic deformation along the northern White Mountains, Mono and Inyo Counties, California: M.S. Geology, 93p.
Thesis 2019 UMI 13-27503
167. **Fink**, Richard Christopher, 1979, Late Cenozoic tectonic features in glacial sediments, Owens Valley, California: M.S. Geology, 81p.
Thesis 1392 UMI 13-14676
168. **Finn**, Dale Robert, 1987, Geology and ore deposits of the Hayden Hill district, Lassen County, California: M.S. Geology, 84p.
Thesis 2296 UMI 13-33119
169. **Fischer**, Jeffrey M., 1988, Streamflow infiltration and groundwater recharge through the unsaturated zone at Vicee Canyon, Nevada: M.S. Hydrogeology, 114p.
Thesis 2315 UMI 13-34179
170. **Fisher**, John Bailey, 1978, Flume development for a study of bedload and suspended sediment in Clear Creek drainage, eastern Sierra Nevada: M.S. Hydrology, 83p.
Thesis 1246 UMI 13-11881
171. **Flangas**, William G., 1958, Underground mining operations at Ruth, Nevada, 1951-1958: Degree of Engineer of Mines, 139p.
Thesis Tm F585
172. **Fleck**, Thomas Melvin, 1988, The reduction of Cr(VI) to Cr(III) in a fluidized bed electrochemical reactor: M.S. Metallurgical Engineering, 156p.
Thesis 2304 UMI 13-34163
173. **Flint**, David C., 1987, Geology, trace element geochemistry and hydrothermal alteration at the Buckhorn gold mine, Eureka County, Nevada: M.S. Geology, 98p.
Thesis 2204 UMI 13-31016
174. **Foster**, Joseph M., 1988, Geology and mineralization of the Lucky Hill pit, Candelaria mine, Mineral County, Nevada: M.S. Geology, 156p.
Thesis 2320 UMI 13-34156
175. **Fox**, Forrest L., 1982, Chemical variations of the Truckee River from Lake Tahoe to Truckee, California during low flow: M.S. Hydrology, 100p.
Thesis 1692 UMI 13-19704
176. **Frank**, Jack D., 1965, A preliminary study of tungsten carbide grinding media in fine grinding applications: M.S. Metallurgical Engineering, 73p.
Thesis Tm F828
177. **Franzone**, Joseph G., 1980, Geology, geochemical properties and vesicular rock classification of Lousetown basalts and latites, Truckee area, California: M.S. Geological Engineering, 170p.
Thesis 1423 UMI 13-15353

178. **Frick**, Elizabeth A., 1985, Quantitative analysis of groundwater flow in valley-fill deposits in Steptoe Valley, Nevada: M.S. Hydrology, 192p.
Thesis 2031 **UMI 13-27504**
179. **Fricke**, Rodney A., 1983, The hydrogeochemistry and aqueous uranium distribution of Petersen Mountain and Red Rock Valley, Washoe County, Nevada: M.S. Geology, 92p.
Thesis 1746 **UMI 13-21197**
180. **Frost**, Karl Albert, 1983, Geology and mineralization of the Luning (New Boston) tungsten - molybdenum prospect, Mineral County, Nevada: M.S. Geology, 60p.
Thesis 1744 **UMI 13-21200**
181. **Fuller**, Lynn Roy, 1986, General geology of Triassic rocks at Alaska Canyon in the Jackson Mountains., Humboldt County, Nevada: M.S. Geology, 110p.
Thesis 2148 **UMI 13-29831**
182. **Fulton**, Fred J., 1956, The omega transformation in a Ti-Mn alloy: M.S. Physical Metallurgy, 24p.
Thesis Tm F974
183. **Gallagher**, Neil Paul, 1987, Interaction of gold cyanide, thiocyanate, thiosulfate, and thiourea complexes with carbon matrices: M.S. Metallurgical Engineering, 182p.
Thesis 2209 **UMI 13-31025**
184. **Garbrecht**, David A., 1978, Lineaments in north-central Nevada and their relations to geothermal areas: M.S. Geology, 37p.
Thesis 1219 **UMI 13-11891**
185. **Garside**, Larry J., 1968, Geology of the Bishop Creek area, Elko County, Nevada: M.S. Geology, 52p.
Thesis 264
186. **Geasan**, Dennis L., 1980, The geology of a part of the Olinghouse mining district, Washoe County, Nevada: M.S. Geology, 118p.
Thesis 1436 **UMI 13-15406**
187. **Gedney**, Larry D., 1967, A preliminary study of focal mechanisms of small earthquakes in the central Nevada region: M.S. Geology, 59p.
Thesis 145
188. **Gentry**, Donald William, 1967, Scheduling production from underground mines by linear programming: M.S. Mining Engineering, 26p.
Thesis 143
189. **Gerdel**, Miguel Antonio, 1985, Microflotation investigations of bastnaesite and barite: M.S. Metallurgical Engineering, 95p.
Thesis 1978 **UMI 13-26678**
190. **Gianella**, Vincent P., 1920, The sampling of free gold ores: M.S. Mining Engineering, 25p.
Thesis Tm G433
191. **Gibbons**, James Arthur, 1973, The geology of part of the Contact mining district, Elko County, Nevada: M.S. Geology, 181p.
Thesis 741
192. **Gibson**, Peter Craig, 1987, Geology of the Buckskin mine, Douglas County, Nevada: M.S. Geology, 93p.
Thesis 2230 **UMI 13-31782**
193. **Glenn**, Robert Jerrell, 1968, Water resources of Warm Springs Valley, Washoe County, Nevada: Professional Degree of Geological Engineer, 93p.
Thesis 292
194. **Godwin**, Larry H., 1958, Geology of the west side of Peavine Mountain, Washoe County, Nevada: M.S. Geological Engineering, 59p.
Thesis Tm G591
195. **Goldfarb**, Richard Jeffrey, 1981, A stream sediment geochemical reconnaissance of the Golden Trout Wilderness, California: M.S. Hydrogeology, 242p.
Thesis 1593 **UMI 13-18138**
196. **Goldstrand**, Patrick M., 1991, Tectonostratigraphy, petrology, and paleogeography of Upper Cretaceous to Eocene rocks of southwest Utah: Ph.D., Geology, 216p.
Thesis 2753 **UMI 91-26402**
197. **Gorman**, Mark G., 1988, The effects of size and grinding on the flotation of quartz: M.S. Metallurgical Engineering, 87p.
Thesis 2307 **UMI 13-34184**
198. **Gourley**, John W., 1966, The activated sintering and hot-pressing of electrowon tungsten powder: M.S. Metallurgical Engineering, 44p.
Thesis 19

199. **Graney, Joseph Robert**, 1985, Geology, alteration, and mineralization at Hasbrouck Mountain, Divide district, Esmeralda County, Nevada: M.S. Geology, 106p.
Thesis 1931 UMI 13-25832
200. **Grant, Terry A.**, 1974, Minor folding in the Rabbit Hill Formation, Eureka County, Nevada: M.S. Geology, 100p.
Thesis 818
201. **Green, William Randolph**, 1964, Structural control of mineralization at the Aurora mining district, Mineral County, Nevada: M.S. Mining Engineering, 41p.
Thesis Tm G798
202. **Greensfelder, Roger W.**, 1965, The problem of determining depth of focus with applications to Nevada earthquakes: M.S. Geology, 33p.
Thesis Tm G815
203. **Greenslade, William Murray**, 1967, A water cost study in Las Vegas Valley, Nevada: M.S. Geology, 64p.
Thesis 157
204. **Gupta, Ashok K.**, 1972, The reaction-rate studies of asbestos minerals with acids: M.S. Metallurgical Engineering, 112p.
Thesis 636
205. **Gupta, Subhash Chand**, 1973, A study of anionic, cationic and amphoteric collectors: M.S. Metallurgical Engineering, 47p.
Thesis 781
206. **Gustafson, Fridolf V.**, 1977, Regional reconnaissance of the Sheep Pass Formation: M.S. Geology, 86p.
Thesis 1181 UMI 13-10848
207. **Hadiaris, Amy K.**, 1988, Quantitative analysis of groundwater flow in Spanish Springs Valley, Washoe County, Nevada: M.S. Hydrology/Hydrogeology, 203p.
Thesis 2438 UMI 13-35785
208. **Hallee, Mark C.**, 1986, The geology of the central part of the Benton Range, east-central California: M.S. Geology, 123p.
Thesis 2147 UMI 13-29815
209. **Hamlin, Scott Norman**, 1977, Platinum occurrence in serpentinite along the Melones fault zone near Foresthill, California: M.S. Geochemistry, 43p.
Thesis 1154 UMI 13-10361
210. **Han, Young H.**, 1988, Fermi energy levels of fine calcites prepared in different ways: M.S. Metallurgical Engineering, 64p.
Thesis 2458 UMI 13-36839
211. **Hand, David**, 1955, Geology of the Corral Canyon area, Churchill County, Nevada: M.S. Geology, 32p.
Thesis Tm H236
212. **Hannifan, Martin K.**, 1948, Caving process of Andes copper: Professional Degree of Mining Engineer, 36p.
Thesis Tm H245
213. **Hansen, Donald S.**, 1978, Tritium movement in the unsaturated zone, Nevada Test Site: M.S. Hydrology, 107p.
Thesis 1300 UMI 13-12953
214. **Hardyman, Richard Frank**, 1978, Volcanic stratigraphy and structural geology of Gillis Canyon Quadrangle, northern Gillis Range, Mineral County, Nevada: Ph.D. Geology, 248p.
Thesis 1278 UMI 79-6131
215. **Harpel, Greg**, 1980, Geology and tungsten mineralization of a portion of the Ragged Top mining district, Pershing County, Nevada: M.S. Geology, 48p.
Thesis 1506 UMI 13-18996
216. **Harrington, Robert Franklin**, 1991, The amount and fate of acid deposition in the Sierra Nevada, California: M.S., Hydrology/Hydrogeology, 120p.
Thesis 2835 UMI 13-45771
217. **Harris, Charles M.**, 1956, Agricultural gypsum for alkali land reclamation: Professional Degree of Mining Engineer, 32p.
Thesis Tm H313a
218. **Harsh, John Franklin**, 1969, Relationships between streamflow and ground water in Humboldt River Valley near Winnemucca, Nevada: Ph.D. Geology, 114p.
Thesis 336 UMI 69-18324

219. **Hart**, Daniel Douglas, 1978, The geology and origin of the Green Mountain massive sulfide deposit, Mariposa County, California: M.S. Geology, 107p.
Thesis 1286 UMI 13-12886
220. **Hart**, James J. P., 1911, The most economical method of treating the sulphide ores of Goldfield: Professional Degree of Mining Engineer, 15p.
Thesis 37
221. **Hartzog**, Laurence David, 1966, The determination of rhenium by atomic absorption spectrophotometry: M.S. Metallurgical Engineering, 44p.
Thesis 11
222. **Havlicak**, Jeffrey Lowell, 1990, A geostatistical investigation of the Illipah mine: M.S. Geological Engineering, 173p.
Thesis 2651 UMI 13-40739
223. **Haworth**, William D., 1979, Geology of the northern part of the Diamond Range, Eureka and White Pine Counties, Nevada: M.S. Geology, 68p.
Thesis 1405 UMI 13-15225
224. **Hayes**, Garry Fallis, 1985, Late Quaternary deformation and seismic risk in the northern Sierra Nevada-Great Basin boundary zone near the Sweetwater Mountains, California and Nevada: M.S. Geology, 135p.
Thesis 1970 UMI 13-25826
225. **Hebbar**, Kavitha N., 1991, Viscosity modeling and glass formation studies in oxy-fluoride melts: M.S., Metallurgical Engineering, 168p.
Thesis 2810 UMI 13-45021
226. **Heeley**, Michael, 1988, The computer aided design of the hydraulic transport of coarse mineral particles: M.S. Mining Engineering, 180p.
Thesis 2493 UMI 13-37952
227. **Heggeness**, John O., 1982, The geology of Ragged Top Caldera: M.S. Geology, 107p.
Thesis 1687 UMI 13-19703
228. **Hemmati**, Mahin, 1987, A study of thiosulfate leaching of gold from carbonaceous ore and the quantitative determination of thiosulfate in the leached solution: M.S. Metallurgical Engineering, 54p.
Thesis 2216 UMI 13-31035
229. **Henne**, Mark Siegfried, 1982, The dissolution of Rainier Mesa volcanic tuffs, and its application to the analysis of the groundwater environment: M.S. Hydrology, 113p.
Thesis 1698 UMI 13-19702
230. **Henricksen**, Raymond Milton, 1937, Placer mining methods in the Fairbanks district: Professional Degree of Engineer of Mines, 131p.
Thesis Tm H518
231. **Herber**, Lawrence J., 1968, Order-disorder in coexisting plagioclase and alkali feldspar from the Mineral Range of southwest Utah: Ph.D. Geology, 95p.
Thesis 296 UMI 69-06426
232. **Herman**, Marc Edward, 1984, Tidal fluctuations and ground-water dynamics in atoll island aquifers: M.S. Hydrology, 150p.
Thesis 1914 UMI 13-24852
233. **Heuberger**, Mark Oscar, 1985, Late Cenozoic volcanism, precious-metal mineralization and evidence for a collapse caldera in the San Martin area, Altiplano of southern Peru: M.S. Geology, 67p.
Thesis 2001 UMI 13-26775
234. **Hicks**, Noel W., 1991, Mineralization, alteration, and fluid inclusion studies of the Camas and Princess Blue-Ribbon mines in the Hailey gold belt, Camas and Blaine Counties, Idaho: M.S., Geology, 165p.
Thesis 2870 UMI 13-46774
235. **Hilliard**, George Henry, 1966, Effect of oxygen on the recovery, recrystallization and grain growth of high-purity silver: M.S. Metallurgical Engineering, 95p.
Thesis 120
236. **Hiner**, John Edward, 1979, Geology of the Desert Peak geothermal anomaly, Churchill County, Nevada: M.S. Geology, 84p.
Thesis 1322 UMI 13-13583
237. **Hinckley**, Leland H., 1935, The mechanical placer plant of the Nevada Porphyry Gold Mines, Incorporated: Professional Degree of Mining Engineer, 61p.
Thesis 26

238. **Hoffard**, Joanne L., 1991, Quaternary tectonics and basin history of Pahrump and Stewart Valleys, Nevada and California: M.S., Geology, 151p.
Thesis 2747 UMI 13-43958
239. **Hoffman**, Fredric, 1969, The geology of the Black Mountain area, Mineral County, Nevada: M.S. Geology, 54p.
Thesis 379
240. **Hoffman**, Lee Ellis, 1975, The effect of thiobacillus ferrooxidans on argentite, stibnite, and a stibnite-silver ore: M.S. Geology, 81p.
Thesis 999 UMI 13-08327
241. **Holmes**, Paul J., 1972, Infiltration uranium deposits in ash flow tuffs: M.S. Geology, 65p.
Thesis 657
242. **Homer**, Dudley D., 1929, A study of the economic development of Minas de Matahambre, S.A.: Professional Degree of Mining Engineer, 11p.
Thesis Tm H766
243. **Hooman**, Jannie, 1989, Concepts and innovations in the finance of junior gold mining ventures: M.S. Mining Engineering, 61p.
Thesis 2475 UMI 13-36855
244. **Horton**, Robert Carlton, 1965, Statistical studies concerning the distribution of mining districts and mineral deposits in Nevada: Professional Degree of Geological Engineer, 22p.
Thesis 17
245. **Howard**, Luran L., 1977, An evaluation of inertial effects in a well-aquifer system: M.S. Hydrology, 71p.
Thesis 1186 UMI 13-10995
246. **Howe**, Daniel Marshall, 1975, Correlation of the fauna from the Middle Permian section at Black Rock, northwestern Nevada: M.S. Geology, 133p.
Thesis 980 UMI 13-08328
247. **Howe**, Daniel Marshall, 1989, Comparison of surface and subsurface vertical sequences in the Cretaceous Ferron Sandstone, Utah: Ph.D. Geology, 191p.
Thesis 2600 UMI 90-17472
248. **Hu**, Huijun, 1989, Modeling of viscosities in liquid melts and experimental determination of spent potlining: M.S. Metallurgical Engineering, 65p.
Thesis 2466 UMI 13-36844
249. **Hudson**, Donald McComb, 1977, Geology and alteration of the Wedekind and part of the Peavine districts, Washoe County, Nevada: M.S. Geology, 102p.
Thesis 1132 UMI 13-10376
250. **Hudson**, Donald McComb, 1983, Alteration and geochemical characteristics of the upper parts of selected porphyry systems, western Nevada: Ph.D. Geology, 229p.
Thesis 1775 UMI 84-1777
251. **Hughes**, Jerry L., 1966, Some aspects of the hydrogeology of the Spring Mountains and Pahrump Valley, Nevada, and environs, as determined by spring evaluation: M.S. Geological Engineering, 116p.
Thesis 18
252. **Hull**, Donald Albert, 1970, Geology of the Puzzle vein, Creede mining district, Colorado: Ph.D. Geology, 170p.
Thesis 479 UMI 71-04453
253. **Humphrey**, Fred LaSalle, 1945, Geology of the Groom district, Lincoln County, Nevada: Professional Degree of Mining Engineer, 53p.
Thesis 62
254. **Humphrey**, John Henry, 1972, Numerical prediction of snowpack temperatures in the eastside Sierra Nevada using a surface energy balance model: Ph.D. Hydrology, 107p.
Thesis 720 UMI 73-15293
255. **Hunter**, Robert Dalton, 1989, The geochemistry of lime-induced heave in sulfate bearing clay soils: Ph.D. Geology, 270p.
Thesis 2560 UMI 90-11425
256. **Hutton**, Robert A., 1978, Geology and uranium content of middle Tertiary ash-flow tuffs in the northern part of Dogskin Mountain, Nevada: M.S. Geology, 103p.
Thesis 1209 UMI 13-11359
257. **Hwang**, Mine-Yun, 1976, Serpentine as adsorbent for removal of phosphate from water: M.S. Metallurgical Engineering, 73p.
Thesis 1052 UMI 13-09359

258. **Ingram**, Brent J., 1981, Stability of excavated slopes in horizontally bedded rock: M.S. Geological Engineering, 155p.
Thesis 1555 **UMI 13-17596**
259. **Ingraham**, Neil L., 1982, Environmental isotope hydrology of the Dixie Valley geothermal system, Dixie Valley, Nevada: M.S. Hydrology, 96p.
Thesis 1620 **UMI 13-18728**
260. **Ismail**, Azmi, 1986, Crustal structure in the vicinity of Yucca Mountain: M.S. Geophysics, 106p.
Thesis 2102 **UMI 13-28657**
261. **Iverson**, Brian Glen, 1991, Stratigraphy of Devonian-Mississippian rocks, northern Piñon Range, southwestern Elko County, Nevada: M.S., Geology, 94p.
Thesis 2902 **UMI 13-47555**
262. **Ivosevic**, Stanley Wayne, 1976, Geology and ore deposits of the Johnnie district, Nye County, Nevada: M.S. Geology, 193p.
Thesis 1021 **UMI 13-09154**
263. **Jackson**, Mac Roy, Jr., 1988, The Timber Mountain magmato-thermal event: an intensive widespread culmination of magmatic and hydrothermal activity at the southwestern Nevada volcanic field: M.S. Geology, 46p.
Thesis 2366 **UMI 13-34335**
264. **Jackson**, Philip Richard, 1986, Geology and litho-geochemistry of the Flagstaff Mountain barite deposit and surrounding area, Stevens County, Washington: M.S. Geology, 120p.
Thesis 2143 **UMI 13-29830**
265. **Jager**, Douglas John, 1972, Infiltration and sediment production on the big sage type near Eastgate, Nevada: Ph.D. Hydrology, 182p.
Thesis 641 **UMI 72-27229**
266. **Jennings**, Olin R., 1967, Economics of Nevada iron ores: A market study: M.S. Mining Engineering, 116p.
Thesis 205
267. **Johnson**, Cady Leonard, 1982, Correlation and origin of carnotite occurrences in the southern Nevada region: Ph.D. Geology, 184p.
Thesis 1740 **UMI 83-12493**
268. **Johnson**, Dane S., 1974, Foraminiferal distribution as a function of gas chromatographic analysis of the lower Mohnian stage of the Monterey Formation, western Ventura basin, California: M.S. Geology, 74p.
Thesis 856
269. **Johnson**, Edwin Lionel, 1982, Geochemistry of some Mississippian basin-slope facies, Utah, Nevada: M.S. Geology, 118p.
Thesis 1729 **UMI 13-20494**
270. **Johnson**, James Mark, 1978, Geology and mineralization of the Marietta area, Mineral County Nevada: M.S. Geology, 56p.
Thesis 1383 **UMI 13-14514**
271. **Johnson**, Robert Crandall, 1977, Geological investigation and ore reserve estimation of the Copper Chief (Ruby Hill) mine, Douglas County, Nevada: M.S. Geology, 32p.
Thesis 1142 **UMI 13-10360**
272. **Jones**, Richard Burton, 1972, Geochemistry as a guide in underground exploration for mercury ore at the New Idria mine, San Benito County, California: M.S. Geology, 100p.
Thesis 651
273. **Jones**, Steven K., 1984, Geology and mineralization in the zone of contact metamorphism associated with the Seligman stock, White Pine mining district, White Pine County, Nevada: M.S. Geology, 94p.
Thesis 1839 **UMI 13-23744**
274. **Joslin**, Robert David, 1982, Effects of stemming variations in open-pit blasting - a laboratory study: M.S. Mining Engineering, 104p.
Thesis 1637 **UMI 13-19503**
275. **Joung**, Houg-Ming, 1978, The formulation and application of a generalized water quality index based on multivariate factor analysis of water quality data from agricultural irrigation return flows: Ph.D. Hydrology, 106p.
Thesis 1213 **UMI 78-17234**
276. **Jucevic**, Edward Paul, 1969, Technical and economic feasibility study for a copper mine and mill using segregation, leaching, solvent extraction and electrowinning: M.S. Metallurgical Engineering, 148p.
Thesis 426

277. **Juncal**, Russell Wright, 1980, Exploration for geothermal resources using arsenic and mercury soil geochemistry, Dixie Valley, Nevada: M.S. Geology, 88p.
Thesis 1488 UMI 13-16353
278. **Karim**, Alexander, 1991, Geology of the eastern part of Gull Lake pendant, Mono County, California: M.S., Geology, 125p.
Thesis 2757 UMI 13-44800
279. **Karst**, Gary B., 1987, Analysis of the northern Dixie Valley groundwater flow system using a discrete-state compartment model: M.S. Hydrology/Hydrogeology, 100p.
Thesis 2291 UMI 13-32558
280. **Kautsky**, Mark, 1984, Sorption of cesium and strontium by arid region desert soil: M.S. Hydrology, 102p.
Thesis 1876 UMI 13-23798
281. **Kearl**, Peter M., 1981, Water transport in desert alluvial soil: M.S. Hydrology/Hydrogeology, 130p.
Thesis 1681 UMI 13-19698
282. **Kemp**, Wayne Russell, 1982, Petrochemical affiliations of volcanogenic massive sulfide deposits of the Foothill Cu-Zn belt, Sierra Nevada, California: Ph.D. Geology, 458p.
Thesis 1728 UMI 83-12472
283. **Kesterke**, Donald Gene, 1959, Contact angle studies comparing xanthates and dithiocarbamates as collectors for sulfide minerals: M.S. Metallurgical Engineering, 60p.
Thesis Tm K42
284. **Khanna**, Satish Kumar, 1972, Adsorption study of amphoteric surfactants on mineral surfaces using infrared spectroscopy: M.S. Metallurgical Engineering, 39p.
Thesis 698
285. **Kilbreath**, Steven Perry, 1979, Geology and mineralization of the Silver Dyke mine, Mineral County, Nevada: M.S. Geology, 91p.
Thesis 1323 UMI 13-13592
286. **Killeen**, Katheryn Marie, 1988, Timing of folding and uplift of the Pismo syncline, San Luis Obispo County, California: M.S. Geology, 75p.
Thesis 2445 UMI 13-36856
287. **Kingston**, William Lucas, 1989, Characterization of colloids found in various groundwater environments in central and southern Nevada: M.S. Hydrology/Hydrogeology, 159p.
Thesis 2573 UMI 13-39305
288. **Kirk**, Marcia W. Olson, 1987, Sensitivity analysis of groundwater contamination caused by immobilized gasoline hydrocarbons: M.S. Hydrogeology, 101p.
Thesis 2177 UMI 13-30228
289. **Kirk**, Stephen T., 1987, Analysis of the White River groundwater flow system using a deuterium-calibrated discrete-state compartment model: M.S. Hydrology/Hydrogeology, 81p.
Thesis 2248 UMI 13-31786
290. **Kirkham**, Richard A., 1982, The geology of the northern portion of the Fox Range, Washoe County, Nevada: M.S. Geology, 98p.
Thesis 1700 UMI 13-19699
291. **Kirkham**, Robert Marshall, 1976, Environmental geology of the western Carson City, Nevada area: M.S. Geology, 97p.
Thesis 1003 UMI 13-08329
292. **Klemme**, Michael, 1982, Economic considerations in underground mining equipment selection: M.S. Mining Engineering, 183p.
Thesis 1705 UMI 13-19697
293. **Klimberg**, David M., 1981, The effect of tailings solutions on the stability and seepage characteristics of earth dams and ponds: M.S. Geological Engineering, 130p.
Thesis 1501 UMI 13-16700
294. **Kneiblher**, Carolyn Ruth, 1985, Seismic refraction surveys of alluvium-filled washes, Yucca Mountain, Nevada: M.S. Hydrology, 112p.
Thesis 2010 UMI 13-26772
295. **Koehler**, Bret Matthew, 1989, Stratigraphy and depositional environments of the late Pliocene (Blancan) Hallelujah Formation, Long Valley, Lassen County, California, Washoe County, Nevada: M.S. Geology, 120p.
Thesis 2589 UMI 13-39295

296. **Koltermann**, Christine Rinzel, 1983, An LP embedded simulation model for conjunctive use management optimization: M.S. Hydrology, 170p.
Thesis 1793 **UMI 13-22237**
297. **Koltermann**, Howard H., 1984, Hydrogeochemical and environmental isotope investigation of groundwater recharge mechanisms in the Virginia City Highlands, Nevada: M.S. Hydrology, 149p.
Thesis 1909 **UMI 13-24532**
298. **Kraatz**, Peter Robert, 1989, The construction aggregate potential of geologic deposits, Storey County, Nevada: M.S. Geological Engineering, 180p.
Thesis 2492 **UMI 13-37930**
299. **Kral**, Victor E., 1951, Mineral resources of Nye County, Nevada: Professional Degree of Mining Engineer, 223p.
Thesis 60
300. **Krank**, Kenneth D., 1980, The effects of weathering on the engineering properties of Sierra Nevada granodiorites: M.S. Geological Engineering, 99p.
Thesis 1394 **UMI 13-15215**
301. **Krause**, Alan Joel, 1980, Geologic site investigation of the Kaneohe-Kailua Flood Control Project, Kaneohe, Hawaii: M.S. Geological Engineering, 109p.
Thesis 1403 **UMI 13-15214**
302. **Krause**, Kerwin J., 1981, Geology and mineralization of the Granite Creek area, eastern Alaska Range, Alaska: M.S. Geology, 92p.
Thesis 1503 **UMI 13-17079**
303. **Kronberg**, Merrily, 1975, Socio-environmental problems related to Nevada's rural county subdivisions: M.S. Geology, 80p.
Thesis 952 **UMI 13-08063**
304. **Kumar**, Swapan, 1991, Dielectric properties of intrinsic moisture and flotability of coals of various ranks: M.S., Metallurgical Engineering, 61p.
Thesis 2875 **UMI 13-46777**
305. **Kurtak**, Joseph M., 1975, Stratigraphy and structure in the Belmont mining district, Nye County, Nevada: M.S. Geology, 68p.
Thesis 924 **UMI 13-08011**
306. **Kwa**, Boo Leong, 1984, A geostatistical study of the Alligator Ridge gold deposit: M.S. Mining Engineering, 228p.
Thesis 1924 **UMI 13-25137**
307. **Lagoni**, Jack R., 1985, The geomorphology of the Truckee River delta, at Pyramid Lake, Nevada, and implications on the decline of Lake Lahontan: M.S. Geology, 94p.
Thesis 1928 **UMI 13-25135**
308. **Lahren**, Mary M., 1989, Tectonic studies of the Sierra Nevada: Structure and stratigraphy of miogeoclinal rocks in Snow Lake pendant, Yosemite-Emigrant wilderness; and TIMS analysis of the northern Sierra terrane: Ph.D. Geology, 260p.
Thesis 2567 **UMI 90-11424**
309. **Lai**, Eong-Lip, 1973, Adsorption study of fatty acids on hematite surface: M.S. Metallurgical Engineering, 52p.
Thesis 808
310. **Laird**, Brien A., 1988, Geometry and kinematics of geologic structures, Pine Mountain - Ojai area, western Transverse Ranges, California: M.S. Geology, 107p.
Thesis 2331 **UMI 13-34181**
311. **Larsen**, William Robert, 1967, Hydrologic and geologic aspects of ground-water recharge along the Humboldt River near Winnemucca, Nevada: M.S. Hydrology, 124p.
Thesis 234
312. **Lat**, Che Noorliza, 1989, Seismicity and tectonics of the Garfield Hills area Nevada: M.S. Geophysics, 154p.
Thesis 2546 **UMI 13-38567**
313. **Laule**, Susan Wunderlich, 1978, A reinterpretation of the Permian Wildcat Peak Formation, central Nevada: M.S. Geology, 90p.
Thesis 1235 **UMI 13-11997**
314. **Leary**, Kevin D., 1990, Analysis of techniques for estimating potential recharge and shallow unsaturated zone water balance near Yucca Mountain, Nevada: M.S. Hydrology, 334p.
Thesis 2658 **UMI 13-40731**
315. **Leatham**, Stacey, 1982, Origin and distribution of soil nitrates on the Nevada Test Site: M.S. Hydrology, 152p.
Thesis 1733 **UMI 13-20495**

316. **Lee, Chiekyo**, 1965, A study on the recrystallization characteristics of high purity lead and its alloys: M.S. Physical Metallurgy, 76p.
Thesis Tm L477
317. **Leffler, Peter Michael**, 1989, Characterization of present and possible future (wetter) climatic regimes utilizing the historical climatic record and an analogue technique in the southern Great Basin: M.S. Hydrology/Hydrogeology, 193p.
Thesis 2584 UMI 13-39304
318. **Lemaire, Darrell Bernard**, 1954, The metallurgy of the Divide tungsten ore: M.S. Metallurgical Engineering, 37p.
Thesis Tm L545
319. **Lenz, Peter Edward**, 1989, A microcomputer-based, management information system for a small, surface heap leach mine: M.S. Mining Engineering, 299p.
Thesis 2499 UMI 13-37942
320. **Leonardi, Modesto L.**, 1954, American Potash and Chemical Corporation main plant cycle: Professional Degree of Mining Engineer, 8p.
Thesis Tm L581a
321. **Lewis, John Scott**, 1989, Pre-S phases recorded north of Long Valley Caldera: An investigation into their nature and geologic significance: M.S. Geophysics, 336p.
Thesis 2585 UMI 13-39318
322. **Lide, Chester Scott**, 1984, Aftershocks of the May, 1980 Mammoth Lakes, California earthquakes: M.S. Geophysics, 78p.
Thesis 1920 UMI 13-25142
323. **Linderfelt, William R.**, 1987, Numerical analysis of infiltration and near-surface percolation in relation to Yucca Mountain, Nevada: M.S. Hydrology/Hydrogeology, 64p.
Thesis 2269 UMI 13-32288
324. **Linscott, Fred M.**, 1931, Part I. New Rietkuil Mines Ltd. Part II. Skilled and unskilled labour of south and central Africa as mine labourers: Professional Degree of Mining Engineer, 19p.
Thesis Tm L759
325. **Liu, Bainian**, 1988, Use of DSS/2 software for the solution of a coupled mass and heat transfer problem: M.S. Metallurgical Engineering, 216p.
Thesis 2388 UMI 13-35178
326. **Lohn, Heidi L.**, 1989, The effects of topography on the amplification and deamplification of seismic waves: M.S. Geological Engineering, 257p.
Thesis 2556 UMI 13-38562
327. **Lohr, Lewis Stillman**, 1965, Geology of the Brock Canyon area, Monitor Range, Eureka County, Nevada: M.S. Geological Engineering, 44p.
Thesis Tm L833
328. **Lopes, Thomas J.**, 1987, Hydrology and water budget of Owens Lake, California: M.S. Hydrology/Hydrogeology, 128p.
Thesis 2262 UMI 13-32290
329. **Luethe, Ronald D.**, 1974, Petrology of the Ryan Canyon Stock, Mineral County, Nevada: M.S. Geology, 88p.
Thesis 883
330. **Lugaski, Thomas P.**, 1986, Preliminary analysis of the physical stratigraphy, depositional environment, and paleoecology of the Miocene non-marine deposits, Stewart Valley, Nevada: M.S. Geology, 234p.
Thesis 2108 UMI 13-29113
331. **Lukasko, James John**, 1989, An electro-metallurgical method for the production of calcium: M.S. Metallurgical Engineering, 48p.
Thesis 2586 UMI 13-39310
332. **Lukasko, James John**, 1991, An electrometallurgical methods for the production of lead-calcium alloys: Professional Degree Metallurgical Engineer, 57p.
Thesis 2768 UMI 13-44806
333. **Lundby, William**, 1957, The geology of the northern part of the Aurora district: M.S. Geological Engineering, 36p.
Thesis 46
334. **Lyles, Bradley F.**, 1985, Time-variant hydro-geologic and geochemical study of selected thermal springs in western Nevada: M.S. Hydrology/Hydrogeology, 203p.
Thesis 2008 UMI 13-26774
335. **Lyons, Mark S.**, 1965, Interpretation of planar structure in drill-hole core: Professional Degree of Geological Engineer, 65p.
Thesis 6

336. **MacDonald**, John Alexander, 1991, Automatic classification of satellite images in the textural domain using semivariograms: M.S., Geological Engineering, 91p.
Thesis 2807 UMI 13-45017
337. **Mahin**, Donald Alan, 1978, Analysis of ground-water flow in the Edwards limestone aquifer, San Antonio area, Texas: M.S. Hydrology, 49p.
Thesis 1271 UMI 13-12447
338. **Malghan**, Subhaschandra G., 1971, The dissolution kinetics of fibrous amphibole minerals in water: M.S. Metallurgical Engineering, 89p.
Thesis 573
339. **Malone**, Stephen D., 1972, Earth strain measurements in Nevada and possible effects on seismicity due to the solid earth tides: Ph.D. Geophysics, 139p.
Thesis 658 UMI 72-29754
340. **Markos**, Andrew George, 1985, Geology of the Cornucopia mining district, Elko County, Nevada: M.S. Geology, 86p.
Thesis 1979 UMI 13-26670
341. **Martin**, Conrad, 1958, The origin of crystalline magnesite deposits: Professional Degree of Geological Engineer, 77p.
Thesis Tm M379
342. **Martinelli**, Diane M., 1989, Geophysical investigations of the northern Sierra Nevada-Basin and Range boundary, west-central Nevada and east-central California: M.S. Geophysics, 172p.
Thesis 2564 UMI 13-38576
343. **Masterson**, Ian Francis, 1977, Processing the Cordero mercury ore in a baffled rotary tubular reactor: M.S. Metallurgical Engineering, 75p.
Thesis 1127 UMI 13-10370
344. **Mathews**, David Ross, 1966, The effects of carbon and dispersed carbides on the mechanical properties of vanadium-titanium alloys: M.S. Metallurgical Engineering, 66p.
Thesis 40
345. **Matz**, Barbara, 1989, Remote sensing and geomorphic studies for seismotectonic analysis, Santa Maria Basin, California: M.S. Geology, 89p.
Thesis 2581 UMI 13-39303
346. **McBeth**, Paul Edward, Jr., 1986, Hydrogeologic significance of Landsat Thematic Mapper lineament analyses in the Great Basin: M.S. Hydrology/Hydrogeology, 154p.
Thesis 2135 UMI 13-29339
347. **McCleary**, Jefferson Rand, 1974, Geology of the Carbon Ridge area, Eureka County, Nevada, with emphasis on the Diamond Peak Formation: M.S. Geology, 123p.
Thesis 932
348. **McCormack**, John Kevin, 1986, Paragenesis and origin of sediment-hosted mercury ore at the McDermitt Mine, McDermitt, Nevada: M.S. Geology, 97p.
Thesis 2140 UMI 13-29336
349. **McCready**, Donald K., 1965, Froth flotation of the Daisy Mine fluorite ores, Nye County, Nevada: M.S. Metallurgical Engineering, 66p.
Thesis Tm M174
350. **McCulla**, Michael, 1980, The genesis of the Los Ochos uranium deposits, Saguache County, Colorado: M.S. Geology, 128p.
Thesis 1393 UMI 13-15226
351. **McDaniel**, Scott Byron, 1982, Permian-Triassic source bed analysis at Quinn River Crossing, Humboldt County, Nevada: M.S. Geology, 120p.
Thesis 1623 UMI 13-18726
352. **McFarlane**, Deborah Nyal, 1981, Oreana tungsten-bearing pegmatite and related Rocky Canyon stock, Pershing County, Nevada: M.S. Geology, 98p.
Thesis 1564 UMI 13-17590
353. **McFarlane**, Michael James, 1981, Geology of the Moonlight Valley porphyry copper deposit, Lights Creek, Plumas County, California: M.S. Geology, 81p.
Thesis 1569 UMI 13-17589
354. **McGarvie**, Scott Douglas, 1979, Utilization of selected soil properties to estimate saturated hydraulic conductivity in the Truckee Meadows: M.S. Geology, 69p.
Thesis 1306 UMI 13-13589
355. **McGill**, Sandra L., 1985, Thiocyanate formation by reaction of metal sulfides with cyanide: M.S. Metallurgy, 71p.
Thesis 1997 UMI 13-26780

356. **McGillis**, John L., 1967, The silver content of caliche on alluvial fans as a regional guide to areas of silver and gold mineralization in the Basin and Range province: M.S. Mining Engineering, 30p.
Thesis 230
357. **McKay**, Wallace Alan, 1991, Analysis of groundwater quality in New Washoe City, Nevada: M.S., Hydrogeology, 62p.
Thesis 2825 UMI 13-45767
358. **McKenna**, Sean Andrew, 1990, Examination of water quality and groundwater-surface water interaction during drought periods, Truckee River, California-Nevada: M.S. Hydrology/Hydrogeology, 143p.
Thesis 2673 UMI 13-41573
359. **McKinney**, Roy Franklin, 1976, Environmental geology of southeast Carson City, Nevada: M.S. Geological Engineering, 135p.
Thesis 1102 UMI 13-09669
360. **McLelland**, Douglas, 1967, Geology of the basement complex Thorvald Nilsen Mountains, Antarctica: M.S. Geological Engineering, 54p.
Thesis 210
361. **McMillion**, Leslie Glen, Jr., 1990, Mechanisms of chemical suppression of rocket exhaust afterburning: M.S. Metallurgical Engineering, 100p.
Thesis 2688 UMI 13-41913
362. **McPartland**, Jack Stuart, 1989, The extraction of metals from metal containing catalysts by supercritical fluids: M.S. Metallurgical Engineering, 68p.
Thesis 2545 UMI 13-38579
363. **Meeker**, Lawrence E., 1990, Engineering and economic factors affecting the cost of railroad ballast: M.S. Geological Engineering, 272p.
Thesis 2718 UMI 13-43021
364. **Merenbach**, Simon, 1924, The problems of the gas department: Professional Degree of Mining Engineer, 37p.
Thesis 412
365. **Merritt**, Nancy J., 1991, Polyphase deformation of possible Proterozoic to Lower Cambrian miogeoclinal rocks of the Dinkey Creek pendant, central Sierra Nevada: M.S., Geology, 126p.
Thesis 2758 UMI 13-44802
366. **Merritt**, Robert Gordon, 1978, Digital simulation of snowmelt runoff: M.S. Hydrology, 107p.
Thesis 1261 UMI 13-12334
367. **Metcalf**, Linda Anne, 1982, Tephrostratigraphy and potassium-argon age determinations of seven volcanic ash layers in the Muddy Creek Formation of southern Nevada: M.S. Geology, 187p.
Thesis 1627 UMI 13-19020
368. **Middlebrook**, John, 1957, Geology at Tungsten, Nevada, emphasizing structural aspects: M.S. Geological Engineering, 41p.
Thesis Tm M627
369. **Mifflin**, Martin David, 1968, Delineation of ground-water flow systems in Nevada: Ph.D. Hydrogeology, 213p.
Thesis 310 UMI 69-12568
370. **Miller**, Donn William, 1978, Hydrogeologic analysis of shallow hole temperatures at Allen Springs and Lee Hot Springs, Churchill County, Nevada: M.S. Hydrology, 73p.
Thesis 1232 UMI 13-11880
371. **Mindling**, Anthony Leo, 1965, An investigation of the relationship of the physical properties of fine-grained sediments to land subsidence in Las Vegas Valley, Nevada: M.S. Geological Engineering, 90p.
Thesis 22
372. **Miranda**, Fernando Pellon de, 1990, Reconnaissance geologic mapping of a heavily-forested shield area (Guiana Shield, northwestern Brazil): Ph.D. Geophysics, 174p.
Thesis 2723 UMI 91-17529
373. **Misener**, Ray Hammond, 1942, The pumping station of the Carlos Francisco Mine, Casalpaca, Peru, South America: Professional Degree of Mining Engineer, 45p.
Thesis Tm M678p
374. **Mitchell**, A. Wallace, 1977, Geology of some bedded barite deposits, north central Nevada: M.S. Geology, 58p.
Thesis 1160 UMI 13-11390
375. **Mitchell**, Burke M., 1986, An engineering analysis of the May 1983 rock slope failure on Slide Mountain, Nevada: M.S. Geological Engineering, 175p.
Thesis 2088 UMI 13-28444

376. **Mitson**, Scott Charles, 1990, Inhibition of hydrogen-oxygen-nitrogen diffusion flames by potassium and potassium superoxide: M.S. Metallurgical Engineering, 146p.
Thesis 2719 UMI 13-43024
377. **Mizell**, Nancy Brent Hunt, 1975, Quaternary geology of the central Truckee Meadows, Nevada: M.S. Geology, 68p.
Thesis 935 UMI 13-07963
378. **Mizell**, Stephen A., 1975, A preliminary study of flow-sediment transport in mountainous watersheds: M.S. Geology, 79p.
Thesis 947 UMI 13-08067
379. **Mock**, Ralph G., 1972, Correlation of land surfaces in the Truckee River valley between Reno and Verdi, Nevada: M.S. Geology, 91p.
Thesis 625
380. **Mohal**, Brij Raj, 1984, Microflotation studies of hexadecyl sulfate flotation of barite: M.S. Metallurgical Engineering, 101p.
Thesis 1853 UMI 13-23751
381. **Mohler**, Amy Szumigala, 1979, The Susanville earthquake sequence of 1976: M.S. Geophysics, 250p.
Thesis 1362 UMI 13-14546
382. **Molinari**, Mark Philip, 1984, Late Cenozoic geology and tectonics of Stewart and Monte Cristo Valleys, west-central Nevada: M.S. Geology, 124p.
Thesis 1927 UMI 13-25135
383. **Moore**, Donald Carl, 1971, Application of flotation kinetics to laboratory testing procedures: M.S. Metallurgical Engineering, 48p.
Thesis 552
384. **Morrice**, Edward, 1964, Electrowinning cerium and lanthanum metals from their oxides: Professional Degree of Mining Engineer, 84p.
Thesis 65
385. **Morris**, Joel M., 1954, Engineering and design of the Pyro metallurgical plant, Three Kids mine, Henderson, Nevada: Professional Degree of Metallurgical Engineer, 51p.
Thesis 64
386. **Morrison**, Roger Barron, 1964, Soil stratigraphy: principles, applications to differentiation and correlation of Quaternary deposits and landforms, and applications to soil science: Ph.D. Geology, 178p.
Thesis 186 UMI 65-10428
387. **Morrison**, William Robert, 1990, Comparison of deterministic, probabilistic, and rock mass classification methods of slope stability analysis at Bald Mountain Mine, Nevada: M.S. Geological Engineering, 124p.
Thesis 2611 UMI 13-40721
388. **Moss**, Kenneth Lee, 1987, Geological and geostatistical elements of ore-grade control at the Candelaria Mine, Mineral County, Nevada: M.S. Geology, 49p.
Thesis 2183 UMI 13-30750
389. **Mount**, Carol M., 1990, Geology of the Sierra City melange unit of the Shoo Fly Complex in the Lakes Basin region, northern Sierra Nevada, California: M.S. Geology, 86p.
Thesis 2712 UMI 13-42464
390. **Muto**, Paul, 1980, Geology and mineralization of the Willard mining district, Pershing County, Nevada: M.S. Geology, 62p.
Thesis 1485 UMI 13-16349
391. **Nadolski**, John A., 1979, A study of bedload and total sediment from the east-central Sierra Nevada: M.S. Hydrology, 94p.
Thesis 1324 UMI 13-13575
392. **Naff**, Richard Louis, 1973, Hydrogeology of the southern part of Amargosa Desert in Nevada: M.S. Geological Engineering, 207p.
Thesis 770
393. **Nair**, N. Ramachandran, 1982, Electrochemical corrosion studies on coated sheet steel: M.S. Metallurgical Engineering, 60p.
Thesis 1737 UMI 13-20505
394. **Nalbant**, Suleyman Sami, 1991, Lithologic and structural analysis of a part of western Turkey by using Landsat TM data: M.S., Geophysics, 114p.
Thesis 2890 UMI 13-47562
395. **Nam**, IkJung, 1991, Studies on the effect of data transformation on the Kriging estimation: M.S., Geology, 58p.
Thesis 2783 UMI 13-44814

396. **Narayan**, Ananth R., 1988, Fundamental studies on electrochemical production of Al-Li alloys from oxyfluoride melts: M.S. Metallurgical Engineering, 62p.
Thesis 2322 UMI 13-34151
397. **Navoy**, Anthony S., 1978, Assessment of management strategies for drought mitigation through a conjunctive use irrigation system in Smith Valley, Lyon County, Nevada: M.S. Hydrology, 149p.
Thesis 1299 UMI 13-12891
398. **Nelson**, Steven Wayne, 1975, The petrology of a zoned granitic stock, Stillwater Range, Churchill County, Nevada: M.S. Geology, 102p.
Thesis 931 UMI 13-07968
399. **Nesbitt**, Carl C., 1985, A study of the effect of using thiourea as a sulfide donor for metal sulfide precipitation from waste waters: M.S. Metallurgical Engineering, 62p.
Thesis 1987 UMI 13-26674
400. **Nesbitt**, Carl C., 1990, A study of the chlorination of gold: The effect of nascent chlorine, mechanism determination, the role of sulfide minerals and carbon, and the effect of multivalent cationic chloride salts: Ph.D. Metallurgical Engineering, 228p.
Thesis 2647 UMI 90-32553
401. **Nesbitt**, Mark B., 1957, Operation of the fluosolids and acid plant of the Anaconda Company, Weed Heights, Nevada: Professional Degree of Metallurgical Engineer, 20p.
Thesis 104
402. **Newman**, William J., 1955, Tungsten mining at the Getchell Mine: Professional Degree of Mining Engineer, 43p.
Thesis 153
403. **Nichol**, Michael R., 1983, Rock fall protection methods: M.S. Geological Engineering, 178p.
Thesis 1794 UMI 13-22236
404. **Nicholl**, Michael John, 1987, Computer assisted analysis of discontinuous rock masses: M.S. Geological Engineering, 178p.
Thesis 2187 UMI 13-30754
405. **Nimsic**, Thomas L., 1977, Control of montmorillonite swelling with electrolyte solutions: M.S. Geology, 51p.
Thesis 1115 UMI 13-09940
406. **Nitchman**, Steve P., 1988, Tectonic geomorphology and neotectonics of the San Luis Range, San Luis Obispo County, California: M.S. Geology, 120p.
Thesis 2355 UMI 13-34149
407. **Noel**, Donna Marie, 1991, Biodegradation of cyanide utilizing facultative anaerobic bacteria cultivated from mine samples: M.S., Metallurgy, 91 p.
Thesis 2766 UMI 13-44824
408. **Nork**, Diane M., 1987, The analysis of water level fluctuations in a shallow, unconfined aquifer in Owens Valley, California: M.S. Hydrology/Hydrogeology, 61p.
Thesis 2196 UMI 13-31033
409. **Nosker**, Richard Ernest, 1981, Stratigraphy, structure, geophysics, and water chemistry of the Jersey Valley area, Pershing and Lander Counties, Nevada: M.S. Geology, 88p.
Thesis 1539 UMI 13-17143
410. **Nosker**, Sue Anderson, 1981, Stratigraphy and structure of the Sou Hills, Pershing County, Nevada: M.S. Geology, 60p.
Thesis 1538 UMI 13-17144
411. **Nowak**, Gregory, 1979, The geology and uranium occurrences of the Washington mining district, Lyon County, Nevada: M.S. Geology, 92p.
Thesis 1330 UMI 13-13574
412. **Oberlander**, Phil Louis, 1978, Development of a quasi three-dimensional groundwater model for a portion of the Nevada Test Site: M.S. Hydrology, 89p.
Thesis 1255 UMI 13-11996
413. **Odt**, David Albert, 1983, Geology and geochemistry of the Sterling gold deposit, Nye County, Nevada: M.S. Geology, 100p.
Thesis 1800 UMI 13-22445
414. **Oldham**, Richard Lewis, 1971, Structural geomorphic analysis of the Virginia Mountains, Washoe County, Nevada: M.S. Geology, 120p.
Thesis 609
415. **Olds**, Edward B., 1955, Methods and costs of sinking Bunker Hill and Sullivan Mining and Concentrating Company's Crescent shaft: Professional Degree of Mining Engineer, 21p.
Thesis Tm OI44

416. **Oleson**, Susan Gayle, 1989, A multivariate statistical analysis of selected western Nevada reservoirs: implications for ecology of Stillwater Lakes, Nevada: M.S. Geology, 157p.
Thesis 2528 UMI 13-37713
417. **Oliveira**, José Auto Lancaster, 1981, The stratigraphy, petrology, and paleomagnetism of the Moss Flat area, Lake County, Oregon: Ph.D. Geology, 157p.
Thesis 1606 UMI 82-9715
418. **Olson**, George Harrison, 1970, Differentiation of Lake Lahontan sediments in western Nevada by grain size parameters: M.S. Geology, 40p.
Thesis 456
419. **O'Malley**, Peg Ann, 1980, Quaternary geology and tectonics of the Waucoba Wash 15-minute Quadrangle, Saline Valley, Inyo County, California: M.S. Geology, 142p.
Thesis 1455 UMI 13-15708
420. **Omofoma**, Matthew A., 1980, The study of surface properties of gangue minerals associated with chromite ores: M.S. Metallurgical Engineering, 88p.
Thesis 1410 UMI 13-15217
421. **Onuschak**, Emil, 1960, Carbonate compounds in some alluvial fans of northern Grass Valley, Nevada: M.S. Geology, 91p.
Thesis Tm 0n59
422. **Ornstein**, Peter, 1982, Numerical simulation of nondispersive contaminant transport: M.S. Hydrogeology, 197p.
Thesis 1699 UMI 13-19716
423. **Orsen**, David A., 1977, Correlation of selected Nevada lignite deposits by pollen analysis: M.S. Geology, 173p.
Thesis 1197 UMI 13-11214
424. **Osborne**, David H., 1963, Arsenic as an indirect geochemical guide to epithermal precious metal deposits: M.S. Mining Engineering, 69p.
Thesis Tm 0s81
425. **Osborne**, Marla A., 1985, Alteration and mineralization of the northern half of the Aurora mining district, Mineral County, Nevada: M.S. Geology, 93p.
Thesis 1975 UMI 13-26673
426. **Overton**, Theodore D., 1947, Mineral resources of Douglas, Ormsby and Washoe Counties: Professional Degree of Mining Engineer, 91p.
Thesis Tb 0v96
427. **Page**, Tench C., 1988, Geology, structural setting, and gold deposits of the Argus district, Inyo County, California: M.S. Geology, 142p.
Thesis 2372 UMI 13-35180
428. **Panian**, Thomas F., 1986, Spatial variability of hydraulic properties in an undisturbed alluvial soil: M.S. Hydrology/Hydrogeology, 156p.
Thesis 2080 UMI 13-28446
429. **Park**, Steven Lynn, 1983, Paleomagnetic stratigraphy, geochemistry and source areas of Miocene ash-flow tuffs and lavas of the Badger Mountain area, northwestern Nevada: M.S. Geology, 112p.
Thesis 1766 UMI 13-21593
430. **Parr**, Andrew Joseph, 1987, Geology, alteration, and mineralization at the Western World Lakes Cu-Zn prospect, Yuba County, California: M.S. Geology, 112p.
Thesis 2297 UMI 13-33122
431. **Passmore**, Gary William, 1975, Subsidence-induced fissures in Las Vegas, Nevada: M.S. Hydrology, 105p.
Thesis 923
432. **Paul**, Anand, 1986, Galvanic interactions between minerals: M.S. Metallurgical Engineering, 169p.
Thesis 2117 UMI 13-29106
433. **Pautsch**, Richard Joseph, 1978, A statistical analysis of hydrologic drought in the Humboldt Basin, Nevada: M.S. Hydrology, 104p.
Thesis 1234 UMI 11-11912
434. **Pease**, Robert Charles, 1979, Scarp degradation and fault history south of Carson City, Nevada: M.S. Geology, 90p.
Thesis 1326 UMI 13-13585
435. **Peck**, Michael Kent, 1977, Feasibility study of a wind hydro system in remote areas of Nevada: M.S. Hydrology, 70p.
Thesis 1185 UMI 13-10948

436. **Perry, John J.**, 1991, Detection and identification of a compositional zonation within an ash-flow tuff in the southwestern Nevada volcanic field: M.S., Geophysics, 79p.
Thesis 2847 UMI 13-46015
437. **Perry, Richard Michael**, 1985, Geology and mineral deposits of the northern half of the Mt. Tobin mining district, Pershing County, Nevada: M.S. Geology, 130p.
Thesis 1977 UMI 13-26672
438. **Peterson, David Michael**, 1976, The influence of selected precipitation and land use characteristics upon the water quality of urban runoff: M.S. Hydrology, 100p.
Thesis 1033 UMI 13-09158
439. **Phariss, Edward Irvin**, 1974, Geology and ore deposits of the Alpine mining district, Esmeralda County, Nevada: M.S. Geology, 114p.
Thesis 830
440. **Pidcoe, William W.**, 1977, Investigation of the hydrologic parameters of a topographic basin in relation to the modeling of the associated groundwater system: M.S. Hydrology, 56p.
Thesis 1304 UMI 13-13474
441. **Pittman, Kate L.**, 1984, Rock quality as a guide to fragmentation: M.S. Geological Engineering, 89p.
Thesis 1913 UMI 13-24854
442. **Plouf, Thomas Michael**, 1969, A study of surface properties of chrysocolla as related to sulfidization and flotation: M.S. Metallurgical Engineering, 50p.
Thesis 355
443. **Ponsler, Harley E.**, 1977, The geology and mineral deposits of the Garfield district, Mineral County, Nevada: M.S. Geology, 73p.
Thesis 1144 UMI 13-10377
444. **Pottorff, Edward J.**, 1988, A new approach for simulating heat transfer and groundwater flow in the Leach Hot Springs hydrothermal system, Pershing County, Nevada: M.S. Hydrology/Hydrogeology, 153p.
Thesis 2424 UMI 13-35802
445. **Powers, Sandra L.**, 1978, Jasperoid and disseminated gold at the Ogee-Pinson Mine, Humboldt County, Nevada: M.S. Geology, 112p.
Thesis 1227 UMI 13-11905
446. **Price, Donald R.**, 1981, Hydrogeologic study of groundwater-surface water interactions at Topaz Lake, Nevada: M.S. Hydrology, 187p.
Thesis 1577 UMI 13-17766
447. **Priest, George R.**, 1974, Eruptive history and geochemistry of the Little Walker volcanic center, east central California: M.S. Geology, 99p.
Thesis 845
448. **Priestley, Keith Ferrin**, 1974, Earth strain observations in the western Great Basin: Ph.D. Geophysics, 185p.
Thesis 841 UMI 75-05300
449. **Prokop, Christopher Jon**, 1983, The engineering properties of alluvial/colluvial fault scarp soils in the western Basin and Range, and their influence on fault scarp morphology/dating: M.S. Geological Engineering, 154p.
Thesis 1796 UMI 13-22235
450. **Puchlik, Kenneth Phillip**, 1972, Nickel mineralization associated with early ultramafic intrusions of the Sierra Nevada: M.S. Geology, 80p.
Thesis 642
451. **Pulido, Oscar H.**, 1983, Geology and alteration of the Quilmana porphyry copper prospect, Lunahuana, Department of Lima, Peru: M.S. Geology, 56p.
Thesis 1807 UMI 13-22446
452. **Pullman, Steven A.**, 1983, The petrography and petrology of a portion of the northern Cedar Mountains, Mineral County, Nevada: M.S. Geology 130p.
Thesis 1762 UMI 13-21594
453. **Purington, Paul Richard**, 1985, Geology of the Indian Spring area, northern Washoe County, Nevada: M.S. Geology, 94p.
Thesis 1935 UMI 13-25833
454. **Putney, Thomas R.**, 1985, Geology, geochemistry, and alteration of the Seligman and Monte Cristo stocks, White Pine mining district, White Pine County, Nevada: M.S. Geology, 152p.
Thesis 1986 UMI 13-26682
455. **Pyper, Randall**, 1981, Studies on thiourea leaching of finely-divided gold ores: M.S. Metallurgical Engineering, 65p.
Thesis 1550 UMI 13-17142

456. **Quade**, Jack Gehring, 1973, An evaluation of multifrequency systems at the Crow Springs mining district, Esmeralda County, Nevada: M.S. Geology, 94p.
Thesis 742
457. **Rai**, Vijai Narain, 1968, Geology of a portion of the Nightingale and Truckee Ranges, Washoe and Pershing Counties, Nevada: M.S. Geology, 45p.
Thesis 276
458. **Rai**, Vijai Narain, 1972, Pennsylvanian brachiopods of Nevada: Ph.D. Geology, 135p.
Thesis 632 UMI 72-24049
459. **Rajala**, John Alex, 1981, The effects of increasing ionic strength, collector chain length, and temperature on the anionic flotation of oxide minerals: M.S. Metallurgical Engineering, 100p.
Thesis 1529 UMI 13-17141
460. **Raker**, Sarah L., 1987, Chemistry of groundwater in tuffaceous rocks central Nevada: M.S. Geology, 111p.
Thesis 2171 UMI 13-29972
461. **Ralston**, Edward Charles, 1984, Geology and mineralization of a part of the Nelson Range, Inyo County, California: M.S. Geology, 177p.
Thesis 1912 UMI 13-24855
462. **Ramelli**, Alan Ray, 1988, Late Quaternary tectonic activity of the Meers Fault, southwest Oklahoma: M.S. Geology, 123p.
Thesis 2329 UMI 13-34145
463. **Ramsdell**, Jack D., 1958, Recrystallization of cold-swaged commercially-pure vanadium: M.S. Metallurgical Engineering, 27p.
Thesis Tm R182
464. **Ranta**, Donald Eli, 1967, Supergene enrichment at the Betty O'Neal Mine, Lander County, Nevada: M.S. Geological Engineering, 47p.
Thesis 214
465. **Rauch**, Paul, 1989, Optimum conditions for the Fenton's reagent treatment of pentachlorophenol in a simplified system: M.S. Hydrogeology, 33p.
Thesis 2472 UMI 13-36837
466. **Rehwooldt**, Eric Bruce, 1989, Effects of abandoned underground workings on open pit slope stability: M.S. Geological Engineering, 273p.
Thesis 2592 UMI 13-39323
467. **Renken**, Paul, 1980, The geology of the Montgomery Creek mining district and the R & S Mine area, Benton Quadrangle, California-Nevada: M.S. Geology, 47p.
Thesis 1425 UMI 13-15347
468. **Rennie**, Douglas Paul, 1987, Late Pleistocene alpine glacial deposits in the Pine Forest Range, Nevada: M.S. Geology, 54p.
Thesis 2198 UMI 13-31030
469. **Rhodes**, Jonathan J., 1985, A reconnaissance of hydrologic nitrate transport in an undisturbed watershed near Lake Tahoe: M.S. Hydrology, 254p.
Thesis 1974 UMI 13-26671
470. **Richardson**, Larie Kenneth, 1975, Geology of the Alabama Hills, California: M.S. Geology, 146p.
Thesis 933
471. **Richins**, William D., 1974, Earthquake swarm near Denio, Nevada, February to April, 1973: M.S. Geophysics, 57p.
Thesis 849
472. **Riva**, John F., 1957, Geology of a portion of the Diamond Range, White Pine County, Nevada: M.S. Geological Engineering, 50p.
Thesis 52
473. **Robbins**, Charles Henry, 1985, Geology of the Lantern property near the Scossa mining district, Pershing County, Nevada: M.S. Geology, 89p.
Thesis 1993 UMI 13-26777
474. **Roberts**, Kevin Patrick, 1990, Residual stress-induced failure mechanisms of three types of granodiorite, central Sierra Nevada, California: M.S. Geological Engineering, 160p.
Thesis 2684 UMI 13-41909
475. **Rogers**, David Keith, 1975, Environmental geology of northern Carson City, Nevada: M.S. Geological Engineering, 133p.
Thesis 1005 UMI 13-08525

476. **Romig**, Woodfred Edward, 1927, The Latouche caving system: Professional Degree of Mining Engineer, 53p.
Thesis Tm R765
477. **Ronkos**, Charles Joseph, 1981, Geology, alteration, and mineralization in the pyroclastic and sedimentary deposits of the Bretz-Aurora Basin, McDermitt Caldera, Nevada-Oregon: M.S. Geology, 92p.
Thesis 1512 UMI 13-17078
478. **Roquemore**, Glenn R., 1981, Active faults and associated tectonic stress in the Coso Range, California: Ph.D. Geology, 134p.
Thesis 1553 UMI 82-445
479. **Ross**, Wyn Charles, 1990, A two-dimensional simulation of tritium transport in the vadose zone at the Nevada Test Site: M.S. Hydrogeology, 81p.
Thesis 2667 UMI 13-41377
480. **Roth**, James G., 1988, Delineation of the Railroad Valley flow system using a deuterium-calibrated groundwater model: M.S. Hydrology/Hydrogeology, 156p.
Thesis 2439 UMI 13-35786
481. **Royse**, Susan E., 1986, Soil geochemical study of the altered zones associated with the Gooseberry Mine area, Storey County, Nevada: M.S. Geochemistry, 105p.
Thesis 2146 UMI 13-29832
482. **Rudy**, Samuel, 1972, A study of the electrolytic oxidation of cinnabar ore for the recovery of mercury: M.S. Metallurgical Engineering, 42p.
Thesis 671
483. **Sadler**, William Reagan, 1990, A deuterium-calibrated, discrete-state compartment model of regional groundwater flow, Nevada Test Site and vicinity: M.S. Hydrology/Hydrogeology, 249p.
Thesis 2706 UMI 13-42463
484. **Sahoo**, Purusottam, 1986, Solubility of nickel and cobalt in alumina saturated iron silicate slags: M.S. Metallurgy, 101p.
Thesis 2050 UMI 13-28231
485. **Salehi**, Reza, 1989, Microflotation investigations of soluble salts: M.S. Metallurgical Engineering, 63p.
Thesis 2603 UMI 13-39294
486. **Sales**, John Keith, 1966, Structural analysis of the Basin Range province in terms of wrench faulting: Ph.D. Geology, 178p.
Thesis 95 UMI 67-02242
487. **Saulnier**, George J., 1978, Genesis of the saline waters of the Green River Formation, Piceance Basin, northwestern Colorado: Ph.D. Hydrology, 120p.
Thesis 1217 UMI 78-21264
488. **Savage**, William Underwood, 1975, Earthquake probability models: Recurrence curves, aftershocks, and clusters: Ph.D. Geophysics, 137p.
Thesis 993 UMI 76-16486
489. **Sawyer**, Fritz-Peter, 1987, Sodium hypochlorite pretreatment for heap leaching gold ores: M.S. Metallurgical Engineering, 117p.
Thesis 2207 UMI 13-31031
490. **Sawyer**, Thomas Len, 1990, Quaternary geology and neotectonic activity along the Fish Lake Valley fault zone, Nevada and California: M.S. Geology, 379p.
Thesis 2698 UMI 13-42207
491. **Scales**, Bert, 1961, Geology of the Applebush Hill area, south Antelope Valley, Nye County, Nevada: M.S. Geology, 50p.
Thesis Tm Sca281
492. **Schaff**, Schuyler C., 1976, The 1968 Adel, Oregon, earthquake swarm: M.S. Geophysics, 63p.
Thesis 1090 UMI 13-9667
493. **Scheibach**, Robert Bruce, 1975, Geothermal occurrences in Truckee Meadows, Washoe County, Nevada: M.S. Hydrology, 74p.
Thesis 953 UMI 13-8072
494. **Schroeder**, Charles Warren, 1970, The use of amphoteric surfactants as flotation collectors: M.S. Metallurgical Engineering, 54p.
Thesis 447
495. **Schroth**, Brian K., 1987, Water chemistry reconnaissance geochemical modeling in the Meadow Valley Wash area, southern Nevada: M.S. Hydrology/Hydrogeology, 97p.
Thesis 2218 UMI 13-31377

496. **Schryver**, Robert F., 1961, Geology of the Mound House area, Ormsby and Lyon Counties, Nevada: M.S. Geology, 47p.
Thesis Tm Sch382
497. **Schuyler**, Donald Richard, 1962, Some mechanical properties of lanthanum metal: M.S. Geology, 40p.
Thesis Tm Sch397
498. **Scott**, James B., 1959, Structure of the ore deposits at Santa Barbara, Chihuahua, Mexico: Professional Degree of Geological Engineer, 33p.
Thesis Tm Sco427s
499. **Scott**, James Walter, 1923, On the development of an efficient charcoal for the precipitation of gold and silver from their cyanide solutions: M.S. Metallurgy, 54p.
Thesis Tm Sco427
500. **Scott**, Jeffrey Lynn, 1983, The effects of pretreatment conditions, ionic strength, collector type, chain length and temperature on the cationic flotation of oxide minerals: M.S. Metallurgical Engineering, 155p.
Thesis 1782 UMI 13-22001
501. **Scott**, Troy Calvin, 1985, Investigation of the Murray landfill - An uncontrolled hazardous waste site: M.S. Hydrology/Hydrogeology, 98p.
Thesis 2044 UMI 13-28228
502. **Seidl**, Richard F., 1982, Geology and uranium evaluation of the Dry Valley tuffs, Washoe County, Nevada: M.S. Geology, 83p.
Thesis 1666 UMI 13-18995
503. **Sequeira**, Everton Conrad, 1979, Insitu leaching: The effect of temperature and pressure on the permeability of uranium bearing rock: M.S. Mining Engineering, 82p.
Thesis 1370 UMI 13-14673
504. **Sharp**, Gregory A., 1988, Solute transport in fractal heterogeneous porous media: M.S. Hydrology/Hydrogeology, 71p.
Thesis 2369 UMI 13-34823
505. **Sheridan**, Jon P., 1988, The effect of ore type, depth, and leach time on cyanide species in column tests using NaCN leach solutions: M.S. Metallurgical Engineering, 171p.
Thesis 2352 UMI 13-34153
506. **Shevenell**, Lisa, 1990, Chemical and isotopic investigation of the new hydrothermal system at Mount St. Helens, Washington: Ph.D. Hydrology/Hydrogeology, 282p.
Thesis 2704 UMI 91-10598
507. **Shields**, Hilbert Nathaniel, 1982, Comparative geology and geochemistry with respect to precious metal mineralization of selected California Coast Range mercury mining districts: M.S. Geology, 122p.
Thesis 1752 UMI 13-21595
508. **Shrivastava**, Sanjay, 1991, Synthesis and characterization of glass-ceramics from SPL waste: M.S., Metallurgical Engineering, 141p.
Thesis 2876 UMI 13-46781
509. **Shump**, Kenneth W, 1985, Streamflow and water quality effects of groundwater discharge to Steamboat Creek, Nevada: M.S. Hydrology, 101p.
Thesis 2055 UMI 13-28233
510. **Silva**, Frank, 1923, Problems in cyaniding a complex base ore with log of tests made, flow sheet, and equipment decided upon as the best adapted to treat the ore: Professional Degree of Mining Engineer, 54p.
Thesis Tm SI580
511. **Singh**, Gajendra Pal, 1984, Laboratory studies on cleaning of slags from copper smelters: M.S. Metallurgical Engineering, 100p.
Thesis 1840 UMI 13-23755
512. **Sirles**, Phil C., 1987, Shear-wave velocity and attenuation analysis of liquefiable soils in the south Truckee Meadows, Washoe County, Nevada: M.S. Geophysics, 187p.
Thesis 2165 UMI 13-29822
513. **Smith**, Alfred Merritt, 1908, Comparative mining and milling operations in Costa Rica and Nevada: Degree of Mining Engineer, 13p.
Thesis Prof. 20
514. **Smith**, Cassius Crowell, 1911, The Minerva Mine and survey methods employed in connection with the same at Atlanta, Idaho: Professional Degree of Mining Engineer, 15p.
Thesis Tm Sm644

515. **Smith, Corliss M., Jr.**, 1980, Public relations of the minerals industries: M.S. Mining Engineering, 72p.
Thesis 1504 UMI 13-16698
516. **Smith, Kenneth D.**, 1991, Earthquake processes: Seismotectonics of the 1984 Round Valley, California, earthquake sequence and radiated energy and the seismic spectrum: Ph.D., Geophysics, 137p.
Thesis 2849 UMI 92-06924
517. **Smith, Michael Roy**, 1981, Geology and mineralization of the southeastern Gillis Range, Mineral County, Nevada: M.S. Geology, 103p.
Thesis 1585 UMI 13-17880
518. **Smith, Thomas Edward**, 1971, Geology, economic geochemistry, and placer gold resources of the western Clearwater Mountains, east central Alaska: Ph.D. Geology, 441p.
Thesis 495 UMI 71-23024
519. **Smyth, William Isaac**, 1927, Ventilation problems of the Tonopah-Belmont mine: Professional Degree of Mining Engineer, 152p.
Thesis 238
520. **Snyder, Kenneth Dele**, 1989, Geology and mineral deposits of the Rossi Mine area, Elko County, Nevada: Ph.D. Geology, 198p.
Thesis 2527 UMI 90-04373
521. **Soeller, Stephen Anton**, 1978, Quaternary and environmental geology of Lemmon Valley, Nevada: M.S. Geology, 70p.
Thesis 1239 UMI 13-11908
522. **Soltani Ghasemi, Amir Mohammad**, 1986, Determination of in-situ stresses within rock masses using the acoustic emission technique: M.S. Geological Engineering, 158p.
Thesis 2110 UMI 13-29107
523. **Sonderman, Frank James**, 1971, The geology of the Weepah mining district, Esmeralda County, Nevada: M.S. Geology, 85p.
Thesis 574
524. **Spane, Frank A., Jr.**, 1977, Evaluation of factors influencing the inorganic water-quality regimen of Carson River, Carson Valley, Nevada-California: Ph.D. Hydrology, 205p.
Thesis 1192 UMI 78-10014
525. **Spatz, David Moore**, 1988, Genetic, spectral, and Landsat thematic mapper imagery relationships between desert varnish and tertiary volcanic host rocks, southern Nevada: Ph.D. Geology, 347p.
Thesis 2393 UMI 89-04116
526. **Spencer, Elizabeth B.**, 1990, A radiocarbon study of groundwater in the western Nevada Test Site and vicinity: M.S. Hydrology/Hydrogeology, 124p.
Thesis 2628 UMI 13-40725
527. **Spencer, Ronald J.**, 1977, Silicate and carbonate sediment-water relationships in Walker Lake, Nevada: M.S. Geochemistry, 98p.
Thesis 1125 UMI 13-10367
528. **Sprecher, Terry Ann**, 1985, Wallrock alteration vein structure and preliminary fluid-inclusion studies, Gooseberry Mine, Storey County, Nevada: M.S. Geology, 93p.
Thesis 2014 UMI 13-27122
529. **Squillace, Richard Z.**, 1985, The electrowinning of dilute zinc sulfate solutions in a fluidized bed electrochemical reactor: M.S. Metallurgical Engineering, 69p.
Thesis 2026 UMI 13-27509
530. **Stathis, George J.**, 1960, Geology of the southern portion of Spanish Springs Valley Quadrangle, Nevada: M.S. Geology, 83p.
Thesis Tm S1797
531. **Stephens, Robert W.**, 1958, Fine particle flotation in a differential pressure system: M.S. Metallurgy, 73p.
Thesis Tm S1835
532. **Stevens, David Lee**, 1971, The geology and ore deposits of the Antelope (Majuba Hill) mining district, Pershing County, Nevada: M.S. Geological Engineering, 89p.
Thesis 562
533. **Strawson, Frederick MacLeod, Jr.**, 1981, The geology of the Permian Carbon Ridge Formation, east-central Nevada: M.S. Geology, 140p.
Thesis 1578 UMI 13-17767
534. **Strobel, Robert J.**, 1986, Stratigraphy and structure of the Paleozoic rocks in the Rush Creek drainage, northern Ritter Range pendant, California: M.S. Geology, 124p.
Thesis 2150 UMI 13-29827

535. **Sulahria**, Mohammad Bashir, 1972, Prediction of water retentive capacity of high elevation snowpacks on the east side of the Sierra Nevada: Ph.D. Hydrology, 115p.
Thesis 708 **UMI 73-12903**
536. **Svoboda**, Mark Scott, 1988, The depositional and petrographic analysis of the Diamond Peak Formation in western White Pine County, Nevada: M.S. Geology, 187p.
Thesis 2305 **UMI 13-34182**
537. **Swain**, Robert L., 1958, Block caving at Braden Copper Company's Teniente Mine: Degree of Engineer of Mines, 29p.
Thesis Tm Sw971
538. **Swanson**, Kirk Edward, 1990, Statistical analysis of snow-pack stability in the northern Sierra Nevada, California: M.S. Geological Engineering, 240p.
Thesis 2619 **UMI 13-40743**
539. **Szecsody**, James Edward, 1982, Use of major ion chemistry and environmental isotopes to delineate subsurface flow in Eagle Valley, Nevada: M.S. Hydrology, 195p.
Thesis 1715 **UMI 13-20159**
540. **Tafari**, William Joseph, 1973, A geochemical study of the barite deposits of Mineral County, Nevada: M.S. Geology, 69p.
Thesis 806
541. **Taylor**, Joseph K., 1982, Geology of the Nevada Scheelite Mine, Mineral County, Nevada: M.S. Geology, 94p.
Thesis 1669 **UMI 13-18998**
542. **Taylor**, Kendrick C., 1987, Application of borehole geophysical methods to shallow groundwater investigations: Ph.D. Hydrology/Hydrogeology, 186p.
Thesis 2191 **UMI 87-21360**
543. **Taylor**, Michael Francis, 1969, A survey of soil freezing on the east side of the Sierra Nevada: M.S. Hydrology, 187p.
Thesis 368
544. **Thiesse**, Mark F., 1988, Geology of Paleozoic basinal rocks in the northern Fox Range, Washoe County, Nevada: M.S. Geology, 86p.
Thesis 2403 **UMI 13-35164**
545. **Thomas**, Trevor James, 1985, Geology of the Buffalo Valley prospect, Lander County, Nevada: M.S. Geology, 118p.
Thesis 1991 **UMI 13-26778**
546. **Tingley**, Icy Cathryn, 1986, Geology, petrology, and tungsten mineralization of the southern Lodi Hills, Nye County, Nevada: M.S. Geology 327p.
Thesis 2062 **UMI 13-28227**
547. **Tingley**, Joseph V., 1963, Guides to exploration in the Sierra Nevada tungsten province: M.S. Mining Engineering, 72p.
Thesis Tm T5881
548. **Tippett**, Michael Charles, 1967, The geology of the Copper Basin ore deposits, Lander County, Nevada: M.S. Mining Engineering, 31p.
Thesis 225
549. **Tjong**, Fat Kwong, 1990, The effect of particle size on heat of immersion of bituminous high volatile Pittsburgh seam coal: M.S. Metallurgical Engineering, 110p.
Thesis 2739 **UMI 13-43227**
550. **Tokoro**, Atsuo, 1959, Sigma phase formation in binary alloys of the transition elements: M.S. Metallurgical Engineering, 52p.
Thesis Tm T646
551. **Trivedi**, Nikhilesh Chandrakant, 1970, Electrokinetic behaviour of asbestos minerals as a function of aging time in water: M.S. Metallurgy, 70p.
Thesis 457
552. **Troutman**, Thomas William, 1979, The Kings Canyon lineament, central California: M.S. Geology, 93p.
Thesis 1331 **UMI 13-13784**
553. **Trudeau**, Douglas A., 1979, Hydrogeologic investigation of the Littlefield Springs: M.S. Hydrology, 136p.
Thesis 1348 **UMI 13-14254**
554. **Truschel**, Anthony D., 1983, A reservoir-routing model calibration method relating storage elements to basin geomorphology for peak runoff prediction from extreme summer storm events in unaged arid watersheds: M.S. Hydrology, 140p.
Thesis 1822 **UMI 13-22567**

555. **Tsai**, Hsu-Chin, 1988, Prediction of heats of mixing of multicomponent systems using local composition models: M.S. Metallurgical Engineering, 317p.
Thesis 2373 UMI 13-35181
556. **Tsui**, Ping-Sheng, 1985, Spatial and temporal variabilities of subsurface drainage in irrigated agriculture: Ph.D. Hydrology, 165p.
Thesis 1950 UMI 85-19725
557. **Tyler**, Scott Woodman, 1990, Fractal applications to soil hydraulic properties: Ph.D. Hydrology/Hydrogeology, 67p.
Thesis 2666 UMI 91-02004
558. **Van Brunt**, Bruce H., 1989, A geostatistical study of the Manhattan gold deposit: M.S. Mining Engineering, 142p.
Thesis 2717 UMI 13-43027
559. **Van Gilder**, Kerry L., 1963, The manganese ore body at the Three Kids Mine, Clark County, Nevada: M.S. Geology, 94p.
Thesis Tm V253
560. **VanWormer**, James D., 1967, Solid earth tides as a triggering mechanism for earthquakes: M.S. Geophysics, 69p.
Thesis 242
561. **Varnum**, Nick C., 1987, Application of geographic information systems techniques to assess natural hazards in the east-central Sierra Nevada: M.S. Geological Engineering, 62p. (plus appendices)
Thesis 2306 UMI 13-34183
562. **Waggoner**, Raymond Russell, 1975, Environmental geology problems of Pyramid Lake basin: M.S. Geology, 95p.
Thesis 934
563. **Waichler**, Scott R., 1991, Prediction of land subsidence due to groundwater withdrawal in Las Vegas Valley, Nevada: M.S., Hydrology/Hydrogeology, 120p.
Thesis 2786 UMI 13-44831
564. **Walker**, Nancy Denning, 1986, Remote sensing analysis of southern Walker Lane: M.S. Geology, 117p.
Thesis 2069 UMI 13-28445
565. **Walker**, Patrick M., 1981, Geologic hazard analysis of suburban development on alluvial deposits in the Basin and Range province: M.S. Geology, 163p.
Thesis 1604 UMI 13-18142
566. **Walkiewicz**, John W., 1973, The effects of selected fabrication parameters on the magnetic properties of Sm-Co permanent magnets: M.S. Metallurgy, 36p.
Thesis 735
567. **Wallace**, Andy Bert, 1975, Geology and mineral deposits of the Pyramid district, southern Washoe County, Nevada: Ph.D. Geology, 162p.
Thesis 955 UMI 76-11188
568. **Walter**, William Russell, 1991, High frequency seismic source spectra from earthquakes and explosions: Ph.D., Geophysics, 134p.
Thesis 2771 UMI 91-31279
569. **Ward**, Timothy James, 1973, Relationship of basin characteristics to selected water chemistry parameters in upper Carson River basin: M.S. Geological Engineering, 102p.
Thesis 800
570. **Watson**, Phillip Charles, 1977, Dendrochronologic reconstruction of water levels for Pyramid Lake, Nevada, 1745 to 1904 A.D.: M.S. Hydrogeology, 124p.
Thesis 1133 UMI 13-10500
571. **Weaver**, Sarah C., 1982, The hydrogeochemistry of the principal aquifers in Las Vegas Valley, Nevada and the chemical effects of artificial recharge of Colorado River water: M.S. Hydrology, 159p.
Thesis 1732 UMI 13-20496
572. **Weaver**, Stephen George, 1982, The geology of the Bovard mining district, Gabbs Valley Range, Mineral County, Nevada: M.S. Geology, 84p.
Thesis 1631 UMI 13-18997
573. **Wei**, Tien-Lin, 1983, The role of protonated anionic modifier species in oxide mineral flotation: M.S. Metallurgical Engineering, 84p.
Thesis 1797 UMI 13-22239
574. **Weick**, Rodney J., 1990, Structural, tectonic and Quaternary study of the eastern Madeline Plains, California and southwestern Smoke Creek Desert, Nevada: M.S. Geology, 160p.
Thesis 2727 UMI 13-43031

575. **Weiss**, Steven I., 1987, Geologic and paleomagnetic studies at the Stonewall Mountain and Black Mountain volcanic centers, southern Nevada: M.S. Geology, 67p.
Thesis 2186 **UMI 13-30749**
576. **Welch**, Alan Herbert, 1985, Geothermal resources of the western Black Rock Desert, northwestern Nevada: Hydrology and aqueous geochemistry: Ph.D. Hydrology/Hydrogeology, 139p.
Thesis 2040 **UMI 86-08694**
577. **Wells**, John H., 1970, Placer examination principles and practice: Engineer of Mines, 155p.
Thesis 451
578. **Wells**, Mary E., 1991, An engineering analysis of the Elder Creek landslide, Alpine County, California: M.S., Geological Engineering, 180p.
Thesis 2881 **UMI 13-48284**
579. **Wendell**, Daniel E., 1985, Geology, alteration, and geochemistry of the McGinness Hills area, Lander County, Nevada: M.S. Geology, 123p.
Thesis 1976 **UMI 13-26681**
580. **Westall**, A. H., 1923, Increasing profits by selective mining: Professional Degree of Mining Engineer, 20p.
Thesis 329
581. **Westhoff**, David Edward, 1979, Application of kinematic wave theory to estimation of runoff from selected areas of Nevada: M.S. Hydrology, 95p.
Thesis 1337 **UMI 13-13789**
582. **Westphal**, Jerome Anthony, 1973, Digital simulation of inorganic water quality of Tahoe-Truckee system, Nevada-California: Ph.D. Hydrology, 220p.
Thesis 784 **UMI 74-07855**
583. **Weyler**, Paul Anthony, 1965, Mineral beneficiation of a granite from the Gold Butte district, Clark County, Nevada: M.S. Metallurgical Engineering, 48p.
Thesis Tm W548
584. **Wheeler**, Alfred H., 1956, Natural air drying of diatomaceous earth: M.S. Mining Engineering, 34p.
Thesis Tm W562
585. **White**, Craig Kenneth, 1969, Geology of the San Diego onshore-offshore area, southern California: M.S. Geology, 90p.
Thesis 359
586. **Whitney**, Robert A., 1980, Structural-tectonic analysis of northern Dixie Valley, Nevada: M.S. Geology, 65p.
Thesis 1464 **UMI 13-15871**
587. **Whitney**, Robert A., 1991, Faulting and tectonics in the foreland basin fold/thrust belt of the San Juan Province, Argentina, and a comparison to the Yakima fold/thrust belt of the northwestern United States: Ph.D. Geology, 184p.
Thesis 2752 **UMI 91-26401**
588. **Wickwire**, Joy McIntosh, 1979, A pilot study to evaluate effects of Blackwood Creek channel restoration work on suspended sediment yield: M.S. Hydrology, 89p.
Thesis 1384 **UMI 13-14519**
589. **Widzyk**, Eleonora, 1991, Computer simulation and control of the mine locomotive system: M.S., Mining Engineering, 219p.
Thesis 2865 **UMI 13-46776**
590. **Wigglesworth**, John Bradley, 1984, Geology and geochemistry of the Almanor and Glidden barite deposits, northern California: M.S. Geology 103p.
Thesis 1846 **UMI 13-23756**
591. **Wilson**, Geoffrey Evans, 1975, Experimental and field studies of scheelite in tactite deposits of the Stormy Day mine, Pershing County, Nevada: M.S. Geology, 108p.
Thesis 954 **UMI 13-08082**
592. **Wilson**, George M., 1960, Geophysical investigations in the Humboldt River valley near Winnemucca, Nevada: M.S. Geology, 30p.
Thesis Tm W748
593. **Witte**, Margaret Kent, 1976, A study of the residence time distribution curves of a rotary tubular reactor for processing slimy ores: M.S. Metallurgical Engineering, 105p.
Thesis 1044 **UMI 13-09368**

594. **Wolverson**, Nancy Jean, 1987, Geology and hydrothermal alteration of the Palmetto property, Esmeralda County, Nevada: M.S. Geology, 82p.
Thesis 2290 UMI 13-32559
595. **Wong**, Thomas, 1991, Knoop microhardness anisotropy on the cleavage plane of single crystals with the calcite structure: M.S., Metallurgical Engineering, 111p.
Thesis 2763 UMI 13-44807
596. **Yang**, Zhaoguang, 1990, Fluoride wastes from mineral industry processing plants: Ph.D. Metallurgical Engineering, 125p.
Thesis 2690 UMI 91-06830
597. **Young**, Peter Frederick, 1956, Physical properties and microstructures of a selected portion of the titanium-vanadium-silicon alloy system: M.S. Physical Metallurgy, 44p.
Thesis Tm Y75
598. **Yue**, Liangdong, 1988, Modeling the kinetics of platinum and palladium dissolution in aqua regia in spent automotive catalysts using a liquid fluidized bed reactor: M.S. Metallurgical Engineering, 66p.
Thesis 2314 UMI 13-34158
599. **Zeizel**, Eugene Paul, 1967, An evaluation of a variable water supply for Lovelock Valley, Nevada: M.S. Hydrology, 30p.
Thesis 212
600. **Zellnsky**, Anne E., 1980, Geologic aspects of geothermal development in northern Dixie Valley, Nevada: M.S. Geology, 102p.
Thesis 1422 UMI 13-15345
601. **Zellmer**, John T., 1977, Environmental and engineering geology study of Bridgeport Valley, Mono County, California: M.S. Geological Engineering, 211p.
Thesis 1129 UMI 13-10378
602. **Zellmer**, John Theodore, 1980, Recent Deformation in the Saline Valley region: Inyo County, California: Ph.D. Geology, 168p.
Thesis 1419 UMI 80-26626
603. **Zhang**, Jianjun, 1990, Later aftershocks of the March 2, 1987, Edgcumbe, New Zealand, earthquake: M.S. Geophysics, 53p.
Thesis 2671 UMI 13-41568
604. **Zhang**, Jinrong, 1991, Mechanisms of cyanide attenuation in soils: Ph.D., Metallurgical Engineering, 162p.
Thesis 2878 UMI 92-13729
605. **Zinner**, Ronald Eric, 1983, Geohydrology of the Rainy Creek igneous complex near Libby, Montana: M.S. Geological Engineering, 106p.
Thesis 1795 UMI 13-22240
606. **Zones**, Christe P., 1958, Petrographic and petrofabric study of the metamorphic rocks north of Carson City, Ormsby County, Nevada: M.S. Geology, 80p.
Thesis Tm Z76p.

Thesis List by Degrees Conferred

- Engineer of Mines:** 171, 230, 537
- Geochemistry:**
MS: 127, 209, 481, 527
- Geological Engineer, Professional Degree of:** 193, 244, 335, 341, 498
- Geological Engineering:**
MS: 9, 18, 32, 57, 65, 69, 85, 93, 107, 163, 164, 177, 194, 222, 251, 258, 293, 298, 300, 301, 326, 327, 333, 336, 359, 360, 363, 368, 371, 375, 387, 392, 403, 404, 441, 449, 464, 466, 472, 474, 475, 522, 532, 538, 561, 569, 578, 601, 605
- Geology:**
MS: 1, 3, 10, 19, 20, 24, 28, 30, 37, 38, 40, 43, 44, 46, 47, 49, 53, 55, 58, 59, 61, 62, 64, 66, 70, 77, 79, 80, 81, 86, 90, 92, 95, 96, 97, 98, 100, 101, 103, 104, 105, 108, 110, 111, 112, 114, 115, 117, 119, 120, 122, 126, 128, 133, 134, 136, 138, 140, 142, 143, 144, 145, 147, 150, 151, 155, 157, 158, 166, 167, 168, 173, 174, 179, 180, 181, 184, 185, 186, 187, 190, 192, 199, 200, 202, 203, 206, 208, 211, 215, 219, 223, 224, 227, 233, 234, 236, 238, 239, 240, 241, 246, 249, 256, 260, 262, 263, 264, 268, 269, 270, 271, 272, 273, 277, 278, 285, 286, 290, 291, 295, 302, 303, 305, 307, 310, 313, 329, 330, 340, 345, 347, 348, 350, 351, 352, 353, 354, 365, 367, 374, 377, 378, 379, 382, 388, 389, 390, 395, 398, 405, 406, 409, 410, 411, 413, 414, 416, 418, 419, 421, 423, 425, 427, 429, 430, 434, 437, 439, 443, 445, 447, 450, 451, 452, 453, 454, 456, 457, 460, 461, 462, 467, 468, 470, 473, 477, 490, 491, 496, 497, 502, 517, 521, 523, 528, 530, 533, 534, 536, 540, 541, 544, 545, 546, 552, 559, 562, 564, 565, 572, 574, 575, 579, 585, 586, 590, 591, 592, 594, 600, 606
PhD: 29, 39, 45, 82, 102, 139, 162, 196, 214, 218, 231, 247, 250, 252, 255, 267, 282, 308, 386, 417, 458, 478, 486, 518, 520, 525, 567, 587, 602
- Geophysics:**
MS: 15, 27, 87, 165, 260, 312, 321, 322, 342, 381, 394, 436, 471, 492, 560, 603
PhD: 83, 339, 372, 448, 488, 516, 568
- Hydrogeology:**
MS: 23, 48, 63, 67, 68, 71, 84, 94, 106, 116, 121, 152, 154, 161, 169, 195, 207, 216, 279, 281, 287, 288, 289, 317, 323, 328, 334, 346, 357, 358, 408, 422, 428, 444, 465, 479, 480, 483, 495, 501, 504, 526, 563, 570
PhD: 11, 16, 369, 542, 557, 576
- Hydrology:**
MS: 6, 12, 13, 23, 25, 31, 42, 51, 56, 60, 71, 74, 84, 94, 106, 121, 141, 146, 152, 154, 160, 161, 170, 175, 178, 207, 213, 216, 229, 232, 245, 259, 279, 280, 281, 287, 289, 294, 296, 297, 311, 314, 315, 317, 323, 328, 334, 337, 346, 358, 366, 370, 391, 397, 408, 412, 428, 431, 433, 435, 438, 440, 444, 446, 469, 480, 483, 493, 495, 501, 504, 526, 539, 543, 553, 554, 563, 571, 581, 588, 599
PhD: 11, 26, 35, 36, 41, 75, 89, 99, 113, 132, 254, 265, 275, 487, 524, 535, 542, 556, 557, 576, 582
- Metallurgical Engineer, Professional Degree:** 72, 332, 385, 401
- Metallurgical Engineering:**
MS: 2, 4, 7, 8, 14, 21, 22, 33, 34, 52, 88, 91, 123, 124, 125, 130, 131, 137, 148, 149, 172, 176, 183, 189, 197, 198, 204, 205, 210, 221, 225, 228, 235, 248, 257, 276, 283, 284, 304, 309, 318, 325, 331, 343, 344, 349, 361, 362, 376, 380, 383, 393, 396, 399, 400, 420, 432, 442, 455, 459, 463, 482, 485, 489, 494, 500, 505, 529, 549, 550, 555, 573, 583, 593, 595, 596, 598
PhD: 5, 604
- Metallurgy:**
MS: 135, 355, 407, 484, 499, 531, 551, 566
- Mining Engineer, Professional Degree:** 50, 73, 76, 153, 212, 217, 220, 237, 242, 253, 299, 320, 324, 364, 373, 384, 402, 415, 426, 476, 519, 580
- Mining Engineering:**
MS: 17, 54, 78, 109, 118, 129, 156, 159, 188, 190, 201, 226, 243, 266, 274, 292, 306, 319, 356, 424, 503, 515, 547, 548, 558, 584, 589
- Physical Metallurgy:**
MS: 182, 316, 597

Subject Index with List Numbers

All sites are in Nevada unless otherwise stated.

accounting - mining: *see* mine accounting

acid rain: 216

acoustic emission: 93, 522

Adel, Oregon - earthquake: 492

adsorption: 284

aeration zone: 154

aeromagnetic prospecting: 15

aggregate(s): 298

Alabama Hills, Calif.: 470

Alaska

–geology: 302, 518

–mining: 230, 476, 518

Alaska Canyon, Humboldt County: 181

algae: 63

alkali industry and trade: 217

alkalic igneous rocks: 217

allanite: 143

Allen Springs, Churchill County: 370

Alligator Ridge, White Pine County: 306

alloys: 182, 550, 597

alluvial deposits/alluvium: 428, 565

Alpine County, Calif.: 569, 578

Alpine district, Esmeralda County: 439

Alpine Meadows, Calif.: 538

aluminum: 225, 396, 508

Amargosa Desert, Nye County: 140, 392

American Potash and Chemical Corp.: 320

American River, Calif.: 13

amphiboles: 338

Anaconda Company: 118, 401

anaerobic bacteria: 407

anchorage (engineering): 403

anisotropy: 595

anodic oxidation: 22, 380, 459, 573

Antarctica: 360

Antelope district, Pershing County: 532

Antelope Springs district, Pershing County: 77

Applebush Hill area, Nye County: 491

aquifers: 69, 480

Arabia district, Pershing County: 122

Argentina: 31, 587

argentite: 240

argon *see* potassium-argon aging

Arizona: 53, 103, 553

arsenic: 148, 424

asbestos: 204, 551

asbestos fibers: 8

ash-flow tuff *see* volcanic ash, tuff

Ash Meadows, Nye County: 251

Asia: 54

Atlanta district, Lincoln County: 110

atomic absorption: 221

Aurora district, Mineral County: 201, 333, 425

automotive catalysts: 598

avalanches: 538, 561

Badger Mountain area: 429

Bagdad district, Ariz.: 103

Bald Mountain mine, White Pine County: 387

barite deposits/metallurgy: 189, 264, 374, 380, 540, 590

barium: 156

basalt: 177

Basin and Range province

see Great Basin

bastnaesite: 189

Battle Formation: 142

bed load: 170, 391

Belmont mine *see* Tonopah-Belmont mine

Belmont district, Nye County: 305

Benton Range, Calif.: 208

Beowawe, Eureka County: 121

Betty O'Neal Mine, Lander County: 464

biohums - Nevada: 108

Bishop Creek, Elko County: 185

Black Mountain, Mineral County: 239, 575

Black Rock Desert, Pershing County: 576

Black Rock Range, Humboldt County: 246

Blackbird cobalt ore: 125

Blackwood Creek, Calif.: 588

blasting: 109, 274

boring: 109, 274, 335

boron: 509

Bovard district, Mineral County: 572

Brachiopoda fossil: 458

Braden Copper Company, Chile: 137, 537

Brazil: 372

Bretz-Aurora Basin, Nev.-Ore.: 477

Bridgeport Valley, Calif.: 601

Brock Canyon area, Eureka County: 327

Brunswick Canyon area, Ormsby and Douglas Counties: 150

Buckhorn gold mine, Eureka County: 173

Buckskin Mine, Douglas County: 192

Buckskin Range, Douglas County: 82

Buffalo Valley prospect, Lander County: 545

Bunkerhill and Sullivan Mining and Concentrating Company, Idaho: 415

Butte Mountains, White Pine County: 105

calcite: 210, 528

calcium/carbonate: 331, 527

–alloys: 332

calderas, Nev.: 525

California

- geology: 9, 18, 25, 37, 51, 57, 59, 68, 80, 95, 97, 114, 117, 119, 126, 140, 144, 164, 166, 167, 168, 177, 208, 209, 216, 219, 224, 238, 251, 268, 272, 278, 282, 295, 300, 310, 322, 342, 345, 353, 365, 381, 389, 406, 419, 427, 430, 447, 461, 467, 470, 473, 488, 507, 516, 534, 538, 543, 552, 574, 578, 585, 590, 601, 602
- mineral resources: 78, 95, 118, 144, 209, 219, 272, 282, 320, 353, 427, 467, 507, 590
- water supply/quality: 13, 25, 51, 160, 163, 175, 195, 328, 366, 391, 408, 446, 450, 524, 543, 569, 582, 588, 601
- see also* county and local names in California
- Cambrian stratigraphy: 365
- Candelaria district, Mineral County: 174, 466
- Candelaria mine, Mineral County: 388
- carbon alloys: 344
- carbon compounds: 5
- Carbon Ridge area, Eureka County: 347
- Carbon Ridge Formation: 533
- carbonate
 - minerals: 595
 - reservoirs: 15, 536
 - rocks: 16
 - see also* calcium carbonate
- Carlin, Elko County: 520
- carnotite: 267
- Carson City: 42, 157, 170, 275, 291, 359, 434, 475, 524, 539, 606
- see also* Ormsby County
- Carson River, Nev.-Calif.: 524
- Carson Valley, Carson City and Douglas County: 275, 524
- cassiterite: 147
- caving process: 212, 476
- Cedar Mountains, Mineral County: 452
- Cenozoic stratigraphy: 81, 295, 382
- Central America
 - seismology: 87
 - mining: 513
- cerium: 384
- cesium: 280
- Chalk Mountain district, Churchill County: 62
- Chehel-Koureh ore deposits: 159
- chemical precipitation: 399
- chemical reactions/reactors: 7, 593
- chemical systems: 325, 555
- Chihuahua, Mexico: 498
- Chile: 137, 212, 537
- China Lake, Calif.: 18
- chlorides: 68
- chlorine: 135, 400
- chromite: 7, 420
- chrysocolla: 442
- Churchill County: 63, 159
 - geology: 1, 19, 62, 70, 104, 151, 211, 236, 259, 277, 370, 398, 409, 586, 600
 - mineral resources: 583
 - water supply: 599
- Cinnabar ore: 482
- Clark County
 - geology: 132, 238, 367, 371, 385, 431, 553,
 - mines and mineral resources: 553
- water supply/underground: 56, 132, 152, 203, 571
- clay: 164, 255, 405
- Clear Creek, Carson City: 42, 170
- Clearwater Mountains, Alaska: 518
- climate: 317
- coal: 304, 549
 - desulfurization: 130
 - see also* lignite
- Coal Valley, Lyon County: 423
- Coal Valley, Washoe County: 43
- Coaldale, Esmeralda County: 423
- coasts: 32
- cobalt: 4, 33, 484
- cobalt catalysts: 362
- Cold Spring Valley, Washoe County: 141,
- colloids: 287
- Colorado: 252, 350, 487
- Colorado River: 571
- Comstock Lode: 102
- Contact district, Elko County: 191
- Contra Costa County, Calif.: 164
- Copenhagen Canyon, Eureka County: 46
- copper: 4, 14, 52, 72, 78, 137, 212, 242, 250, 271, 276, 442, 451, 511, 537
 - recycling: 52
 - see also* porphyry copper
- Copper Basin ore deposits, Lander County: 548
- Copper Chief mine, Douglas County: 271
- Cordero mercury ore: 343
- Cornucopia district, Elko County: 340
- Corral Canyon area, Churchill County: 211
- corrosion (resistant materials): 2, 393
- Coso Range, Calif.: 478
- Costa Rica: 513
- CP Hills, Nye County: 81
- Creede district, Colorado: 252
- Crescent mine shaft, Idaho: 415
- Cretaceous stratigraphy: 196, 247
- Crow Springs district, Esmeralda County: 456
- cryopedology: 543
- Crystal Peak, Washoe County: 423
- crystalline rocks: 120
- crystallization: 316
- crystallography: 131, 231
- Cuba: 242
- Cucomungo area, Esmeralda County: 55
- cyanide process/wastes: 73, 355, 407, 499, 505, 510, 604
- Daisy mine, Nye County: 349
- Darcy's law: 69
- Darwin mines, Inyo County, Calif.: 118
- Denio, Humboldt County: 471

- deposition *see* sedimentation and deposition
 Desert Peak, Churchill County: 236
 determinative mineralogy *see* mineralogy, determinative
 deuterium measurement: 480, 483
 Devonian stratigraphy: 261
 Diablo Canyon Nuclear Powerplant, Calif.: 406
 Diamond Peak Formation: 38, 347, 536
 Diamond Range, Eureka and White Pine Counties: 134, 223, 472
 diatomaceous earth: 584
 dielectrics: 304
 Dinkey Creek pendant, Calif.: 365
 dithiocarbamates: 149, 283
 Divide district, Esmeralda County: 199
 Divide tungsten ore: 318
 Dixie Valley, Churchill County: 19, 51, 154, 259, 277, 279, 409, 410, 586, 600
 Dodge Flat, Washoe County: 51
 Dogskin Mountain, Washoe County: 256
 domes: 86
 Douglas County
 –geology: 82, 138, 150, 192, 271, 446, 569
 – mineral resources: 138, 271, 426
 –water quality/supply: 60, 275, 469
 drill-hole cores *see* boring
 drought - Nevada: 358, 433
 Dry Valley, Washoe County: 502
- Eagle Valley, Carson City: 539
 earth movements and building: 359, 431
see also subsidence
 earth tides: 339, 381, 448, 560
 earthquakes: 462, 488, 490, 512, 560, 603
 –Calif.: 322, 326, 488, 516
 – Nevada: 27, 187, 202, 206, 359, 339, 471, 488, 562
 –Oregon: 492
 effluent: 172
 Egan Range, White Pine County: 206
 El Dorado County, Calif.: 9
 electrochemical analysis: 172
 electrochemical corrosion: 2, 393
 electro dialysis: 21
 electrokinetics: 91, 551
 electrolysis: 396
 electrolytes: 172
 electrometallurgy: 21, 225, 331, 332, 384, 482, 508, 529
 electrophoresis: 205
 electrorefining: 52
 Elko County
 –geology: 185, 178, 191, 261, 340, 520
 – mineral resources: 423, 520
 Emerald Bay, Calif.: 9
 emulsions: 91
 engineering, structural *see* structural engineering
- environmental geology: 291, 475, 521, 562, 601
 Esmeralda County
 –geology: 55, 92, 199, 382, 439, 467, 523, 594
 – mineral resources: 220, 423, 439, 456
 Eureka County - geology: 10, 46, 121, 134, 173, 200, 223, 327, 347, 472, 533
 eutrophication: 124
 evapotranspiration: 323
 Excelsior Mountains, Mineral County: 47
- facies: 269
 faults/faulting: 18, 45, 107, 126, 140, 167, 286, 382, 406, 434, 449, 462, 478, 486, 490, 516, 552, 565, 574, 587
 feldspar: 111, 120, 231
 Fenton's Reagent Treatment: 465
 fermi surfaces: 210
 Ferron Sandstone, Utah: 247
 fertilizer: 217
 fire extinguishing: 361
 Fish Lake Valley, Calif. and Nev.: 490
 Flagstaff Mountain, Washington: 264
 flocculation: 197
 floods/control/forecasting: 146, 301, 535, 561
 Florida: 16
 flotation: 91, 135, 149, 189, 197, 205, 283, 304, 349, 383, 442, 459, 485, 494, 500, 531, 549, 573
 flumes: 170
 fluorides: 596
 fluorspar: 349
 fluidic devices: 245
Foraminifera: 68, 114, 268
 Fox Range, Washoe County: 136, 290, 544
 fractals: 32, 85, 504, 557
 Frenchman Flat, Nevada Test Site: 315, 479
- Gabbs Valley Range, Mineral County: 572
 galvanomagnetic: 432
 Gamma rays: 247
 Garden Valley Formation: 10
 Garfield district, Mineral County: 443
 Garfield Hills, Mineral County: 312
 gas *see* natural gas
 gasoline storage: 288
 gas flow: 106
 geochemical prospecting: 20, 127, 272, 277, 356, 424
 geochemistry: 112, 195, 255, 269, 447, 518
 geographic information systems: 561
 geohydrology: 605
 geologic hazards: 157, 565
 geological mapping: 90, 372, 394
 geology, environmental *see* environmental geology
 geology, isotope *see* isotope geology
 geology, petroleum *see* petroleum geology
 geology, statistical methods: 32
see also geostatistics

- geology, stratigraphic *see* stratigraphic geology
 geology, structural *see* structural geology
 geomorphology: 119, 144, 157
 geophysical prospecting: 275
 geophysics: 342
 geostatistics: 222 *see also* geology, statistical methods
 geothermal resources: 19, 64, 121, 184, 236, 259, 277, 370, 493, 576, 579, 600
 see also hot springs
 Getchell mine, Humboldt County: 402
 Gillis Canyon, Mineral County: 214
 Gillis Range, Mineral County: 214, 517
 glacial deposits/sediments: 167, 468
 Gold Butte district, Clark County: 583
 gold
 –metallurgy: 183, 400, 499
 –mines/mining/deposits: 111, 237, 243, 306, 324, 413, 427, 437, 499, 507, 518
 see also placer deposits/mining
 –ores: 5, 127, 190, 228, 356, 413, 445, 455, 489, 499, 558
 see also placer deposits
 Golden Trout Wilderness, Calif.: 195
 Golden Valley, Washoe County: 23
 Goldfield, Esmeralda County: 220
 Gooseberry mine, Storey County: 481, 528
 granite: 474, 583
 granodiorite - Sierra Nevada: 300
 Grass Valley, Humboldt and Pershing Counties: 421
 Great Basin: 39, 64, 87, 112, 145, 165, 224, 317, 342, 346, 356, 448, 486, 565, 574
 Greece: 217
 Green Mountain, Calif.: 219
 Green River Formation, Colo.: 487
 Grider Creek, Siskiyou County, Calif.: 37
 grinding applications/processes: 176
 Groom district, Lincoln County: 253
 groundwater: 29, 39, 42, 67, 71, 75, 94, 99, 132, 139, 178, 207, 218, 230, 232, 279, 288, 297, 311, 337, 357, 369, 412, 444, 446, 479, 480, 483, 509, 526, 542, 563
 see also underground water
 Gull Lake pendant, Calif.: 278
 gypsum: 156, 217

 Hailey gold belt: 234
 Hallelujah Formation: 295
 Hallelujah Junction, Calif.: 95
 Hasbrouck Mountain, Esmeralda County: 199
 Hawaii: 301
 hazardous waste site: 501
 hazards *see* natural hazards
 heap leaching *see* leaching
 heat of mixing: 325, 555
 heavy minerals: 43
 hematite: 284, 309, 573
 Hilltop district, Lander County: 128

 Hot Creek Range: 162
 hot springs: 184, 334, 444, 493, 506, 579
 see also geothermal resources
 Humboldt County:
 geology: 79, 181, 184, 218, 246, 311, 348, 351, 402, 421, 429, 468, 471, 477
 mineral resources: 445
 Humboldt River: 89, 218, 311, 433, 592
 hydraulic engineering/mining/transportation: 35, 54, 226, 230, 577
 hydraulics: 67, 207, 369, 408, 542, 581
 hydrocarbons: 288
 hydroelectric generators: 435
 hydrogeochemistry: 6, 23, 571
 hydrogeology: 6, 11, 12, 71, 173, 281, 334, 346, 370, 446, 479, 542, 553
 hydrology: 11, 26, 31, 35, 39, 41, 42, 65, 75, 89, 99, 146, 161, 170, 175, 207, 230, 245, 279, 281, 328, 354, 408, 504, 526, 554, 571
 hydrometallurgy: 343
 hydrothermal deposits: 19, 102, 162, 173, 174, 199, 234, 262, 263
 hypochlorite: 5

 Idaho: 234, 415, 514
 igneous rocks: 155, 217
 Illipah mine, White Pine County: 222
 Ilocos Norte Mining Company, Philippines: 153
 in situ processing: 503
 Indian Spring, Washoe County: 453
 Indian Wells Canyon district, Kern County, Calif.: 59
 infrared imaging/sensing: 90, 308
 intrusions: 100
 Inyo County, Calif.: 118, 140, 166, 251, 419, 427, 461, 470, 478, 602
 ions: 127
 iron alloys: 88
 Iron County, Utah: 147
 iron ore: 147, 159, 266
 iron slags: 4
 irrigation (farming): 89, 397, 556
 island arcs: 117, 603
 isostasy: 145
 isotope geology: 64

 Jackson Mountains: 181
 jasperoid: 445
 Jersey Valley, Pershing and Lander Counties: 409
 Johnnie district, Nye County: 262
 Julcani Volcanic Center, Peru: 86
 Jurassic stratigraphy: 114

 Kane Springs Wash Volcanic Center, Lincoln County: 90
 Kennecott Copper Corp.: 171

- Kern County, Calif.: 59
 Keystone mine, Storey County: 129
 kilns, rotary: 385
 Kings Canyon, Calif.: 552
 Kinsley Mountains: 127
 Klondike district, Esmeralda County: 92
 Knoxville Formation, Calif.: 114
 Kriging estimation: 395
- La Plata Canyon, Churchill County: 70
 Lahontan Reservoir, Lyon and Churchill Counties: 63
 Lake Lahontan (ancient): 79, 307, 418
 Lake Tahoe, Calif./Nev.: 342, 469, 582
 see also Tahoe Basin
 Lakes Basin, Calif.: 389
 land reclamation: 217
 land subdivision: 303
 land use planning: 561
 landfill, sanitary *see* sanitary landfill
 Lander County
 geology: 128, 374, 409, 545, 548, 579
 mineralogy: 24, 464, 545
 Landsat satellite: 394
 see also satellites
 landslides: 57, 164, 561, 578
 lanthanum: 384, 497
 Las Vegas Valley, Clark County: 56, 132, 203, 371, 431, 563, 571
 Lassen County, Calif.: 95, 144, 168, 295
 latitude: 177
 Latouche caving system: 476
 Leach Hot Springs, Pershing County: 444
 leachate: 34
 leaching: 5, 123, 228, 240, 319, 448, 489, 503
 lead: 2, 135, 316
 – alloys: 332
 – mines/mining: 118
 Lee Hot Springs, Churchill County: 370
 Lemmon Valley, Washoe County: 521
 Libya: 6, 12
 lignite deposits: 423
 see also coal
 limestone: 351, 337
 Lincoln County - geology: 90, 110, 253, 367
 lithium: 396
 Little Walker Volcanic Center, Calif.: 447
 Littlefield Springs, Ariz.: 553
 Lodi Hills, Nye County: 546
 Long Valley caldera, Calif.: 321
 Lovelock Valley, Pershing and Churchill Counties: 599
 Luning Tungsten-Molybdenum Prospect, Mineral County: 180
 Lyon County: 63
 – geology: 42, 133, 411, 496
 – mineral resources: 423
- Madeline Plains, Calif.: 574
 McDermitt caldera, Nev.-Ore.: 477
 McDermitt mine, Humboldt County: 348
 McGinness Hills, Lander County: 579
 magmatism: 155
 magnesite: 341
 magnetic materials: 14
 magnets: 14, 566
 Majuba Hill district, Pershing County: 532
 Mammoth Lakes, Calif.: 322, 516
 manganese ores: 385, 559
 Manhattan gold deposit: 558
 Marietta, Mineral County: 44, 270
 Mariposa County, Calif.: 219
 Marshall Islands: 232
 mathematical models: 56, 69, 71, 75, 113, 225, 226, 248, 317, 325, 444, 563, 568, 598
 Martin's Ridge, Nye County: 28
 Meadow Valley Wash: 495
 Melones fault, Calif.: 209
 mercury (ore): 20, 272, 343, 348, 482, 507
 Mesozoic stratigraphy: 81, 117
 metallurgy: 73, 183, 210, 248, 318, 385, 432, 500, 555
 – powder *see* powder metallurgy
 metals
 – analysis: 183
 – recycling: 52, 362
 Mexico: 16, 83, 498
 microhardness: 595
 Millet Ranch, Nye County: 100
 milling *see* ore dressing
 mills, design and construction: 76
 Minas de Matahambre, Cuba: 242
 mine *see also* mining
 – accounting: 50, 129, 415
 – blasts: 27
 – filling: 17
 – finance: 243
 – haulage: 17, 589
 – management: 188, 319, 513, 580
 – pumps: 137
 – railroads: 589
 – valuation: 222, 558
 – ventilation: 519
 Mineral County
 – geology: 44, 45, 47, 108, 174, 180, 201, 214, 239, 270, 285, 312, 329, 330, 333, 382, 388, 425, 443, 452, 467, 517, 527, 532, 541, 572
 – mineral resources: 540
 mineral deposits - frequency in Nev.: 244
 see also specific name of mineral
 mineral industry:
 – finances: 243
 – public relations: 515
 Mineral Range, Utah: 231
 mineralogical chemistry: 309, 338, 540

- mineralogy, determinative: 101, 120
 Minerva mine, Idaho: 514
 mining *see also* mineral industry; mine; strip mining
 -conditions: 513
 -districts - distribution in Nevada: 244
 see also specific names of districts
 -engineering: 153, 159, 171, 274, 292, 415, 432,
 476, 519, 537, 580
 -equipment/machinery: 17, 76, 137, 292, 373, 385,
 510, 593
 -finances: 50, 243
 -solution *see* solution mining
 Miocene stratigraphy: 330
 Mississippian stratigraphy: 38, 261, 269, 536
 Missouri: 501
 mixing machinery: 593
 Mohave County, Ariz.: 53
 molybdenite: 22
 molybdenum: 55, 180, 454, 545
 Monitor Range: 28, 46, 327
 Mono County, Calif.: 97, 166, 208, 278, 321, 447, 467,
 601
 Montana: 605
 Monte Cristo stocks: 454
 Monte Cristo Valley, Esmeralda County: 382
 Montgomery Creek district, Calif.-Nev.: 467
 montmorillonite: 405
 Mott Canyon Creek, Douglas County: 569
 Mound House area, Ormsby and Lyon Counties: 496
 Mount Diablo, Calif.: 164
 Mount Rose, Washoe County: 561
 Mount Rose Quadrangle, Washoe County: 107
 Mount Saint Helens, Washington: 506
 Mount Tobin district, Pershing County: 437

 N.A.S.A. Arizona Sedimentary Test Site: 53
 natural gas: 364
 natural hazards: 561
 see also specific hazard
 Naval Weapons Center, China Lake, Calif.: 18
 Nelson Range, Calif.: 461
 neotectonics: 140, 238, 406
 Nevada Porphyry Gold Mines, Inc.: 237
 Nevada scheelite mine, Mineral County: 541
 Nevada Test Site: 48, 81, 213, 229, 281, 287, 315, 412,
 479, 483, 526
 Nevada Volcanic Field: 263, 436
 New Cornelia copper smelter: 72
 New Idria mine, Calif.: 272
 New Mexico: 94
 New Washoe City: 357
 New Zealand: 603
 Newark Valley, White Pine County: 536
 nickel (ore): 4, 484, 450
 Nightingale Mountains/Range, Pershing and Washoe
 Counties: 30 158, 457
 nitrates: 315
Nodularia spumigena: 124

 nuclear explosions in Nevada: 27
 see also underground nuclear explosions
 Nye County
 -geology: 3, 28, 81, 100, 140, 162, 229, 251, 263,
 262, 305, 313, 349, 374, 392, 413, 428, 491, 519,
 526, 546, 575
 -mineral resources: 237, 299, 455, 546
 see also Nevada Test Site

 Oklahoma: 462
 Ogee-Pinson mine, Humboldt County: 445
 oil wells, fields: 115, 364
 oleic acid: 309
 Olinghouse district, Washoe County: 186
 ore
 -dressing: 76, 91, 220, 276, 510, 593, 596
 -sampling: 34, 129, 220
 -transportation: 226
 Oregon: 417, 477
 Ormsby County: 150, 426, 496, 606
 see also Carson City
 Owens Lake/Valley, Calif.: 80, 167, 328, 408
 oxidation-reduction: 380, 459, 573
 oxides: 112, 500
 oxidizing agents: 148

 Pahump Valley, Nye County, Nev. and Inyo County,
 Calif.: 238, 251
 paleoecology
 -Calif.: 66
 -Nev.: 98, 108, 330
 paleogeography: 308, 389
 paleomagnetic stratigraphy: 429
 paleontology - Nev.: 98, 313
 Paleozoic stratigraphy: 117, 261, 389, 534, 544
 palladium: 598
 Palmetto property, Esmeralda County: 594
 paragenesis: 174
 Peavine district, Washoe County: 249
 Peavine Mountain, Washoe County: 116, 194
 Pennsylvanian stratigraphy: 38, 458
 pentachlorophenol: 465
 Permian stratigraphy: 10, 117, 246, 313, 351
 Pershing County
 -geology: 77, 122, 158, 215, 227, 352, 368, 390,
 409, 410, 421, 437, 449, 457, 473, 532, 576, 591
 -water supply: 444, 599
 Peru: 61, 86, 233, 373, 451
 Petersen Mountain, Washoe County: 95, 179
 petroleum geology: 15, 268
 petrology: 329, 394, 398, 452, 567
 phase rule and equilibrium: 550
 Phelps Dodge Corp.: 72
 Philippines: 153
 phosphates: 257
 Piceance Basin, Colo.: 487
 Pilot Mountains, Mineral County: 108

- Pine Forest Range: 468
 Pine Grove district, Lyon County: 133
 Pine Nut Range, Douglas County: 82, 138
 Piñon Range: 261
 Pismo syncline, Calif.: 286
 Placer County, Calif.: 117, 538
 placer deposits/mining: 230, 237, 518, 577
 plants *see* vegetation
 plate tectonics: 389, 448, 587
 platinum: 209, 362, 598
 playas: 145
 Pleistocene stratigraphy: 64, 468
 Plumas County, Calif.: 353
 plutonium: 100
 pneumatic tube transportation: 17
 pollutants/pollution *see* water pollutants/pollution
 population: 49
 porphyry copper: 250, 353
 porous materials: 504
 potash: 320
 potassium: 376
 potassium-argon aging: 367
 powder metallurgy: 198
 precipitation: 314, 317
 Prison Hill area, Ormsby County [Carson City]: 150
 prospecting, aeromagnetic *see* aeromagnetic
 prospecting
 prospecting, chemical *see* chemical prospecting
 prospecting, geochemical *see* geochemical prospecting
 prospecting, geophysical *see* geophysical prospecting
 public relations *see* mineral industry - public relations
 punch card systems: 129
 Puzzle Vein, Colo.: 252
 Pyramid district, Washoe County: 567
 Pyramid Lake, Washoe County: 124, 307, 562, 567,
 570
 pyrites: 130
- quartz: 197, 290, 425
 Quaternary stratigraphy: 80, 151, 224, 238, 286, 377,
 386, 406, 419, 462, 490, 574
 Quinn River, Humboldt County: 351
- Rabbit Hill Formation, Eureka County: 200
 radioactive
 –substances: 44
 –tracers: 71
 –waste disposal: 280, 281
 see also waste disposal in ground
 radioisotopes: 287, 526
 Ragged Top Caldera, Pershing County: 227
 Ragged Top district, Pershing County: 215
 railroads *see also* mine railroads
 –ballast: 363
 Railroad Valley: 480
 Rainier Mesa, Nye County: 230
- reclamation *see* land reclamation
 recycling: 52, 508
 Red Canyon district, Douglas County: 138
 Red Rock area, Washoe County: 143, 179
 Red Rock Canyon, Calif.: 95
 Reese River Valley, Lander County: 24
 remote sensing: 15, 45, 90, 102, 151, 308, 336, 345,
 346, 372, 394, 416, 436, 456, 525, 564
 Reno: 74, 342
 see also Truckee Meadows
 reservoirs: 35, 146
 rhenium: 221
 rhyodacite domes: 86
 rhyolite: 147
 Ritter Range pendant, Calif.: 534
 roads: 255
 Roberts Mountains: 261
 rock(s)
 –crystalline *see* crystalline rocks
 –deformation: 93
 –igneous *see* igneous rocks
 –measurement: 32, 522
 –mechanics: 85, 441, 466, 474, 522
 –pressure: 403
 –slides: 9, 375, 387, 404
 –ultramafic *see* ultramafic rocks
 rockets (aeronautics): 361, 376
 Rockland district, Lyon County: 133
 Rossi mine, Elko County: 520
 Round Valley, Calif.: 516
 Ruby Hill mine, Douglas County: 271
 runoff: 36, 116, 265, 450, 535, 581
 see also streamflow; surface water
 rural conditions in Nev.: 303
 Ruth, White Pine County: 171
 Ryan Canyon, Mineral County: 329
- Saline Valley, Calif.: 602
 saline waters: 487
 salts: 485
 San Diego, Calif.: 585
 San Gabriel Mountains, Calif.: 326
 San Juan Basin, New Mexico: 94
 San Luis Obispo County, Calif.: 286
 San Luis Range, Calif.: 406
 sand dunes: 151
 Sand Springs district, Churchill County: 104
 Sand Springs Range, Churchill County: 1
 sanitary landfill: 501, 562
 Santa Barbara, Mexico: 498
 Santa Maria Basin, Calif.: 345
 satellites (aerial): 346 *see also* Landsat satellite
 scheelite: 591
 Scossa district, Pershing County: 473
 sediment transport: 170, 588
 sedimentation and deposition: 29, 295, 330, 378
 sediments, glacial *see* glacial sediments

- seepage: 169
 seismic refraction: 294
 seismic waves: 83, 321, 326, 568
 seismology: 27, 83, 87, 165, 187, 202, 224, 291, 312, 339, 475, 488, 492, 512, 516, 587
see also earthquakes
 Seligman stock: 273, 454
 separation technology: 210
 serpentine: 257, 551
 serpentinite: 209
 sewage disposal: 84
 shale: 101, 164, 269
 Shasta County, Calif.: 590
 Sheep Pass Formation: 206
 Shoshone Mountains, Nye County: 3
 Sierra City, Calif.: 389
 Sierra Nevada: 26, 78, 117, 209, 216, 224, 254, 278, 282, 300, 308, 365, 366, 389, 391, 450, 474, 535, 538, 543, 547, 561
 silicates/silicon: 88, 551, 597
 silver
 -metallurgy: 235, 356, 499
 -mines: 78, 118, 464
 -ores: 174, 235, 240, 340, 437, 473
 Silver City district, Storey County: 129
 Silver Dyke mine, Mineral County: 285
 Silver Lake, Washoe County: 116
 simulation methods: 41, 366, 589
 sintering: 198
 Siskiyou County, Calif.: 37
 slag: 88, 248, 511
 Slide Mountain, Washoe County: 375
 slurry: 54
 Smith Valley, Lyon County: 397
 Smoke Creek Desert, Washoe County: 574
 Snow Lake pendant: 308
 snow surveys/pack: 254, 366, 535, 538
 sodium hypochlorite: 489
 soils: 2, 36, 65, 127, 154, 164, 173, 216, 255, 265, 315, 386, 481
 -mechanics: 258, 354, 405, 428, 512, 543, 557, 604
 -moisture: 314
 -percolation: 113, 154, 169, 281, 354, 465
 -pollution: 465
 -temperature: 154
 solution mining: 115, 325
 Sou Hills, Pershing County: 410
 South Africa - gold mines: 324
 South America: 61, 86, 137, 212, 372
see also specific country
 South Antelope Valley, Nye County: 491
 Soviet Union: 568
 Spanish Springs Valley, Washoe County: 207, 530
 Sparks, Washoe County: 74
 spectrophotometry: 221, 356
 spectrum analysis: 284
 Spring Mountains, Nye County: 251
 springs: 251
 see also underground water
 stable isotope tracers: 64
 steel: 2, 88, 393
 Steptoe Valley, Elko County: 178
 Sterling gold deposit, Nye County: 413
 Stewart Valley, Mineral County: 238, 330, 382
 Stillwater Lakes: 416
 Stillwater Range, Churchill County: 70, 398
 Stonewall Mountain, Nye County: 575
 Storey County: 129, 297, 298, 481, 528
 Stormy Day mine, Pershing County: 591
 stratigraphic geology: 200, 206, 214, 247, 261, 496
 see also Cambrian stratigraphy; Cenozoic stratigraphy; Devonian stratigraphy; Jurassic stratigraphy; Mesozoic stratigraphy; Miocene stratigraphy; Mississippian stratigraphy; Paleozoic stratigraphy; Pennsylvanian stratigraphy; Permian stratigraphy; Pleistocene stratigraphy; Quaternary stratigraphy; Tertiary stratigraphy; Triassic stratigraphy
 stream channelization: 588
 Steamboat Creek: 509
 streamflow: 31, 41, 169, 218
 strip mining: 387, 466
 strontium: 156, 280
 structural engineering: 403
 structural geology: 261, 285, 308, 310, 335, 394, 403, 404, 472, 492, 522, 552, 574, 586
 subsidence: 69, 431, 563
 sulfates: 255
 sulfidization: 442
 sulfide ores: 149, 219, 220, 282
 sulfides: 88, 283, 355, 399, 430
 sulfur mines: 401
 sulfuric acid: 21
 supercritical fluids: 362
 supergene enrichment: 464
 surface chemistry: 8
 surface water: 99, 124, 132, 446
 see also runoff; streamflow; snow surveys; water
 Susanville, Calif. - earthquakes: 381
 suspended sediment: 391
 Sweetwater Mountains, Calif.-Nev.: 224
 Tahoe Basin, Calif.-Nev.: 163
 see also Lake Tahoe
 Tahoe City, Calif.: 84
 tailings: 33, 73, 293, 505
 tectonics: 167, 312, 574, 587
 see also neotectonics; plate tectonics
 Telegraph Pass, White Pine County: 134
 tephrostratigraphy: 367
 Tertiary stratigraphy: 196
 Texas: 337
 thaumasite: 255

- thermal properties: 131
 thermal stress: 115
Thiobacillus ferrooxidans: 240
 thiocyanate: 355
 thiosulfates: 228
 thiourea: 399
 Three Kids Mine, Clark County: 385, 559
 Tick Canyon, Washoe County: 423
 Timber Mountain, Nye County: 263
 tin mines/mining: 54
 titanium: 21, 597
 titanium alloys: 344
 Tonopah-Belmont mine, Nye County: 519
 Topaz Lake, Nev.-Calif.: 60, 446
 trace elements: 96
 Transverse Ranges, Calif.: 310
 Triassic stratigraphy: 181, 351
 Trinity Range, Pershing County: 227
 tritium: 68, 213
 Truckee, Calif. area: 177
 Truckee Meadows, Washoe County: 354, 377, 493, 512
 Truckee Range, Washoe County: 30, 457
 Truckee River, Calif.-Nev.: 51, 159, 175, 358, 582
 -basin/canyon/watershed: 25, 43, 307, 379, 582
 tuff *see* volcanic ash, tuff
 tungsten: 198, 352, 368, 454, 546, 547
 -alloys: 176
 -mines and mining - Calif.: 59, 215
 -mines and mining - Nev.: 158, 180, 215, 402, 541
 Tungsten Peak Mine Company: 59
 Tungsten (town), Pershing County: 368
 turbidity: 29
 Turkey: 394
 Tyko district, Nye County: 162
- ultramafic rocks: 450
 underground nuclear explosions: 68, 213, 568
 see also nuclear explosions
 underground water: 6, 11, 12, 16, 23, 25, 42, 48, 56, 60, 64, 94, 113, 139, 141, 152, 161, 169, 178, 195, 207, 229, 232, 251, 279, 287, 289, 293, 296, 297, 311, 314, 323, 354, 337, 346, 358, 369, 392, 422, 460, 487, 495, 509, 526, 539, 542, 563
 see also water; groundwater; springs
 Union district, Nye County: 3
 Upper Meadow Valley Wash, Clark County: 152
 uranium: 24, 30, 44, 58, 179, 241, 256, 350, 411, 502, 503
 urban growth/planning: 119, 157, 565
 urban runoff: 438
 Utah: 147, 196, 231, 247
- Vacaville Shale, Vacaville, Calif.: 66
 Vados zone: 154
 vanadium: 344, 463, 597
 vegetation - Nev.: 36, 314
- Vicee Canyon: 169
 Virgin River basin, Arizona: 553
 Virginia City: 297
 Virginia Mountains, Washoe County: 58, 414
 Virginia Range: 102
 volcanic ash, tuff: 93, 230, 241, 256, 367, 429, 436, 460, 525, 575
 volcanic soils: 155
 volcanoes/volcanism/volcanology: 214, 233, 263, 506
- Walker Canyon, Mono County, Calif.: 97
 Walker Lane, Mineral County: 45, 564
 Walker Lake, Mineral County: 382, 527
 Walker River: 397
 Walley's Hot Springs: 334
 Warm Springs Valley, Washoe County: 193
 Washington: 264, 506, 587
 Washington district, Lyon County: 411
 Washington Hill, Storey County: 298
 Washoe County
 -geology: 30, 40, 51, 58, 74, 95, 107, 136, 141, 143, 179, 186, 194, 249, 256, 290, 295, 307, 342, 375, 377, 414, 453, 457, 493, 502, 512, 521, 530, 544, 561, 562, 565, 567, 574
 -mineral resources: 43, 95, 256, 423, 426, 567
 -soil: 354, 512
 -water supply: 23, 74, 116, 124, 193, 207, 570
 waste disposal: 225, 399
 -in ground: 293
 see also radioactive waste disposal
 wastewater *see* water - wastewater
 water
 -analysis/chemistry: 175, 495, 569
 -consumption: 74
 -ground *see* groundwater
 -pollutants/pollution: 275, 287, 288, 416, 422, 479, 596
 -purification: 257, 399
 -quality: 26, 160, 163, 358, 438, 524, 556
 -resources/supply: 11, 35, 89, 99, 193, 203, 218, 296, 311, 369, 397, 495, 569, 601
 -surface *see* surface water; runoff; streamflow
 -table: 113
 -underground: *see* underground water
 -wastewater: 84, 501
 watersheds: 378
 -Nevada: 26, 36, 42, 160, 469, 569
 weathering: 300
 Wedekind district, Washoe County: 249
 Weepah district, Esmeralda County: 523
 wells: 67
 Westgate district, Churchill County: 62
 White Mountains, Calif.-Nev.: 126
 White Pine County
 -geology: 105, 134, 206, 223, 273, 454, 472, 533, 536
 -mining: 171, 222, 387

White Pine district, White Pine County: 273, 454
White River: 289
Wild Horse Canyon, Washoe County: 136
Wildcat Peak Formation: 313
Willard district, Pershing County: 390
wind(s): 151
 -power: 435
Winnemucca, Humboldt County: 79, 184, 218, 311
Wyoming - geology: 258

xanthates: 149, 282
x-ray fluorescent method: 96

Yosemite-Emigrant wilderness: 308
Yosemite National Park, Calif: 57
yttrium: 384
Yuba County, Calif.: 430
Yucatan, Mexico: 16
Yucca Mountain: 15, 71, 85, 93, 106, 140, 238, 260,
 287, 294, 314, 317, 323, 436, 490

zeolites: 24
zeta potential: 91
zinc: 118, 123, 135, 529
zone of aeration: 479

The Nevada Bureau of Mines and Geology (NBMG) is part of the Mackay School of Mines at the University of Nevada, Reno and is the state geological survey. NBMG scientists conduct research and publish reports on mineral resources and various aspects of general, environmental, and engineering geology.

Current activities in mineral resources and general geology include detailed geologic mapping and stratigraphic studies in Nevada, comparative studies of bulk mineable precious-metal deposits, geochemical investigations of mining districts, resource assessments, igneous petrologic studies, hydrothermal experiments, research on the origin of hydrothermal platinum-group-element occurrences, and examination of the origin and distribution of borate deposits in Nevada.

Environmental, engineering, and urban geology projects include investigations of earthquake hazards and related aspects of neotectonics, examination of issues involved in siting nuclear and hazardous wastes, mapping of geomorphic features, radon hazard studies, studies of landslide hazards, and investigation of land subsidence in Las Vegas Valley.

Geologic information activities include creating and updating databases on mining districts, active mines and prospects, and geothermal and petroleum exploration and production; implementation and development of statewide geographic information systems; and maintenance of core and cuttings facilities, rock and mineral collections for research, aerial photographic imagery and maps, and extensive files on Nevada geology and resources.

NBMG cooperates with numerous state and federal agencies in providing geologic and resource information and in conducting research. Research results are published as NBMG bulletins, reports, maps, and special publications as well as in federal publications and scientific journals. In addition to addressing the needs for geologic information by conducting research, publishing reports and maps, and creating computer databases, staff members assist the public, industry, and government agencies by answering specific questions regarding Nevada geology and resources and by providing some chemical and mineralogical analyses.

Individuals interested in Nevada geology are encouraged to visit or write NBMG or call (702) 784-6691. NBMG offices are located in the west wing of the Scrugham Engineering-Mines Building on the University of Nevada, Reno campus. When visiting NBMG by car please stop at the information booth just inside the Center Street entrance on the south end of the campus. The attendant will issue you a temporary parking permit and give you directions to parking areas and the NBMG offices. Address mail to: Director/State Geologist, Nevada Bureau of Mines and Geology/178, University of Nevada, Reno, NV 89557-0088. Our fax number is (702) 784-1709. A publication list will be sent upon request.