

29-m97
11:16-1

NEVADA STATE MUSEUM NEWSLETTER

Including News of Nevada Historical Society
Nevada State Railroad Museum • Nevada State Museum & Historical Society • Lost City Museum

VOLUME XVI

JANUARY 1988

Nevada State Library NUMBER 1

JAN 05 1988

Documents Section

NHS Mid-Winter Gala

'Music in Nevada, 1860-1920'

In the early days of Anglo-American settlement in Nevada, music was a scarce and valuable commodity. It came packed in the prospector's bedroll, in the provision boxes of the emigrant train, between the pages of the preacher's Bible, in the first class carriage of the Central Pacific Railroad — any means that brought people to Nevada. Music had to be created on the spot, at that time, in those circumstances. Even mechanical reproduction of music was a rarity. You made music yourself, or you made the effort, the grand social gesture, of going to where it was being made for you. Talent was sought out, and appreciated, and supported.

Music in Nevada, 1860-1920 will open in the Changing Gallery of the Nevada Historical Society Museum in Reno with the seventh annual Mid-Winter Gala on Friday evening, January 15, from six to 8 o'clock. With this exhibition we will re-discover the music early Nevadans enjoyed and explore the ways they made the music. Four public concerts in the Changing Gallery during the six-month run of the show will give us a taste of what our ancestors listened to. In February Joyce Cox Williams, soprano, and Ron Williams, piano, will present popular tunes enjoyed in the home. The Great Basin Brass Quintet will recreate the marches, airs and waltzes of the bands of the time in March. In April come Joyce and Ron Williams again, this time with violinist Won-Bin Yim, to present the music heard on the stage at Piper's and McKissick's opera houses in Virginia City and Reno. The grand finale will be a gala outdoor fete in the Victorian manner on a Sunday afternoon in May, presented by the St. John's Community Orchestra.

On each occasion the program will be composed of pieces popular in the 1860-1920 period and known to have been performed in Nevada. A particular treat will be the performance of music written and published in Nevada. Dr. Ron Williams of the Department of Music at UNR is serving as guest curator for the exhibition and concert series. The project is funded in part by a grant

from the Nevada State Council on the Arts, a state agency, and the National Endowment for the Arts, a federal agency. Watch for the announcement of the concert dates, and be sure to join us on January 15 for the Mid-Winter Gala.—Peter Bandurraga, Director, NHS

Lost City Museum Readies Indian Crafts Celebration

The Lost City Museum at Overton will hold its Second Annual Indian Crafts Month Celebration during February. An exhibit of Indian Art will be on display throughout the month, containing fine art, leather and woodwork.

The main celebration will run from the 13th through the 21st with Native American dancers, food and craft booths and demonstrations.

CORRECTION: 300 Butterfly Subspecies Abound in Nevada

In the last *NSM Newsletter* (November 1987), there was an article on Nevada's butterflies and I would like to correct a major error. The article stated that there are approximately 300 species of butterflies in Nevada. Actually, there are at least 190 species of butterflies known to occur in Nevada; the 300 number more properly refers to the number of butterfly subspecies.

One may wonder why a precise number is not given in statistics such as these. In this situation, science is not certain that all known (i.e. previously described) species or subspecies have been located yet; additionally, it is expected that species and/or subspecies not yet known to science will be discovered within the geographical limits of Nevada.—Gloria Harjes, *NSM Lepidopterist*

Pasmore Tea Service

Used in 'Bonanza, 2nd Generation'

By **ROBERT A. NYLEN**
Acquisition Registrar, Nevada State Museum

This fall, Gaylord Productions filmed a made-for-television movie, "Bonanza, The Second Generation," at the Ponderosa Ranch in Incline Village. The setting for this sequel to the popular TV series, which features an all new cast, is 1905.

At the request of the Department of Economic Development, the Nevada State Museum and Nevada Historical Society provided artifacts for use by the production company. Included were a bank scale and historic photographs. An important interior scene required tea service and silverware of a quality appropriate for the wealthy Cartwright family.

The Pasmore Tea Service and silverware from the collection of the museum, and augmented by pieces from the collection of museum docent Dorthie Thill, was shown to the set designer, who agreed they would be perfect for the table setting.

Presented to the museum by Marjorie M. Jones in 1976, the Pasmore accession is comprised of seven silver pieces including four pitchers, two bowls and one serving tray. Her grandfather, Edward James Pasmore, received this set from the teachers of Storey County in 1878 in recognition of his service as superintendent of county schools.

E. J. Pasmore was born in London, England, May 13, 1840. His father served as judge of the chancery in London. Pasmore's mother was considered one of the best contralto singers of that time period. It was from her side of the family that he acquired his love for music. Due to his musical talent, young Pasmore took lessons under many masters of his day. He studied the piano under Sir William Sterndale Bennett in London, and singing under the famous Guisepppe Concone of Turin, Italy.

When he graduated from school he chose the British Army for a career. The newly commissioned lieutenant would be stationed five years in Ireland. His military career came to an end when a family illness forced him to resign.

The reports of great wealth in British Columbia inspired Pasmore and two cousins to immigrate. The party arrived at Victoria in 1862, after an ocean voyage of three months that took them around Cape Horn. Pasmore and his two cousins were eager to start their project of farming on a large scale, having brought with them portable iron houses, agricultural implements and appliances of all kinds. The three young farmers quickly learned that agricultural methods of the old world would not work on the virgin lands of the new world. The venture which had started with such hope, collapsed and a fortune of \$250,000 was lost.



One of the pitchers from the Pasmore Tea Service used in the TV production "Bonanza, The Second Generation."

Young E. J. Pasmore moved on to San Francisco. It was here that he found his vocation as a professor of music. His music talent and teaching ability was immediately recognized; he became popular and much sought after by many churches, choral clubs, private schools, and colleges, eager to secure the benefits of his training.

In 1868, Pasmore arrived in Virginia City, where he taught music in the county's public schools. He also served as organist for St. Paul's Church and director of the choral society.

During his years on the Comstock he invested heavily in Nevada mining stocks. He later admitted to have lost an inheritance of some \$90,000 in these mining ventures.

While on the Comstock Professor Pasmore traveled home to England, and spent several months at the famous conservatory of music at Stuttgart, Germany.

In 1876 the Professor sought the elective position of Storey County Superintendent of Schools. On November

7, 1876, the *Territorial Enterprise* in an endorsement of his candidacy would state, "Professor Pasmore aspires to the position of Superintendent of our public schools. he has been upon the Comstock for eight years. He is known through his business to almost every man, woman, and child in the city. he is a gentleman of splendid attainments, and, having a house full of children of his own, he is in all respects fitted to know if teachers are doing their duties, and how to remedy errors. He has that fine organization which always attends to genius for music, which fits him to notice a thousand minor details of the schools which might not be observed by a less sensitive man. Vote for Professor Pasmore."

E. J. Pasmore won the election and served for one term. When his term expired in December, 1878, a delegation of Storey County teachers presented the retiring superintendent with the beautiful silver tea service utilized by Gaylord Productions. It was manufactured by the Meriden B. Company and purchased at the jewelry store of William Manning of Virginia City. The largest pitcher of the set bears the inscription: *Teachers of Storey County to E. J. Pasmore, Superintendent, 1878.*

Included with the silver was a framed testimonial beautifully written letter by Professor Metcalf, which read:

Testimonial: To E.J. Pasmore, Superintendent of Public Schools, Storey County, Nevada, Respected Sir, For the past two years we have had mutual aims — associated interests.

In your official capacity, we feel assured you have discharged your duties conscientiously and creditably.

In all your relations with us, you have been uniformly courteous and obliging.

Your success in life we shall ever regard with pleasure and pride.

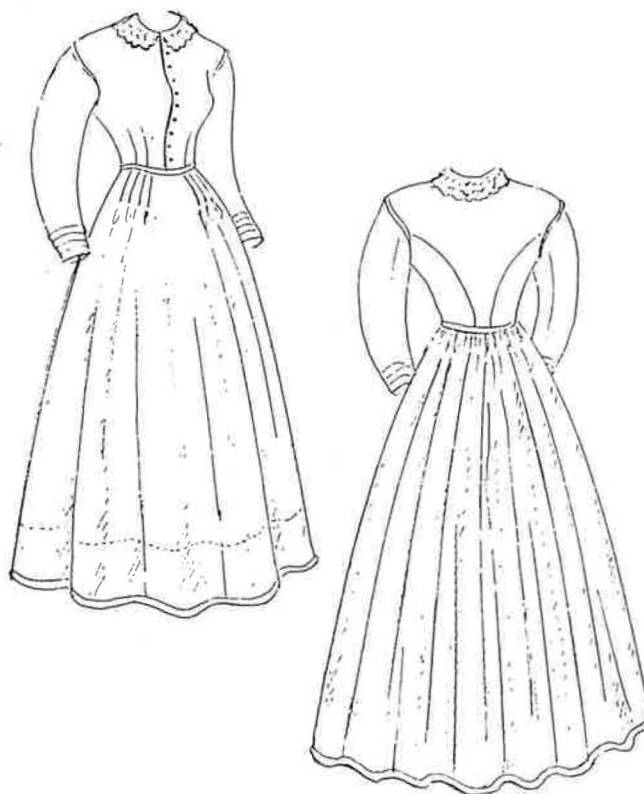
Please accept our slight testimonial, accompanied by the wish that it may ever adorn a happy home and suggest pleasant memories.

*Storey County Teachers
December 18, 1878.*

After leaving Virginia City in 1879, Professor Pasmore settled in Denver where he served as director of the Denver Opera Club. His musical talent was put to the test when he had to produce in successive weeks three operettas, "The Pirates of Penzance," "The Mascotte" and "Pinafore." Pasmore was forced to leave Denver due to poor health. He settled first in Cheyenne, Wyoming, where he remained for ten years, and then moved to Boise, Idaho. Professor Pasmore finally came to Butte, Montana, and in 1898 was appointed Professor of Music at State Normal College.

Professor E. J. Pasmore passed away on August 26, 1904.

The Pasmore Silver Service will be on display at the Nevada Historical Society for their show on music in Nevada. The television movie, "Bonanza, The Second Generation," will be shown some time early in 1988.



'Dress Review' Features Mid-1800's Day Dress

This dress is a lovely day dress dating from the late 1850's or early 1860's. It is made of a brown silk taffeta with a lace collar. The bodice is fitted, the shoulder seams are slightly dropped and the skirt is full with most of the fullness focused at the back. This fullness is not gathered but rather is a series of very small tight pleats, known as cartridge pleating.

The interesting aspect of this dress is that it holds a secret. Upon close examination, some writing was found on the underside of the skirt near the center front hemline. The words state: "A gift for my children and no one shall open or inspect it but my children. H.B. Stilwell." Unfortunately when this dress was donated the donor was unaware of these words and so was unable to pass on the story behind them. I can't help but wonder if there is something sewn into the garment itself or if maybe the lining fabric was used to wrap a package. Of course there is a temptation to unpick the hem, but to do so, the integrity and authenticity of the dress would be lost. And so the dress remains intact with a secret which we will probably never know. — *Jan Loverin, NSM Assistant Registrar. Sketch drawn by Dorothy Paulsen*

Railroad Museum Closes for Winter

The final weekend of the 1987 season at the Nevada State Railroad Museum saw large crowds for a water tank dedication and two operating steam locomotives. Some 146 people also attended the Annual V&T Symposium and Dinner held this year in Minden, Nevada at the Carson Valley Inn. As usual, all programs were well presented and enjoyed by everyone.

On Saturday, Oct. 31, the museum water tank was officially dedicated. Governor Richard Bryan spoke on the progress of the museum and the related community support, so essential in this type of program, thanking the individuals and businesses which donated much of their time and materials to the project. These folks then joined the Governor for a ride in restored Virginia & Truckee coach No. 4 (Kimball 1872), pulled behind Virginia & Truckee locomotive No. 22, the *Inyo* (Baldwin 1875) on the loop around the museum grounds.

The numbers are in for the season and 1987 was the best year ever for the Railroad Museum with 20,052 people stopping by to see the museum during the 72-day season. Of these, 6,959 rode the motor car and 6,399 rode the steam train. The *Friends of the V&T Museum* are to be praised for their fine contributions as a group, providing

operating volunteers, tour guides, ticket agents and gift counter attendants who contributed a total of 2,833½ volunteer hours. Eleven of these volunteers are to be recognized for contributing 100 hours or more during the season. They are: Chris deWitt, George Epley, Jack Gibson, Loren Jahn, Verne Horton, Laura Horton, Lee Hobold, Harry Laws, Art Koerber, Bob Thill, and Terry Ward. Thanks to everyone who participated in the program this year and we look forward to working with you again next year.

Construction of the Railroad Museum's long-awaited and much-needed Interpretive Center has begun. On Nov. 16, under cold winter skies, Shaw Construction cranes were on the site cautiously setting roof joists and timbers in place. Work on the structure is expected to be completed in time for 1988's NSRM Memorial Day opening.—*Contributed by the Staff of NSRM*

Daun Bohall photo illustrates the setting of roof trusses on the new Interpretive Center at the Nevada State Railroad Museum on Oct. 16, 1987.



Friends of the V&T Railroad Start 'History Happens' Project

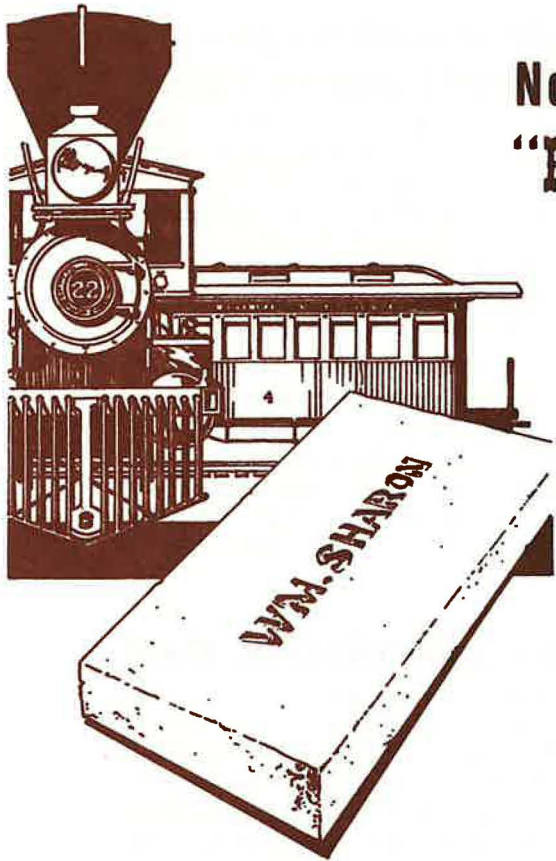
Friends of the Virginia & Truckee Railroad Museum have started a project with the donor's name and/or message engraved on a red paving brick. The bricks will be laid at the Nevada State Railroad Museum on the various walkways, with the first area being the walk between the parking facilities and the new Interpretive Center.

Each brick is a \$45 donation and allows one or two lines of 20 characters per line. A certificate is issued for each brick, and the latter will be placed in position prior to opening of the facility on Memorial Day weekend. The donations are deductible to those itemizing items.

An order form is enclosed in this issue of the *NSM Newsletter* and can be copied for multiple orders. Proceeds from this "History Happens" project will be used for expansion, operations, and other projects not funded by the state. Further information can be secured by writing to Friends of the V&T, P.O. Box 1330, Carson City, NV 89702.—*Jack Gibson, Friends of the V&T*

Nevada Humanities Sets Its Next Grant Deadline

The Nevada Humanities Committee is the state-based affiliate of the National Endowment for the Humanities. Its purpose is to increase public understanding and use of the humanities in Nevada. The Committee supports a wide variety of activities, awarding grants to non-profit organizations to carry out public humanities programs throughout the state. The next deadline for grant applications is Jan. 15, 1988. For information, please call 784-6587 in Reno and 798-0337 in Las Vegas.



Now, you too, can become a part of the "PLACE WHERE HISTORY HAPPENS"

You can participate in the "HISTORY HAPPENS PROJECT" for a donation of \$45, to be used toward the museum's expansion and continuing operation. Your name... or a loved one's... will be permanently engraved in a paving brick and set on the grounds of the Nevada State Railroad Museum's Carson City property. Each brick offers up to two lines of twenty letters each (including spacing and punctuation). Ample space for names, messages or whatever you wish to say to future visitors. You will be proud to display the numbered certificate you will receive acknowledging your contribution and restating your brick's inscription.

The "HISTORY HAPPENS PROJECT" is a joint venture of the Nevada State Railroad Museum and its support group, the "Friends of the Virginia and Truckee Railroad." All of the proceeds of the project will be used solely for the purposes of expanding and operating the facilities and exhibits of the Nevada State Railroad Museum in Carson City, Nevada.

The initial paving with the personalized bricks will be a walkway from the museum's parking area to the Interpretive Center. Future pavings may include additional walkways, outdoor interpretive areas and plazas.

Take advantage of this unique opportunity to show your pride and support of one of the nation's finest and fastest growing railroad museums. Your donation may be tax deductible* and will contribute greatly to assuring that history will continue to happen in Nevada!

*Status has been granted by IRS.

YES! PLEASE RESERVE A PLACE FOR ME WHERE "HISTORY HAPPENS"! I understand I will receive my own certificate of placement.

NAME _____ TELEPHONE (____) _____

ADDRESS _____

CITY, STATE, ZIP CODE _____

ENCLOSED IS MY CHECK FOR \$ _____ (\$45 EA.) FOR _____ PERSONALIZED BRICKS

CHARGE MY VISA MASTERCARD — CARD NUMBER _____

EXPIRATION DATE _____ SIGNATURE _____

PLEASE ENGRAVE BRICKS TO READ:
(EACH BRICK MAY HAVE 2 LINES OF 20 LETTERS EACH INCLUDING SPACES AND PUNCTUATION.)

Make checks payable to:
FRIENDS OF THE V&T
P.O. Box 1330
Carson City, NV 89702

(MESSAGE DISCRETION REQUIRED)

(FOR ADDITIONAL BRICKS USE SEPARATE SHEET)

Drawings at Membership Reception Bring Lunches, Dinners to Many

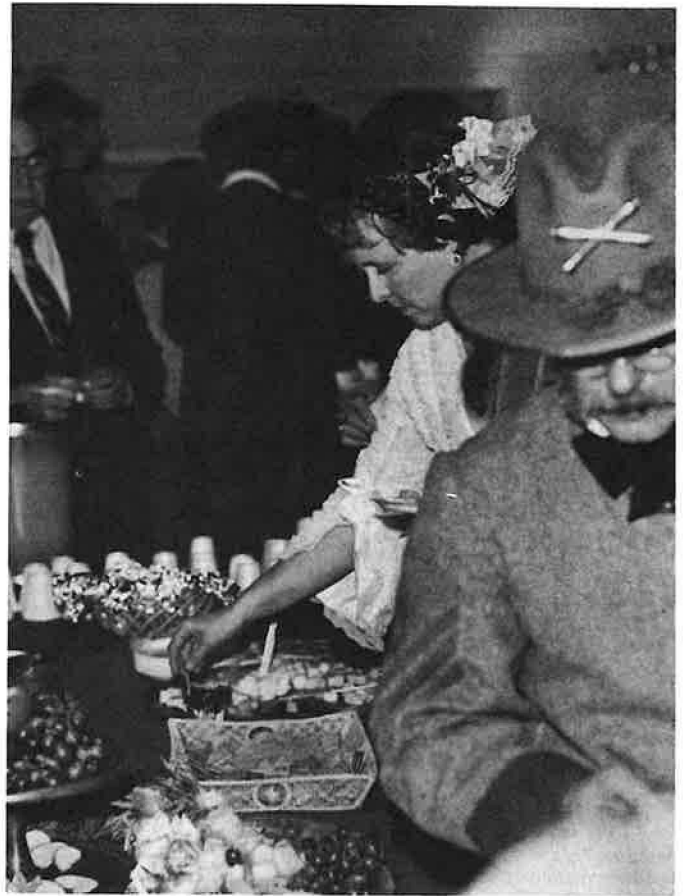
Special thanks to the Carson City Nugget, Sizzler Restaurant, Marrone's, Adele's, Micasa Too, Mia's Swiss Restaurant, Miramar House, El Charro Avitia, Mother Lode Hotel/Casino, Ormsby House Hotel/Casino, and Carson Valley Inn for generously donating lunches and dinners for two. Proceeds from the Dec. 2 membership reception drawing will go toward the construction of the museum's new Earth Science Gallery.

On hand that evening to preview aspects of the coming attraction were Exhibit Department staff and Dr. Jim Firby, NSM Geologist. Scenes depicting Pleistocene Nevada, drawn by Barbara Herlan, were on display as well as new seismograph equipment donated by Nevada Bell, and Paleozoic sea life forms molded and cast by Jim Huntington and Cindy Eastman of the Exhibit Department.

NSM Retrofit Nears Completion

Believe it or not, the end of the retrofit is in sight! After several months of upheaval, carpenters, electricians, plumbers, and painters are putting the final touches on the Nevada State Museum retrofit. The building now sports several sets of new double doors, and in some places there are walls where entrance ways used to be. Soon, peace and quiet will again prevail over these hallowed galleries!

Until retrofit is finished, the Museum is waiving its admission charge. We would like to take this opportunity to thank our members and friends for their patronage and to express our hope that your visits during retrofit have not been too unpleasant.



A sumptuous array of nibbling food was provided for guests at the Wine and Cheese Reception held at the Nevada State Museum on the evening of Dec. 2, as shown above. Entertainment was furnished by the Ross Price Band and the Civil War Volunteers and their ladies, shown below, doing the dances of a bygone era.—NSM staff photos by Scott Klette



Nevada Cultural Calendar for Jan.-Feb.

JANUARY

"The Ultimate Show Girl," 1/1-7/1, costume and photos of the first winner of the show girls' annual competition in Las Vegas, Depot Exhibit Hall, Clark County Museum, 455-7955.

Truckee Lions Sierra Sweepstakes Sled Dog Races, 1/2-3, Truckee-Tahoe Airport, 916-587-3276.

"American Country Christmas," thru 1/8, collection of quilts, toys, miniatures and dollhouses, Sierra Nevada Museum of Art, 329-3333.

"A Tribute to the Memory of Martin Luther King," 1/2-31, black artist show featuring Vickie Richardson, Sylvester Collier & Harold C. Bradford Jr., Main Gallery; thru 1/31, exhibit in oils, Melita Coombs, Nevada Gallery; 2/7-3/1, Mather's Show, Main Gallery; 2/7-3/1, Tim Gayhart, photography; Ruth Fife Elementary, Youth Gallery, Las Vegas Art Museum, 647-4300.

"Brewed in Nevada: History of the Silver State's Beer and Breweries," thru Spring 88, Nevada State Museum, 600 N. Carson, Carson City, 885-4810, 8:30-4:30 daily.

Missoula Children's Theatre, 1/4-9, Brewery Arts Center, Carson City, 883-1976.

"Venice 1966-1986," exhibit thru 1/4, restoration of buildings and art treasures of Venice, UNLV, Museum of Natural History, 739-3381.

Nevada Snow Sculpturing Championships, 12 teams carve 10-foot high blocks of snow, Hyatt Lake Tahoe, 831-1547.

Mexican Folk Retablos, 1/6-29, 19th century paintings of religious images on tin, Museum of Natural History UNLV, 739-3381.

Chitresh Das Dance Company, classical dance of India, Charleston Heights Art Center, 386-6383.

Diamond Peak Celebrity Ski Classic, 1/9-10, celebrities join in this event to celebrate the opening of the new Diamond Peak area at Ski Incline and to raise funds for handicapped athletes, Ski Incline, 832-1177.

"Silver in the Golden State," 1/9-4/19, a major exhibition of California silver decorative arts prepared by the Oakland Museum, State Capitol, Carson City. Silver items made with silver mined in Virginia City's Comstock Lode and the Sierra Gold Country. Preview showing 1/8, 6-8 pm, \$25 donation per person, by invitation only, 885-4810.

Sentimental Journey No. 10, 1/9-10, leaves Hazen on Sat. at 7:30 am aboard Amtrak for Sacramento's Old Town and Railroad Museum, return to Hazen Sun. 7:30 pm, Hazen Bar, Hazen, 867-3066.

Hidden Cave Tours, 1/9 and 1/23, meet at 9:30 am, County Museum, Fallon, 882-1631.

Black & White Gala, 1/15, Saks Fifth Ave. & Nevada Dance Theatre collaboration, fundraising gala with fashion show & dance, location TBA, 739-3838.

"Illusions in Clay, 1971-85," 1/15-2/14, Richard Shaw, contemporary clay; "Interior Landscapes," Antonia Lowden, textiles, 8 drawings, photorealism portfolio. 2/19-3/20, "Tracing the Line," Peter Goin, a photographic survey of the Mexican American border; Frank LaPena, paintings and monotypes; Elaine Jason, recent work, sculpture; Sierra Nevada Museum of Art, Reno, 329-3333.

"Nevada 87," touring photo exhibition produced by the Northeastern Nevada Museum, Elko. 1/15-28, White Pine Library, Courthouse Plaza, Ely; 2/2-17, Lincoln County Courthouse, Pioche.

Mid-Winter Gala, 1/15, 6-8 pm; "Music in Ne-

vada: 1860-1910," 1/15-7/5, Nevada Historical Society, Reno, 789-0190.

Pablo Casals Trio, 1/17, Charleston Heights Arts Center, 386-6383.

Season's Third Concert, 1/19, Reno Philharmonic Orchestra, Wagner's "Ride of the Walkyries," Bizet's "Symphony in C," and graphic portrayal of the adventures of "Don Quixote" by Richard Strauss, 8:15 pm, Pioneer Theater Auditorium, 825-5905.

"Faith Healer," 1/20-23, humorous play by Irish playwright Brian Friel, Actors Theatre of Louisville, 8 pm, Judy Bayley Theatre, UNLV, 739-3353.

"(W)Rites of Passage, Too," 1/22-24, 1/29-31, and 2/5-7, collection of poems, short stories and scenes written by Clark County school children, Rainbow Company Children's Theatre, Whipple Cultural Center, 386-6553.

"Alone Together," 1/22-23, 29-31, 2/4-6, a middle-aged couple whose children have finally left home are alone together, but not for long. All come charging home after some hard knocks in the real world. "Come Back to the Five and Dime Jimmy Dean, Jimmy Dean," 2/19-20, 25-27, 3/3-5; in a west Texas dime store, the disciples of James Dean gather for their 20th reunion. "Full of homespun humor," Reno Little Theater, 329-0661.

Reno Film Festival, 1/23-24, Reno Film critic Howard Rosenberg presents six major releases and one documentary, music and edibles, Old Town Mall, 831-1547.

Jean-Luc Ponty, Michael Schivo Presents, 1/23, Pioneer Theater Auditorium, 827-8273.

Elko High School Band Concert, 1/26, Convention Center, Elko, 738-4091.

Sentimental Journey No. 11, 1/27, board Amtrak in Hazen bound for Elko on Wed., 7:30 pm, return to Hazen Sun. 7:30 am, Hazen Bar, Hazen, 867-3066.

Cowboy Poetry Gathering, 1/28-30, cowboy poets, storytellers and balladeers from all over the West recite original works, documentary film, dances, Convention Center, Elko, 738-7508.

Mariachi Nuevo Uclatlan, 1/29, traditional Mexican music, Charleston Heights Art Center, 386-6383.

Helsinki University Chorus, 1/29, Little Flower Church, ticket info: 825-0533.

Wells Chariot Race International, 1/30-31, Roman style horse racing; chariot track, Wells, 752-3884.

Argenta Trio Concert, 1/30, classical music, Brewery Arts Center, Carson City, 883-1976.

"Swan Lake," 1/30-31, Nevada Festival Ballet, Pioneer Theater, 329-2552.

UNR Performing Artists, Michael Hedges, leading acoustic guitarist, 2/1, 8 pm, Pioneer Theater, 786-4046.

FEBRUARY

Indian Festival & Art Show, 2/1-29, art show and festival with dancers, food and crafts, Lost City Museum, Overton, 397-2193.

Mouton Rothschild Labels Exhibit, 2/2-11, paintings for the labels of Chateau Mouton Rothschild wines, Museum of Natural History, UNLV, 739-3381.

Repertory I, 2/4-7, mixed repertoire program featuring ballets "Los Ninos," "3 Greek Songs," "Peter and the Wolf," plus "Catfish Row," set to Gershwin's Porgy and Bess music, Nevada Dance Theatre, Judy Bayley Theatre, UNLV, 739-3838.

Avaz International Dance Theatre, 2/5, Charleston Heights Arts Center, 386-6383.

National Wildlife Magazine Photo Contest Exhibit, 2/6-3/6, Brewery Arts Center, Carson City, 883-1976.

Kate Hanlon Exhibit, 2/7, artist displays her weavings, Hazen Bar, Hazen, 867-3066.

Chinese New Year Celebration, 2/10-21, street parade, Chinese lion & dragon dances, Kung fu demo, fireworks, food, entertainment, sponsored by Harrah's, 788-3028.

Elko High School Winter Play, 2/11-12, Convention Center, Elko, 738-4091.

Sweetheart Ball, 2/12, dance to help raise money for Pahrump Community Medical Center, Community Center, Pahrump, 727-5107.

"A Thousand Clowns," 2/12-14 and 2/18-20, Herb Gardner's comedy, Clark County Community College Theater, North Las Vegas, 644-PLAY.

Starlight Waltz, 2/13, Valentine's Eve Sweethearts Ball, Peppermill Resort, Mesquite, 346-5232.

Mardi Gras, 2/13; cocktails, dinner, dancing, crowning of king and queen, costumes and prizes, Convention Center, Elko, 738-8493.

UNR Winter Carnival, 2/18, Lake Tahoe area, 784-6589.

Queen Ida and the Bon Temps Zydeco Band, 2/19, music from Cajun country, Reed Whipple Cultural Center, 386-6211.

Winter Concert, 2/12-13, premiering new modern dance works, Sierra Repertory Dance Theater, Reno Little Theater, 329-0661.

"Miss Julie," 2/12-13 and 2/19-21, drama, Nevada Repertory Company, Nell J. Redfield Studio Theater, UNR, 784-6505.

"Magic Flute," 2/12-13, Mozart's fairy tale opera. Nevada Opera Assn, Pioneer Theater, 786-4046.

Mardi Gras Party & Buffet, 2/16, live jazz, Carson Valley Inn, Minden, 782-9711.

"Rita Deanin Abbey Retrospective Exhibition," 2/16-3/5, Museum of Natural History, UNLV, 739-3381.

"Les Ballets Trackadero De Monte Carol," 2/17, all male ballet parodies, fundraiser for Nevada Festival Ballet, Pioneer Theater, 329-2552.

"Carson Capers," 2/19-20, annual community comedy review, Community Center, Carson City, 883-1976.

"The Trip to Bountiful," 2/19-20, 26-28, 3/3-5, Reno Little Theater, 329-0661.

L.A. Contemporary Dance Theatre, 2/21, combines elements of jazz, dance theatre, Africans and modern dance, Reed Whipple Cultural Center, 386-6211.

Musical Arts Singers, 2/21, Judy Bayley Theatre, UNLV, 739-3131.

Reno Philharmonic Concert, 2/23, 8:15 pm, James Winn & Cameron Grant appear as soloists for Mozart's "Concerto for 2 piano." Rachmaninoff's "Symphony No. 2" and the "Russian & Ludmilla Overture" by Glinka round out the program, Pioneer Theater, 825-5905.

Northeastern Nevada Honor Choir, 2/24-25, high school honor choir for Northeastern Nevada, Convention Center, Elko, 738-4091.

United States Navy Band in Concert, 2/25, UNR Nightengale Concert Hall, 8 pm, 784-6145.

"Passions Slave," 2/26-27, one man Shakespearean performance, Clark County Community

—Continued on page 7

15 Trainees in Sessions at NHS

Fifteen applicants have completed the first phase of their training to become docents. The eight weekly sessions have included time spent in the museum with experienced tour guides where they learned about the artifacts that are on display, for they too will become tour guides.

Each training session has also included a presentation by a well known Nevada historian or a person well versed in his field. Among the speakers have been Jim Hulse, Professor of History at the University of Nevada, Reno. He spoke on his memories of Pioche in the 1930's and 40's, a time that he lived there. Historian Lt. Col. William F. McConnell, U.S. Army Retired, gave an interesting and informative talk on which "Reno" Nevada's Reno is named after for there has been much confusion on the subject.

'Silver in the Golden State' Will Open Saturday, Jan. 9

"Silver in the Golden State" will open to the public on January 9 in the Assembly and Senate Chambers in the State Capitol Building. Admission to the showing will be \$2.00 per person.

On the evening of January 8, a private showing will be held at the Capitol Building followed by a reception at the Governor's Mansion. Admission is \$25.00 per person. Monies raised will go toward the restoration of the Senate and Assembly Chambers to a turn-of-the-century/Victorian appearance. For further information call the Museum at 885-4810. (See story in November 1987 NSM Newsletter.)

Next Newsletter Deadline

The next deadline for the *Nevada State Museum Newsletter* will be Friday, Feb. 5. Mailing will be made on Feb. 26. Please address all communications to Newsletter, Nevada State Museum, Capitol Complex, Carson City, NV 89710.

More February Calendar

College Theatre, North Las Vegas, 644-PLAY.

Indian Rug Sale, 2/26-28, modern Navajo weavings from Arizona, educational display of techniques, Hopi pottery, Sharkey's Casino, upstairs, sponsored by Central Democratic Committee of Douglas County, 265-2388.

Simba Dance Ensemble, 2/27, contemporary, jazz, ballet, Boulder City High School, 456-6695.

Florincanto Dance Theatre, 2/27, concert interprets folkloric traditions of old and modern Mexico, Reed Whipple Cultural Center, 386-6211.

"The Barber of Seville," 2/28, Rossini's comic opera, Nevada Opera Theatre, Ham Concert Hall, UNLV, 451-6331.

Dance Dept. Arts Concert, 2/28, McDermott Dance Studio, UNLV, 739-3827.

Concert, Reno Chamber Orchestra, 2/28, soloists Evelyn de la Rosa and Stephanie Freeman, Nightingale Concert Hall, UNR's Church Fine Arts Building, 784-6145.

Univ. of Utah Symphonic Band & Wind Ensemble, 2/29, 8 pm, UNR Nightingale Concert Hall, 784-6145.

John Townley, historian and author, discussed the discovery of the Comstock Lode at his appearance before the new docents. He titled his presentation "Does Anybody Know, Does Anybody Care?" Fred Horlacher, a Reed High School teacher, discussed teaching history in the public schools. Tom King, Director of the Oral History Project at UNR, told about how oral history projects are organized and the training necessary for those who work in such projects. Ed Kleiner, Biologist/Director of the arboretorium at the Wilbur May Museum, talked about the native plants being grown there.

With completion of the first phase of their training, the new docents are spending the following two months learning special skills in document research and photo classification among others.

The docent training class is composed of an interesting cross section of old and new Nevadans and they have diverse backgrounds and interests. Some are third generation Nevadans who love its history. Others are recent arrivals who have been docents, researchers or editors for other museums.

Current docents continue their work giving tours of the permanent gallery to student and other groups, researching documents, assisting the staff in mailings, manning the gift shop, and other projects.—*Lee Berk, NHS Docent Council*

Nevada Bell Donates Funds for Seismograph

Brian Herr of Nevada Bell has just made it official. His company will be adding their name to the Earth Science Gallery contributors. The company will be donating \$5,000 which will cover the purchase of the seismograph equipment. According to Doug Southerland, Director of Exhibits, the display will monitor earthquake activity along the Carson Valley and detect more distant events as well.

The Nevada State Museum Exhibit Department will design and construct a half circle to encase this instrument. The surface panel will serve as an area to mount text and graphics about earthquakes, calderas, and the Basin and Range structure of Nevada.

The Fundraising Department is actively soliciting sponsors for other components of the exhibit. Those interested in participating should contact Roger Bremner or Janine Sprout at 885-4810.

NSM NEWSLETTER

NEVADA STATE MUSEUM NEWSLETTER is published bimonthly the first of January, March, May, July, September, and November by the NSM-Carson City Docent Council. This issue edited by Jack Gibson. Mailing by Jan Buchanan. Please address all communications to Newsletter, Nevada State Museum, Capitol Complex, Carson City, NV 89710.

This Is Your Invitation To Join a State Museum

MEMBERSHIP LEVELS (With Benefits)

All memberships receive a 15% gift shop discount and the *Nevada State Museum Newsletter*.

- STUDENT (\$5.00)**
- SENIOR CITIZEN** (Without Quarterly) **(\$7.50)**
- REGULAR MEMBERSHIP (\$25.00)**
Historical Society Quarterly
- FAMILY (\$30.00)**
Historical Society Quarterly, and Christmas Ornament
- SUSTAINING (\$35.00)**
Historical Society Quarterly, Christmas Ornament, and Changing Gallery Poster/Catalog
- CONTRIBUTING (\$50.00)**
Historical Society Quarterly, Christmas Ornament, Changing Gallery Poster/Catalog, and Calendar
- ASSOCIATE FELLOW (\$100.00)**
Historical Society Quarterly, Christmas Ornament, Changing Gallery Poster/Catalog, Calendar, and Book (UNR Press title relating to Nevada)
- FELLOW (CORPORATE) (\$250.00)**
Historical Society Quarterly, Christmas Ornament, Changing Gallery Poster/Catalog, Calendar, Book (UNR Press title relating to Nevada), Wall Plaque, and *Newsletter* Advertisement
- ASSOCIATE PATRON (\$500.00)**
Historical Society Quarterly, Christmas Ornament, Changing Gallery Poster/Catalog, Calendar, Book (UNR Press title relating to Nevada), Wall Plaque, *Newsletter* Advertisement, and Annual Governor's Dinner
- PATRON (\$1,000.00)**
Receives all of the above benefits and has his/her name placed on an Honor Roll Plaque
- LIFE (\$2,500.00)**
Receives all of the above benefits (one time only/life time payment)

Name

Address

City

State, Zip

Clip and mail to: (with your check)

Nevada State Museum Capitol Complex Carson City, NV 89710	Nevada Historical Society 1650 N. Virginia St. Reno, NV 89503
Lost City Museum P.O. Box 807 Overton, NV 89040	Nevada State Railroad Museum Capitol Complex Carson City, NV 89710

Nevada State Museum & Historical Society
State Mail Complex
Las Vegas, NV 89158

or hand deliver to any of the above facilities.

OASIS Set to Open Feb. 10-12 in Vegas

The three day meeting of OASIS sponsored by the Department of Museums and History, the Nevada Humanities Committee, the Nevada State Council on the Arts, and the Division of Historic Preservation and Archeology will be held in Las Vegas at the Union Plaza Hotel on Feb. 10-12. The purpose of the conference is to demonstrate the importance of culture to the long-term development of Nevada.

Subjects to be explored include: conservation and museum management, Art in Public Places, programs for librarians and school teachers, historic preservation tactics, archeology and the law, advanced grants writing, marketing and public relations, and problems with unrelated business income.

By the time you read this, the OASIS conference registration forms should be reaching your doorstep. The forms include travel stipend information, a detailed schedule of events, Governor's Art Awards reservation form, and more.

Handling the 5,000 piece OASIS newsletter mailed in October were the dedicated docent staff of the Nevada State Museum. The addressing, stapling, bundling, and sorting took nine docents two days to complete. The docent staff of the Nevada Historical Society is tackling the mailing of the registration forms. The OASIS committee would like to extend its thanks for this monumental volunteer effort.

If our mailing somehow missed you, registration forms may be obtained by calling Janine Sprout at 885-4810.—
Janine Sprout, NSM

HELP!

Please help us keep our mailing list up to date by reporting any address change. Include an address label from the Newsletter.

Attach Address Label Here

New Address:

Name

Address

City

State, Zip

Mail to: Nevada State Museum
Capitol Complex, Carson City, NV 89710

If you are moving into an apartment, PLEASE INCLUDE THE APARTMENT NUMBER. Mail will NOT be delivered to an apartment complex unless the apartment number is included in the address.

Recent Acquisitions Listed

Recent acquisitions by facilities of the Department of Museums and History are reported as follows:

NEVADA STATE MUSEUM

Ruby Rodgers (donated in memory of **William Rodgers**), **Reno**—Many items found in Dayton, Austin, Silver City, LaPlata, Reno, Fort Churchill, and Carson City, totaling 17 items; phonograph records, sheet music, etc., totaling 50 items. **Museum Purchase**—50 phonograph albums issued by Victor, Victrola, Columbia, Brunswick, and National Music. **Mr. and Mrs. Byron F. Stetler, Carson City**—Browning 16 gauge shotgun and carrying case. **James Gilmore, Las Vegas**—Nevada Rodeo tie. **Joyce Swackhamer, Carson City**—Man's and woman's complete outfits for U.S. Bi-Centennial, 1976; 5 photographs of Joyce and William Swackhamer dressed by Bi-Centennial in costume, 1976. **Greg A. Taylor, Fernley**—Rifle, M-16A1 (Colt) restored. **A. R. Phillips, Studio City, CA**—Yellow Jacket Silver Mining Company stock certificate, July 18, 1883, for 100 shares; Yellow Jacket Mining Co. stock certificate, January 7, 1884; letter from J. M. Douglass to James Crawford, Supt. of U.S. Mint, dated July 5, 1884. **Commanding Officer of U.S.S. Nevada, SSBN-733, Capt. Stone**—U.S.S. Nevada SSBN-733 silent entry plaque; 8x10 color photo of U.S.S. Nevada; ball cap of U.S.S. Nevada.

NEVADA HISTORICAL SOCIETY

Charles Breese, Reno—Collection of 12 books and pamphlets on urban renewal, zoning, development and planning, wildlife and water for the Reno and Tahoe areas, 1960-1979. **Joseph and Marie Henslee, Reno**—Theodore Winter's check, 1891; receipt book, "Winters Rancho del Rio, Sacramento," 1880-1886. **Noreen Humphreys, Carson City**—Joanne de Longchamps, *One Creature, Poems and Collages* (signed by author). **Marie Henslee, Reno**—15 various issued from the 1930's of the *Sacramento Bee*, *Denver The Catholic Register*, *Portland Catholic Sentinel*, *Oroville Mercury*, *San Antonio La Presna*, *San Francisco Chronicle—This World*, *New York Times Magazine*, *New York Times Book Review*. **Southern Pacific Transportation Co., San Francisco, CA**—*Book Review*, Aug. 14, 1938. Historical Engineering records of the Central Pacific Railway and its predecessors. **Dorothy Ellen McCauley, Truckee, CA**—35mm b/w motion picture film, "W.B. Gelatt, Father of Winter Sports in California," c.1920. **Mr. and Mrs. Arthur Baber III, Reno**—Post card collection: (2) Placerville, CA; (1) Tehachapi Pass, CA; (5) Lake Tahoe; (1) Donner Lake; (1) Truckee, CA; (1) State Capitol, Sacramento, CA; (1) Napa, CA; (2) Colfax, CA; (1) San Francisco, CA; (1) Petaluma, CA; (1) unidentified; (1) card for Miss Ruby Lepper. **Archalee Correll, Reno**—Two-piece ivory day dress, c.1890. **Mr. and Mrs. R. H. Willits, Sparks**—5 baby dresses, c.1921; 3 baby caps, c. 1921; black beaded dress, c.1920.

NEVADA STATE MUSEUM AND HISTORICAL SOCIETY

Dorothy Wright, Las Vegas—7 historic postcards of the El Rancho Hotel and the Clark County courthouse. **Donato's Bookstore, Las Vegas**—1880 map of Utah and Nevada; 4 color posters of American circuses. **Mid-American Collectibles, Cedar Rapids, Iowa**—22 postcards of Nevada train depots. **Hand Tester, Channel 3 TV, Las Vegas**—Scripts of Ned Day's radio broadcasts from KROL radio, 1986-1987. **Abe Weinstein, Las Vegas**—20 rolls of 16mm film taken in Las Vegas in the early 1960s. **Robert Kling, Las Vegas**—Wagon jack of the 19th century found near Lund. **Myra Da Costa, Las Vegas**—1930s Underwood typewriter. **Ethel Johnson, Seattle, WA**—Altimeter used by early Las Vegas surveyor, J. T. McWilliams. **Stan Ervin, Las Vegas**—2 gears from a mine near Carlin, Nevada.

NEVADA STATE RAILROAD MUSEUM

Museum Purchase—Journal box lid lifter. **Daun Bohall, Carson City**—Four 8x10 b/w prints. **William E. Dial, Carson City**—Brass wall/bracket lamp, used in V&T station, Carson City. **Members of East Co., Los Angeles, CA**—Printed Japanese scarf, color blue, age new. **William E. McKim, Gardnerville**—18 assorted railroad rule books and engine operating instructions. **Tom Smith, East Babylon, NY**—Builders plate: "The J.G. Brill Co., Builder, Phila." **Ted and Betty Wurm, Oakland, CA**—87 photo negatives of equipment (locomotives, cars, gasoline railcars) covering period 1890-1972, originals and copies, filed in neg. envelopes with full data; 78 photo negatives of scenes along V&T including structures, from American Flat to Virginia City, 1910-1980, filed with data in envelopes; 13 photos, 120 size up to 8x10, majority are cars; set of 3 Bullfrog Goldfield RR forms, ca.1920; 7 copies Carson & Colorado 1882 timetable # 7 in yellow, (facsimiles).

Geraldine Gaertner, Carson City—V&T coupling pin "V&T RR." **William F. Fergus, Carson City**—Steamer trunk, "Denver Trunk Co." **Don Day, Medford, OR**—Brass plate "Passengers Not Allowed To Stand On The Platform." **Tom Fay, Carson City**—Official Guide of Railways, Oct. 1939. **Senator Don Mello, Sparks**—Santa Fe Rules and Regulations, Operating Dept., Nov. 1901; Southern Pacific Co. Rules and Regulations of Transportation Dept., effective Feb. 15, 1943; United States Railroad Admin., The Standard Code of Train Rules, July 1, 1916. **James H. Richardson, Reno**—Misc. collection of railroad items, newspaper clippings, S.P. Bulletins, Western Railroaders magazines, match covers, S.P. Co. baggageman hat badge, 1869-1950, commemorative pass on V&T for its final run, May 31, 1950, Sierra Railroad employees timetable 1939, misc. assortment of Railroad Magazines and spikes plus box of spikes found on the old C.P. right-of-way near Mirage. **Museum Purchase**—Brass HO gauge model of V&T caboose No. 10; "Mound House" station sign. **H. L. Scott, Leavenworth, WA**—Print of pen and ink sketch of caboose No. 24. **Linda Ryan, Carson City**—5 b/w photos of U.P. RR, given to her by the U.P.

Corporate Memberships

Corporate and life memberships in the Nevada State Museum are listed as follows:

LIFE MEMBERS

Mr. and Mrs. Hugh Roy Marshall
Reno

CORPORATE MEMBERS

Adele's Restaurant
Carson City

Michael Hohl Motor Co.
Carson City

Nevada First Thrift Bank
Offices Throughout Nevada

Ormsby House Hotel/Casino
Carson City

Porsche Cars North America, Inc.
Reno

GardenAmerica
Carson City

Sierra Pacific Power
Carson City

Southwest Gas Corp.
Carson City



Visitors at the Wine and Cheese Reception on Dec. 2 at the Nevada State Museum previewed an Earth Science display. Dr. Jim Firby, Geologist, at right, is explaining

parts of the display. See further stories on page 5 and page 7.—NSM staff photo by Scott Klette

Docent Council
NEVADA STATE MUSEUM
Capitol Complex
Carson City, Nevada 89710

NONPROFIT
ORGANIZATION
PAID
Carson City, Nv.
PERMIT NO. 32

to

Nevada State Library
Exchange Gift Division
Capitol Complex
Carson City, NV 89710