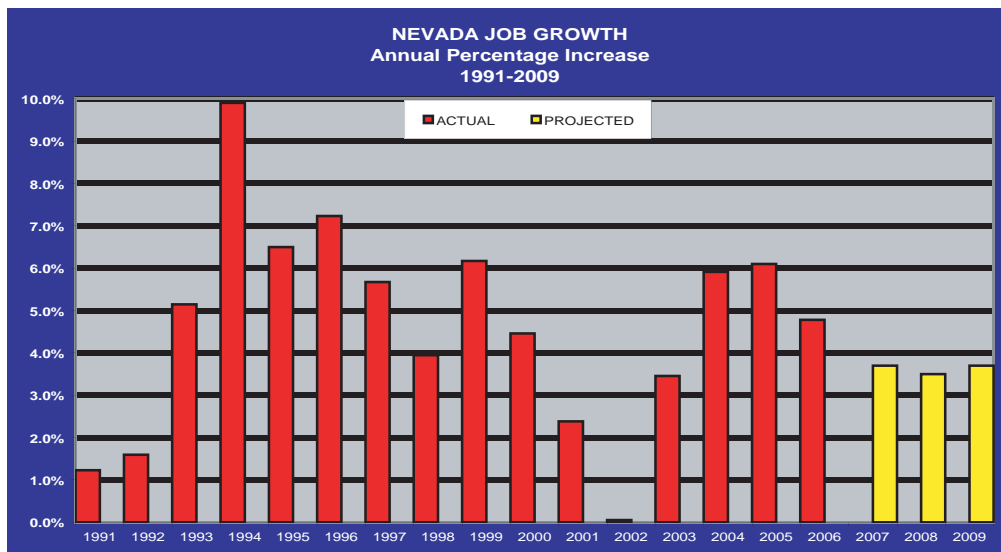


# Nevada Economy In Brief



## March 2007

Despite favorable weather in the northern part of the state for much of March, Nevada posted disappointing job growth. Employment in the state was 3.1 percent higher than in March 2006, the smallest year-over-year percentage increase since June 2003. While 9,300 jobs were added statewide over the month, the increase was well below the 11,500 average March job gains of the previous ten years. The construction industry contributed 1,400 new jobs during the



### Economic Indicators

#### UNEMPLOYMENT RATES MAR 2007

NEVADA (SA)*	4.3%
LAS VEGAS-PARADISE MSA	4.2%
RENO-SPARKS MSA	4.4%
CARSON CITY MSA	5.2%
ELKO MICROPOLITAN AREA	3.7%
UNITED STATES (SA)*	4.4%
CALIFORNIA (SA)*	4.8%

\*(SA) - Seasonally Adjusted

#### JOB GROWTH (LAST 12 MONTHS)

NEVADA	3.1%
LAS VEGAS-PARADISE MSA	3.3%
RENO-SPARKS MSA	2.8%
CARSON CITY MSA	1.2%
UNITED STATES	1.4%
CALIFORNIA	1.7%

#### CONSUMER PRICE INDEX (1yr %Chg)

UNITED STATES	2.8%
---------------	------

#### GROSS GAMING WIN (% CHANGE)

##### FEB 2006 - FEB 2007

NEVADA	2.9%
CLARK COUNTY	3.7%
WASHOE COUNTY	-4.6%

#### TAXABLE SALES (% CHANGE)

##### JAN 2006 - JAN 2007

NEVADA	0.9%
CLARK COUNTY	1.0%
WASHOE COUNTY	-0.9%

month, its worst March performance since 1999. Weakness in the economy since late last summer, triggered by the slowdown in new home construction, has led the Department to reduce its job growth forecast for 2007 from 5.0 percent to 3.7 percent, well below the 5.9 percent, 6.1 percent and 4.8 percent growth recorded from 2004 to 2006, respectively, but in line with the growth rate in 2003, just before the housing boom began.

Another measure of the relative weakness in the construction sector is the number of unemployment claims emanating from the industry. Claims for weekly unemployment benefits have been more than 30 percent—and sometimes as much as 50 percent—higher than a year ago for the past six months, and the number of claims has increased from approximately 3,700 to 6,100 since June. First quarter claims figures are the highest since the first quarter of 2003.

February gaming data provided some additional disappointment. Because the Chinese New Year fell in January 2006 and in February this year, a large increase in gross gaming win was expected. However, gaming revenues increased only 2.9 percent statewide and 4.3 percent on the Las Vegas Strip. The level of gaming activity was consistent with the modest 5.3 percent gain averaged over the past 12 months.

(Continued on Page 2...)

### In This Issue

Nevada Economy In Brief.....1&2  
Gaming Win, Taxable Sales, Hotel Rooms, Unemployment Claims.....2

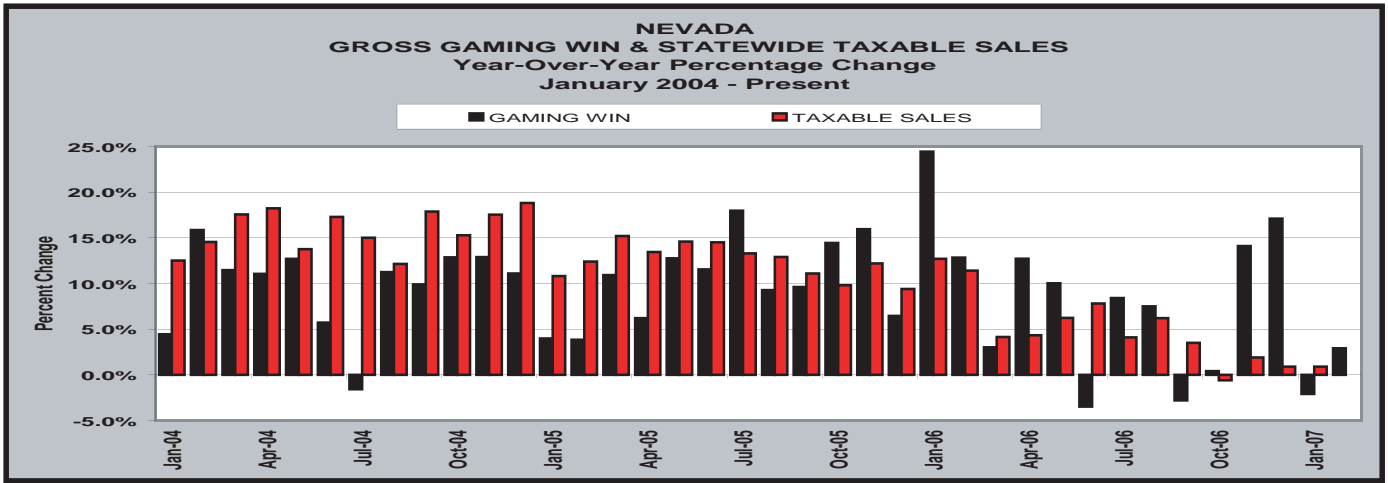
Employment/Unemployment Data Nevada Statewide.....3  
Las Vegas-Paradise MSA.....4  
Reno-Sparks MSA.....5  
Carson City MSA.....6  
Nevada County Summary.....7

Contact Information.....8

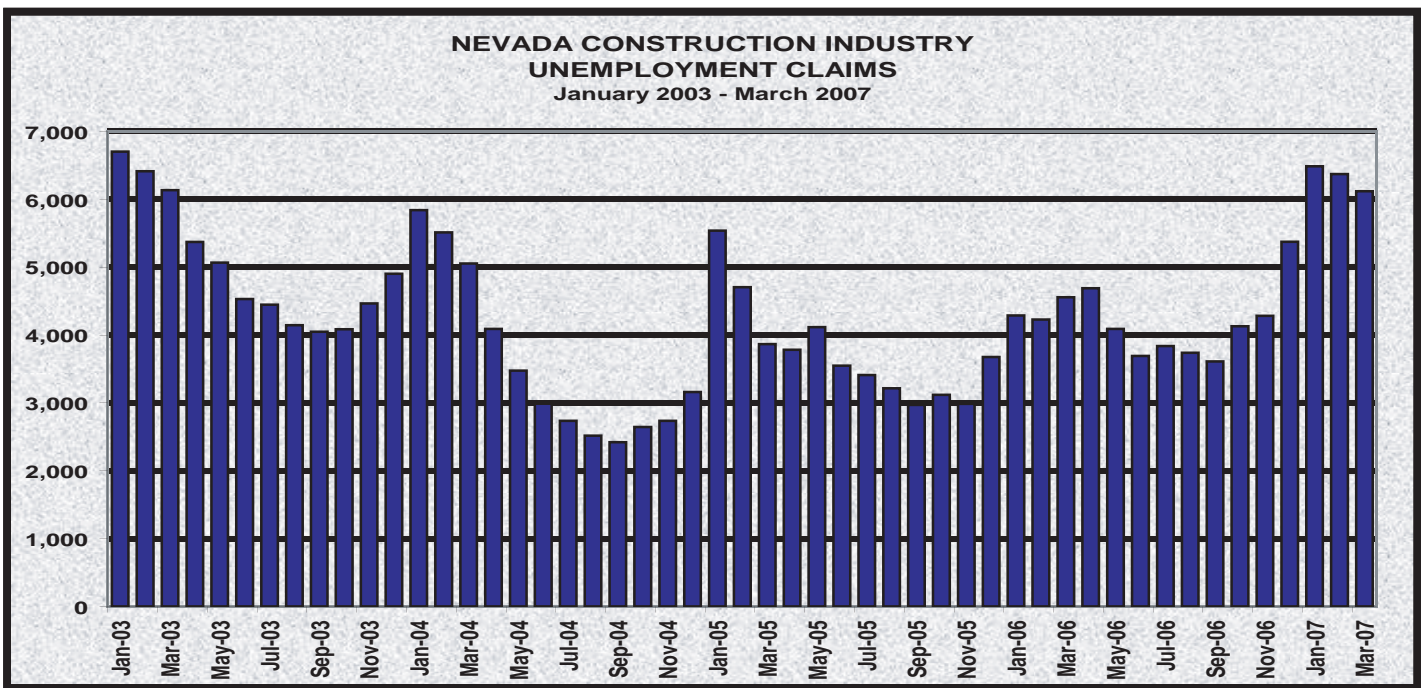
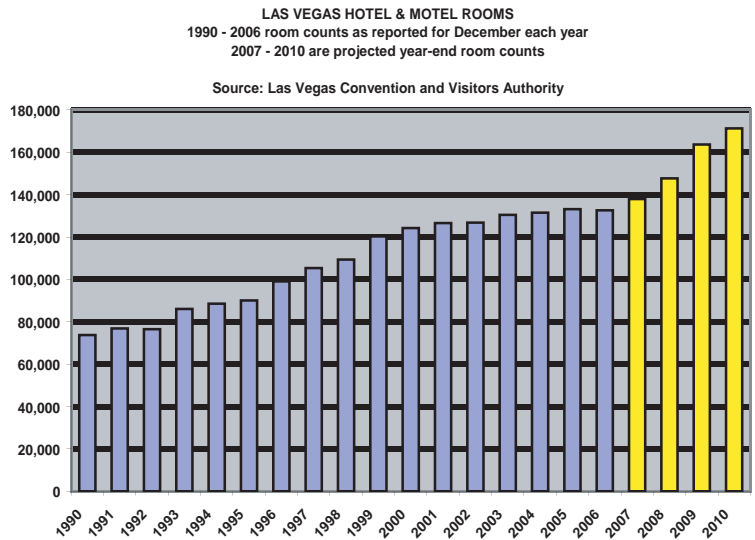
(Note: Data for April 2007 will be released on May 18, 2007)

...(Continued From Page 1)

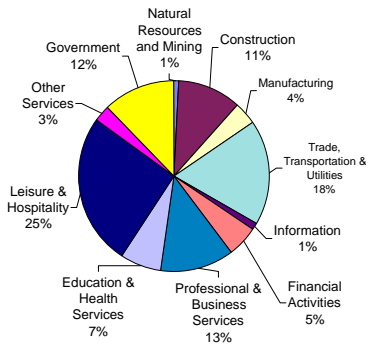
Coupled with tepid 0.9 percent growth in taxable sales in January, the revenue side of the state's budget, dominated by sales and gaming taxes, is under considerable pressure this year.



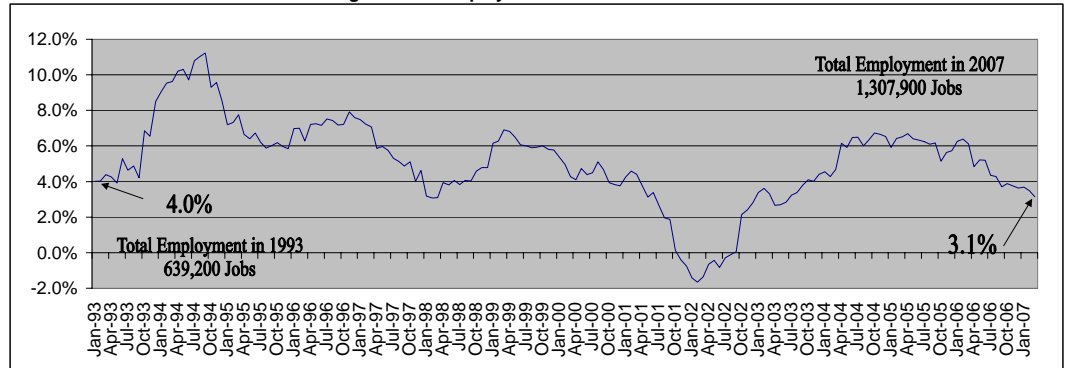
While recent economic data has fallen below Nevada's usual standards, it should be noted that the economy is near the low point of the current business cycle. Nevada has gained nearly 270,000 jobs since March 2002, a period that saw the construction of only one mega-resort in Las Vegas. With the Palazzo, Encore at Wynn Las Vegas, Project CityCenter, Echelon Place, Cosmopolitan and other projects taking shape, the Las Vegas Strip is seeing its first major resort construction cycle since the late 1990's. These projects will create tens of thousands of permanent jobs once they are completed. Those workers will need new homes, schools and places to shop. Growth of the southern Nevada economy has traditionally been sparked by resort construction, and the biggest construction cycle on record is under way. The lull created by the slowdown in the housing market is a natural response to the impressive growth recorded in the past five years.



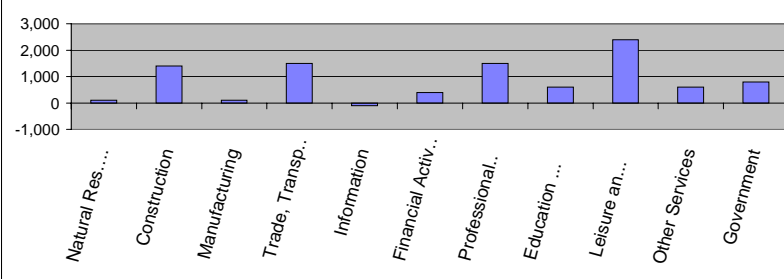
## Nevada Industry Composition



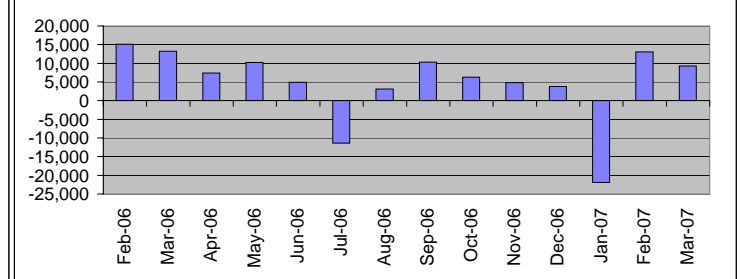
## Annual Job Growth Rate for Total NonAgricultural Employment



## Monthly Change by Industry



## Monthly Change In Total Non-Ag. Employment



## Nevada Employment By Industry

	MAR 2007	FEB 2007	MAR 2006	Monthly Change		Annual Change	
				Total	%	Total	%
<b>Total All Industries</b>	<b>1,307,900</b>	<b>1,298,600</b>	<b>1,268,000</b>	<b>9,300</b>	<b>0.7%</b>	<b>39,900</b>	<b>3.1%</b>
Natural Resources and Mining	12,100	12,000	11,100	100	0.8%	1,000	9.0%
Construction	140,600	139,200	141,900	1,400	1.0%	-1,300	-0.9%
Manufacturing	51,700	51,600	49,500	100	0.2%	2,200	4.4%
Trade, Transportation & Utilities	231,500	230,000	222,700	1,500	0.7%	8,800	4.0%
Wholesale	39,800	39,500	38,400	300	0.8%	1,400	3.6%
Retail	139,400	138,500	135,200	900	0.6%	4,200	3.1%
Trans, Warehousing and Utilities	52,300	52,000	49,100	300	0.6%	3,200	6.5%
Information	15,400	15,500	14,700	-100	-0.6%	700	4.8%
Financial Activities	66,600	66,200	64,800	400	0.6%	1,800	2.8%
Finance and Insurance	39,700	39,400	38,800	300	0.8%	900	2.3%
Professional & Business Services	164,600	163,100	156,900	1,500	0.9%	7,700	4.9%
Education & Health Services	90,600	90,000	86,800	600	0.7%	3,800	4.4%
Health Care and Social Assistance	83,500	83,100	80,200	400	0.5%	3,300	4.1%
Leisure & Hospitality	339,100	336,700	333,600	2,400	0.7%	5,500	1.6%
Casino Hotels and Gaming	214,000	213,400	215,800	600	0.3%	-1,800	-0.8%
Food Services and Drinking Places	95,500	94,200	89,800	1,300	1.4%	5,700	6.3%
Other Services	37,200	36,600	35,000	600	1.6%	2,200	6.3%
Government	158,500	157,700	151,000	800	0.5%	7,500	5.0%

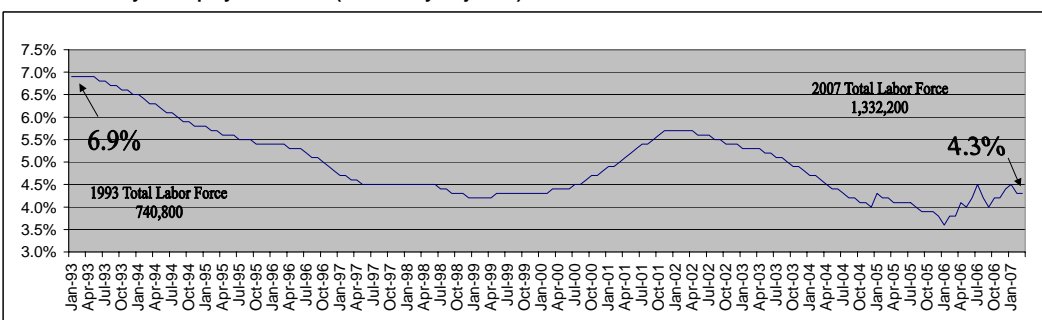
## Size Class of Industries - Sep 2006 (Non-Government Worksites)

Size Class	Employees Per Worksite	Number of Worksites	Employment in Size Class	% of Total Employment
9	1000+	105	227,457	20.0%
8	500-999	120	80,533	7.1%
7	250-499	265	92,130	8.1%
6	100-249	1,105	167,382	14.7%
5	50-99	2,036	140,986	12.4%
4	20-49	5,882	177,646	15.6%
3	10-19	8,583	116,443	10.2%
2	5-9	11,723	78,145	6.9%
1	0-4	28,909	57,076	5.0%
<b>Total</b>		<b>58,728</b>	<b>1,137,798</b>	<b>100.0%</b>

## Labor Force and Unemployment

	MAR 2007	FEB 2007	MAR 2006	Monthly Change		Annual Change	
				Total	%	Total	%
Total Labor Force	1,332,200	1,334,800	1,251,200	-2,600	-0.2%	81,000	6.5%
Unemployment	57,700	60,500	48,800	-2,800	-4.6%	8,900	18.2%
Unemployment Rate	4.3%	4.5%	3.9%	*	*	*	*
<b>Unemployment Rate (SA)</b>	<b>4.3%</b>	<b>4.3%</b>	<b>3.8%</b>	*	*	*	*
Total Employment	1,274,500	1,274,300	1,202,400	200	0.0%	72,100	6.0%

## Nevada Monthly Unemployment Rates (Seasonally Adjusted) 1993 to Current



## Nevada's Largest Private Employers - Sep 2006

Employer	Employees	Industry
BELLAGIO, LLC	9000-9499	Casino Hotels
WYNN LAS VEGAS, LLC	8500-8999	Casino Hotels
MGM GRAND HOTEL/CASINO	8500-8999	Casino Hotels
MANDALAY BAY RESORT AND CASINO	7500-7999	Casino Hotels
VENETIAN RESORTS LLC	5500-5999	Casino Hotels
CAESARS PALACE	5500-5999	Casino Hotels
MIRAGE CASINO-HOTEL	5500-5999	Casino Hotels
RIO SUITE HOTEL & CASINO	4000-4499	Casino Hotels
FLAMINGO HILTON	4000-4499	Casino Hotels
LUXOR	3500-3999	Casino Hotels
HARRAH'S LAS VEGAS	3500-3999	Casino Hotels
BALLY'S & PARIS CASINO HOTELS	3500-3999	Casino Hotels
TREASURE ISLAND AT THE MIRAGE	3500-3999	Casino Hotels
EXCALIBUR HOTEL & CASINO	3000-3499	Casino Hotels
CIRCUS CASINO INC.	3000-3499	Casino Hotels

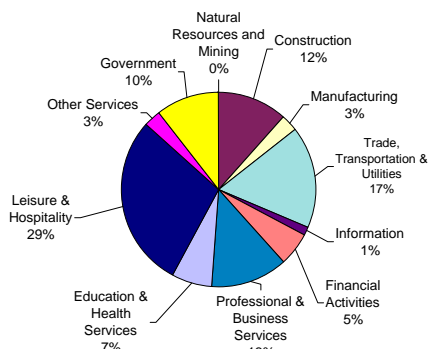
## 2006 Avg Wages By Industry-OES Survey Data

Industry	Avg. Hourly Wage
<b>Total All Industries</b>	<b>\$17.07</b>
Natural Resources and Mining	\$23.31
Construction	\$20.49
Manufacturing	\$18.26
Trade, Transportation & Utilities	\$15.74
Information	\$22.57
Financial Activities	\$19.72
Professional & Business Services	\$19.22
Education & Health Services	\$20.34
Leisure & Hospitality	\$11.77
Other Services	\$15.04
Government	\$23.83

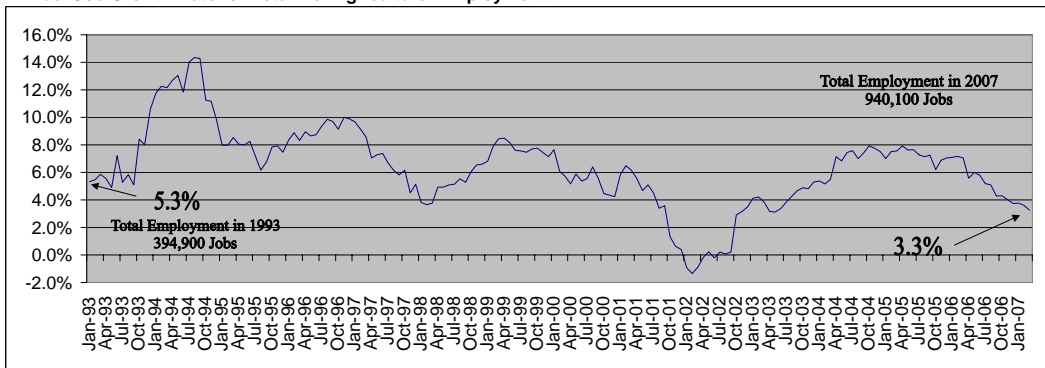
Employment data for current month is preliminary and previous month has been revised. All data subject to annual benchmark revisions.

Note: The statewide unemployment rate is seasonally adjusted

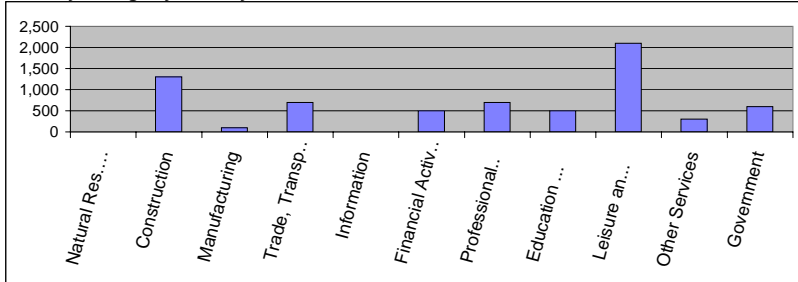
## Las Vegas-Paradise MSA Industry Composition



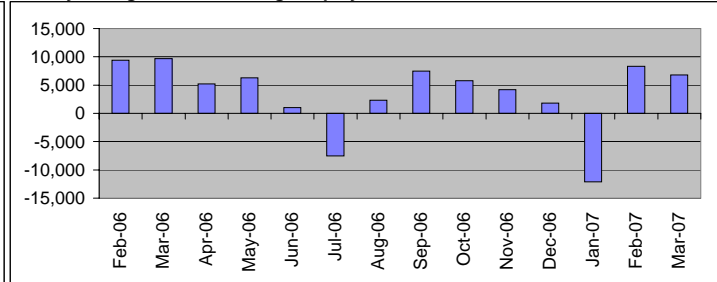
## Annual Job Growth Rate for Total NonAgricultural Employment



## Monthly Change by Industry



## Monthly Change In Total Non-Ag. Employment



## Las Vegas-Paradise MSA Employment By Industry

	MAR 2007	FEB 2007	MAR 2006	Monthly Change		Annual Change	
				Total	%	Total	%
<b>Total All Industries</b>	<b>940,100</b>	<b>933,300</b>	<b>910,500</b>	<b>6,800</b>	<b>0.7%</b>	<b>29,600</b>	<b>3.3%</b>
Natural Resources and Mining	400	400	400	0	0.0%	0	0.0%
Construction	108,300	107,000	108,900	1,300	1.2%	-600	-0.6%
Manufacturing	27,900	27,800	26,500	100	0.4%	1,400	5.3%
Trade, Transportation & Utilities	159,500	158,800	153,700	700	0.4%	5,800	3.8%
Wholesale	24,300	24,200	23,200	100	0.4%	1,100	4.7%
Retail	99,300	98,900	96,300	400	0.4%	3,000	3.1%
Trans, Warehousing and Utilities	35,900	35,700	34,200	200	0.6%	1,700	5.0%
Information	11,600	11,600	10,500	0	0.0%	1,100	10.5%
Financial Activities	51,600	51,100	49,600	500	1.0%	2,000	4.0%
Finance and Insurance	30,400	30,000	29,300	400	1.3%	1,100	3.8%
Professional & Business Services	121,300	120,600	115,100	700	0.6%	6,200	5.4%
Education & Health Services	62,300	61,800	59,800	500	0.8%	2,500	4.2%
Health Care and Social Assistance	57,400	57,000	55,000	400	0.7%	2,400	4.4%
Leisure & Hospitality	273,100	271,000	269,400	2,100	0.8%	3,700	1.4%
Casino Hotels and Gaming	176,000	175,500	177,700	500	0.3%	-1,700	-1.0%
Food Services and Drinking Places	74,700	73,700	70,500	1,000	1.4%	4,200	6.0%
Other Services	25,900	25,600	24,300	300	1.2%	1,600	6.6%
Government	98,200	97,600	92,300	600	0.6%	5,900	6.4%

## Size Class of Industries - Sep 2006 (Non-Government Worksites)

Size Class	Employees Per Worksite	Number of Worksites	Employment in Size Class	% of Total Employment
9	1000+	85	193,592	23.4%
8	500-999	93	62,840	7.6%
7	250-499	198	68,665	8.3%
6	100-249	799	121,536	14.7%
5	50-99	1,436	99,552	12.0%
4	20-49	4,001	121,529	14.7%
3	10-19	5,532	75,147	9.1%
2	5-9	7,517	50,304	6.1%
1	0-4	17,985	35,200	4.2%
<b>Total</b>		<b>37,646</b>	<b>828,365</b>	<b>100.0%</b>

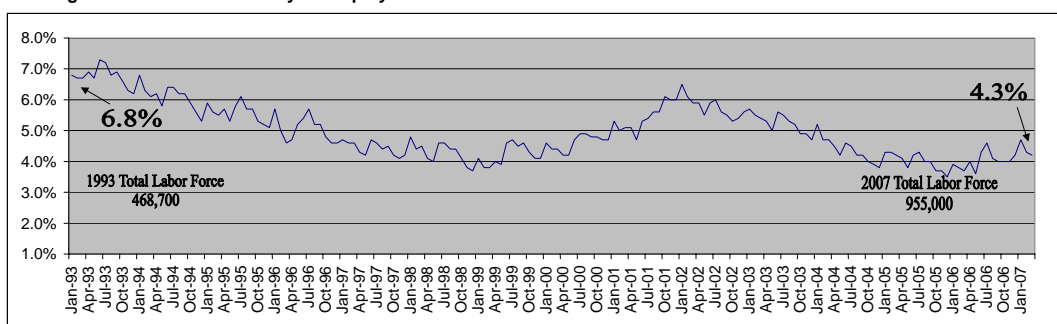
## Largest Private Employers - Sep 2006

Employer	Employees	Industry
BELLAGIO, LLC	9000-9499	Casino Hotels
WYNN LAS VEGAS, LLC	8500-8999	Casino Hotels
MGM GRAND HOTEL/CASINO	8500-8999	Casino Hotels
MANDALAY BAY RESORT AND CASINO	7500-7999	Casino Hotels
VENETIAN RESORTS LLC	5500-5999	Casino Hotels
CAESARS PALACE	5500-5999	Casino Hotels
MIRAGE CASINO-HOTEL	5500-5999	Casino Hotels
RIO SUITE HOTEL & CASINO	4000-4499	Casino Hotels
FLAMINGO HILTON	4000-4499	Casino Hotels
LUXOR	3500-3999	Casino Hotels
HARRAH'S LAS VEGAS	3500-3999	Casino Hotels
BALLY'S & PARIS CASINO HOTELS	3500-3999	Casino Hotels
TREASURE ISLAND AT THE MIRAGE	3500-3999	Casino Hotels
EXCALIBUR HOTEL & CASINO	3000-3499	Casino Hotels
CIRCUS CIRCUS CASINOS INC.	3000-3499	Casino Hotels

## Labor Force and Unemployment

	MAR 2007	FEB 2007	MAR 2006	Monthly Change		Annual Change	
				Total	%	Total	%
Total Labor Force	955,000	955,700	890,800	-700	7.2%	64,200	7.2%
Unemployment	40,000	41,300	33,000	-1,300	-3.1%	7,000	21.2%
<b>Unemployment Rate</b>	<b>4.2%</b>	<b>4.3%</b>	<b>3.7%</b>	*	*	*	*
Total Employment	915,000	914,400	857,800	600	0.1%	57,200	6.7%

## Las Vegas-Paradise MSA Monthly Unemployment Rates 1993 to Current



## 2006 Avg Wages By Industry-OES Survey Data

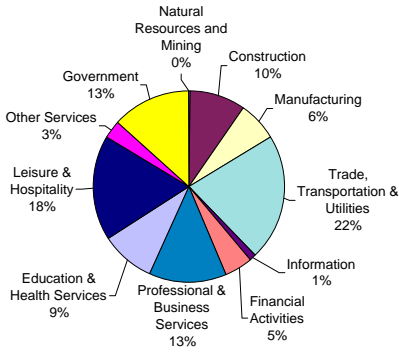
Industry	Avg. Hourly Wage
<b>Total All Industries</b>	<b>\$16.92</b>
Natural Resources and Mining	\$19.75
Construction	\$20.71
Manufacturing	\$17.89
Trade, Transportation & Utilities	\$15.46
Information	\$23.76
Financial Activities	\$19.75
Professional & Business Services	\$19.40
Education & Health Services	\$19.79
Leisure & Hospitality	\$12.11
Other Services	\$14.70
Government	\$24.63

Employment data for current month is preliminary and previous month has been revised. All data subject to annual benchmark revisions.

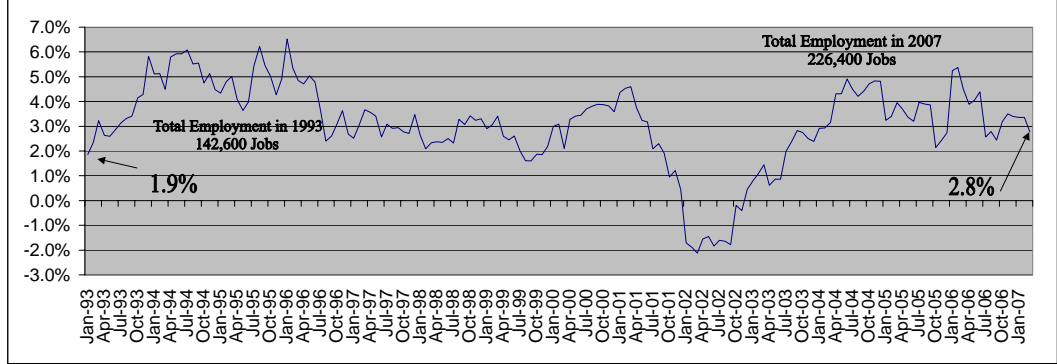
\*MSA = Metropolitan Statistical Area / Las Vegas-Paradise MSA = Clark County



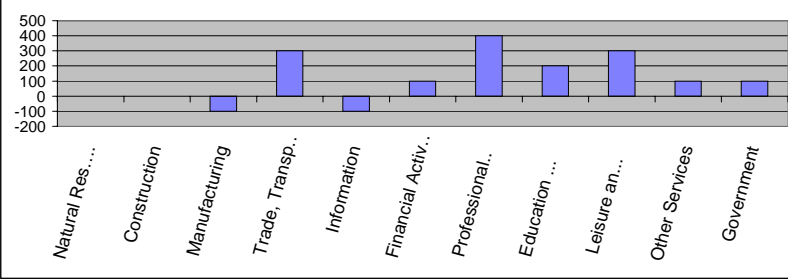
## Reno-Sparks MSA Industry Composition



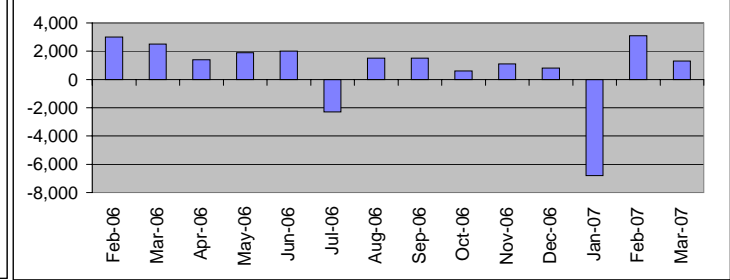
## Annual Job Growth Rate for Total NonAgricultural Employment



## Monthly Change by Industry



## Monthly Change In Total Non-Ag. Employment



## Reno-Sparks MSA Employment By Industry

	MAR 2007	FEB 2007	MAR 2006	Monthly Change		Annual Change	
				Total	%	Total	%
<b>Total All Industries</b>	<b>226,400</b>	<b>225,100</b>	<b>220,300</b>	<b>1,300</b>	<b>0.6%</b>	<b>6,100</b>	<b>2.8%</b>
Natural Resources and Mining	400	400	400	0	0.0%	0	0.0%
Construction	21,700	21,700	22,700	0	0.0%	-1,000	-4.4%
Manufacturing	14,700	14,800	14,200	-100	-0.7%	500	3.5%
Trade, Transportation & Utilities	48,500	48,200	46,600	300	0.6%	1,900	4.1%
Wholesale	11,100	11,100	10,900	0	0.0%	200	1.8%
Retail	25,100	24,800	24,100	300	1.2%	1,000	4.1%
Trans, Warehousing and Utilities	12,300	12,300	11,600	0	0.0%	700	6.0%
Information	2,700	2,800	2,800	-100	-3.6%	-100	-3.6%
Financial Activities	10,700	10,600	10,700	100	0.9%	0	0.0%
Finance and Insurance	6,600	6,600	6,700	0	0.0%	-100	-1.5%
Professional & Business Services	29,800	29,400	28,000	400	1.4%	1,800	6.4%
Education & Health Services	20,400	20,200	19,800	200	1.0%	600	3.0%
Leisure & Hospitality	40,200	39,900	38,700	300	0.8%	1,500	3.9%
Casino Hotels	18,900	18,900	19,000	0	0.0%	-100	-0.5%
Food Services and Drinking Places	13,900	13,700	12,500	200	1.5%	1,400	11.2%
Other Services	7,400	7,300	7,100	100	1.4%	300	4.2%
Government	29,900	29,800	29,300	100	0.3%	600	2.0%

## Size Class of Industries - Sep 2006 (Non-Government Worksites)

Size Class	Employees Per Worksite	Number of Worksites	Employment in Size Class	% of Total Employment
9	1000+	15	25,954	13.4%
8	500-999	14	8,731	4.5%
7	250-499	42	14,214	7.3%
6	100-249	200	29,971	15.5%
5	50-99	408	28,117	14.5%
4	20-49	1,167	35,168	18.1%
3	10-19	1,811	24,678	12.7%
2	5-9	2,324	15,327	7.9%
1	0-4	5,827	11,642	6.0%
<b>Total</b>		<b>11,808</b>	<b>193,802</b>	<b>100.0%</b>

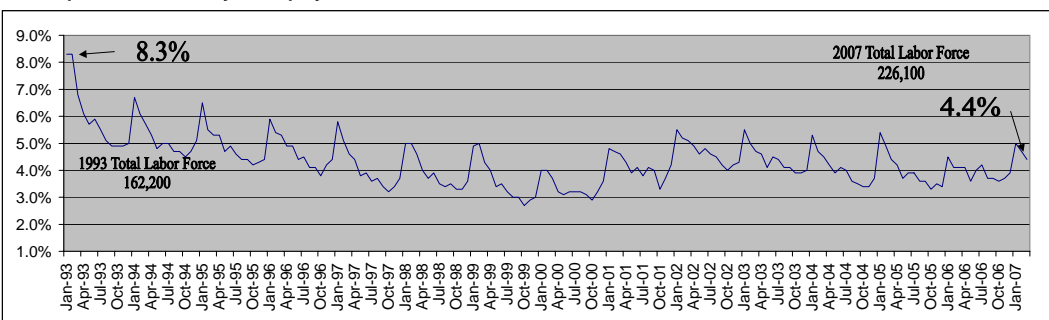
## Largest Private Employers - Sep 2006

Employer	Employees	Industry
INTERNATIONAL GAME TECHNOLOGY	2500-2999	Misc. Manufac.
RENOVN REGIONAL MEDICAL CENTER	2500-2999	Hospitals
SILVER LEGACY RESORT CASINO	2000-2499	Casino Hotels
PEPPERMILL HOTEL CASINO - RENO	2000-2499	Casino Hotels
ATLANTIS CASINO RESORT	1500-1999	Casino Hotels
ELDORADO HOTEL & CASINO	1500-1999	Casino Hotels
GRAND SIERRA RESORT AND CASINO	1500-1999	Casino Hotels
CIRCUS CIRCUS CASINOS, INC.	1500-1999	Casino Hotels
ST. MARY'S	1500-1999	Hospitals
SPARKS NUGGET, INC.	1500-1999	Casino Hotels
HIRE DYNAMICS, LLC	1500-1999	Temporary Help
HARRAHS RENO	1500-1999	Casino Hotels
Q&D CONSTRUCTION	1000-1499	Commercial Bldg
INTEGRITY STAFFING SOLUTIONS	1000-1499	Temporary Help
UNITED PARCEL SERVICE	1000-1499	Couriers

## Labor Force and Unemployment

	MAR 2007	FEB 2007	MAR 2006	Monthly Change		Annual Change	
				Total	%	Total	%
Total Labor Force	226,100	227,100	214,800	-1,000	-0.4%	11,300	5.3%
Unemployment	10,000	10,800	8,800	-800	-7.4%	1,200	13.6%
<b>Unemployment Rate</b>	<b>4.4%</b>	<b>4.7%</b>	<b>4.1%</b>	*	*	*	*
Total Employment	216,100	216,300	206,000	-200	-0.1%	10,100	4.9%

## Reno-Sparks MSA Monthly Unemployment Rates 1993 to Current



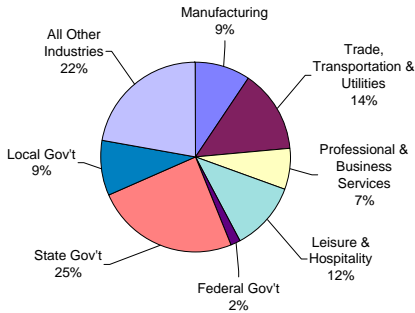
## 2006 Avg Wages By Industry-OES Survey Data

Industry	Avg. Hourly Wage
<b>Total All Industries</b>	<b>\$17.65</b>
Natural Resources and Mining	\$18.83
Construction	\$20.19
Manufacturing	\$18.92
Trade, Transportation & Utilities	\$16.46
Information	\$19.69
Financial Activities	\$20.77
Professional & Business Services	\$17.64
Education & Health Services	\$21.98
Leisure & Hospitality	\$10.21
Other Services	\$16.54
Government	\$23.32

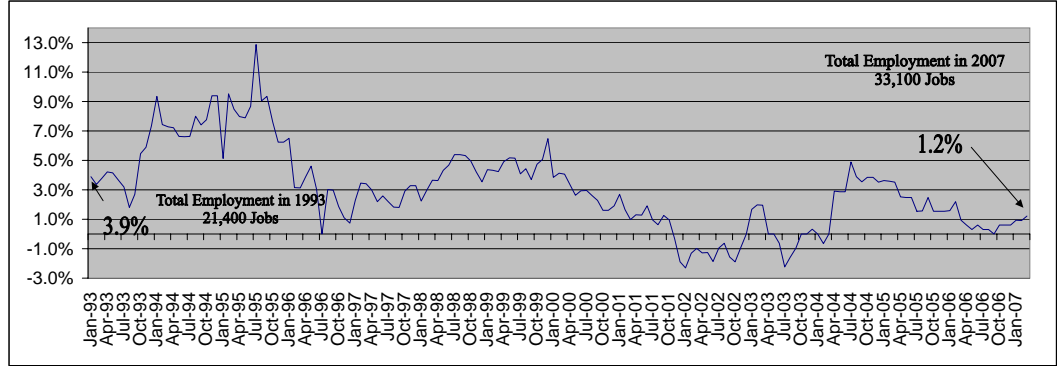
Employment data for current month is preliminary and previous month has been revised. All data subject to annual benchmark revisions.

\*MSA = Metropolitan Statistical Area / Reno-Sparks MSA = Washoe County and Storey County

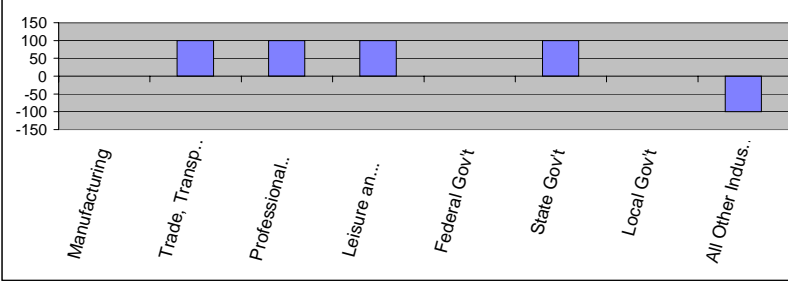
## Carson City MSA Industry Composition



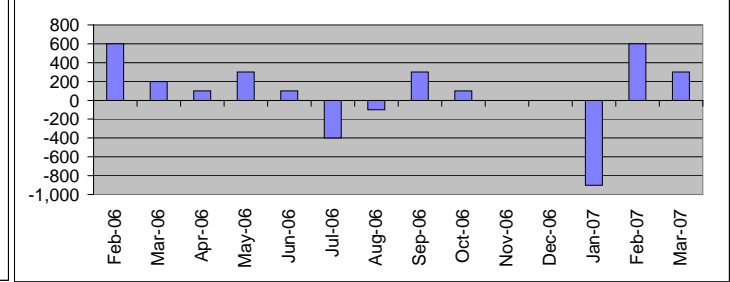
## Annual Job Growth Rate for Total NonAgricultural Employment



## Monthly Change by Industry



## Monthly Change In Total Non-Ag. Employment



## Carson City MSA Employment By Industry

	MAR 2007	FEB 2007	MAR 2006	Monthly Change		Annual Change	
				Total	%	Total	%
<b>Total All Industries</b>	<b>33,100</b>	<b>32,800</b>	<b>32,700</b>	<b>300</b>	<b>0.9%</b>	<b>400</b>	<b>1.2%</b>
<b>Goods Producing</b>	<b>5,300</b>	<b>5,300</b>	<b>5,200</b>	<b>0</b>	<b>0.0%</b>	<b>100</b>	<b>1.9%</b>
<b>Manufacturing</b>	<b>3,100</b>	<b>3,100</b>	<b>3,100</b>	<b>0</b>	<b>0.0%</b>	<b>0</b>	<b>0.0%</b>
<b>Services Producing</b>	<b>27,800</b>	<b>27,500</b>	<b>27,500</b>	<b>300</b>	<b>1.1%</b>	<b>300</b>	<b>1.1%</b>
<b>Private Services Producing</b>	<b>16,100</b>	<b>15,900</b>	<b>16,400</b>	<b>200</b>	<b>1.3%</b>	<b>-300</b>	<b>-1.8%</b>
<b>Trade, Transportation &amp; Utilities</b>	<b>4,700</b>	<b>4,600</b>	<b>4,700</b>	<b>100</b>	<b>2.2%</b>	<b>0</b>	<b>0.0%</b>
Retail	3,500	3,400	3,600	100	2.9%	-100	-2.8%
<b>Professional &amp; Business Services</b>	<b>2,300</b>	<b>2,200</b>	<b>2,500</b>	<b>100</b>	<b>4.5%</b>	<b>-200</b>	<b>-8.0%</b>
<b>Leisure &amp; Hospitality</b>	<b>3,900</b>	<b>3,800</b>	<b>4,000</b>	<b>100</b>	<b>2.6%</b>	<b>-100</b>	<b>-2.5%</b>
<b>Government</b>	<b>11,700</b>	<b>11,600</b>	<b>11,100</b>	<b>100</b>	<b>0.9%</b>	<b>600</b>	<b>5.4%</b>
Federal	500	500	500	0	0.0%	0	0.0%
State	8,100	8,000	7,500	100	1.3%	600	8.0%
Local	3,100	3,100	3,100	0	0.0%	0	0.0%

## Size Class of Industries - Sep 2006 (Non-Government Worksites)

Size Class	Employees Per Worksites	Number of Worksites	Employment in Size Class	% of Total Employment
9	1000+	0	0	0.0%
8	500-999	0	0	0.0%
7	250-499	5	1,910	8.9%
6	100-249	20	3,082	14.4%
5	50-99	51	3,462	16.1%
4	20-49	163	4,910	22.9%
3	10-19	254	3,390	15.8%
2	5-9	393	2,612	12.2%
1	0-4	992	2,078	9.7%
<b>Total</b>		<b>1,878</b>	<b>21,444</b>	<b>100.0%</b>

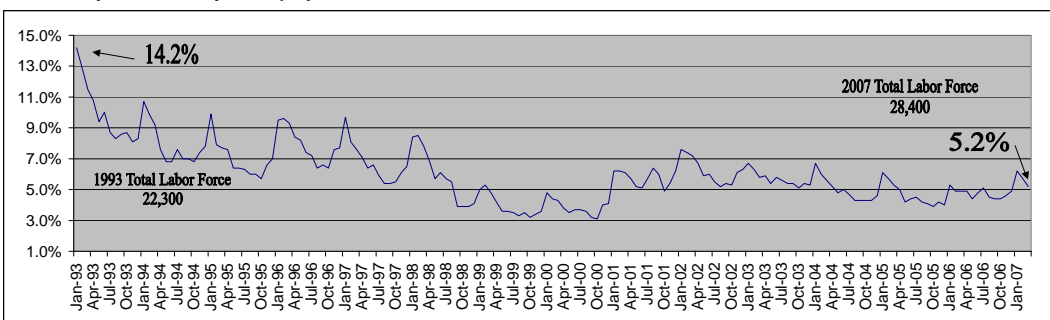
## Largest Private Employers - Sep 2006

Employer	Employees	Industry
CARSON CITY NUGGET	400-499	Casinos
CASINO FANDANGO	400-499	Casinos
CHROMALLOY NEVADA	400-499	Aircraft Engines
WAL-MART SUPERCENTER	300-399	Warehouse Clubs
GOLD DUST WEST CARSON CITY	200-299	Casino Hotels
PCC STRUCTURALS - CARSON	200-299	Steel Foundries
HARLEY-DAVIDSON CREDIT CORP	200-299	Sales Financing
COSTCO WHOLESALE CORP.	200-299	Warehouse Clubs
MISSION INDUSTRIES	200-299	Linen Supply
CARSON STATION HOTEL CASINO	200-299	Casinos
CLICK BOND, INC.	100-199	Bolts, Nuts Mfg.
LOWES HOME IMPROVEMENT	100-199	Home Centers
SLOTWORLD INC	100-199	Casinos
NEVADA APPEAL	100-199	Newspapers
WESTERN TEMPORARY SERVICES USA	100-199	Temporary Help

## Labor Force and Unemployment

	MAR 2007	FEB 2007	MAR 2006	Monthly Change		Annual Change	
				Total	%	Total	%
Total Labor Force	28,400	28,500	27,700	-100	-0.4%	700	2.5%
Unemployment	1,500	1,600	1,300	-100	-6.3%	200	15.4%
<b>Unemployment Rate</b>	<b>5.2%</b>	<b>5.7%</b>	<b>4.9%</b>	*	*	*	*
Total Employment	26,900	26,900	26,400	0	0.0%	500	1.9%

## Carson City MSA Monthly Unemployment Rates 1993 to Current



## 2006 Avg Wages By Industry-OES Survey Data

Industry	Avg. Hourly Wage
<b>Total All Industries</b>	<b>\$18.25</b>
Natural Resources and Mining	N/A
Construction	\$19.19
Manufacturing	\$17.62
Trade, Transportation & Utilities	\$16.24
Information	\$17.76
Financial Activities	\$15.77
Professional & Business Services	\$19.01
Education & Health Services	\$19.69
Leisure & Hospitality	\$9.37
Other Services	\$13.80
Government	\$23.64

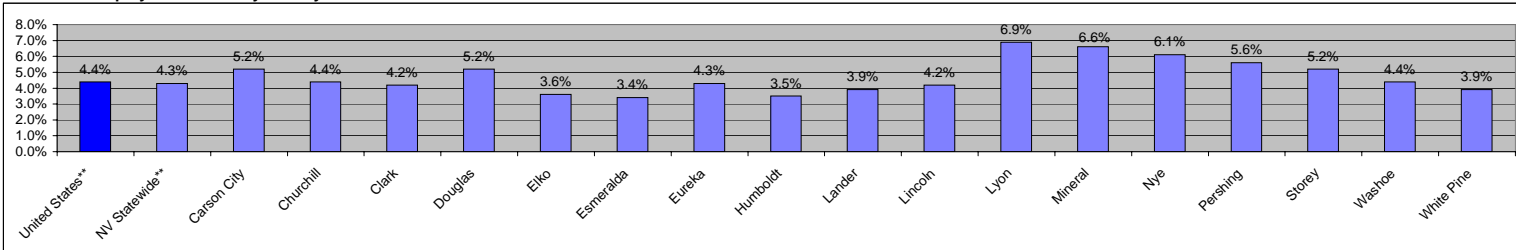
Employment data for current month is preliminary and previous month has been revised. All data subject to annual benchmark revisions.

\*MSA = Metropolitan Statistical Area / Carson City MSA = Carson City

# Nevada County Employment and Unemployment Summary

March 2007

## Current Unemployment Rates By County



## Total Labor Force - March 2007

	Total Labor Force	# of Employed	# of Unemployed	Unemp. Rate
Nevada**	1,332,200	1,274,500	57,700	4.3%
Carson City	28,410	26,920	1,490	5.2%
Churchill	12,930	12,360	570	4.4%
Clark	954,980	915,020	39,960	4.2%
Douglas	22,450	21,270	1,180	5.2%
Elko	25,140	24,220	920	3.6%
Esmeralda	470	450	20	3.4%
Eureka	720	690	30	4.3%
Humboldt	8,000	7,720	280	3.5%
Lander	3,030	2,910	120	3.9%
Lincoln	1,600	1,530	70	4.2%
Lyon	21,760	20,250	1,510	6.9%
Mineral	2,000	1,870	130	6.6%
Nye	17,780	16,690	1,090	6.1%
Pershing	2,360	2,230	130	5.6%
Storey	2,450	2,320	130	5.2%
Washoe	223,690	213,780	9,910	4.4%
White Pine	4,430	4,260	170	3.9%
Elko Micropolitan Area***	25,870	24,920	950	3.7%

## Total Labor Force - March 2006

	Total Labor Force	# of Employed	# of Unemployed	Unemp. Rate
Nevada**	1,251,200	1,202,400	48,800	3.8%
Carson City	27,740	26,390	1,350	4.9%
Churchill	12,690	12,100	590	4.7%
Clark	890,750	857,750	33,000	3.7%
Douglas	22,010	20,970	1,040	4.7%
Elko	23,700	22,750	950	4.0%
Esmeralda	450	430	20	4.0%
Eureka	690	660	30	4.3%
Humboldt	7,750	7,440	310	4.0%
Lander	2,810	2,680	130	4.5%
Lincoln	1,490	1,420	70	4.6%
Lyon	20,790	19,600	1,190	5.7%
Mineral	2,110	1,960	150	6.9%
Nye	16,790	15,980	810	4.8%
Pershing	2,380	2,240	140	5.9%
Storey	2,170	2,070	100	4.6%
Washoe	212,650	203,950	8,700	4.1%
White Pine	4,210	4,020	190	4.5%
Elko Micropolitan Area***	24,390	23,410	980	4.0%

## Labor Force Change (March 2006 to March 2007)

	Change In Total Labor Force		Change In Number of Employed		Change In Number of Unemployed	
	Number	Percent	Number	Percent	Number	Percent
Nevada**	81,000	6.5%	72,100	6.0%	8,900	18.2%
Carson City	670	2.4%	530	2.0%	140	10.4%
Churchill	240	1.9%	260	2.1%	-20	-3.4%
Clark	64,230	7.2%	57,270	6.7%	6,960	21.1%
Douglas	440	2.0%	300	1.4%	140	13.5%
Elko	1,440	6.1%	1,470	6.5%	-30	-3.2%
Esmeralda	20	4.4%	20	4.7%	0	0.0%
Eureka	30	4.3%	30	4.5%	0	0.0%
Humboldt	250	3.2%	280	3.8%	-30	-9.7%
Lander	220	7.8%	230	8.6%	-10	-7.7%
Lincoln	110	7.4%	110	7.7%	0	0.0%
Lyon	970	4.7%	650	3.3%	320	26.9%
Mineral	-110	-5.2%	-90	-4.6%	-20	-13.3%
Nye	990	5.9%	710	4.4%	280	34.6%
Pershing	-20	-0.8%	-10	-0.4%	-10	-7.1%
Storey	280	12.9%	250	12.1%	30	30.0%
Washoe	11,040	5.2%	9,830	4.8%	1,210	13.9%
White Pine	220	5.2%	240	6.0%	-20	-10.5%
Elko Micropolitan Area***	1,480	6.1%	1,510	6.5%	-30	-3.1%

## Employment by Area - 3rd Quarter 2006 (Jul-Sep) Average

	3rd Qtr 2006	3rd Qtr 2005	Total Change	% Change
Nevada	1,278,258	1,227,956	50,302	4.1%
Carson City	31,648	32,115	-467	-1.5%
Churchill	8,776	8,679	97	1.1%
Clark	914,772	872,158	42,614	4.9%
Douglas	22,314	22,227	87	0.4%
Elko	21,051	20,509	542	2.6%
Esmeralda	234	230	4	1.7%
Eureka	4,386	3,907	479	12.3%
Humboldt	7,824	7,736	88	1.1%
Lander	2,048	2,107	-59	-2.8%
Lincoln	1,351	1,265	86	6.8%
Lyon	13,057	12,478	579	4.6%
Mineral	1,693	1,723	-30	-1.7%
Nye	12,742	12,138	604	5.0%
Pershing	1,887	1,891	-4	-0.2%
Storey	2,403	1,387	1,016	73.3%
Washoe	220,285	215,351	4,934	2.3%
White Pine	4,012	3,909	103	2.6%

## Employment By Industry - 3rd Quarter 2006 (Jul-Sep) Average

	Nat. Resources & Mining	Const	Manuf	Trade, Transp. & Utilities	Information	Financial Activities	Profess. & Bus. Svcs	Education & Health Svcs	Leisure and Hospitality	Other Services	Gov't
Nevada	14,353	146,149	51,094	225,847	15,485	66,175	158,283	87,248	341,614	29,134	141,737
Carson City	*	2,180	3,165	4,601	297	1,558	2,482	2,289	3,983	910	10,158
Churchill	293	780	493	1,918	128	337	952	827	1,093	150	1,804
Clark	542	110,474	27,412	155,854	11,351	50,854	114,785	59,818	274,472	20,691	87,828
Douglas	180	2,164	1,810	2,782	234	812	1,739	1,112	8,852	380	2,232
Elko	2,536	1,528	217	3,649	193	526	950	1,093	6,146	537	3,667
Esmeralda	75	19	*	18	*	0	12	0	*	*	96
Eureka	3,754	*	*	55	*	*	8	*	43	9	196
Humboldt	2,159	390	322	1,512	92	114	372	273	1,181	143	1,259
Lander	714	18	*	445	*	21	46	35	212	5	506
Lincoln	32	39	*	214	21	50	*	27	86	6	637
Lyon	793	1,494	2,448	2,613	23	267	741	648	1,634	307	2,072
Mineral	23	23	8	140	*	36	*	103	251	7	594
Nye	1,204	1,215	354	1,806	90	324	2,823	799	2,143	219	1,743
Pershing	562	29	42	193	10	27	17	39	183	48	737
Storey	84	154	406	1,141	*	19	77	8	172	142	198
Washoe	546	24,355	14,301	46,108	2,750	10,695	29,040	19,884	40,536	5,376	26,535
White Pine	765	172	33	552	33	95	129	142	544	80	1,467

## Hours and Earnings

	Production Workers (in 000's)			Average Weekly Earnings			Average Weekly Hours			Average Hourly Earnings		
	MAR 2007	MAR 2006	FEB 2007	MAR 2007	MAR 2006	FEB 2007	MAR 2007	MAR 2006	FEB 2007	MAR 2007	MAR 2006	FEB 2007
Nevada	110,800	112,000	110,200	\$830.30	\$804.79	\$837.06	38.0	36.9	38.1	\$21.85	\$21.81	\$21.97
Construction	110,800	112,000	110,200	\$830.30	\$804.79	\$837.06	38.0	36.9	38.1	\$21.85	\$21.81	\$21.97
Manufacturing	36,900	37,000	36,800	\$610.72	\$602.86	\$610.70	39.3	39.3	39.4	\$15.54	\$15.34	\$15.50
Durable Goods	25,000	25,700	24,900	\$616.14	\$610.74	\$616.57	38.8	39.1	38.9	\$15.88	\$15.62	\$15.85
Non-durable Goods	11,900	11,300	11,900	\$596.97	\$587.33	\$596.04	40.2	39.9	40.3	\$14.85	\$14.72	\$14.79
Wholesale Trade	31,700	31,700	31,500	\$606.71	\$592.62	\$599.76	35.9	35.7	35.7	\$16.90	\$16.60	\$16.80
Retail Trade	121,400	116,000	120,500	\$436.90	\$435.02	\$438.19	34.0	34.2	34.1	\$12.85	\$12.72	\$12.85
Las Vegas-Paradise MSA	86,500	87,100	85,300	\$888.56	\$880.30	\$894.36	38.3	37.7	38.6	\$23.20	\$23.35	\$23.17
Construction	86,500	87,100	85,300	\$888.56	\$880.30	\$894.36	38.3	37.7	38.6	\$23.20	\$23.35	\$23.17
Manufacturing	20,300	20,800	20,100	\$596.77	\$582.98	\$595.19	39.6	39.1	39.6	\$15.07	\$14.91	\$15.03
Wholesale Trade	18,300	18,800	19,000	\$657.40	\$624.46	\$652.21	38.0	38.1	37.7	\$17.30	\$16.39	\$17.30
Retail Trade	86,400	83,500	86,100	\$447.03	\$452.57	\$446.78	34.6	34.6	34.5	\$12.92	\$13.08	\$12.95

## Seasonally Adjusted Employment (Statewide Only)

Employment In Thousands	Feb-06	Mar-06	Apr-06	May-06	Jun-06	Jul-06	Aug-06	Sep-06	Oct-06	Nov-06	Dec-06	Jan-07	Feb-07	Mar-07
Total All Industries	1270.0	1273.1	1275.6	1279.8	1284.7	1282.0	1283.4	1285.7	1288.0	1293.7	1300.1	1302.2	1310.2	1312.4
Natural Resources and Mining	11.2	11.3	11.4	11.5	11.6	11.5	11.6	11.6	11.9	11.9	11.9	11.8	12.1	12.2
Construction	146.1	145.3	145.2	145.6	145.4	143.2	142.5	141.4	141.5	142.1	142.3	141.5	142.9	143.0
Manufacturing	49.4	49.8	50.1	50.4	50.7	50.7	50.6	51.0	51.1	51.2	51.3	51.8	51.8	51.8
Trade, Transportation & Utilities	224.1	225.8	225.3	226.1	226.3	226.1	227.0	227.3	227.1	227.8	228.8	232.1	233.2	234.3
Retail	136.6	137.8	137.2	137.4	137.2	136.9	137.2	137.2	137.1	137.4	137.8	140.2	141.2	141.7
Information	15.2	14.7	15.0	15.1	15.1	15.6	15.7	15.2	15.7	15.4	15.6	15.4	15.5	15.4
Financial Activities	64.8	65.1	65.2	65.5	65.7	65.8	65.9	66.0	66.3	66.5	66.8	66.4	66.7	66.8
Professional & Business Services	155.3	156.6	156.6	157.5	158.7	158.1	158.2	158.5	157.5	159.7	162.4	162.2	164.4	165.3
Education & Health Services	86.1	86.4	86.2	86.6	87.2	87.3	87.8	88.7	88.7	88.9	89.5	89.5	90.0	90.3
Leisure & Hospitality	334.9	335.2	335.8	336.4	338.3	337.3	336.8	338.3	338.6	339.6	340.4	341.0	341.6	341.5
Casino Hotels and Gaming	218.1	217.1	216.6	216.7	217.4	217.1	217.0	216.9	216.6	216.7	216.3	217.1	216.7	216.6
Other Services	35.0	35.2	35.6	36.0	36.0	36.0	36.4	36.4	37.3	37.6	38.0	36.7	36.8	37.1
Government	147.9	147.7	149.2	149.1	149.7	150.4	150.9	151.3	152.3	153.0	153.1	153.8	155.2	154.7

Employment data for current month is preliminary and previous month has been revised. All data subject to annual benchmark revisions.

\* Indicates Data Suppressed Due To Confidentiality. \*\*The United States and Nevada statewide unemployment rates are seasonally adjusted.

\*\*\* Elko Micropolitan Statistical Area = Elko and Eureka Counties

State of Nevada  
Department of Employment, Training & Rehabilitation  
Research & Analysis Bureau  
500 E. Third Street  
Carson City, NV 89713-0001

# Nevada Economy In Brief

The Nevada Economy in Brief provides a wealth of Nevada workforce and economic information and is published monthly by the Nevada Department of Employment, Training and Rehabilitation / Research and Analysis Bureau. Material contained in this publication is produced in cooperation with the U.S. Department of Labor (Bureau of Labor Statistics and the Employment and Training Administration) and may be reproduced without permission. Please credit Nevada Department of Employment, Training and Rehabilitation. For additional workforce or other economic information, a free subscription to the Nevada Economy in Brief, or to change your mailing address, please contact the Research and Analysis Bureau.

Phone (775) 684-0450  
Fax (775) 684-0342  
E-mail [detrlmi@nvdetr.org](mailto:detrlmi@nvdetr.org)

Websites  
[www.nevadaworkforce.com](http://www.nevadaworkforce.com)  
[www.nevadajobconnect.com](http://www.nevadajobconnect.com)  
[www.nvdetr.org](http://www.nvdetr.org)



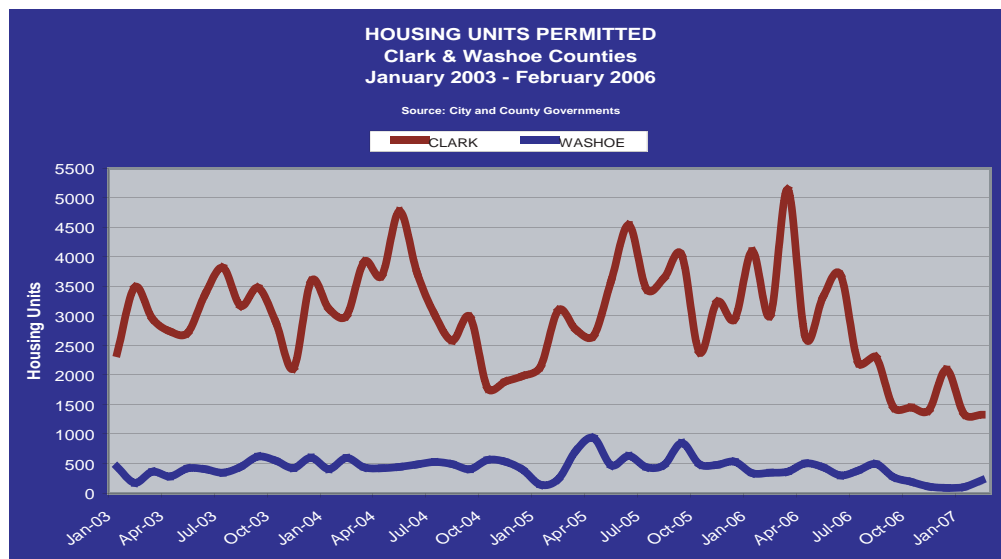


# Nevada Economy In Brief



## February 2007

Nevada's unemployment picture improved noticeably in February, recovering much of the ground lost in January due to seasonal factors. The statewide seasonally adjusted unemployment rate fell two-tenths of a percentage point to 4.3 percent, and the unemployment rate declined by at least three-tenths of a percentage point in each of the state's metropolitan areas. With schools and colleges returning from winter break, the public sector



### Economic Indicators

#### UNEMPLOYMENT RATES FEB 2007

NEVADA (SA)*	4.3%
LAS VEGAS-PARADISE MSA	4.3%
RENO-SPARKS MSA	4.7%
CARSON CITY MSA	5.7%
ELKO MICROPOLITAN AREA	4.0%
UNITED STATES (SA)*	4.5%
CALIFORNIA (SA)*	4.8%

\* (SA) - Seasonally Adjusted

#### JOB GROWTH (LAST 12 MONTHS)

NEVADA	3.5%
LAS VEGAS-PARADISE MSA	3.6%
RENO-SPARKS MSA	3.3%
CARSON CITY MSA	0.9%
UNITED STATES	1.5%
CALIFORNIA	1.5%

#### CONSUMER PRICE INDEX (1yr %Chg)

UNITED STATES	2.4%
---------------	------

#### GROSS GAMING WIN (% CHANGE)

##### JAN 2006 - JAN 2007

NEVADA	-2.1%
CLARK COUNTY	-2.0%
WASHOE COUNTY	-6.3%

#### TAXABLE SALES (% CHANGE)

##### DEC 2005 - DEC 2006

NEVADA	0.9%
CLARK COUNTY	-0.8%
WASHOE COUNTY	0.9%

contributed more than one-half of the 13,100 jobs regained over the month.

Although the construction industry contributed 2,200 jobs to the monthly employment increase, the short-term outlook for Nevada's housing market remains problematic. Permits for new housing units, an indicator of future home construction activity, have decreased dramatically over the past nine months, falling approximately 50 percent in both Clark and Washoe counties compared to the same period a year earlier. The failure of several sub-prime mortgage lenders, whose loans allow people with marginal credit and/or no down payment to buy houses, will reduce the pool of potential buyers at a time when the inventory of homes for sale has increased. Meanwhile, available information suggests that housing prices, although relatively stable right now, have risen markedly over the past few years, a trend which may end up impairing the ability of Nevadans to purchase homes.

While Nevada's housing industry mirrors a nationwide problem, the state's relatively small manufacturing sector is quietly and dramatically bucking a national trend. Manufacturing employment increased by 5.3 percent in Nevada over the past 12 months, and the industry generated 2,600 new jobs. During the same period, nearly 100,000 manufacturing jobs have been lost nationwide, a 0.7 percent decline in

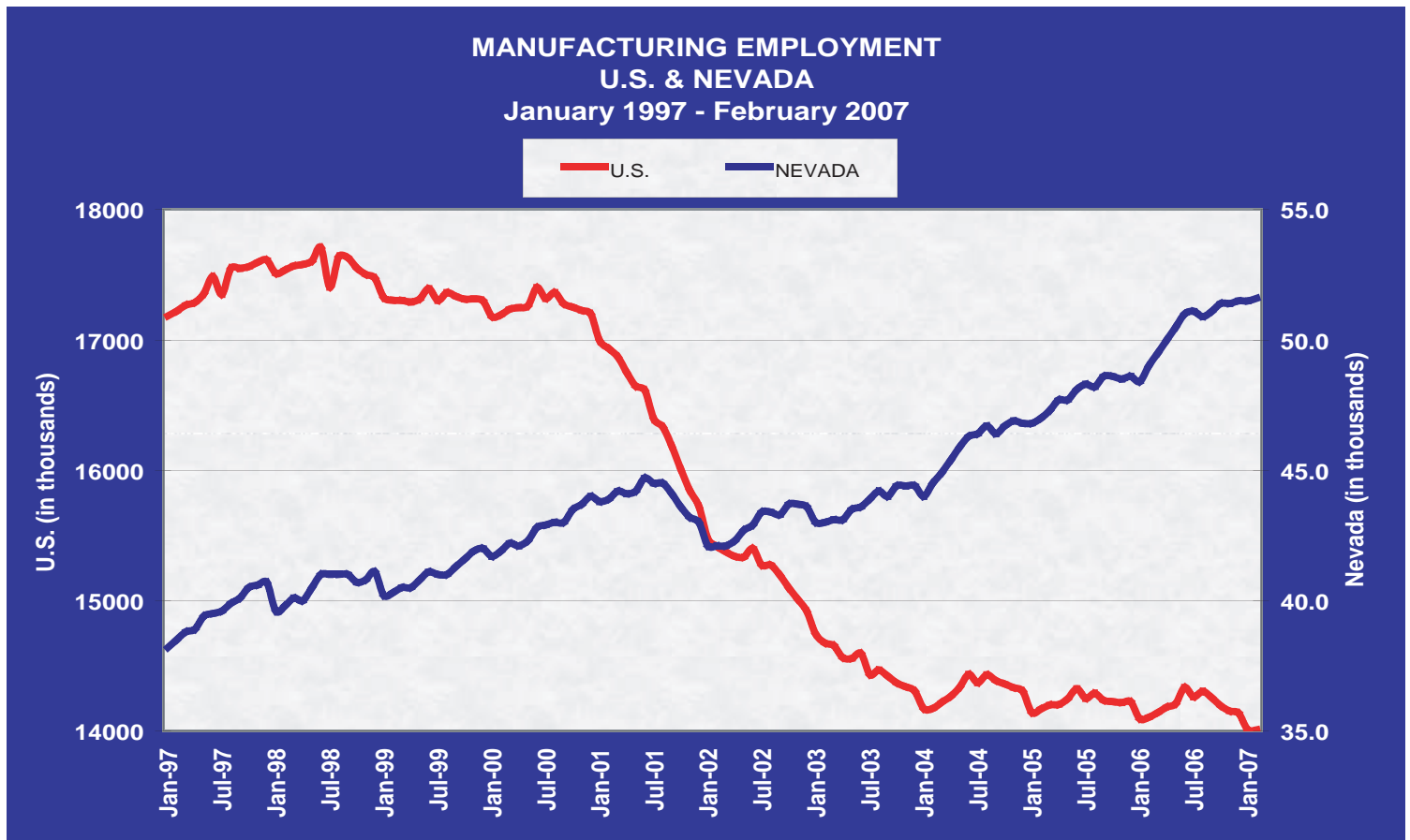
(Continued on Page 2...)

### In This Issue

Nevada Economy In Brief.....	1&2
Manufacturing Employment.....	2
Employment/Unemployment Data Nevada Statewide.....	3
Las Vegas-Paradise MSA.....	4
Reno-Sparks MSA.....	5
Carson City MSA.....	6
Nevada County Summary.....	7
Contact Information.....	8

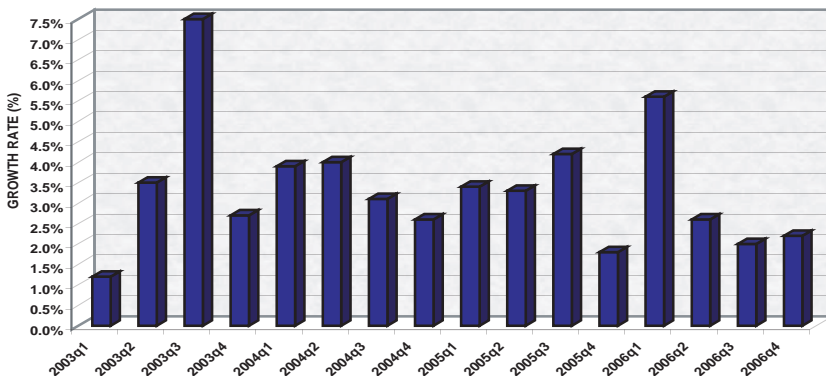
(Note: Data for March 2007 will be released on April 20, 2007)

employment. The growth in Nevada's manufacturing sector has been broadly based. Both components of the manufacturing industry—durable goods (items expected to last more than three years, like slot machines) and non-durable goods (food items, etc.)—have increased employment by at least 5 percent over the past year.



Meanwhile, a series of debates rage at the national level. How big an effect will the housing slowdown have on the economy as a whole? Is inflation or recession a bigger threat? Will the Federal Reserve raise interest rates, lower them, or keep its current policy in place? Was the recent downturn in the Chinese stock market a precursor of a slowing global economy or just a temporary correction? The answer to these questions may help determine the fate of Nevada's economy in the near future. While Nevada has usually fared better than the nation as a whole during an economic downturn, it is not immune to the problems that occur elsewhere. The state's economy remains dependent upon tourists from the U.S. and abroad, the rural counties' mining interests sell much of their product overseas, and the Reno area provides warehousing and transportation services for the West Coast. A significant economic downturn, should it happen, would affect the entire state.

U.S. GROSS DOMESTIC PRODUCT (GDP)  
Annual Rate of Change  
By Quarter, 2003 - Present

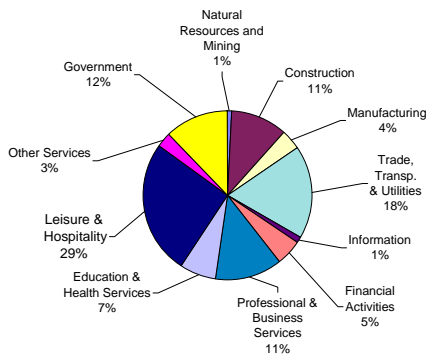


NOTE -- In this issue the following items have been updated with data from the 3rd quarter of 2006:

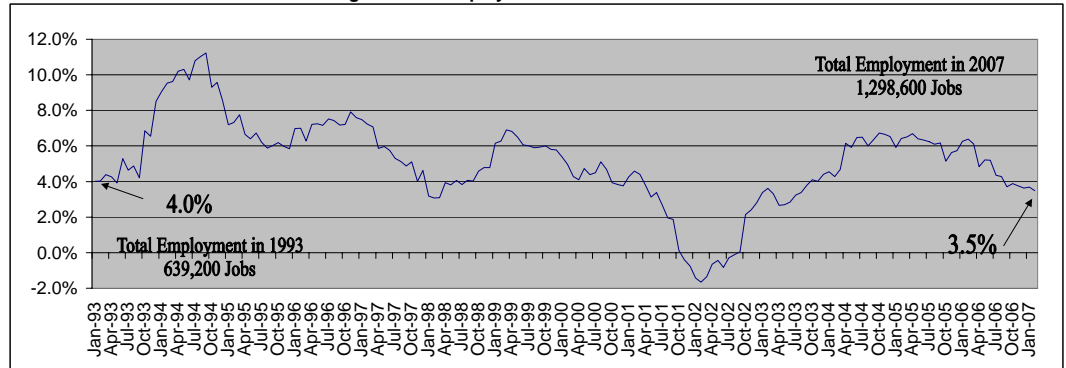
Pages 3-6 - Size Class of Industries  
Largest Private Employers

Page 7 - Employment by Area  
County Employment by Industry

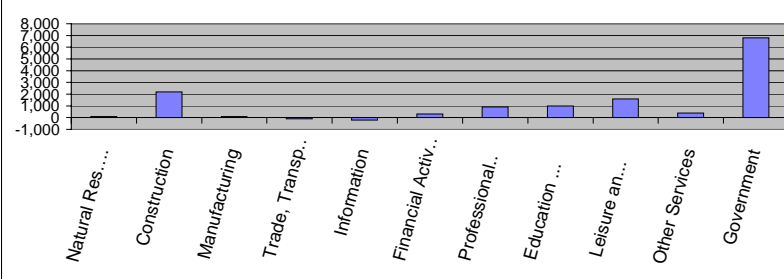
## Nevada Industry Composition



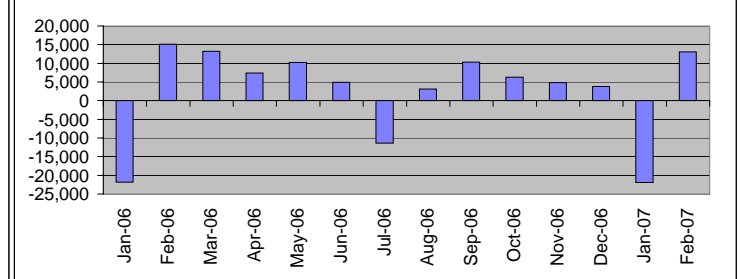
## Annual Job Growth Rate for Total NonAgricultural Employment



## Monthly Change by Industry



## Monthly Change In Total Non-Ag. Employment



## Nevada Employment By Industry

	FEB 2007	JAN 2007	FEB 2006	Monthly Change		Annual Change	
				Total	%	Total	%
<b>Total All Industries</b>	<b>1,298,600</b>	<b>1,285,500</b>	<b>1,254,800</b>	<b>13,100</b>	<b>1.0%</b>	<b>43,800</b>	<b>3.5%</b>
<b>Natural Resources and Mining</b>	<b>11,900</b>	<b>11,800</b>	<b>10,900</b>	<b>100</b>	<b>0.8%</b>	<b>1,000</b>	<b>9.2%</b>
<b>Construction</b>	<b>139,100</b>	<b>136,900</b>	<b>140,200</b>	<b>2,200</b>	<b>1.6%</b>	<b>-1,100</b>	<b>-0.8%</b>
<b>Manufacturing</b>	<b>51,600</b>	<b>51,500</b>	<b>49,000</b>	<b>100</b>	<b>0.2%</b>	<b>2,600</b>	<b>5.3%</b>
<b>Trade, Transportation &amp; Utilities</b>	<b>230,000</b>	<b>230,100</b>	<b>220,200</b>	<b>-100</b>	<b>0.0%</b>	<b>9,800</b>	<b>4.5%</b>
Wholesale	39,500	39,400	38,100	100	0.3%	1,400	3.7%
Retail	138,600	139,000	133,600	-400	-0.3%	5,000	3.7%
Trans, Warehousing and Utilities	51,900	51,700	48,500	200	0.4%	3,400	7.0%
<b>Information</b>	<b>15,200</b>	<b>15,400</b>	<b>15,200</b>	<b>-200</b>	<b>-1.3%</b>	<b>0</b>	<b>0.0%</b>
<b>Financial Activities</b>	<b>66,200</b>	<b>65,900</b>	<b>64,200</b>	<b>300</b>	<b>0.5%</b>	<b>2,000</b>	<b>3.1%</b>
Finance and Insurance	39,400	39,200	38,400	200	0.5%	1,000	2.6%
<b>Professional &amp; Business Services</b>	<b>163,200</b>	<b>162,300</b>	<b>154,600</b>	<b>900</b>	<b>0.6%</b>	<b>8,600</b>	<b>5.6%</b>
<b>Education &amp; Health Services</b>	<b>90,000</b>	<b>89,000</b>	<b>86,100</b>	<b>1,000</b>	<b>1.1%</b>	<b>3,900</b>	<b>4.5%</b>
Health Care and Social Assistance	83,100	82,400	79,700	700	0.8%	3,400	4.3%
<b>Leisure &amp; Hospitality</b>	<b>337,000</b>	<b>335,400</b>	<b>330,000</b>	<b>1,600</b>	<b>0.5%</b>	<b>7,000</b>	<b>2.1%</b>
Casino Hotels and Gaming	213,700	213,400	214,500	300	0.1%	-800	-0.4%
Food Services and Drinking Places	94,400	93,200	88,400	1,200	1.3%	6,000	6.8%
<b>Other Services</b>	<b>36,700</b>	<b>36,300</b>	<b>34,300</b>	<b>400</b>	<b>1.1%</b>	<b>2,400</b>	<b>7.0%</b>
<b>Government</b>	<b>157,700</b>	<b>150,900</b>	<b>150,100</b>	<b>6,800</b>	<b>4.5%</b>	<b>7,600</b>	<b>5.1%</b>

## Size Class of Industries - Sep 2006 (Non-Government Worksites)

Size Class	Employees Per Worksite	Number of Worksites	Employment in Size Class	% of Total Employment
9	1000+	105	227,457	20.0%
8	500-999	120	80,533	7.1%
7	250-499	265	92,130	8.1%
6	100-249	1,105	167,382	14.7%
5	50-99	2,036	140,986	12.4%
4	20-49	5,882	177,646	15.6%
3	10-19	8,583	116,443	10.2%
2	5-9	11,723	78,145	6.9%
1	0-4	28,909	57,076	5.0%
<b>Total</b>		<b>58,728</b>	<b>1,137,798</b>	<b>100.0%</b>

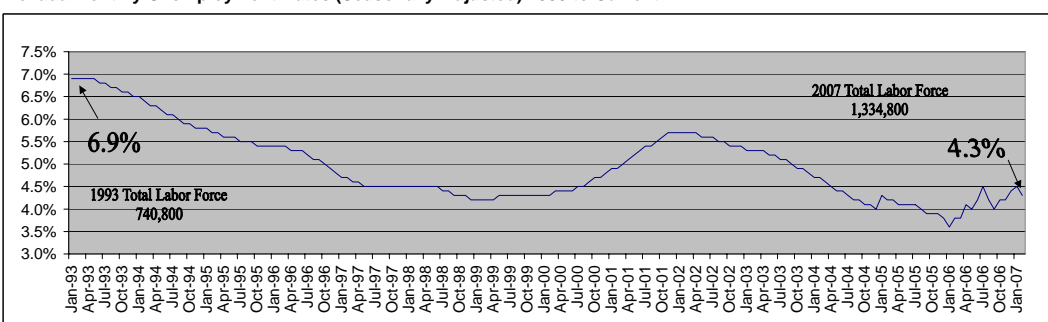
## Nevada's Largest Private Employers - Sep 2006

Employer	Employees	Industry
BELLAGIO, LLC	9000-9499	Casino Hotels
WYNN LAS VEGAS, LLC	8500-8999	Casino Hotels
MGM GRAND HOTEL/CASINO	8500-8999	Casino Hotels
MANDALAY BAY RESORT AND CASINO	7500-7999	Casino Hotels
VENETIAN RESORTS LLC	5500-5999	Casino Hotels
CAESARS PALACE	5500-5999	Casino Hotels
MIRAGE CASINO-HOTEL	5500-5999	Casino Hotels
RIO SUITE HOTEL & CASINO	4000-4499	Casino Hotels
FLAMINGO HILTON	4000-4499	Casino Hotels
LUXOR	3500-3999	Casino Hotels
HARRAH'S LAS VEGAS	3500-3999	Casino Hotels
BALLY'S & PARIS CASINO HOTELS	3500-3999	Casino Hotels
TREASURE ISLAND AT THE MIRAGE	3500-3999	Casino Hotels
EXCALIBUR HOTEL & CASINO	3000-3499	Casino Hotels
CIRCUS CIRCUS CASINOS INC.	3000-3499	Casino Hotels

## Labor Force and Unemployment

	FEB 2007	JAN 2007	FEB 2006	Monthly Change		Annual Change	
				Total	%	Total	%
Total Labor Force	1,334,800	1,326,300	1,261,200	8,500	0.6%	73,600	5.8%
Unemployment	60,500	65,200	50,100	-4,700	-7.2%	10,400	20.8%
Unemployment Rate	4.5%	4.9%	4.0%	*	*	*	*
<b>Unemployment Rate (SA)</b>	<b>4.3%</b>	<b>4.5%</b>	<b>3.8%</b>	*	*	*	*
Total Employment	1,274,300	1,261,100	1,211,100	13,200	1.0%	63,200	5.2%

## Nevada Monthly Unemployment Rates (Seasonally Adjusted) 1993 to Current

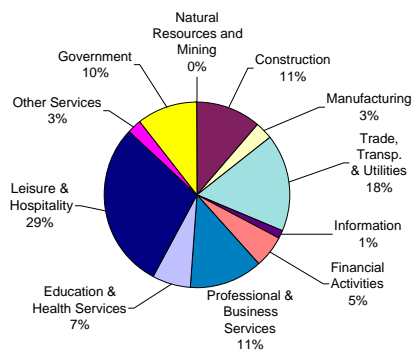


## 2006 Avg Wages By Industry-OES Survey Data

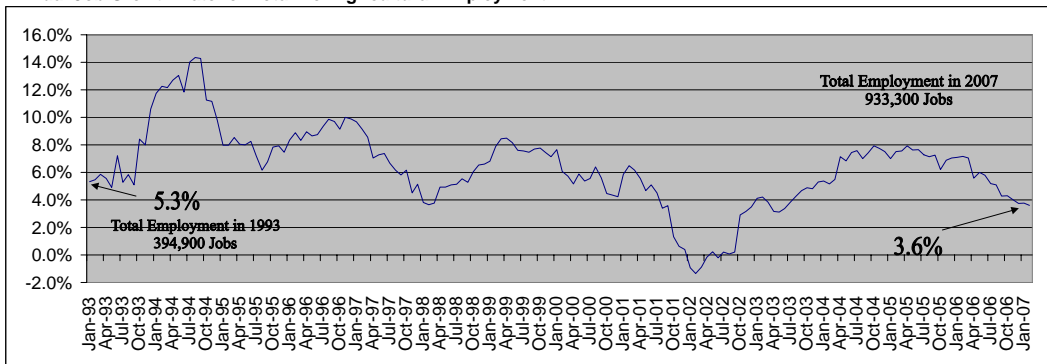
Industry	Avg. Hourly Wage
<b>Total All Industries</b>	<b>\$17.07</b>
Natural Resources and Mining	\$23.31
Construction	\$20.49
Manufacturing	\$18.26
Trade, Transportation & Utilities	\$15.74
Information	\$22.57
Financial Activities	\$19.72
Professional & Business Services	\$19.22
Education & Health Services	\$20.34
Leisure & Hospitality	\$11.77
Other Services	\$15.04
Government	\$23.83

Employment data for current month is preliminary and previous month has been revised. All data subject to annual benchmark revisions.  
 Note: The statewide unemployment rate is seasonally adjusted

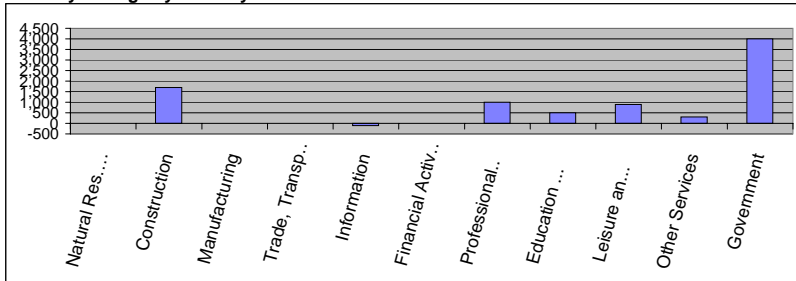
## Las Vegas-Paradise MSA Industry Composition



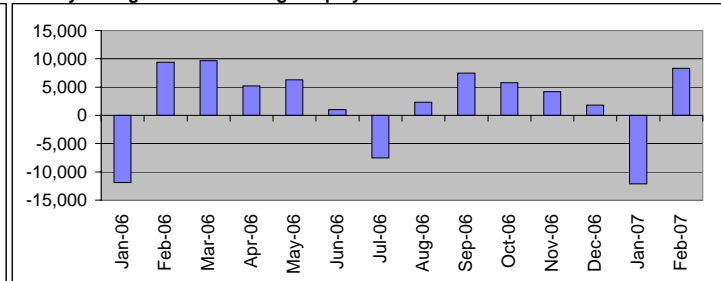
## Annual Job Growth Rate for Total NonAgricultural Employment



## Monthly Change by Industry



## Monthly Change In Total Non-Ag. Employment



## Las Vegas-Paradise MSA Employment By Industry

	FEB 2007	JAN 2007	FEB 2006	Monthly Change		Annual Change	
				Total	%	Total	%
<b>Total All Industries</b>	<b>933,300</b>	<b>925,000</b>	<b>900,800</b>	<b>8,300</b>	<b>0.9%</b>	<b>32,500</b>	<b>3.6%</b>
Natural Resources and Mining	400	400	400	0	0.0%	0	0.0%
Construction	107,000	105,300	107,100	1,700	1.6%	-100	-0.1%
Manufacturing	27,800	27,800	26,100	0	0.0%	1,700	6.5%
Trade, Transportation & Utilities	158,800	158,800	152,100	0	0.0%	6,700	4.4%
Wholesale	24,200	24,100	23,000	100	0.4%	1,200	5.2%
Retail	98,900	99,200	95,400	-300	-0.3%	3,500	3.7%
Trans, Warehousing and Utilities	35,700	35,500	33,700	200	0.6%	2,000	5.9%
Information	11,400	11,500	10,800	-100	-0.9%	600	5.6%
Financial Activities	51,100	51,100	49,000	0	0.0%	2,100	4.3%
Finance and Insurance	30,000	30,000	28,900	0	0.0%	1,100	3.8%
Professional & Business Services	120,600	119,600	114,100	1,000	0.8%	6,500	5.7%
Education & Health Services	61,800	61,300	59,100	500	0.8%	2,700	4.6%
Health Care and Social Assistance	57,000	56,600	54,500	400	0.7%	2,500	4.6%
Leisure & Hospitality	271,300	270,400	266,300	900	0.3%	5,000	1.9%
Casino Hotels and Gaming	175,800	175,800	176,500	0	0.0%	-700	-0.4%
Food Services and Drinking Places	73,700	72,900	69,300	800	1.1%	4,400	6.3%
Other Services	25,600	25,300	23,900	300	1.2%	1,700	7.1%
Government	97,500	93,500	91,900	4,000	4.3%	5,600	6.1%

## Size Class of Industries - Sep 2006 (Non-Government Worksites)

Size Class	Employees Per Worksite	Number of Worksites	Employment in Size Class	% of Total Employment
9	1000+	85	193,592	23.4%
8	500-999	93	62,840	7.6%
7	250-499	198	68,665	8.3%
6	100-249	799	121,536	14.7%
5	50-99	1,436	99,552	12.0%
4	20-49	4,001	121,529	14.7%
3	10-19	5,532	75,147	9.1%
2	5-9	7,517	50,304	6.1%
1	0-4	17,985	35,200	4.2%
<b>Total</b>		<b>37,646</b>	<b>828,365</b>	<b>100.0%</b>

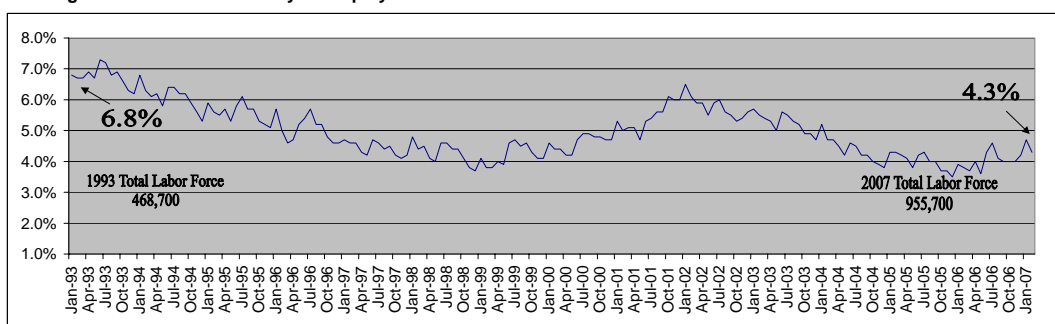
## Largest Private Employers - Sep 2006

Employer	Employees	Industry
BELLAGIO, LLC	9000-9499	Casino Hotels
WYNN LAS VEGAS, LLC	8500-8999	Casino Hotels
MGM GRAND HOTEL/CASINO	8500-8999	Casino Hotels
MANDALAY BAY RESORT AND CASINO	7500-7999	Casino Hotels
VENETIAN RESORTS LLC	5500-5999	Casino Hotels
CAESARS PALACE	5500-5999	Casino Hotels
MIRAGE CASINO-HOTEL	5500-5999	Casino Hotels
RIO SUITE HOTEL & CASINO	4000-4499	Casino Hotels
FLAMINGO HILTON	4000-4499	Casino Hotels
LUXOR	3500-3999	Casino Hotels
HARRAH'S LAS VEGAS	3500-3999	Casino Hotels
BALLY'S & PARIS CASINO HOTELS	3500-3999	Casino Hotels
TREASURE ISLAND AT THE MIRAGE	3500-3999	Casino Hotels
EXCALIBUR HOTEL & CASINO	3000-3499	Casino Hotels
CIRCUS CIRCUS CASINOS INC.	3000-3499	Casino Hotels

## Labor Force and Unemployment

	FEB 2007	JAN 2007	FEB 2006	Monthly Change		Annual Change	
				Total	%	Total	%
Total Labor Force	955,700	950,500	898,700	5,200	6.3%	57,000	6.3%
Unemployment	41,300	44,700	34,000	-3,400	-7.6%	7,300	21.5%
<b>Unemployment Rate</b>	<b>4.3%</b>	<b>4.7%</b>	<b>3.8%</b>	*	*	*	*
Total Employment	914,400	905,800	864,700	8,600	0.9%	49,700	5.7%

## Las Vegas-Paradise MSA Monthly Unemployment Rates 1993 to Current



## 2006 Avg Wages By Industry-OES Survey Data

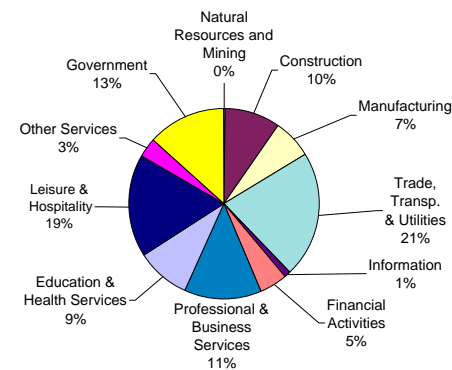
Industry	Avg. Hourly Wage
<b>Total All Industries</b>	<b>\$16.92</b>
Natural Resources and Mining	\$19.75
Construction	\$20.71
Manufacturing	\$17.89
Trade, Transportation & Utilities	\$15.46
Information	\$23.76
Financial Activities	\$19.75
Professional & Business Services	\$19.40
Education & Health Services	\$19.79
Leisure & Hospitality	\$12.11
Other Services	\$14.70
Government	\$24.63

Employment data for current month is preliminary and previous month has been revised. All data subject to annual benchmark revisions.

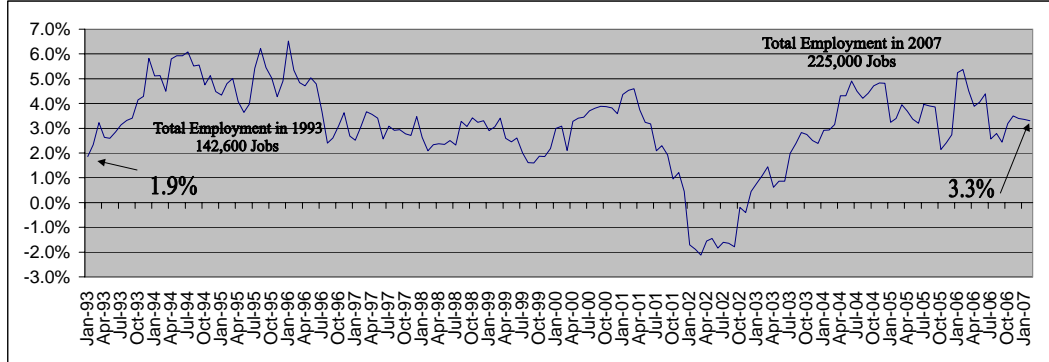
\*MSA = Metropolitan Statistical Area / Las Vegas-Paradise MSA = Clark County



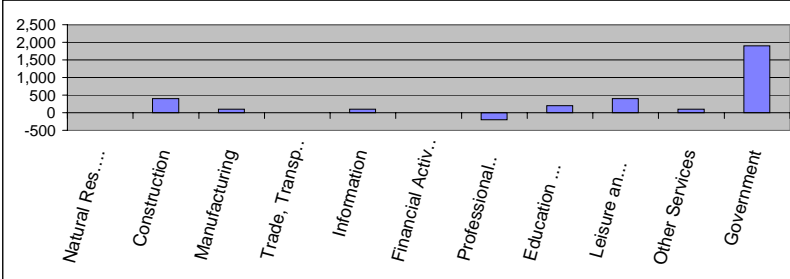
## Reno-Sparks MSA Industry Composition



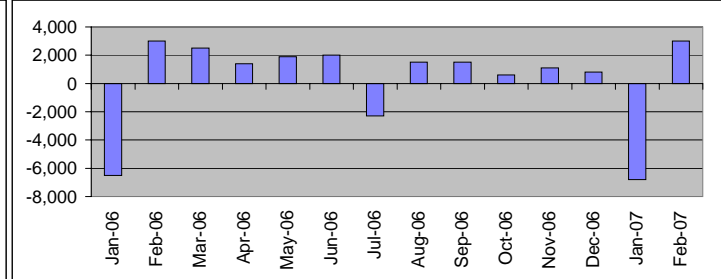
## Annual Job Growth Rate for Total NonAgricultural Employment



## Monthly Change by Industry



## Monthly Change In Total Non-Ag. Employment



## Reno-Sparks MSA Employment By Industry

	FEB 2007	JAN 2007	FEB 2006	Monthly Change		Annual Change	
				Total	%	Total	%
<b>Total All Industries</b>	<b>225,000</b>	<b>222,000</b>	<b>217,800</b>	<b>3,000</b>	<b>1.4%</b>	<b>7,200</b>	<b>3.3%</b>
Natural Resources and Mining	400	400	400	0	0.0%	0	0.0%
Construction	21,700	21,300	22,800	400	1.9%	-1,100	-4.8%
Manufacturing	14,700	14,600	14,100	100	0.7%	600	4.3%
Trade, Transportation & Utilities	48,100	48,100	45,800	0	0.0%	2,300	5.0%
Wholesale	11,000	11,000	10,800	0	0.0%	200	1.9%
Retail	24,800	24,800	23,500	0	0.0%	1,300	5.5%
Trans, Warehousing and Utilities	12,300	12,300	11,500	0	0.0%	800	7.0%
Information	2,800	2,700	2,800	100	3.7%	0	0.0%
Financial Activities	10,600	10,600	10,700	0	0.0%	-100	-0.9%
Finance and Insurance	6,600	6,500	6,700	100	1.5%	-100	-1.5%
Professional & Business Services	29,400	29,600	27,100	-200	-0.7%	2,300	8.5%
Education & Health Services	20,200	20,000	19,700	200	1.0%	500	2.5%
Leisure & Hospitality	39,900	39,500	38,400	400	1.0%	1,500	3.9%
Casino Hotels	18,900	18,800	18,900	100	0.5%	0	0.0%
Food Services and Drinking Places	13,700	13,500	12,300	200	1.5%	1,400	11.4%
Other Services	7,300	7,200	7,000	100	1.4%	300	4.3%
Government	29,900	28,000	29,000	1,900	6.8%	900	3.1%

## Size Class of Industries - Sep 2006 (Non-Government Worksites)

Size Class	Employees Per Worksite	Number of Worksites	Employment in Size Class	% of Total Employment
9	1000+	15	25,954	13.4%
8	500-999	14	8,731	4.5%
7	250-499	42	14,214	7.3%
6	100-249	200	29,971	15.5%
5	50-99	408	28,117	14.5%
4	20-49	1,167	35,168	18.1%
3	10-19	1,811	24,678	12.7%
2	5-9	2,324	15,327	7.9%
1	0-4	5,827	11,642	6.0%
<b>Total</b>		<b>11,808</b>	<b>193,802</b>	<b>100.0%</b>

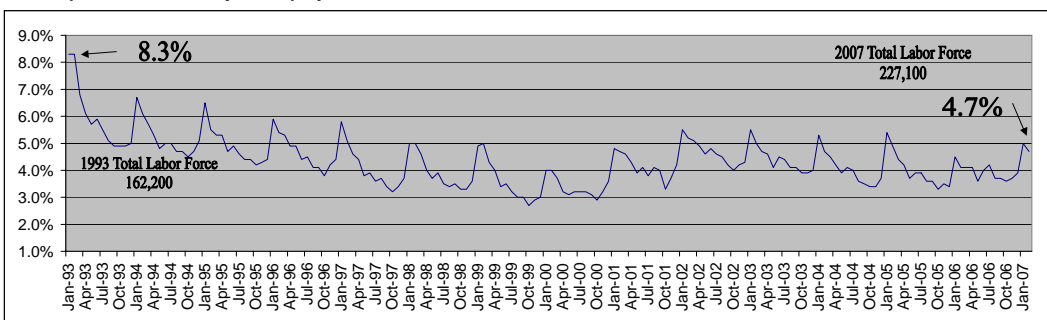
## Largest Private Employers - Sep 2006

Employer	Employees	Industry
INTERNATIONAL GAME TECHNOLOGY	2500-2999	Misc. Manufac.
RENONW REGIONAL MEDICAL CENTER	2500-2999	Hospitals
SILVER LEGACY RESORT CASINO	2000-2499	Casino Hotels
PEPPERMILL HOTEL CASINO - RENO	2000-2499	Casino Hotels
ATLANTIS CASINO RESORT	1500-1999	Casino Hotels
ELDORADO HOTEL & CASINO	1500-1999	Casino Hotels
GRAND SIERRA RESORT AND CASINO	1500-1999	Casino Hotels
CIRCUS CIRCUS CASINOS, INC.	1500-1999	Casino Hotels
ST. MARY'S	1500-1999	Hospitals
SPARKS NUGGET, INC.	1500-1999	Casino Hotels
HIRE DYNAMICS, LLC	1500-1999	Temporary Help
HARRAHS RENO	1500-1999	Casino Hotels
Q&D CONSTRUCTION	1000-1499	Commercial Bldg
INTEGRITY STAFFING SOLUTIONS	1000-1499	Temporary Help
UNITED PARCEL SERVICE	1000-1499	Couriers

## Labor Force and Unemployment

	FEB 2007	JAN 2007	FEB 2006	Monthly Change		Annual Change	
				Total	%	Total	%
Total Labor Force	227,100	225,000	215,600	2,100	0.9%	11,500	5.3%
Unemployment	10,800	11,300	8,900	-500	-4.4%	1,900	21.3%
<b>Unemployment Rate</b>	<b>4.7%</b>	<b>5.0%</b>	<b>4.1%</b>	*	*	*	*
Total Employment	216,300	213,700	206,700	2,600	1.2%	9,600	4.6%

## Reno-Sparks MSA Monthly Unemployment Rates 1993 to Current



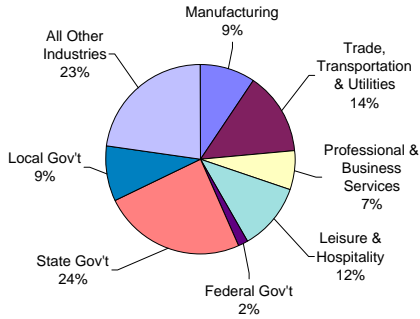
## 2006 Avg Wages By Industry-OES Survey Data

Industry	Avg. Hourly Wage
<b>Total All Industries</b>	<b>\$17.65</b>
Natural Resources and Mining	\$18.83
Construction	\$20.19
Manufacturing	\$18.92
Trade, Transportation & Utilities	\$16.46
Information	\$19.69
Financial Activities	\$20.77
Professional & Business Services	\$17.64
Education & Health Services	\$21.98
Leisure & Hospitality	\$10.21
Other Services	\$16.54
Government	\$23.32

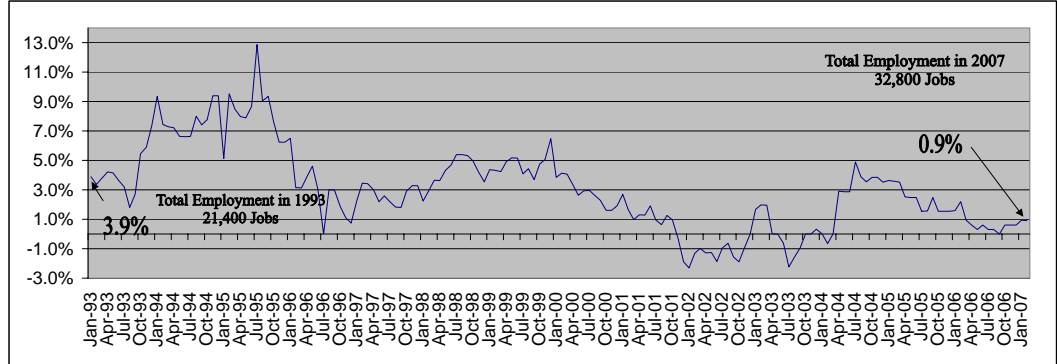
Employment data for current month is preliminary and previous month has been revised. All data subject to annual benchmark revisions.

\*MSA = Metropolitan Statistical Area / Reno-Sparks MSA = Washoe County and Storey County

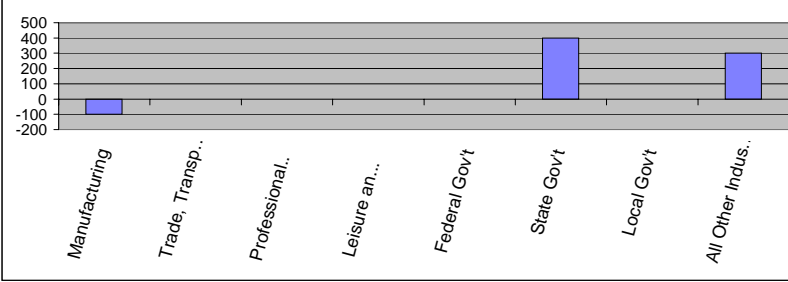
## Carson City MSA Industry Composition



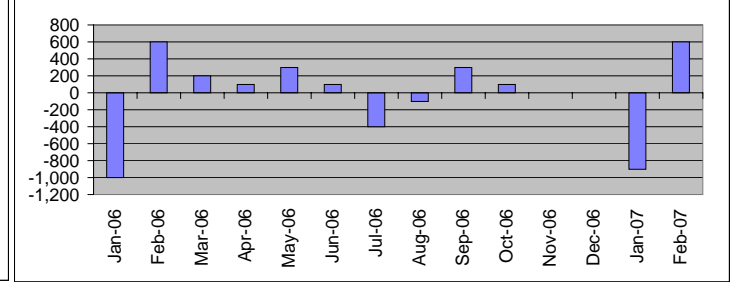
## Annual Job Growth Rate for Total NonAgricultural Employment



## Monthly Change by Industry



## Monthly Change In Total Non-Ag. Employment



## Carson City MSA Employment By Industry

	FEB 2007	JAN 2007	FEB 2006	Monthly Change		Annual Change	
				Total	%	Total	%
<b>Total All Industries</b>	<b>32,800</b>	<b>32,200</b>	<b>32,500</b>	<b>600</b>	<b>1.9%</b>	<b>300</b>	<b>0.9%</b>
<b>Goods Producing</b>	<b>5,300</b>	<b>5,200</b>	<b>5,300</b>	<b>100</b>	<b>1.9%</b>	<b>0</b>	<b>0.0%</b>
<b>Manufacturing</b>	<b>3,100</b>	<b>3,200</b>	<b>3,100</b>	<b>-100</b>	<b>-3.1%</b>	<b>0</b>	<b>0.0%</b>
<b>Services Producing</b>	<b>27,500</b>	<b>27,000</b>	<b>27,200</b>	<b>500</b>	<b>1.9%</b>	<b>300</b>	<b>1.1%</b>
<b>Private Services Producing</b>	<b>15,900</b>	<b>15,800</b>	<b>16,200</b>	<b>100</b>	<b>0.6%</b>	<b>-300</b>	<b>-1.9%</b>
<b>Trade, Transportation &amp; Utilities</b>	<b>4,600</b>	<b>4,600</b>	<b>4,700</b>	<b>0</b>	<b>0.0%</b>	<b>-100</b>	<b>-2.1%</b>
Retail	<b>3,400</b>	<b>3,500</b>	<b>3,600</b>	<b>-100</b>	<b>-2.9%</b>	<b>-200</b>	<b>-5.6%</b>
<b>Professional &amp; Business Services</b>	<b>2,200</b>	<b>2,200</b>	<b>2,400</b>	<b>0</b>	<b>0.0%</b>	<b>-200</b>	<b>-8.3%</b>
<b>Leisure &amp; Hospitality</b>	<b>3,800</b>	<b>3,800</b>	<b>4,000</b>	<b>0</b>	<b>0.0%</b>	<b>-200</b>	<b>-5.0%</b>
<b>Government</b>	<b>11,600</b>	<b>11,200</b>	<b>11,000</b>	<b>400</b>	<b>3.6%</b>	<b>600</b>	<b>5.5%</b>
Federal	<b>500</b>	<b>500</b>	<b>500</b>	<b>0</b>	<b>0.0%</b>	<b>0</b>	<b>0.0%</b>
State	<b>8,000</b>	<b>7,600</b>	<b>7,400</b>	<b>400</b>	<b>5.3%</b>	<b>600</b>	<b>8.1%</b>
Local	<b>3,100</b>	<b>3,100</b>	<b>3,100</b>	<b>0</b>	<b>0.0%</b>	<b>0</b>	<b>0.0%</b>

## Size Class of Industries - Sep 2006 (Non-Government Worksites)

Size Class	Employees Per Worksite	Number of Worksites	Employment in Size Class	% of Total Employment
9	1000+	0	0	0.0%
8	500-999	0	0	0.0%
7	250-499	5	1,910	8.9%
6	100-249	20	3,082	14.4%
5	50-99	51	3,462	16.1%
4	20-49	163	4,910	22.9%
3	10-19	254	3,390	15.8%
2	5-9	393	2,612	12.2%
1	0-4	992	2,078	9.7%
<b>Total</b>		<b>1,878</b>	<b>21,444</b>	<b>100.0%</b>

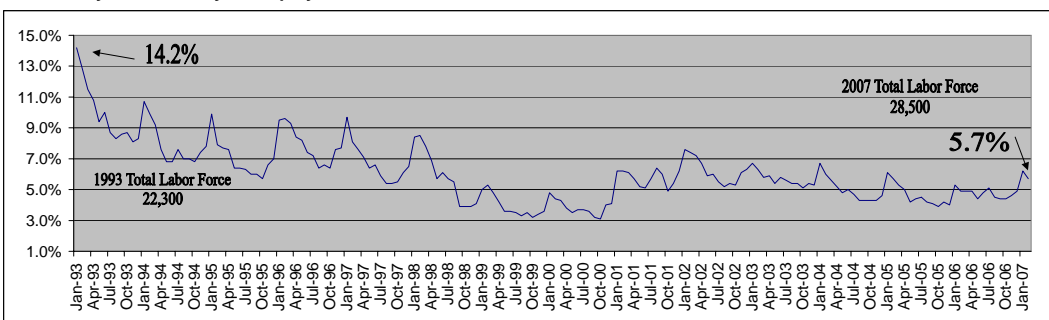
## Largest Private Employers - Sep 2006

Employer	Employees	Industry
CARSON CITY NUGGET	400-499	Casinos
CASINO FANDANGO	400-499	Casinos
CHROMALLOY NEVADA	400-499	Aircraft Engines
WAL-MART SUPERCENTER	300-399	Warehouse Clubs
GOLD DUST WEST CARSON CITY	200-299	Casino Hotels
PCC STRUCTURALS - CARSON	200-299	Steel Foundries
HARLEY-DAVIDSON CREDIT CORP	200-299	Sales Financing
COSTCO WHOLESALE CORP.	200-299	Warehouse Clubs
MISSION INDUSTRIES	200-299	Linen Supply
CARSON STATION HOTEL CASINO	200-299	Casinos
CLICK BOND, INC.	100-199	Bolts, Nuts Mfg.
LOWES HOME IMPROVEMENT	100-199	Home Centers
SLOTWORLD INC	100-199	Casinos
NEVADA APPEAL	100-199	Newspapers
WESTERN TEMPORARY SERVICES USA	100-199	Temporary Help

## Labor Force and Unemployment

	FEB 2007	JAN 2007	FEB 2006	Monthly Change		Annual Change	
				Total	%	Total	%
Total Labor Force	28,500	28,200	28,000	300	1.1%	500	1.8%
Unemployment	1,600	1,800	1,400	-200	-11.1%	200	14.3%
<b>Unemployment Rate</b>	<b>5.7%</b>	<b>6.2%</b>	<b>4.9%</b>	*	*	*	*
Total Employment	26,900	26,400	26,600	500	1.9%	300	1.1%

## Carson City MSA Monthly Unemployment Rates 1993 to Current



## 2006 Avg Wages By Industry-OES Survey Data

Industry	Avg. Hourly Wage
<b>Total All Industries</b>	<b>\$18.25</b>
Natural Resources and Mining	N/A
Construction	\$19.19
Manufacturing	\$17.62
Trade, Transportation & Utilities	\$16.24
Information	\$17.76
Financial Activities	\$15.77
Professional & Business Services	\$19.01
Education & Health Services	\$19.69
Leisure & Hospitality	\$9.37
Other Services	\$13.80
Government	\$23.64

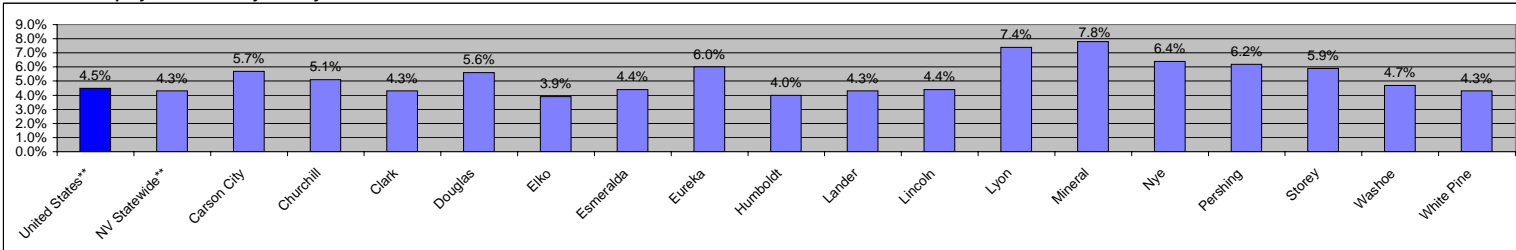
Employment data for current month is preliminary and previous month has been revised. All data subject to annual benchmark revisions.

\*MSA = Metropolitan Statistical Area / Carson City MSA = Carson City

# Nevada County Employment and Unemployment Summary

February 2007

## Current Unemployment Rates By County



## Total Labor Force - February 2007

	Total Labor Force	# of Employed	# of Unemployed	Unemp. Rate
Nevada**	1,334,800	1,274,300	60,500	4.3%
Carson City	28,530	26,900	1,630	5.7%
Churchill	13,020	12,360	660	5.1%
Clark	955,650	914,350	41,300	4.3%
Douglas	22,620	21,350	1,270	5.6%
Elko	25,210	24,220	990	3.9%
Esmeralda	480	460	20	4.4%
Eureka	730	690	40	6.0%
Humboldt	8,100	7,780	320	4.0%
Lander	3,080	2,950	130	4.3%
Lincoln	1,620	1,550	70	4.4%
Lyon	21,940	20,320	1,620	7.4%
Mineral	2,040	1,880	160	7.8%
Nye	17,820	16,680	1,140	6.4%
Pershing	2,400	2,250	150	6.2%
Storey	2,470	2,320	150	5.9%
Washoe	224,570	213,940	10,630	4.7%
White Pine	4,440	4,250	190	4.3%
Elko Micropolitan Area***	25,940	24,910	1,030	4.0%

## Total Labor Force - February 2006

	Total Labor Force	# of Employed	# of Unemployed	Unemp. Rate
Nevada**	1,261,200	1,211,100	50,100	3.8%
Carson City	27,940	26,570	1,370	4.9%
Churchill	12,820	12,220	600	4.7%
Clark	898,660	864,700	33,960	3.8%
Douglas	22,250	21,200	1,050	4.7%
Elko	23,840	22,830	1,010	4.2%
Esmeralda	450	430	20	5.1%
Eureka	690	660	30	4.9%
Humboldt	7,820	7,490	330	4.3%
Lander	2,830	2,690	140	4.9%
Lincoln	1,510	1,430	80	5.2%
Lyon	21,000	19,750	1,250	5.9%
Mineral	2,140	1,990	150	7.1%
Nye	16,950	16,110	840	5.0%
Pershing	2,400	2,250	150	6.3%
Storey	2,190	2,080	110	4.8%
Washoe	213,450	204,610	8,840	4.1%
White Pine	4,250	4,050	200	4.7%
Elko Micropolitan Area***	24,530	23,490	1,040	4.2%

## Labor Force Change (February 2006 to February 2007)

	Change In Total Labor Force		Change In Number of Employed		Change In Number of Unemployed	
	Number	Percent	Number	Percent	Number	Percent
Nevada**	73,600	5.8%	63,200	5.2%	10,400	20.8%
Carson City	590	2.1%	330	1.2%	260	19.0%
Churchill	200	1.6%	140	1.1%	60	10.0%
Clark	56,990	6.3%	49,650	5.7%	7,340	21.6%
Douglas	370	1.7%	150	0.7%	220	21.0%
Elko	1,370	5.7%	1,390	6.1%	-20	-2.0%
Esmeralda	30	6.7%	30	7.0%	0	0.0%
Eureka	40	5.8%	30	4.5%	10	33.3%
Humboldt	280	3.6%	290	3.9%	-10	-3.0%
Lander	250	8.8%	260	9.7%	-10	-7.1%
Lincoln	110	7.3%	120	8.4%	-10	-12.5%
Lyon	940	4.5%	570	2.9%	370	29.6%
Mineral	-100	-4.7%	-110	-5.5%	10	6.7%
Nye	870	5.1%	570	3.5%	300	35.7%
Pershing	0	0.0%	0	0.0%	0	0.0%
Storey	280	12.8%	240	11.5%	40	36.4%
Washoe	11,120	5.2%	9,330	4.6%	1,790	20.2%
White Pine	190	4.5%	200	4.9%	-10	-5.0%
Elko Micropolitan Area***	1,410	5.7%	1,420	6.0%	-10	-1.0%

## Employment by Area - 3rd Quarter 2006 (Jul-Sep) Average

	3rd Qtr 2006	3rd Qtr 2005	Total Change	% Change
Nevada	1,278,258	1,227,956	50,302	4.1%
Carson City	31,648	32,115	-467	-1.5%
Churchill	8,776	8,679	97	1.1%
Clark	914,772	872,158	42,614	4.9%
Douglas	22,314	22,227	87	0.4%
Elko	21,051	20,509	542	2.6%
Esmeralda	234	230	4	1.7%
Eureka	4,386	3,907	479	12.3%
Humboldt	7,824	7,736	88	1.1%
Lander	2,048	2,107	-59	-2.8%
Lincoln	1,351	1,265	86	6.8%
Lyon	13,057	12,478	579	4.6%
Mineral	1,693	1,723	-30	-1.7%
Nye	12,742	12,138	604	5.0%
Pershing	1,887	1,891	-4	-0.2%
Storey	2,403	1,387	1,016	73.3%
Washoe	220,285	215,351	4,934	2.3%
White Pine	4,012	3,909	103	2.6%

## Employment By Industry - 3rd Quarter 2006 (Jul-Sep) Average

	Nat. Resources & Mining	Const	Manuf	Trade, Transp. & Utilities	Information	Financial Activities	Profess. & Bus. Svcs	Education & Health Svcs	Leisure and Hospitality	Other Services	Gov't
Nevada	14,353	146,149	51,094	225,847	15,485	66,175	158,283	87,248	341,614	29,134	141,737
Carson City	*	2,180	3,165	4,601	297	1,558	2,482	2,289	3,983	910	10,158
Churchill	293	780	493	1,918	128	337	952	827	1,093	150	1,804
Clark	542	110,474	27,412	155,854	11,351	50,854	114,785	59,818	274,472	20,691	87,828
Douglas	180	2,164	1,810	2,782	234	812	1,739	1,112	8,852	380	2,232
Elko	2,536	1,528	217	3,649	193	526	950	1,093	6,146	537	3,667
Esmeralda	75	19	*	18	*	0	12	0	*	*	96
Eureka	3,754	*	*	55	*	*	8	*	43	9	196
Humboldt	2,159	390	322	1,512	92	114	372	273	1,181	143	1,259
Lander	714	18	*	445	*	21	46	35	212	5	506
Lincoln	32	39	*	214	21	50	*	27	86	6	637
Lyon	793	1,494	2,448	2,613	23	267	741	648	1,634	307	2,072
Mineral	23	23	8	140	*	36	*	103	251	7	594
Nye	1,204	1,215	354	1,806	90	324	2,823	799	2,143	219	1,743
Pershing	562	29	42	193	10	27	17	39	183	48	737
Storey	84	154	406	1,141	*	19	77	8	172	142	198
Washoe	546	24,355	14,301	46,108	2,750	10,695	29,040	19,884	40,536	5,376	26,535
White Pine	765	172	33	552	33	95	129	142	544	80	1,467

## Hours and Earnings

	Production Workers (in 000's)			Average Weekly Earnings			Average Weekly Hours			Average Hourly Earnings		
	FEB 2007	FEB 2006	JAN 2007	FEB 2007	FEB 2006	JAN 2007	FEB 2007	FEB 2006	JAN 2007	FEB 2007	FEB 2006	JAN 2007
Nevada	110,800	110,900	109,100	\$835.62	\$794.61	\$839.42	38.0	36.3	38.0	\$21.99	\$21.89	\$22.09
Construction	37,200	36,600	36,900	\$608.38	\$600.15	\$609.96	39.2	39.2	39.1	\$15.52	\$15.31	\$15.60
Manufacturing	25,300	25,400	25,300	\$615.37	\$608.79	\$616.53	38.8	38.9	38.8	\$15.86	\$15.65	\$15.89
Durable Goods	11,900	11,200	11,600	\$591.32	\$579.89	\$595.10	39.9	39.8	39.7	\$14.82	\$14.57	\$14.99
Non-durable Goods	32,800	31,300	32,700	\$599.76	\$585.87	\$599.50	35.7	35.4	35.6	\$16.80	\$16.55	\$16.84
Wholesale Trade	121,400	114,300	121,300	\$438.26	\$430.00	\$436.63	34.0	34.1	33.9	\$12.89	\$12.61	\$12.88
Retail Trade	86,100	85,800	84,600	\$893.20	\$865.73	\$885.50	38.5	37.3	38.3	\$23.20	\$23.21	\$23.12
Las Vegas-Paradise MSA	19,600	20,600	20,200	\$593.29	\$588.39	\$594.61	39.5	39.2	39.3	\$15.02	\$15.01	\$15.13
Manufacturing	17,800	18,800	19,800	\$652.21	\$622.80	\$652.43	37.7	37.7	37.8	\$17.30	\$16.52	\$17.26
Wholesale Trade	87,200	82,900	87,000	\$445.90	\$452.44	\$447.03	34.3	35.1	34.6	\$13.00	\$12.89	\$12.92
Retail Trade												

## Seasonally Adjusted Employment (Statewide Only)

Employment In Thousands	Jan-06	Feb-06	Mar-06	Apr-06	May-06	Jun-06	Jul-06	Aug-06	Sep-06	Oct-06	Nov-06	Dec-06	Jan-07	Feb-07
Total All Industries	1262.1	1270.0	1273.1	1275.6	1279.8	1284.7	1282.0	1283.4	1285.7	1288.0	1293.7	1300.1	1302.2	1310.2
Natural Resources and Mining	11.2	11.2	11.3	11.4	11.5	11.6	11.5	11.6	11.6	11.9	11.9	11.9	11.8	12.0
Construction	144.0	146.1	145.3	145.2	145.6	145.4	143.2	142.5	141.4	141.5	142.1	142.3	141.5	142.8
Manufacturing	49.0	49.4	49.8	50.1	50.4	50.7	50.7	50.6	51.0	51.1	51.2	51.3	51.8	51.8
Trade, Transportation & Utilities	223.0	224.1	225.8	225.3	226.1	226.3	226.1	227.0	227.3	227.1	227.8	228.8	232.1	233.2
Retail	135.7	136.6	137.8	137.2	137.4	137.2	136.9	137.2	137.2	137.1	137.4	137.8	140.2	141.3
Information	14.8	15.2	14.7	15.0	15.1	15.1	15.6	15.7	15.2	15.7	15.4	15.6	15.4	15.2
Financial Activities	64.8	64.8	65.1	65.2	65.5	65.7	65.8	65.9	66.0	66.3	66.5	66.8	66.4	66.7
Professional & Business Services	154.0	155.3	156.6	156.6	157.5	158.7	158.1	158.2	158.5	157.5	159.7	162.4	162.2	164.5
Education & Health Services	85.7	86.1	86.4	86.2	86.6	87.2	87.3	87.8	88.4	88.7	88.9	89.5	89.5	90.0
Leisure & Hospitality	333.6	334.9	335.2	335.8	336.4	338.3	337.3	336.8	338.3	338.6	339.6	340.4	341.0	341.9
Casino Hotels and Gaming	217.1	218.1	217.1	216.6	216.7	217.4	217.0	217.0	216.9	216.6	216.7	216.3	217.1	217.0
Other Services	35.0	35.0	35.2	35.6	36.0	36.0	36.0	36.4	36.7	37.3	37.6	38.0	36.7	36.9
Government	147.0	147.9	147.7	149.2	149.1	149.7	150.4	150.9	151.3	152.3	153.0	153.1	153.8	155.2

Employment data for current month is preliminary and previous month has been revised. All data subject to annual benchmark revisions.

\* Indicates Data Suppressed Due To Confidentiality. \*\*The United States and Nevada statewide unemployment rates are seasonally adjusted.

\*\*\* Elko Micropolitan Statistical Area = Elko and Eureka Counties

State of Nevada  
Department of Employment, Training & Rehabilitation  
Research & Analysis Bureau  
500 E. Third Street  
Carson City, NV 89713-0001

# Nevada Economy In Brief

The Nevada Economy in Brief provides a wealth of Nevada workforce and economic information and is published monthly by the Nevada Department of Employment, Training and Rehabilitation / Research and Analysis Bureau. Material contained in this publication is produced in cooperation with the U.S. Department of Labor (Bureau of Labor Statistics and the Employment and Training Administration) and may be reproduced without permission. Please credit Nevada Department of Employment, Training and Rehabilitation. For additional workforce or other economic information, a free subscription to the Nevada Economy in Brief, or to change your mailing address, please contact the Research and Analysis Bureau.

Phone (775) 684-0450  
Fax (775) 684-0342  
E-mail [detrlmi@nvdetr.org](mailto:detrlmi@nvdetr.org)

Websites  
[www.nevadaworkforce.com](http://www.nevadaworkforce.com)  
[www.nevadajobconnect.com](http://www.nevadajobconnect.com)  
[www.nvdetr.org](http://www.nvdetr.org)

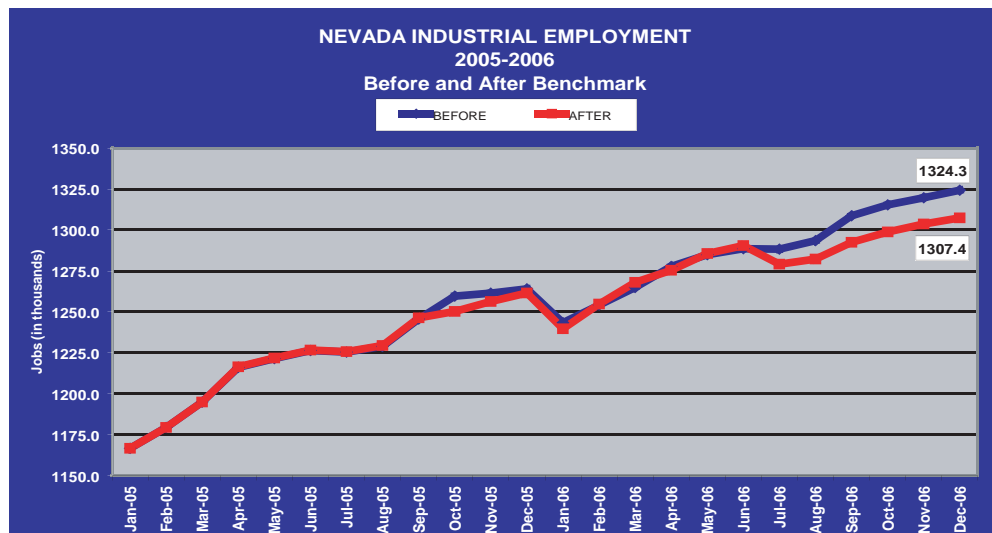




# Nevada Economy In Brief

## January 2007

Each year at this time, industrial employment estimates for the previous two years are revised (benchmarked) using methods established by the U.S. Department of Labor's Bureau of Labor Statistics. The original estimates are derived from the monthly Current Employment Statistics survey of approximately 2,500 Nevada employers. The modified figures are based on actual employment data collected each quarter from more than 60,000 Nevada employers covered by



### Economic Indicators

#### UNEMPLOYMENT RATES JAN 2007

NEVADA (SA)*	4.5%
LAS VEGAS-PARADISE MSA	4.7%
RENO-SPARKS MSA	5.0%
CARSON CITY MSA	6.2%
ELKO MICROPOLITAN AREA	4.3%
UNITED STATES (SA)*	4.6%
CALIFORNIA (SA)*	4.8%

\*(SA) - Seasonally Adjusted

#### JOB GROWTH (LAST 12 MONTHS)

NEVADA	3.7%
LAS VEGAS-PARADISE MSA	3.8%
RENO-SPARKS MSA	3.5%
CARSON CITY MSA	0.9%
UNITED STATES	1.6%
CALIFORNIA	1.7%

#### CONSUMER PRICE INDEX (1yr %Chg)

UNITED STATES	2.1%
---------------	------

#### GROSS GAMING WIN (% CHANGE)

##### DEC 2005 - DEC 2006

NEVADA	17.1%
CLARK COUNTY	19.1%
WASHOE COUNTY	3.5%

#### TAXABLE SALES (% CHANGE)

##### DEC 2005 - DEC 2006

NEVADA	0.9%
CLARK COUNTY	-0.8%
WASHOE COUNTY	0.9%

	Before Benchmark	After Benchmark	Total Benchmark Revision
<b>Nevada Statewide</b>			
2005 Avg Employment	1,224,200	1,223,000	-1,200
2006 Avg Employment	1,288,600	1,281,500	-7,100
2006 Avg Employment Growth	64,400	58,500	-5,900
2006 Annual Job Growth Rate	5.3%	4.8%	
Dec 2006 Total Employment	1,324,300	1,307,400	-16,900

unemployment insurance laws. Labor force and unemployment data also are modified annually, but those revisions will not be available for several weeks.

Employment estimates for 2005 and the first half of 2006 proved to be quite accurate, but the housing slowdown in the second half of 2006 had a greater impact on employment than the monthly surveys captured. Consequently, statewide job growth averaged 4.8 percent in 2006, down from the 5.3 percent employment increase estimated previously. The state added 45,900 jobs between December 2005 and December 2006. The Las Vegas-Paradise MSA recorded average job growth of 5.4 percent last year, while the

(Continued on Page 2.....)

### In This Issue

Nevada Economy In Brief.....	1&2
Benchmark Effects by Industry.....	2
Employment/Unemployment Data Nevada Statewide.....	3
Las Vegas-Paradise MSA.....	4
Reno-Sparks MSA.....	5
Carson City MSA.....	6
Nevada County Summary.....	7
Contact Information.....	8

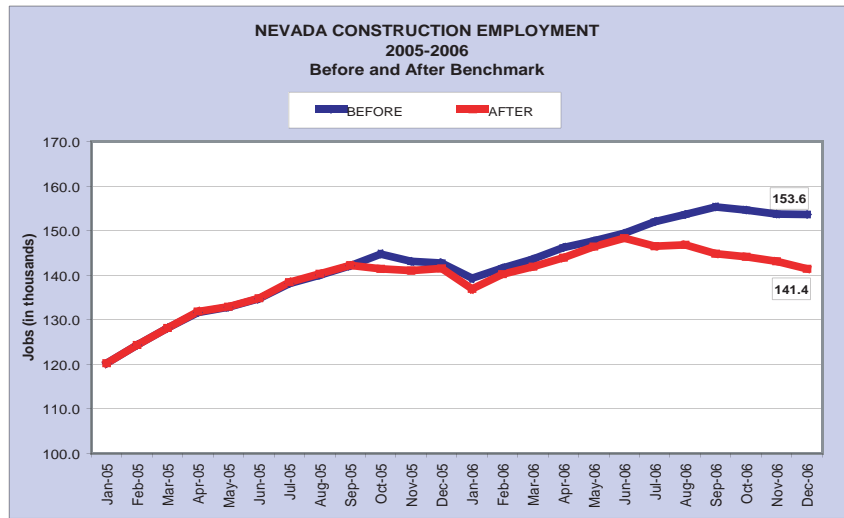
(Note: Data for February 2007 will be released on March 27, 2007. Release of Jan/Feb data occurs later than normal due to our annual benchmark process.)

...(Continued From Page 1)

Reno-Sparks MSA grew at a 3.8 percent pace. Meanwhile, U.S. employment growth averaged 1.9 percent in 2006.

The original employment estimate for December 2006 indicated that there were 1,324,300 jobs in the state. The benchmark revision placed December employment at 1,307,400, a difference of 16,900 jobs. Construction employment was lowered by 12,200, accounting for more than 70 percent of the difference. The revised estimates show that construction employment began to decrease in mid-summer rather than in mid- to late autumn, as is customary.

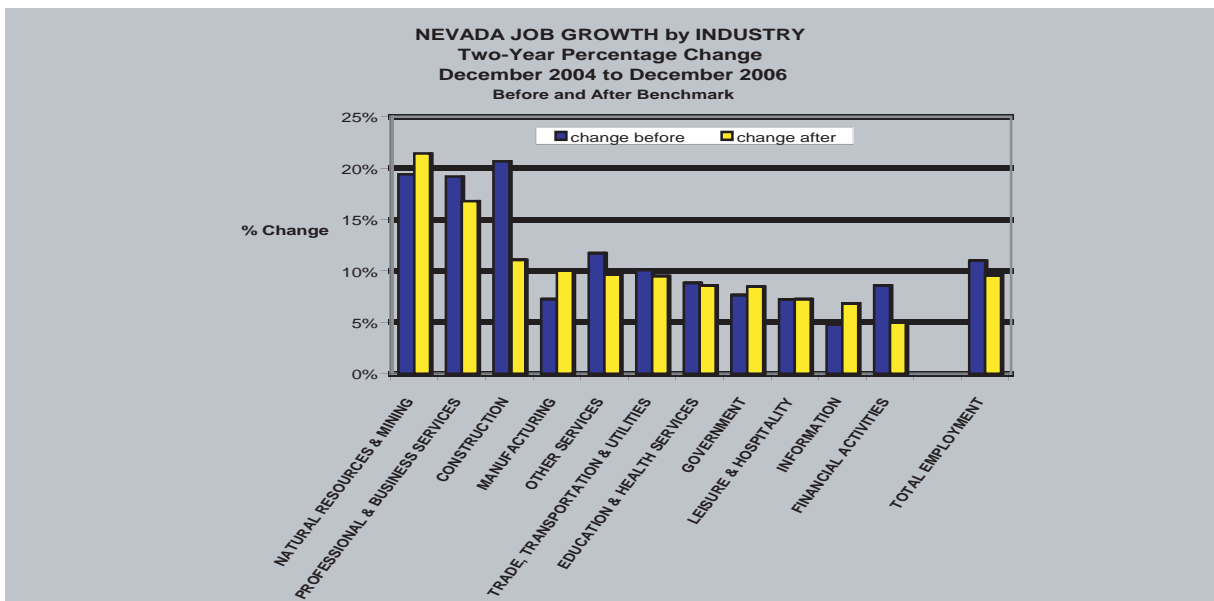
The downward revision to construction employment is consistent with the sharp decline in home sales and building permits reported in the second half of 2006. The other two goods producing industries fared better during the revision process. Manufacturing picked up an additional 1,300 jobs and grew by 10 percent from December 2004 to December 2006, a sharp contrast to the loss of 170,000 manufacturing jobs nationwide over the same period. Metal mining employed an average of 200 more workers than originally estimated in 2006 and grew by 21.4 percent in the past two years.



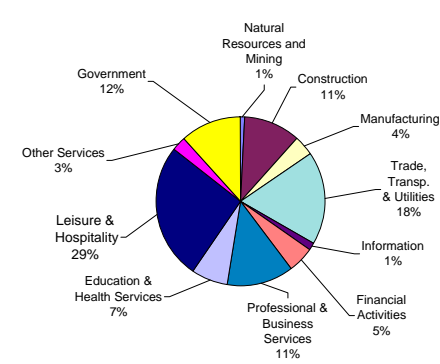
Employment data for January, meanwhile, echoed the usual seasonal trends. Retail employment fell by 5,400 statewide as the holiday shopping season came to an end. The construction industry, reflecting the usual winter lull, lost 4,400 jobs in January. In addition, with the college and university system on winter break, state government employment fell by 5,200 in January. Those three industries accounted for most of the 21,500 jobs lost over the month.

Taken as a whole, two trends are evident in recent months. First, there are signs of moderation in the state's labor markets. Nevada's seasonally adjusted unemployment rate has been inching up of late, rising from 3.6 percent a year ago to the most recent reading of 4.5 percent in January. Similarly, job growth has been easing, falling from a 6.3 percent year-over-year gain in January 2006 to 3.7 percent during the first month of this year. Secondly, the gap between Nevada and the U.S. is narrowing. In 2004 and 2005, Nevada's jobless rate was approximately a full percentage point lower than the national average. That difference declined to 0.5 percentage point in 2006. During January, the state's unemployment rate was just 0.1 percentage point below the nation's. Likewise, in 2005 Nevada's job growth exceeded the national average by 4.4 percentage points. That gap narrowed to 2.9 percentage points in 2006 and to 2.1 percentage points (3.7 percent in Nevada to 1.6 percent in the U.S.) in January of this year.

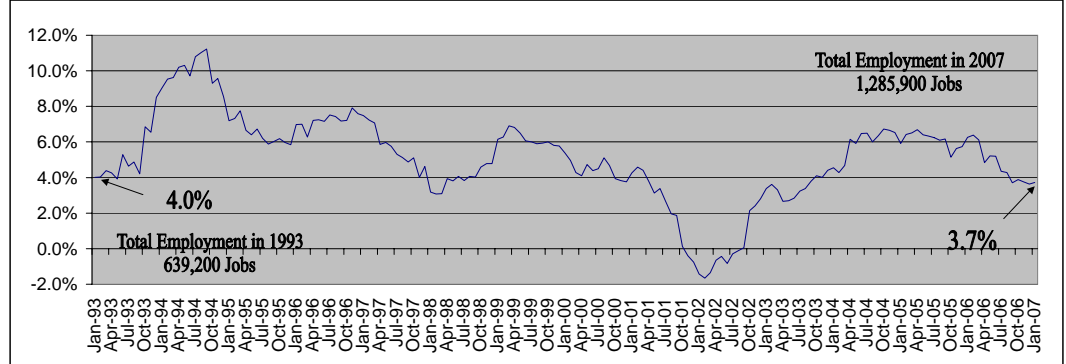
Nevertheless, employment has increased by 46,200 statewide since January 2006, and the Nevada economy remains robust. Although the housing market correction is likely to continue throughout much of 2007, the remainder of the current decade should be marked by impressive growth.



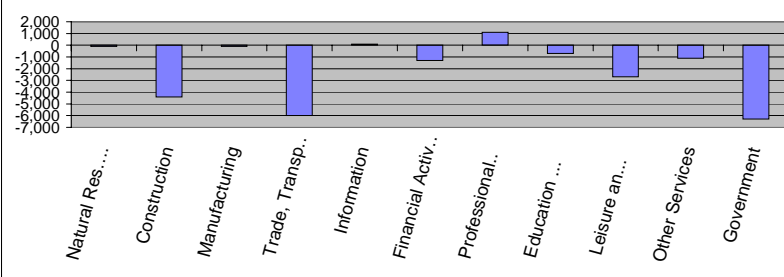
## Nevada Industry Composition



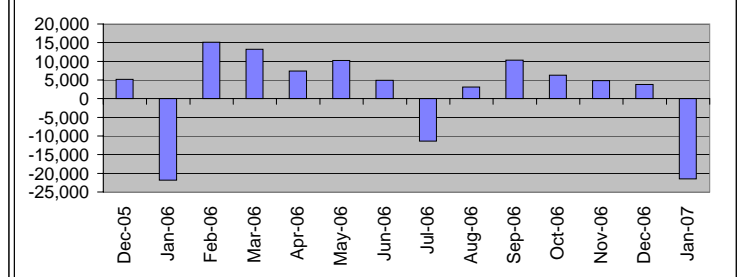
## Annual Job Growth Rate for Total NonAgricultural Employment



## Monthly Change by Industry



## Monthly Change In Total Non-Ag. Employment



## Nevada Employment By Industry

	JAN 2007	DEC 2006	JAN 2006	Monthly Change		Annual Change	
				Total	%	Total	%
<b>Total All Industries</b>	<b>1,285,900</b>	<b>1,307,400</b>	<b>1,239,700</b>	<b>-21,500</b>	<b>-1.6%</b>	<b>46,200</b>	<b>3.7%</b>
Natural Resources and Mining	11,800	11,900	11,000	-100	-0.8%	800	7.3%
Construction	137,000	141,400	136,900	-4,400	-3.1%	100	0.1%
Manufacturing	51,400	51,500	48,400	-100	-0.2%	3,000	6.2%
Trade, Transportation & Utilities	230,100	236,100	220,400	-6,000	-2.5%	9,700	4.4%
Wholesale	39,400	39,600	37,800	-200	-0.5%	1,600	4.2%
Retail	138,900	144,300	134,100	-5,400	-3.7%	4,800	3.6%
Trans, Warehousing and Utilities	51,800	52,200	48,500	-400	-0.8%	3,300	6.8%
Information	15,700	15,600	14,800	100	0.6%	900	6.1%
Financial Activities	65,900	67,200	64,200	-1,300	-1.9%	1,700	2.6%
Finance and Insurance	39,200	40,100	38,600	-900	-2.2%	600	1.6%
Professional & Business Services	162,500	161,400	153,500	1,100	0.7%	9,000	5.9%
Education & Health Services	89,000	89,700	85,000	-700	-0.8%	4,000	4.7%
Health Care and Social Assistance	82,400	82,900	78,900	-500	-0.6%	3,500	4.4%
Leisure & Hospitality	335,300	338,000	327,400	-2,700	-0.8%	7,900	2.4%
Casino Hotels and Gaming	213,500	214,800	213,700	-1,300	-0.6%	-200	-0.1%
Food Services and Drinking Places	93,200	94,000	86,800	-800	-0.9%	6,400	7.4%
Other Services	36,300	37,400	33,900	-1,100	-2.9%	2,400	7.1%
Government	150,900	157,200	144,200	-6,300	-4.0%	6,700	4.6%

## Size Class of Industries - Jun 2006 (Non-Government Worksites)

Size Class	Employees Per Worksite	Number of Worksites	Employment in Size Class	% of Total Employment
9	1000+	100	221,976	19.5%
8	500-999	124	86,085	7.6%
7	250-499	273	94,674	8.3%
6	100-249	1,117	168,564	14.8%
5	50-99	2,068	141,729	12.5%
4	20-49	5,846	175,896	15.5%
3	10-19	8,497	115,234	10.1%
2	5-9	11,716	78,018	6.9%
1	0-4	39,670	55,952	4.9%
<b>Total</b>		<b>69,411</b>	<b>1,138,128</b>	<b>100.0%</b>

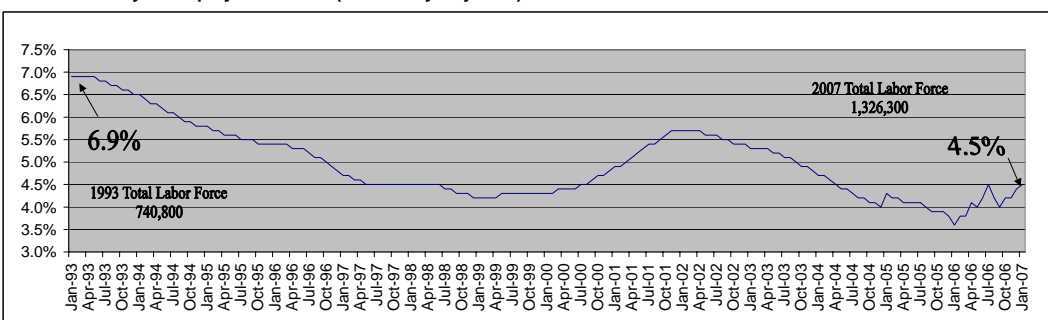
## Nevada's Largest Private Employers - Jun 2006

Employer	Employees	Industry
BELLAGIO, LLC	8500-8999	Casino Hotels
WYNN LAS VEGAS, LLC	8500-8999	Casino Hotels
MGM GRAND HOTEL/CASINO	8500-8999	Casino Hotels
MANDALAY BAY RESORT AND CASINO	7500-7999	Casino Hotels
VENETIAN RESORTS LLC	5500-5999	Casino Hotels
MIRAGE CASINO-HOTEL, THE	5500-5999	Casino Hotels
CAESARS PALACE	5500-5999	Casino Hotels
RIO SUITE HOTEL & CASINO	4500-4999	Casino Hotels
FLAMINGO HILTON	3500-3999	Casino Hotels
LUXOR	3500-3999	Casino Hotels
HARRAH'S LAS VEGAS	3500-3999	Casino Hotels
TREASURE ISLAND AT THE MIRAGE	3000-3499	Casino Hotels
BALLY'S & PARIS CASINO HOTELS	3000-3499	Casino Hotels
EXCALIBUR HOTEL & CASINO	3000-3499	Casino Hotels
RED ROCK STATION RESORT & CASINO	3000-3499	Casino Hotels

## Labor Force and Unemployment

	JAN 2007	DEC 2006	JAN 2006	Monthly Change		Annual Change	
				Total	%	Total	%
Total Labor Force	1,326,300	1,323,700	1,228,000	2,600	0.2%	98,300	8.0%
Unemployment	65,200	56,000	50,700	9,200	16.4%	14,500	28.6%
Unemployment Rate	4.9%	4.2%	4.1%	*	*	*	*
<b>Unemployment Rate (SA)</b>	<b>4.5%</b>	<b>4.4%</b>	<b>3.6%</b>	*	*	*	*
Total Employment	1,261,100	1,267,700	1,177,300	-6,600	-0.5%	83,800	7.1%

## Nevada Monthly Unemployment Rates (Seasonally Adjusted) 1993 to Current

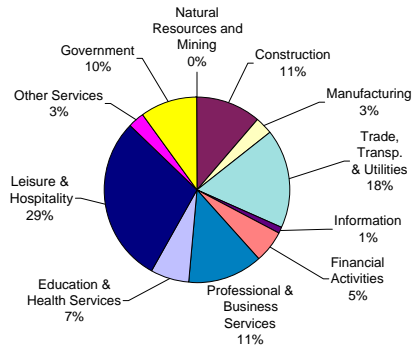


## 2006 Avg Wages By Industry-OES Survey Data

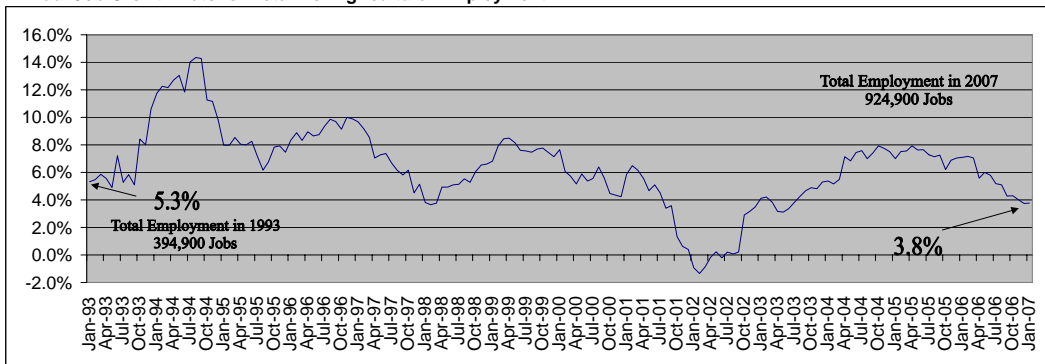
Industry	Avg. Hourly Wage
<b>Total All Industries</b>	<b>\$17.07</b>
Natural Resources and Mining	\$23.31
Construction	\$20.49
Manufacturing	\$18.26
Trade, Transportation & Utilities	\$15.74
Information	\$22.57
Financial Activities	\$19.72
Professional & Business Services	\$19.22
Education & Health Services	\$20.34
Leisure & Hospitality	\$11.77
Other Services	\$15.04
Government	\$23.83

Employment data for current month is preliminary and previous month has been revised. All data subject to annual benchmark revisions.  
Note: The statewide unemployment rate is seasonally adjusted

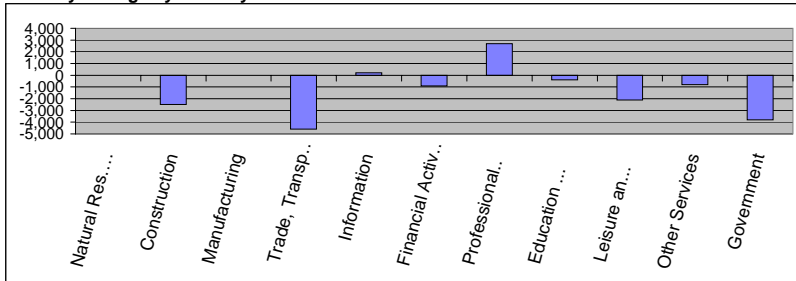
## Las Vegas-Paradise MSA Industry Composition



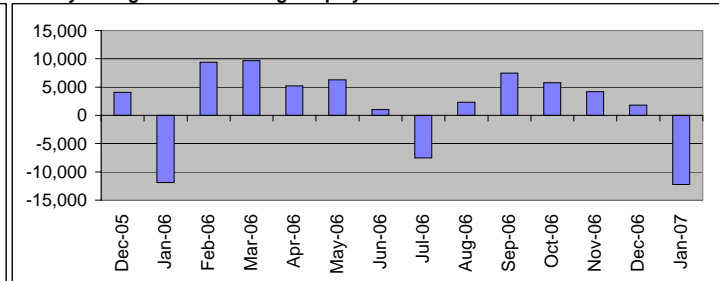
## Annual Job Growth Rate for Total NonAgricultural Employment



## Monthly Change by Industry



## Monthly Change In Total Non-Ag. Employment



## Las Vegas-Paradise MSA Employment By Industry

	JAN 2007	DEC 2006	JAN 2006	Monthly Change		Annual Change	
				Total	%	Total	%
<b>Total All Industries</b>	<b>924,900</b>	<b>937,100</b>	<b>891,400</b>	<b>-12,200</b>	<b>-1.3%</b>	<b>33,500</b>	<b>3.8%</b>
Natural Resources and Mining	400	400	400	0	0.0%	0	0.0%
Construction	105,400	107,900	104,600	-2,500	-2.3%	800	0.8%
Manufacturing	27,700	27,700	25,800	0	0.0%	1,900	7.4%
Trade, Transportation & Utilities	158,600	163,200	152,600	-4,600	-2.8%	6,000	3.9%
Wholesale	24,000	24,100	22,800	-100	-0.4%	1,200	5.3%
Retail	99,100	103,500	96,100	-4,400	-4.3%	3,000	3.1%
Trans, Warehousing and Utilities	35,500	35,600	33,700	-100	-0.3%	1,800	5.3%
Information	11,600	11,400	10,800	200	1.8%	800	7.4%
Financial Activities	51,100	52,000	49,000	-900	-1.7%	2,100	4.3%
Finance and Insurance	30,000	30,600	29,000	-600	-2.0%	1,000	3.4%
Professional & Business Services	119,600	116,900	113,000	2,700	2.3%	6,600	5.8%
Education & Health Services	61,300	61,700	58,500	-400	-0.6%	2,800	4.8%
Health Care and Social Assistance	56,600	56,900	54,000	-300	-0.5%	2,600	4.8%
Leisure & Hospitality	270,400	272,500	264,400	-2,100	-0.8%	6,000	2.3%
Casino Hotels and Gaming	175,800	177,000	175,900	-1,200	-0.7%	-100	-0.1%
Food Services and Drinking Places	72,900	73,300	68,100	-400	-0.5%	4,800	7.0%
Other Services	25,300	26,100	23,700	-800	-3.1%	1,600	6.8%
Government	93,500	97,300	88,600	-3,800	-3.9%	4,900	5.5%

## Size Class of Industries - Jun 2006 (Non-Government Worksites)

Size Class	Employees Per Worksite	Number of Worksites	Employment in Size Class	% of Total Employment
9	1000+	81	189,409	22.9%
8	500-999	98	68,502	8.3%
7	250-499	207	71,252	8.6%
6	100-249	796	120,572	14.6%
5	50-99	1,474	101,093	12.2%
4	20-49	3,940	119,339	14.4%
3	10-19	5,445	73,991	8.9%
2	5-9	7,467	49,976	6.0%
1	0-4	25,104	34,493	4.2%
<b>Total</b>		<b>44,612</b>	<b>828,627</b>	<b>100.0%</b>

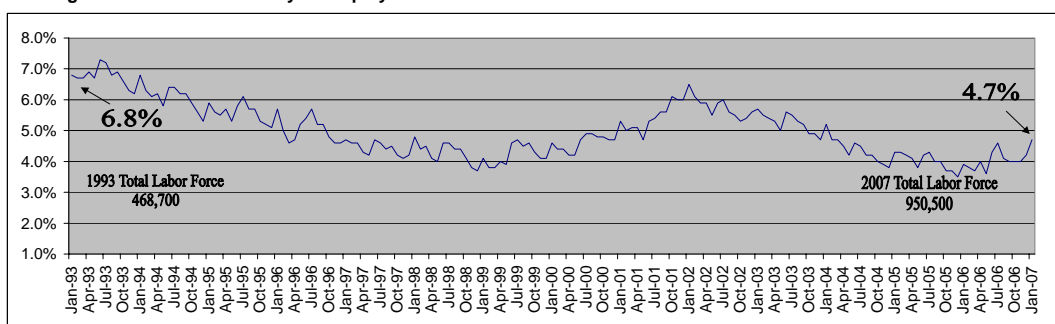
## Largest Private Employers - Jun 2006

Employer	Employees	Industry
BELLAGIO, LLC	8500-8999	Casino Hotels
WYNN LAS VEGAS, LLC	8500-8999	Casino Hotels
MGM GRAND HOTEL/CASINO	8500-8999	Casino Hotels
MANDALAY BAY RESORT AND CASINO	7500-7999	Casino Hotels
VENETIAN RESORTS LLC	5500-5999	Casino Hotels
MIRAGE CASINO-HOTEL, THE	5500-5999	Casino Hotels
CAESARS PALACE	5500-5999	Casino Hotels
RIO SUITE HOTEL & CASINO	4500-4999	Casino Hotels
FLAMINGO HILTON	3500-3999	Casino Hotels
LUXOR	3500-3999	Casino Hotels
HARRAH'S LAS VEGAS	3500-3999	Casino Hotels
TREASURE ISLAND AT THE MIRAGE	3000-3499	Casino Hotels
BALLY'S & PARIS CASINO HOTELS	3000-3499	Casino Hotels
EXCALIBUR HOTEL & CASINO	3000-3499	Casino Hotels
RED ROCK STATION RESORT & CASINO	3000-3499	Casino Hotels

## Labor Force and Unemployment

	JAN 2007	DEC 2006	JAN 2006	Monthly Change		Annual Change	
				Total	%	Total	%
Total Labor Force	950,500	945,300	876,100	5,200	8.5%	74,400	8.5%
Unemployment	44,700	39,700	33,900	5,000	12.6%	10,800	31.9%
<b>Unemployment Rate</b>	<b>4.7%</b>	<b>4.2%</b>	<b>3.9%</b>	*	*	*	*
Total Employment	905,800	905,600	842,200	200	0.0%	63,600	7.6%

## Las Vegas-Paradise MSA Monthly Unemployment Rates 1993 to Current



## 2006 Avg Wages by Industry-OES Survey Data

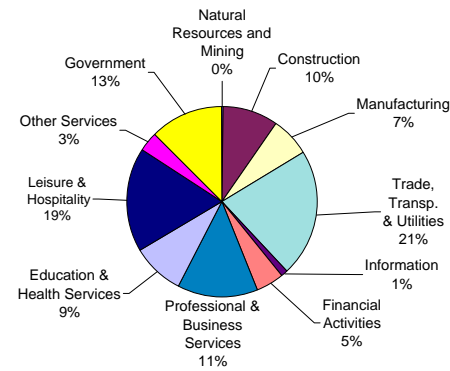
Industry	Avg. Hourly Wage
<b>Total All Industries</b>	<b>\$16.92</b>
Natural Resources and Mining	\$19.75
Construction	\$20.71
Manufacturing	\$17.89
Trade, Transportation & Utilities	\$15.46
Information	\$23.76
Financial Activities	\$19.75
Professional & Business Services	\$19.40
Education & Health Services	\$19.79
Leisure & Hospitality	\$12.11
Other Services	\$14.70
Government	\$24.63

Employment data for current month is preliminary and previous month has been revised. All data subject to annual benchmark revisions.

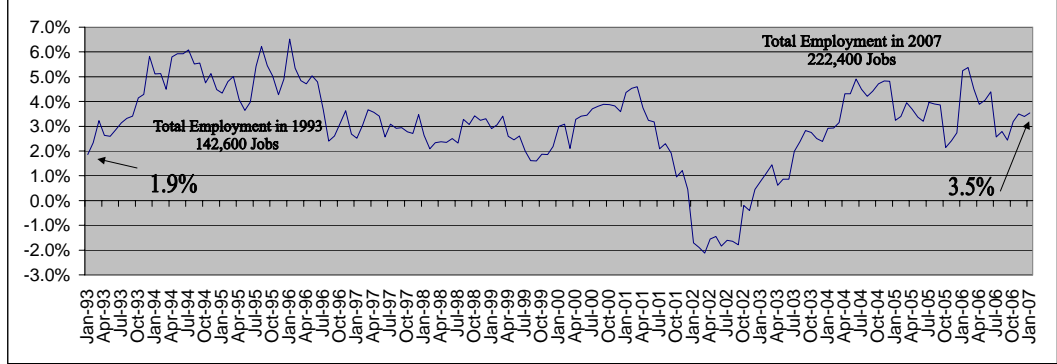
\*MSA = Metropolitan Statistical Area / Las Vegas-Paradise MSA = Clark County



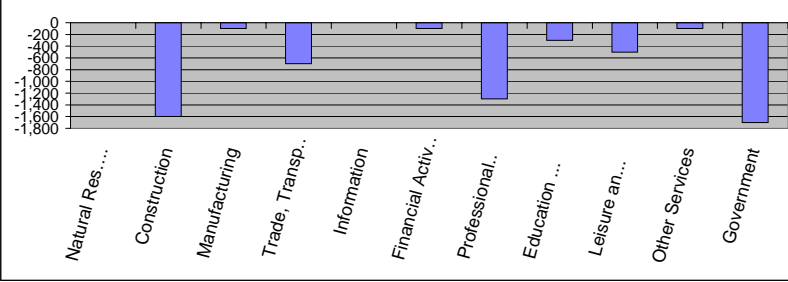
## Reno-Sparks MSA Industry Composition



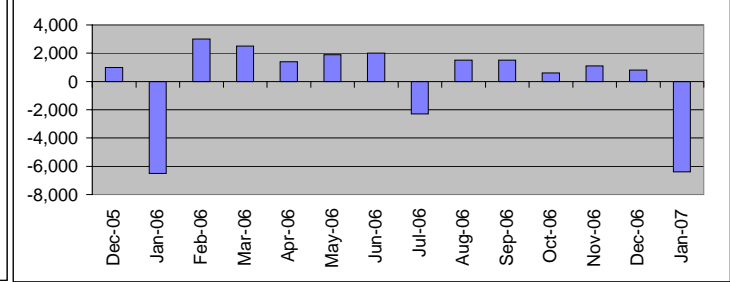
## Annual Job Growth Rate for Total NonAgricultural Employment



## Monthly Change by Industry



## Monthly Change In Total Non-Ag. Employment



## Reno-Sparks MSA Employment By Industry

	JAN 2007	DEC 2006	JAN 2006	Monthly Change		Annual Change	
				Total	%	Total	%
<b>Total All Industries</b>	<b>222,400</b>	<b>228,800</b>	<b>214,800</b>	<b>-6,400</b>	<b>-2.8%</b>	<b>7,600</b>	<b>3.5%</b>
<b>Natural Resources and Mining</b>	<b>400</b>	<b>400</b>	<b>400</b>	<b>0</b>	<b>0.0%</b>	<b>0</b>	<b>0.0%</b>
<b>Construction</b>	<b>21,300</b>	<b>22,900</b>	<b>22,200</b>	<b>-1,600</b>	<b>-7.0%</b>	<b>-900</b>	<b>-4.1%</b>
<b>Manufacturing</b>	<b>14,600</b>	<b>14,700</b>	<b>14,000</b>	<b>-100</b>	<b>-0.7%</b>	<b>600</b>	<b>4.3%</b>
<b>Trade, Transportation &amp; Utilities</b>	<b>48,200</b>	<b>48,900</b>	<b>45,700</b>	<b>-700</b>	<b>-1.4%</b>	<b>2,500</b>	<b>5.5%</b>
Wholesale	11,000	11,000	10,800	0	0.0%	200	1.9%
Retail	24,900	25,400	23,500	-500	-2.0%	1,400	6.0%
Trans, Warehousing and Utilities	12,300	12,500	11,400	-200	-1.6%	900	7.9%
<b>Information</b>	<b>2,700</b>	<b>2,700</b>	<b>2,800</b>	<b>0</b>	<b>0.0%</b>	<b>-100</b>	<b>-3.6%</b>
<b>Financial Activities</b>	<b>10,600</b>	<b>10,700</b>	<b>10,600</b>	<b>-100</b>	<b>-0.9%</b>	<b>0</b>	<b>0.0%</b>
Finance and Insurance	6,500	6,600	6,700	-100	-1.5%	-200	-3.0%
<b>Professional &amp; Business Services</b>	<b>29,900</b>	<b>31,200</b>	<b>27,500</b>	<b>-1,300</b>	<b>-4.2%</b>	<b>2,400</b>	<b>8.7%</b>
<b>Education &amp; Health Services</b>	<b>20,000</b>	<b>20,300</b>	<b>19,400</b>	<b>-300</b>	<b>-1.5%</b>	<b>600</b>	<b>3.1%</b>
<b>Leisure &amp; Hospitality</b>	<b>39,400</b>	<b>39,900</b>	<b>37,900</b>	<b>-500</b>	<b>-1.3%</b>	<b>1,500</b>	<b>4.0%</b>
Casino Hotels	18,700	18,800	18,700	-100	-0.5%	0	0.0%
Food Services and Drinking Places	13,500	13,700	12,000	-200	-1.5%	1,500	12.5%
<b>Other Services</b>	<b>7,200</b>	<b>7,300</b>	<b>7,000</b>	<b>-100</b>	<b>-1.4%</b>	<b>200</b>	<b>2.9%</b>
<b>Government</b>	<b>28,100</b>	<b>29,800</b>	<b>27,300</b>	<b>-1,700</b>	<b>-5.7%</b>	<b>800</b>	<b>2.9%</b>

## Size Class of Industries - Jun 2006 (Non-Government Worksites)

Size Class	Employees Per Worksite	Number of Worksites	Employment in Size Class	% of Total Employment
9	1000+	13	23,628	12.1%
8	500-999	15	10,251	5.2%
7	250-499	44	14,939	7.6%
6	100-249	212	31,420	16.1%
5	50-99	406	27,631	14.1%
4	20-49	1,200	35,675	18.3%
3	10-19	1,822	24,715	12.7%
2	5-9	2,380	15,640	8.0%
1	0-4	7,637	11,474	5.9%
<b>Total</b>		<b>13,729</b>	<b>195,373</b>	<b>100.0%</b>

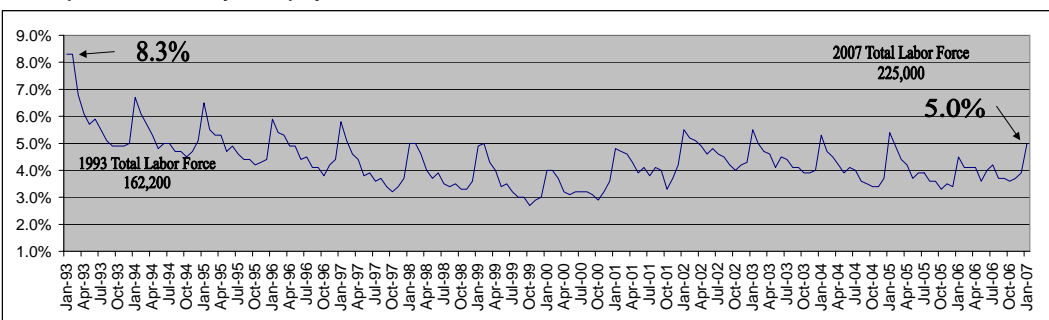
## Largest Private Employers - Jun 2006

Employer	Employees	Industry
INTERNATIONAL GAME TECHNOLOGY	2500-2999	Misc. Manufac.
RENOVN REGIONAL MEDICAL CENTER	2000-2499	Hospitals
SILVER LEGACY RESORT CASINO	2000-2499	Casino Hotels
PEPPERMILL HOTEL CASINO - RENO	2000-2499	Casino Hotels
ATLANTIS CASINO RESORT	1500-1999	Casino Hotels
RENO HILTON	1500-1999	Casino Hotels
ELDORADO HOTEL & CASINO	1500-1999	Casino Hotels
CIRCUS CIRCUS CASINOS, INC-RENO	1500-1999	Casino Hotels
SPARKS NUGGET, INC.	1500-1999	Casino Hotels
ST. MARY'S	1500-1999	Hospitals
HARRAH'S RENO	1000-1499	Casino Hotels
HIRE DYNAMICS, LLC	1000-1499	Temporary Help
UNITED PARCEL SERVICE	1000-1499	Couriers
Q&D CONSTRUCTION	900-999	Commercial Bldg
CLUB CAL-NEVA	900-999	Casino Hotels

## Labor Force and Unemployment

	JAN 2007	DEC 2006	JAN 2006	Monthly Change		Annual Change	
				Total	%	Total	%
Total Labor Force	225,000	227,500	209,500	-2,500	-1.1%	15,500	7.4%
Unemployment	11,300	8,900	9,400	2,400	27.0%	1,900	20.2%
<b>Unemployment Rate</b>	<b>5.0%</b>	<b>3.9%</b>	<b>4.5%</b>	*	*	*	*
Total Employment	213,700	218,600	200,100	-4,900	-2.2%	13,600	6.8%

## Reno-Sparks MSA Monthly Unemployment Rates 1993 to Current



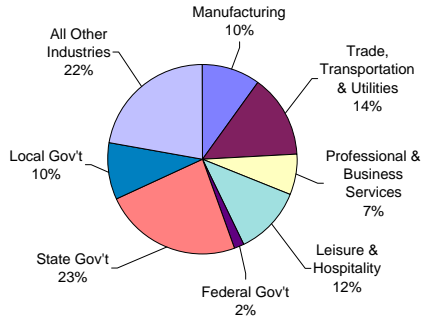
## 2006 Avg Wages By Industry-OES Survey Data

Industry	Avg. Hourly Wage
<b>Total All Industries</b>	<b>\$17.65</b>
Natural Resources and Mining	\$18.83
Construction	\$20.19
Manufacturing	\$18.92
Trade, Transportation & Utilities	\$16.46
Information	\$19.69
Financial Activities	\$20.77
Professional & Business Services	\$17.64
Education & Health Services	\$21.98
Leisure & Hospitality	\$10.21
Other Services	\$16.54
Government	\$23.32

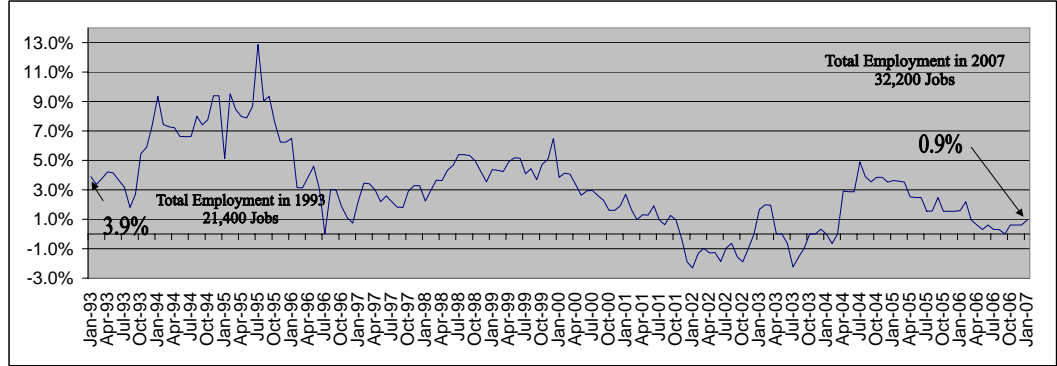
Employment data for current month is preliminary and previous month has been revised. All data subject to annual benchmark revisions.

\*MSA = Metropolitan Statistical Area / Reno-Sparks MSA = Washoe County and Storey County

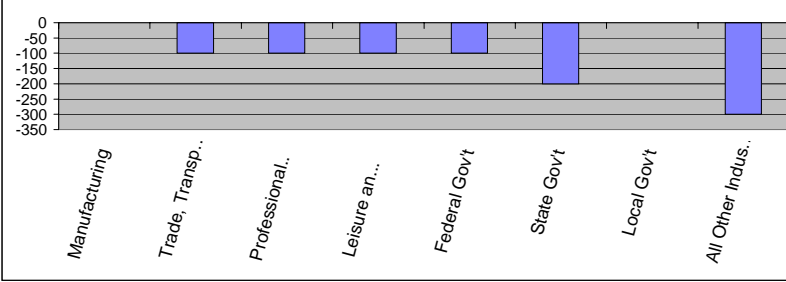
## Carson City MSA Industry Composition



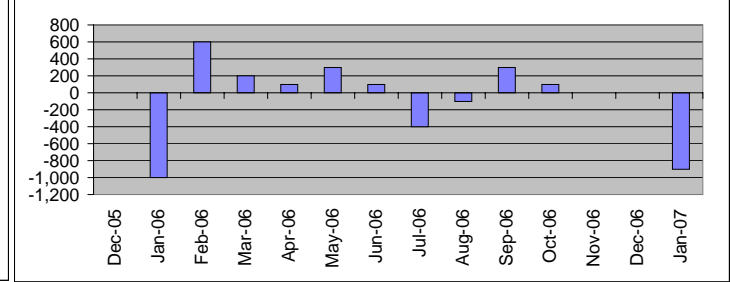
## Annual Job Growth Rate for Total NonAgricultural Employment



## Monthly Change by Industry



## Monthly Change In Total Non-Ag. Employment



## Carson City MSA Employment By Industry

	JAN 2007	DEC 2006	JAN 2006	Monthly Change		Annual Change	
				Total	%	Total	%
<b>Total All Industries</b>	<b>32,200</b>	<b>33,100</b>	<b>31,900</b>	<b>-900</b>	<b>-2.7%</b>	<b>300</b>	<b>0.9%</b>
<b>Goods Producing</b>	<b>5,200</b>	<b>5,300</b>	<b>5,200</b>	<b>-100</b>	<b>-1.9%</b>	<b>0</b>	<b>0.0%</b>
<b>Manufacturing</b>	<b>3,200</b>	<b>3,200</b>	<b>3,100</b>	<b>0</b>	<b>0.0%</b>	<b>100</b>	<b>3.2%</b>
<b>Services Producing</b>	<b>27,000</b>	<b>27,800</b>	<b>26,700</b>	<b>-800</b>	<b>-2.9%</b>	<b>300</b>	<b>1.1%</b>
<b>Private Services Producing</b>	<b>15,800</b>	<b>16,300</b>	<b>16,100</b>	<b>-500</b>	<b>-3.1%</b>	<b>-300</b>	<b>-1.9%</b>
<b>Trade, Transportation &amp; Utilities</b>	<b>4,600</b>	<b>4,700</b>	<b>4,700</b>	<b>-100</b>	<b>-2.1%</b>	<b>-100</b>	<b>-2.1%</b>
Retail	3,500	3,600	3,600	-100	-2.8%	-100	-2.8%
<b>Professional &amp; Business Services</b>	<b>2,200</b>	<b>2,300</b>	<b>2,500</b>	<b>-100</b>	<b>-4.3%</b>	<b>-300</b>	<b>-12.0%</b>
<b>Leisure &amp; Hospitality</b>	<b>3,800</b>	<b>3,900</b>	<b>3,900</b>	<b>-100</b>	<b>-2.6%</b>	<b>-100</b>	<b>-2.6%</b>
<b>Government</b>	<b>11,200</b>	<b>11,500</b>	<b>10,600</b>	<b>-300</b>	<b>-2.6%</b>	<b>600</b>	<b>5.7%</b>
Federal	500	600	500	-100	-16.7%	0	0.0%
State	7,600	7,800	7,000	-200	-2.6%	600	8.6%
Local	3,100	3,100	3,100	0	0.0%	0	0.0%

## Size Class of Industries - Jun 2006 (Non-Government Worksites)

Size Class	Employees Per Worksite	Number of Worksites	Employment in Size Class	% of Total Employment
9	1000+	0	0	0.0%
8	500-999	0	0	0.0%
7	250-499	4	1,678	7.7%
6	100-249	25	3,780	17.3%
5	50-99	48	3,232	14.8%
4	20-49	165	4,977	22.8%
3	10-19	263	3,504	16.0%
2	5-9	387	2,586	11.8%
1	0-4	1,282	2,112	9.7%
<b>Total</b>		<b>2,174</b>	<b>21,869</b>	<b>100.0%</b>

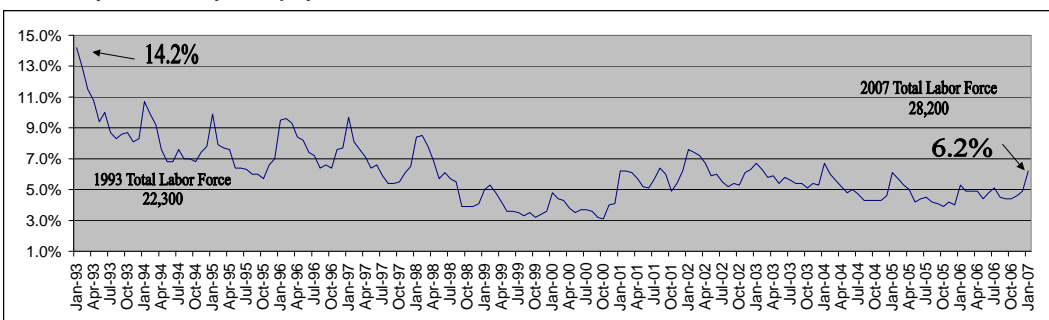
## Largest Private Employers - Jun 2006

Employer	Employees	Industry
CARSON CITY NUGGET	400-499	Casinos
CASINO FANDANGO	400-499	Casinos
CHROMALLOY NEVADA	300-399	Aircraft Engines
WAL-MART SUPERCENTER	300-399	Warehouse Clubs
PINON PLAZA RESORT	200-299	Casino Hotels
HARLEY-DAVIDSON CREDIT CORP	200-299	Sales Financing
PCC STRUCTURALS - CARSON	200-299	Steel Foundries
COSTCO WHOLESALE CORP.	200-299	Warehouse Clubs
CARSON STATION HOTEL CASINO	200-299	Casino Hotels
MISSION INDUSTRIES	100-199	Linin Supply
SLOTWORLD INC	100-199	Casinos
LOWES HOME IMPROVEMENT	100-199	Home Centers
CLICK BOND, INC.	100-199	Bolts, Nuts Mfg.
NEVADA APPEAL	100-199	Newspapers
WESTERN TEMPORARY SERVICES USA	100-199	Temporary Help

## Labor Force and Unemployment

	JAN 2007	DEC 2006	JAN 2006	Monthly Change		Annual Change	
				Total	%	Total	%
Total Labor Force	28,200	28,600	26,900	-400	-1.4%	1,300	4.8%
Unemployment	1,800	1,400	1,400	400	28.6%	400	28.6%
<b>Unemployment Rate</b>	<b>6.2%</b>	<b>4.9%</b>	<b>5.3%</b>	*	*	*	*
Total Employment	26,400	27,200	25,500	-800	-2.9%	900	3.5%

## Carson City MSA Monthly Unemployment Rates 1993 to Current



## 2006 Avg Wages By Industry-OES Survey Data

Industry	Avg. Hourly Wage
<b>Total All Industries</b>	<b>\$18.25</b>
Natural Resources and Mining	N/A
Construction	\$19.19
Manufacturing	\$17.62
Trade, Transportation & Utilities	\$16.24
Information	\$17.76
Financial Activities	\$15.77
Professional & Business Services	\$19.01
Education & Health Services	\$19.69
Leisure & Hospitality	\$9.37
Other Services	\$13.80
Government	\$23.64

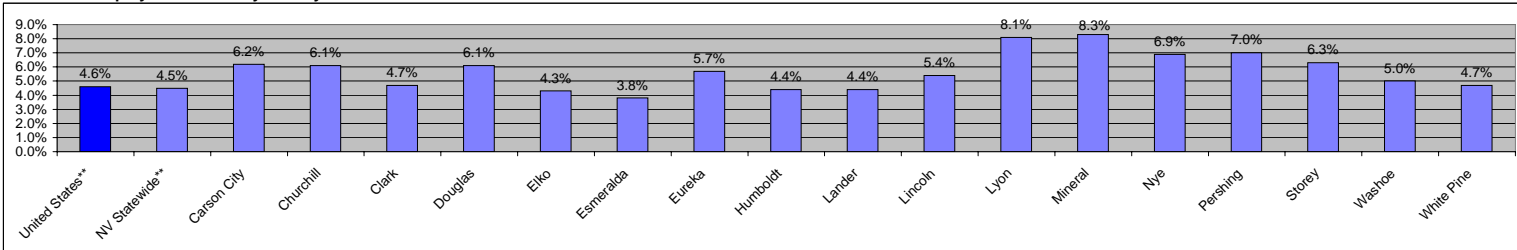
Employment data for current month is preliminary and previous month has been revised. All data subject to annual benchmark revisions.

\*MSA = Metropolitan Statistical Area / Carson City MSA = Carson City

# Nevada County Employment and Unemployment Summary

## January 2007

### Current Unemployment Rates By County



### Total Labor Force - January 2007

	Total Labor Force	# of Employed	# of Unemployed	Unemp. Rate
Nevada**	1,326,300	1,261,100	65,200	4.5%
Carson City	28,100	26,350	1,750	6.2%
Churchill	13,090	12,290	800	6.1%
Clark	950,500	905,770	44,730	4.7%
Douglas	22,400	21,040	1,360	6.1%
Elko	24,930	23,860	1,070	4.3%
Esmeralda	480	460	20	3.8%
Eureka	720	680	40	5.7%
Humboldt	8,030	7,680	350	4.4%
Lander	3,090	2,950	140	4.4%
Lincoln	1,630	1,540	90	5.4%
Lyon	21,760	19,990	1,770	8.1%
Mineral	2,040	1,870	170	8.3%
Nye	17,740	16,520	1,220	6.9%
Pershing	2,410	2,240	170	7.0%
Storey	2,440	2,290	150	6.3%
Washoe	222,550	211,380	11,170	5.0%
White Pine	4,430	4,220	210	4.7%
Elko Metropolitan Area***	25,660	24,550	1,110	4.3%

### Total Labor Force - January 2006

	Total Labor Force	# of Employed	# of Unemployed	Unemp. Rate
Nevada**	1,228,000	1,177,300	50,700	3.6%
Carson City	26,960	25,530	1,430	5.3%
Churchill	12,370	11,760	610	5.0%
Clark	876,100	842,220	33,880	3.9%
Douglas	21,610	20,490	1,120	5.2%
Elko	23,180	22,150	1,030	4.4%
Esmeralda	450	430	20	4.9%
Eureka	680	640	40	5.9%
Humboldt	7,590	7,260	330	4.3%
Lander	2,760	2,630	130	4.7%
Lincoln	1,480	1,400	80	5.2%
Lyon	20,340	19,010	1,330	6.6%
Mineral	2,100	1,930	170	8.0%
Nye	16,400	15,580	820	5.0%
Pershing	2,360	2,200	160	6.9%
Storey	2,150	2,020	130	5.9%
Washoe	207,350	198,120	9,230	4.5%
White Pine	4,180	3,980	200	4.9%
Elko Metropolitan Area***	23,870	22,800	1,070	4.5%

### Labor Force Change (January 2006 to January 2007)

	Change In Total Labor Force		Change In Number of Employed		Change In Number of Unemployed	
	Number	Percent	Number	Percent	Number	Percent
Nevada**	98,300	8.0%	83,800	7.1%	14,500	28.6%
Carson City	1,140	4.2%	820	3.2%	320	22.4%
Churchill	720	5.8%	530	4.5%	190	31.1%
Clark	74,400	8.5%	63,550	7.5%	10,850	32.0%
Douglas	790	3.7%	550	2.7%	240	21.4%
Elko	1,750	7.5%	1,710	7.7%	40	3.9%
Esmeralda	30	6.7%	30	7.0%	0	0.0%
Eureka	40	5.9%	40	6.3%	0	0.0%
Humboldt	440	5.8%	420	5.8%	20	6.1%
Lander	330	12.0%	320	12.2%	10	7.7%
Lincoln	150	10.1%	140	10.0%	10	12.5%
Lyon	1,420	7.0%	980	5.2%	440	33.1%
Mineral	-60	-2.9%	-60	-3.1%	0	0.0%
Nye	1,340	8.2%	940	6.0%	400	48.8%
Pershing	50	2.1%	40	1.8%	10	6.3%
Storey	290	13.5%	270	13.4%	20	15.4%
Washoe	15,200	7.3%	13,260	6.7%	1,940	21.0%
White Pine	250	6.0%	240	6.0%	10	5.0%
Elko Metropolitan Area***	1,790	7.5%	1,750	7.7%	40	3.7%

### Employment by Area - 2nd Quarter 2006 (Apr-Jun) Average

	2nd Qtr 2006	2nd Qtr 2005	Total Change	% Change
Nevada	1,275,616	1,214,122	61,494	5.1%
Carson City	32,101	32,177	-76	-0.2%
Churchill	8,914	8,733	181	2.1%
Clark	914,477	864,035	50,442	5.8%
Douglas	22,022	21,919	103	0.5%
Elko	20,535	20,058	477	2.4%
Esmeralda	239	231	8	3.5%
Eureka	4,226	3,784	442	11.7%
Humboldt	7,938	7,511	427	5.7%
Lander	2,019	1,976	43	2.2%
Lincoln	1,311	1,290	21	1.6%
Lyon	13,037	12,213	824	6.7%
Mineral	1,663	1,708	-45	-2.6%
Nye	12,758	12,074	684	5.7%
Pershing	1,852	1,890	-38	-2.0%
Storey	2,013	1,292	721	55.8%
Washoe	218,613	211,034	7,579	3.6%
White Pine	3,921	3,856	65	1.7%

### Employment By Industry - 2nd Quarter 2006 (Apr-Jun) Average

	Nat. Resources & Mining	Const	Manuf	Trade, Transp. & Utilities	Information	Financial Activities	Profess. & Bus. Svcs	Education & Health Svcs	Leisure and Hospitality	Other Services	Gov't
Nevada	13,832	146,174	50,465	223,502	15,108	65,406	158,652	86,744	338,648	28,642	146,957
Carson City	*	2,223	3,162	4,710	291	1,600	2,489	2,244	4,062	884	10,401
Churchill	277	863	501	1,923	134	328	954	817	1,083	153	1,879
Clark	504	110,626	27,119	154,277	10,930	50,005	115,631	59,631	273,369	20,259	91,210
Douglas	184	2,160	1,785	2,751	230	805	1,691	1,130	8,534	373	2,348
Elko	2,338	1,317	212	3,567	193	520	972	1,089	6,055	531	3,124
Esmeralda	72	19	*	17	*	0	*	0	*	*	101
Eureka	3,698	*	*	53	*	5	11	*	38	8	190
Humboldt	2,099	398	324	1,445	92	114	460	273	1,134	205	1,392
Lander	685	20	*	430	*	23	41	35	213	5	528
Lincoln	38	23	*	208	22	50	*	29	84	6	618
Lyon	782	1,531	2,397	2,612	23	266	797	609	1,576	250	2,178
Mineral	24	23	*	132	*	35	*	91	258	8	582
Nye	1,180	1,220	338	1,808	90	331	2,836	647	2,179	227	1,882
Pershing	539	24	38	192	10	29	17	37	173	49	744
Storey	79	174	398	797	*	18	62	7	156	124	197
Washoe	507	24,373	14,073	45,841	2,778	10,726	28,283	19,795	39,143	5,373	27,490
White Pine	738	158	31	536	30	100	123	138	514	69	1,485

### Hours and Earnings

	Production Workers (in 000's)			Average Weekly Earnings			Average Weekly Hours			Average Hourly Earnings		
	JAN 2007	JAN 2006	DEC 2006	JAN 2007	JAN 2006	DEC 2006	JAN 2007	JAN 2006	DEC 2006	JAN 2007	JAN 2006	DEC 2006
Nevada	109,200	107,500	112,600	\$839.80	\$805.20	\$838.49	38.0	36.7	38.2	\$22.10	\$21.94	\$21.95
Construction	36,900	36,000	37,000	\$610.35	\$596.67	\$609.94	39.1	39.1	39.3	\$15.61	\$15.26	\$15.52
Manufacturing	25,300	25,100	25,300	\$616.14	\$599.84	\$617.78	38.8	38.6	39.1	\$15.88	\$15.54	\$15.80
Durable Goods	11,600	10,900	11,700	\$595.19	\$587.47	\$594.21	39.6	40.1	39.8	\$15.03	\$14.65	\$14.93
Non-durable Goods	32,700	31,000	32,900	\$599.50	\$585.27	\$611.53	35.6	35.3	36.1	\$16.84	\$16.58	\$16.94
Wholesale Trade	120,200	115,000	126,600	\$435.34	\$446.90	\$437.08	33.8	35.3	34.2	\$12.88	\$12.66	\$12.78
Retail Trade												
Las Vegas-Paradise MSA												
Construction	84,700	83,600	87,100	\$887.81	\$868.94	\$885.10	38.4	37.6	38.6	\$23.12	\$23.11	\$22.93
Manufacturing	20,300	20,300	20,200	\$593.43	\$592.18	\$597.17	39.3	39.4	39.6	\$15.10	\$15.03	\$15.08
Wholesale Trade	19,800	18,600	19,800	\$652.43	\$628.61	\$661.62	37.8	37.8	38.2	\$17.26	\$16.63	\$17.32
Retail Trade	86,800	83,500	91,200	\$446.78	\$453.83	\$451.74	34.5	35.4	35.1	\$12.95	\$12.82	\$12.87

### Seasonally Adjusted Employment (Statewide Only)

Employment In Thousands	Jan-06	Feb-06	Mar-06	Apr-06	May-06	Jun-06	Jul-06	Aug-06	Sep-06	Oct-06	Nov-06	Dec-06	Jan-07
Total All Industries	1262.1	1270.0	1273.1	1275.6	1279.8	1284.7	1282.0	1283.4	1285.7	1288.0	1293.7	1300.1	1302.8
Natural Resources and Mining	11.2	11.2	11.3	11.4	11.5	11.6	11.5	11.6	11.6	11.9	11.9	11.9	11.8
Construction	144.0	146.1	145.3	145.2	145.6	145.4	143.2	142.5	141.4	141.5	142.1	142.3	141.6
Manufacturing	49.0	49.4	49.8	50.1	50.4	50.7	50.7	50.6	51.0	51.1	51.2	51.3	51.6
Trade, Transportation & Utilities	223.0	224.1	225.8	225.3	226.1	226.3	226.1	227.0	227.3	227.1	227.8	228.8	232.0
Retail	135.7	136.6	137.8	137.2	137.4	137.2	136.9	137.2	137.2	137.1	137.4	137.8	140.2
Information	14.8	15.2	14.7	15.0	15.1	15.1	15.6	15.7	15.2	15.7	15.4	15.6	15.7
Financial Activities	64.8	64.8	65.1	65.2	65.5	65.7	65.8	65.9	66.0	66.3	66.5	66.8	66.4
Professional & Business Services	154.0	155.3	156.6	156.6	157.5	158.7	158.1	158.2	158.5	157.5	159.7	162.4	162.4
Education & Health Services	85.7	86.1	86.4	86.2	86.6	87.2	87.3	87.8	88.4	88.7	88.9	89.5	89.5
Leisure & Hospitality	333.6	334.9	335.2	335.8	336.4	338.3	337.3	336.8	338.3	338.6	339.6	340.4	341.0
Casino Hotels and Gaming	217.1	218.1	217.1	216.6	216.7	217.4	217.0	217.0	216.9	216.6	216.7	216.3	217.2
Other Services	35.0	35.0	35.2	35.6	36.0	36.0	36.0	36.4	36.7	37.3	37.6	38.0	36.7
Government	147.0	147.9	147.7	149.2	149.1	149.7	150.4	150.9	151.3	152.3	153.0	153.1	153.9

Employment data for current month is preliminary and previous month has been revised. All data subject to annual benchmark revisions.

\* Indicates Data Suppressed Due To Confidentiality. \*\*The United States and Nevada statewide unemployment rates are seasonally adjusted.

\*\*\* Elko Metropolitan Statistical Area = Elko and Eureka Counties

State of Nevada  
Department of Employment, Training & Rehabilitation  
Research & Analysis Bureau  
500 E. Third Street  
Carson City, NV 89713-0001

# Nevada Economy In Brief

The Nevada Economy in Brief provides a wealth of Nevada workforce and economic information and is published monthly by the Nevada Department of Employment, Training and Rehabilitation / Research and Analysis Bureau. Material contained in this publication is produced in cooperation with the U.S. Department of Labor (Bureau of Labor Statistics and the Employment and Training Administration) and may be reproduced without permission. Please credit Nevada Department of Employment, Training and Rehabilitation. For additional workforce or other economic information, a free subscription to the Nevada Economy in Brief, or to change your mailing address, please contact the Research and Analysis Bureau.

Phone (775) 684-0450  
Fax (775) 684-0342  
E-mail [detrlmi@nvdetr.org](mailto:detrlmi@nvdetr.org)

Websites  
[www.nevadaworkforce.com](http://www.nevadaworkforce.com)  
[www.nevadajobconnect.com](http://www.nevadajobconnect.com)  
[www.nvdetr.org](http://www.nvdetr.org)

