

Economy In Brief May 2017



A Monthly Review of Workforce & Economic Information by the Research & Analysis Bureau-

Economic Summary

Last month we reported a sizeable increase in jobs for April, up 11,300 from March. At that time, we cautioned against reading too much into that gain (the second-strongest of the recovery period) and suggested that it would likely change considerably once revised. Indeed, that gain has already been revised downward by 3,400, and it wouldn't be surprising if it is adjusted further during the year-end benchmarking process. We also suggested that such volatility is oftentimes followed by a "correction" in the opposite direction.

April's exceptionally high seasonally-adjusted employment gains have been tempered somewhat by a seasonally-adjusted decline of 6,500 in May. Much of this month-to-month volatility is due to changing seasonal expectations for the leisure and hospitality sector. Taking out these industries, seasonally-adjusted employment increased by 4,600 in April and declined by only 500 in May. Altogether, Nevada added 2,500 jobs this month when 9,000 were expected based upon historical trends, resulting in the seasonally adjusted loss. Specifically, private sector employment declined by 7,400 while government employment increased by 900.

In May, employment in the Silver State increased on a year-over-year basis for the 77th month in a row. Nevada has added 35,000 jobs since this time last year, a growth rate of 2.7 percent. Nation-

ally, employment increased by 1.6 percent over the year. May marks the 58th consecutive month that year-over-year job growth in the Silver State has outpaced the nation. Through the first five months of the year, jobs are up 39,300 on average relative to a year ago. This is perhaps the best barometer of underlying employment trends.

Nevada was the hardest-hit state during the Great Recession, with employment impacts arriving later and lingering longer than in the U.S. as a whole. The State lost 14.3 percent of its employment as the recession unfolded, equating to 185,700 jobs, while national employment only declined by 6.3 percent. In May, employment stands at 1.33 million in the Silver State, an increase of 19.4 percent or 215,600 jobs since the recession, and 29,900 higher than the previous peak. In fact, current employment is 102.3 percent of the previous peak. Nationally, employment has increased by 12.6 percent from the depth of the recession. Current employment, at 146.1 million, is 105.6 percent of pre-recession peak employment. Nevada still has room to improve, as current employment has not surpassed previous levels to the same extent as in the nation as a whole.

Last month we began an exploration of how structural changes in the economy (such as online shopping) will impact retail trade jobs in the Silver State. We found that retail trade has grown faster in Ne-

Economic Indicators

UNEMPLOYMENT RATES May 2017

Nevada*	4.7%
Las Vegas MSA	4.8%
Reno-Sparks MSA	3.9%
Carson City MSA	4.7%
United States*	4.3%

JOB GROWTH (YOY) May 2017

Nevada*	2.7%
Las Vegas MSA*	2.9%
Reno-Sparks MSA*	2.7%
Carson City MSA*	1.8%
United States*	1.6%

GAMING WIN (YOY) April 2017

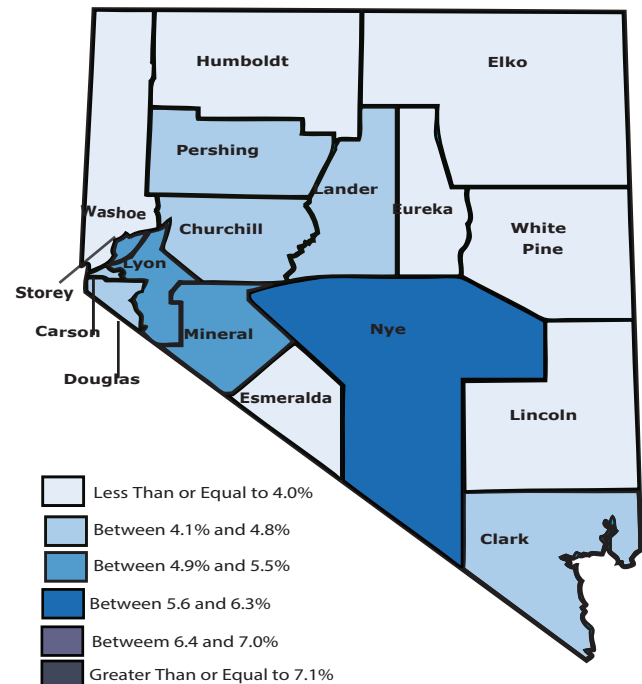
Nevada	1.2%
Clark County	1.4%
Washoe County	-3.1%

TAXABLE SALES (YOY) March 2017

Nevada	15.0%
Clark County	9.8%
Washoe County	7.2%

*Seasonally Adjusted

Unemployment Rate by County



Economic Summary

vada than in the U.S. as a whole over the recovery period, though both areas are showing signs of easing.

This month we examine the relative growth of employment in retail and in transportation/warehousing since 2010. Coupled with the rise of online shopping (and subsequent decline of traditional retail jobs), we would expect increased transportation and warehousing employment in such sectors as distribution/fulfillment centers. Retail employment in the Silver State has hovered in a narrow range, from 140,000 to 150,000, since mid-2015. This is an increase of 15 percent from January, 2010. Transportation and warehousing, on the other hand, has maintained an upward trend (despite slight declines year-to-date). Currently, employment in the industry stands at 59,000, 28 percent higher than in the beginning of 2010. Overall, Nevada's employment trends in these industries are mirroring the nation, albeit at even stronger growth rates.

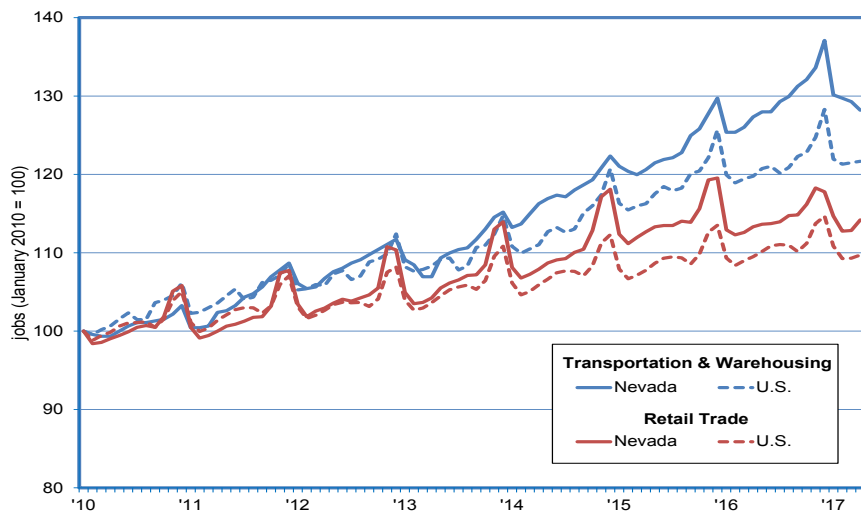
In April, we utilized Job-to-Job Flow information from the Census Bureau's Longitudinal Employer-Household Dynamics (LED) tool to examine the extent to which Nevada's construction workers left the State during the recession. We found that out-migration did indeed increase as the downturn took hold, but has declined noticeably as the recovery has unfolded. This month, we assess the extent to which Nevada's construction workforce has been impacted by the in-migration of workers from out-of-State over the course of the business cycle.

Quarterly inflows of Nevada construction workers were on the rise prior to the recession, peaking at about 3,000 per quarter, or roughly double the levels from earlier in the decade. This suggests that the booming construction sector attracted workers to the Silver State. In-migration dropped significantly during the recession. The number of construction workers moving into Nevada fell below 1,000 per quarter, approaching a low of 500. Construction worker in-migration started trending up slightly in 2010. By mid-2012, in-migration exceeded 1,000 per quarter. Recent reports show that construction worker inflows are hovering just below 1,300.

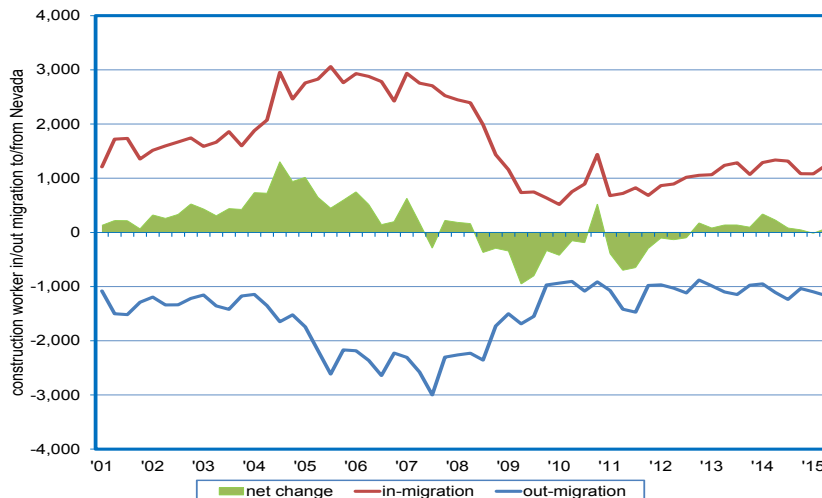
Silver State Hit Harder than the U.S. During Recession; Nevada's Jobs Recovery Stronger Than in Nation; Still Room for Improvement

Recession and Recovery Profile, Nevada vs U.S.			
<i>Total Nonfarm Employment, Seasonally Adjusted</i>			
		Nevada	U.S.
Pre-recession Peak		1,297,200	138,430,000
	<i>Date</i>	<i>May-07</i>	<i>Jan-08</i>
Recessionary Low (Trough)		1,111,500	129,733,000
	<i>Date</i>	<i>Sep-10</i>	<i>Feb-10</i>
<i>Jobs Lost From Peak to Trough</i>		185,700	8,697,000
<i>Percentage Employment Lost During Recession</i>		-14.3%	-6.3%
Current Employment (May 2017)		1,327,100	146,135,000
<i>Jobs Gained from Trough to Current</i>		215,600	16,402,000
<i>Percentage Employment Gained Since Recession</i>		19.4%	12.6%
<i>Current Employment as Percentage of Prior Peak</i>		102.3%	105.6%

Is There a Tradeoff Between Retail Trade and Transportation/Warehousing Jobs? The Latter is Growing Faster in Nevada and the US



Construction Workers Moving Into Nevada Once Again After Declining Noticeably During the Recession



Economic Summary

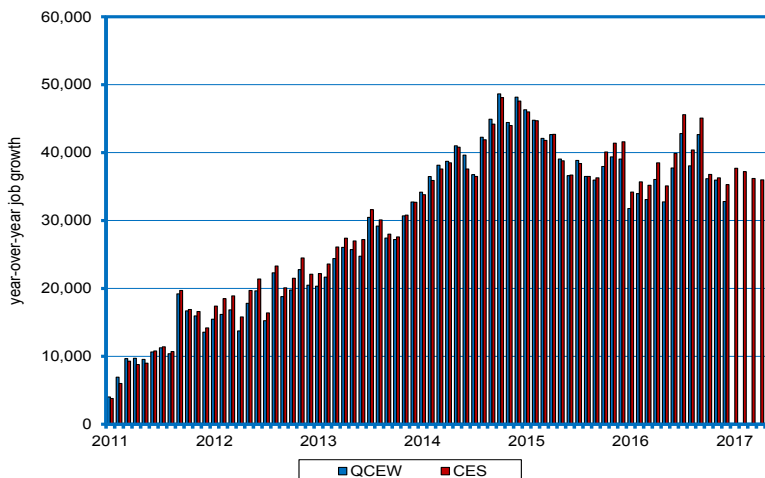
These trends suggest that as the construction sector has emerged from the recession, an increasing number of workers from outside the Silver State are coming here in search of job opportunities. Looked at another way, an analysis of net migration also sheds light on the response of the construction workforce to the business cycle. Prior to the recession, the inflows of workers consistently exceeded outflows. During the downturn, the opposite was true; more construction workers left the State than moved here. As the recovery has unfolded, net migration has, once again, turned positive.

Information obtained through the Quarterly Census of Employment and Wages (QCEW) program provides a nearly complete job count based upon quarterly wage records submitted by employers whose employees are covered under the Unemployment Insurance System. As a result, historical information is subject to minimal, if any, revisions. However, because generating this information is a time-consuming process, it is only available with a four- to five-month lag.

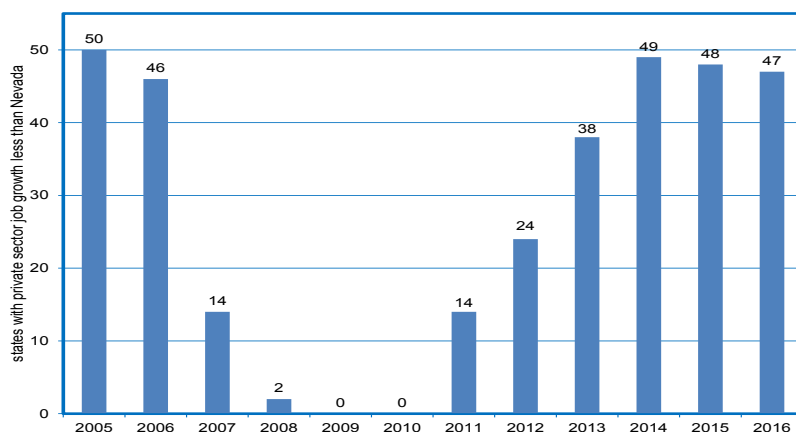
Monthly employment estimates, on the other hand, are produced by the timelier Current Employment Statistics (CES) program. These estimates are revised at the end of every calendar year using benchmark data from QCEW. An initial review of third quarter data from 2016 indicated that CES may have been slightly over-estimating employment counts in recent months, as gains were more pronounced in CES estimates than in QCEW counts. Fourth quarter data, which reported a lower overall growth rate, shows a narrowing of the gap in estimates from the two series. Combined, these factors continue to support a possible modest downward revision during this year's annual CES benchmarking process.

Information from QCEW encompasses jobs in all fifty states plus the District of Columbia. Using this information, we are able to compare job growth between states in 2016. In the years preceding the economic downturn, Nevada led the country in private sector employment growth. Indeed, Nevada had the

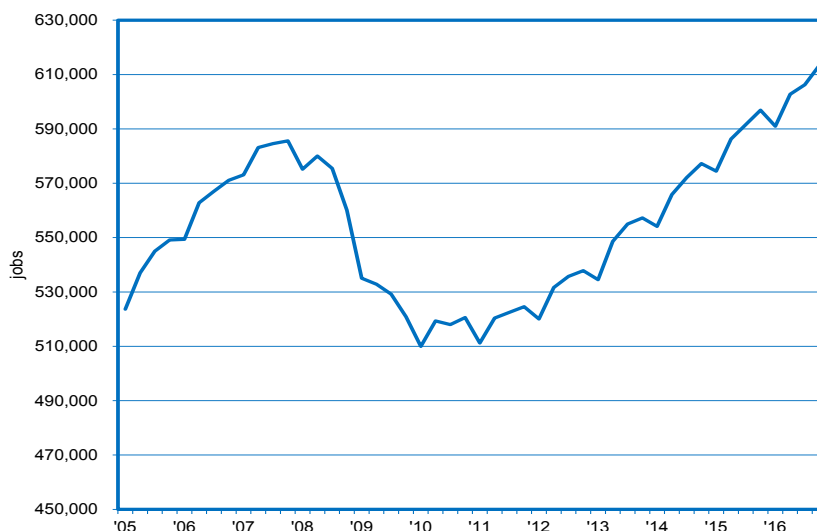
Monthly Job Estimates Remain Barely on the High Side; A Modest Downward Revision May Result From the Annual Benchmark



Nevada has Fourth-Highest Job Growth in the US; Only Utah, Idaho, and Florida had Higher Job Growth than Nevada's 3.4% in 2016



Small Biz Sets New Employment Record; Jobs up 16,700 Over the Year in 2016:IVQ



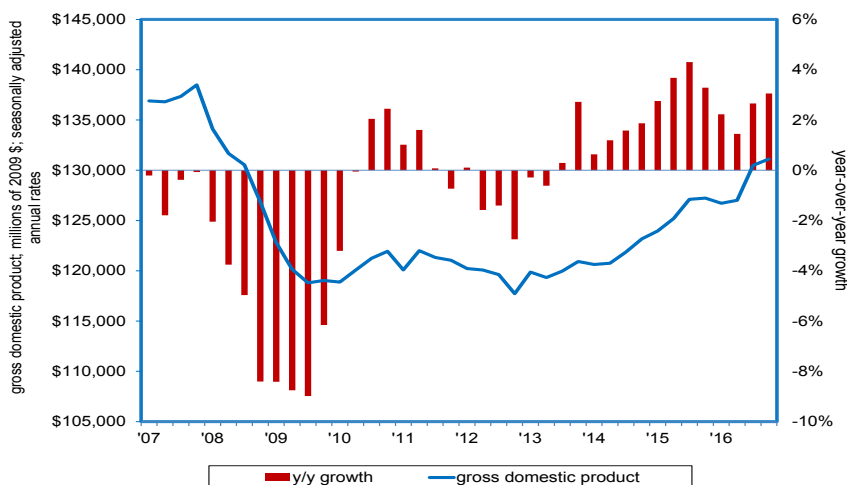
Economic Summary

highest employment growth rate in the country in 2005 (6.4 percent). Conversely, during the recession, Nevada was the most-affected state in terms of private sector employment. In fact, Nevada's employment growth was the lowest in the nation in 2009 (-10.1 percent) and 2010 (-2.8 percent). Nevada has gradually regained lost ground over the past six years, peaking in 2014 as the second-fastest growing state in the nation, with a private sector growth rate of four percent. With data through the end of 2016, we see that Nevada had the fourth-fastest growing private sector in the nation, with a 3.4 percent job growth rate during the year, relative to 2015. Only Utah, Idaho, and Florida realized stronger private sector job growth than Nevada over the year.

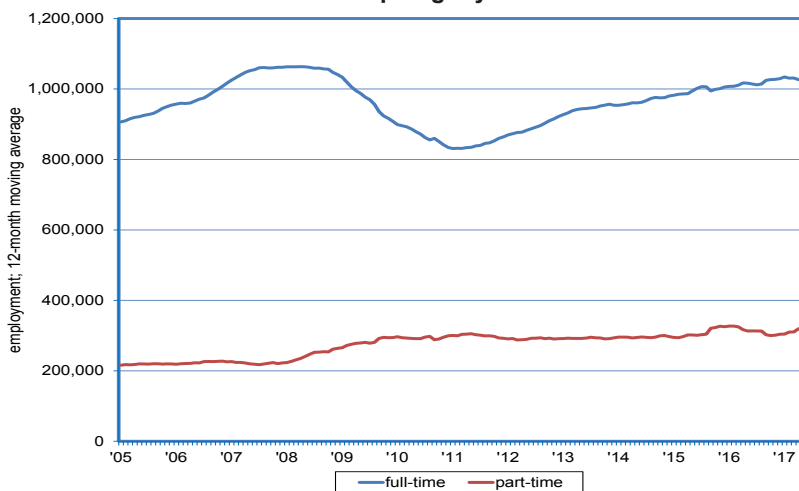
Using this same information we can examine small business employment in the State. As of 2016:IVQ, employment in Nevada firms with less than 100 employees totaled 614,000. This represents a new record high for the Silver State's small businesses. It also marks the seventh-consecutive quarter in which the pre-recessionary peak has been exceeded. All told, the 16,700 year-over-year job gain recorded in last year's fourth quarter translates into the 24th consecutive quarter of annualized growth. Prior to the recession, small business employment peaked at nearly 586,000 in 2007:IVQ. As the downturn unfolded, small business jobs fell to 510,000. Hence, almost 104,000 jobs have been added to small business payrolls in the Silver State since the recovery began. For all of 2016, small business employment averaged 603,000 per quarter (also a record high), compared to 587,000 in 2015.

Additional information from QCEW shows that weekly wages in Nevada averaged \$906 during 2016. This compares to \$879 in 2015, a gain of three percent. This is the highest annual growth rate for average weekly wages in the Silver State during the economic recovery period, and the highest nominal annual reading on record. Wages have been trending up since 2011, albeit at a modest pace, with gains recorded in 13 of the past 15 quarters. At the height of the recession, wages declined in five of seven quarters.

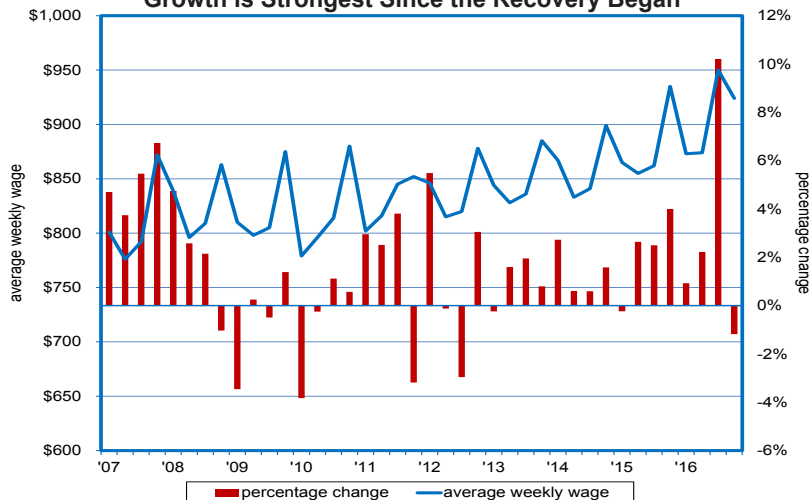
Nevada's Economy Grows in Each of Past 14 Quarters; GDP Growth Exceeds the Nation's in the Past Seven Quarters



Full-Time Employment Strong Since the Recovery Began; Part-Time Up Slightly



Average Weekly Wages at \$906 in 2016—An All-Time High; Growth is Strongest Since the Recovery Began



Economic Summary

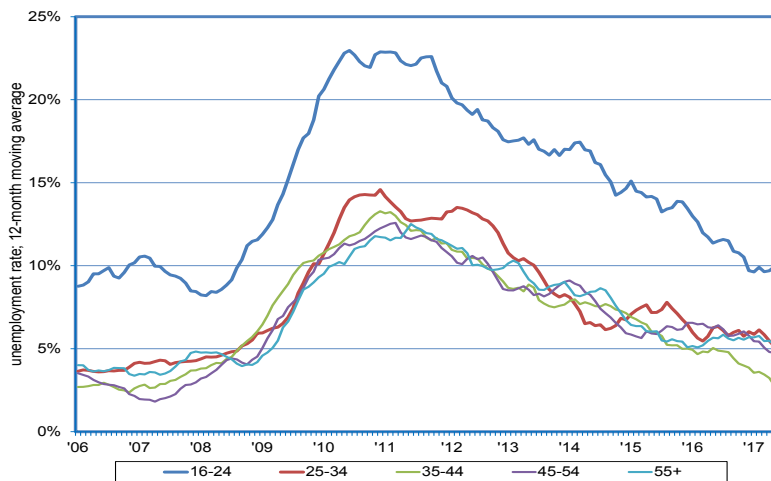
In the fourth quarter of 2016, wages declined by \$11 from 2015. This equates to a 1.2 percent decrease. An anomalous increase in the third quarter is likely the cause for this contraction. It is evident that a number of bonuses that are generally paid in the fourth quarter of a given year were moved up to the third quarter in 2016. This helps to explain why a relatively weaker fourth quarter was recorded in spite of a favorable annual growth reading. In fact, when we consider only the second half of the year, in order to control for the effects of the third quarter reading relative to the same period in 2015, we see that wage growth averaged 4.3 percent. Again, this is the strongest growth rate reading for the latter half of the year since the beginning of the recovery. Underlying trends continue to improve as well, as wage growth is more than keeping up with inflation. During 2016, consumer prices rose 1.3 percent relative to a year ago, according to the Consumer Price Index reported by the Bureau of Labor Statistics. This suggests that wages are also growing in “real” terms.

Prior to the economic downturn, the number of Nevadans employed full-time topped out at nearly 1.1 million, based upon results from the Current Population Survey (CPS). At this peak level, full-time employment represented about 83 percent of the total. Silver State residents employed part-time numbered approximately 225,000. During the recession, full-time employment fell to about 831,000, for a cyclical decline of more than 230,000. As would be expected in times of economic uncertainty, part-time employment actually rose, resulting in a gain of nearly 90,000 positions between mid-2006 and mid-2011 and totaling over 300,000 jobs.

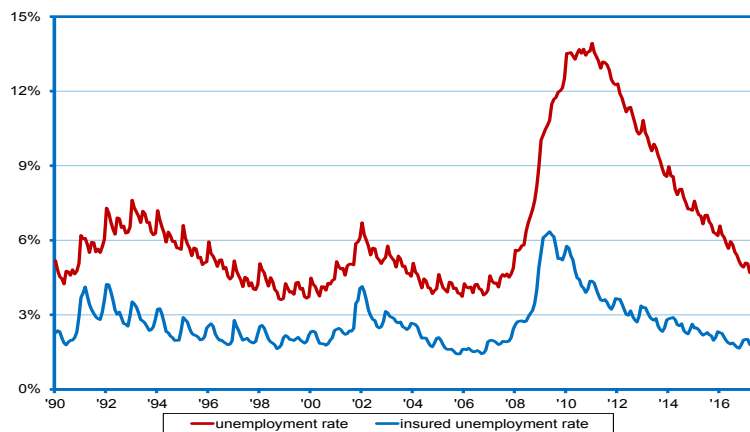
Since the economic trough, full-time employment has risen. In May, employees with full-time status totaled 1,025,000; a gain of 194,000 from recessionary lows. The number of Nevadans employed on a part-time basis, on the other hand, is up slightly, coming in at approximately 322,000 in May. While there is still room for improvement, Nevada’s employment gains have been concentrated in full-time positions during the economic recovery. Currently, 76.1 percent of total employment is full-time, while part-time positions account for 23.9 percent.

The U.S. Bureau of Economic Analysis (BEA)

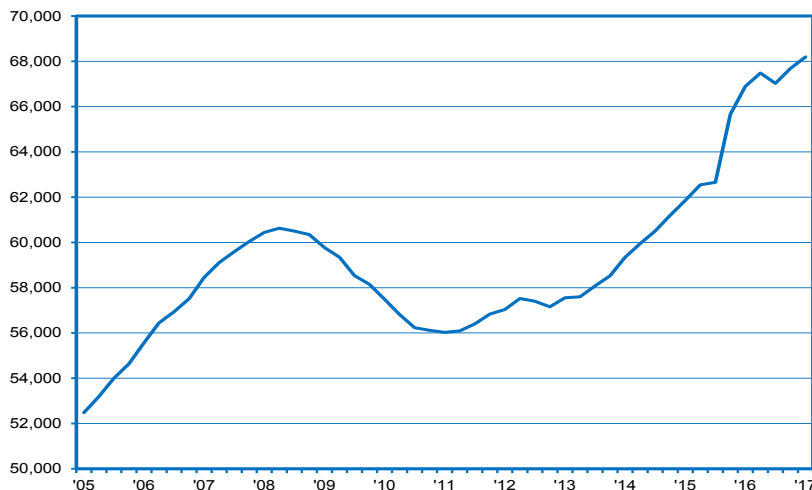
Unemployment Rate for Teens and Young Adults Trending Down, but Still High Relative to Others



Nevada’s Insured Unemployment Rate at Post-Recession Low; Difference Between Unemployment Rate Still Larger than in Past



of Employers Reaches Another New High; 23 Consecutive Quarters of Year-Over-Year Growth



Economic Summary

recently released 2016:IVQ state gross domestic product (GDP) information, the broadest measure of economic activity. As defined by the BEA, GDP totaled over \$128 billion (in 2009 dollars) in 2016 in Nevada. While the Silver State's economy has been on the rise since 2011, the value of "real" economic activity, measured in inflation-adjusted terms, remains slightly below pre-recession levels. For all of 2016, Nevada's GDP grew 2.4 percent. This compares to 1.5 percent nationwide and translates into the eighth-strongest growth rate in the U.S. The Silver State's economic growth has exceeded the national average in each of the past seven quarters. In 2016:IVQ, Nevada's economy grew at a 3.1 percent clip, compared to 1.8 percent in the nation as a whole. These encouraging trends have contributed to relatively strong labor market conditions in the State, as measured by a declining unemployment rate, a downtrend in unemployment insurance activity, and an uptrend in employment growth.

Nevada's unemployment rate remained steady in May at 4.7 percent, just 0.4 percentage point higher than the national rate. This is the second month in a row that the unemployment rate in the Silver State has remained nine full percentage points below the recessionary peak of 13.7 percent. Further, May's reading represents an over-the-year decline of 1.1 percentage points, and the 68th consecutive month of year-over-year declines of one point or more. Based upon recent trends, we expect this month's over-the-year decline to be amongst the strongest in the nation.

Information from the CPS allows for the analysis of the unemployment rate across various age groups in the Silver State. The unemployment rate tends to be higher for the 16-24 year old group, which includes teens and young adults. Before the recession, the unemployment rate for this age group averaged

9.5 percent (expressed as a 12-month moving average); this was about six percentage points higher compared to other age cohorts. Teens and young adults were the most affected by the downturn. The unemployment rate for this group peaked at 23 percent during the recession, roughly ten points higher than that for other age cohorts. As the recovery unfolded, the unemployment rate for all groups started to decrease. In May, teens and young adults have an unemployment rate of 9.9 percent, which is over five percentage points higher than the other age groups.

The State's "official" unemployment rate is the focus of much attention. It is designed to estimate the share of the labor force accounted for by those without a job and who are actively searching for work, regardless of whether they are receiving unemployment insurance (UI) benefits. The insured unemployment rate (IUR) is more focused. It measures the share of individuals receiving UI benefits relative to the total number of employees covered by UI. Hence, it deals with a smaller "population" than does the official rate. Nevada's IUR has historically tracked the State's unemployment rate, but at a lower level. This is due to differences in who is included in each measure. The IUR excludes persons not eligible for benefits, individuals who have exhausted their benefits, and those that were eligible but did not file for benefits. The unemployment rate measure includes these individuals, as long as they are actively searching for employment opportunities.

The IUR in Nevada peaked at 6.4 percent in mid-2009 as employers in Nevada made significant layoffs. Many of these employees were initially captured in the IUR. However, when these claimants exhausted their benefits, they dropped out of the insured unemployed measure. This led to a widening gap between Nevada's unemployment rate and its insured un-

employment rate. With Nevada's unemployment rate nearly 14 percent at peak, the difference between the two rates was over nine percentage points for a period of time. As Nevada has moved further along in its recovery, the difference between the two rates has shrunk. In May, Nevada's insured unemployment rate was 1.7 percent. This is three percentage points lower than the unemployment rate, the lowest "gap" during the post-recession period.

Initial claims for unemployment insurance (UI) continued to improve in May, totaling 10,100 in the month. This is a five percent decline compared to May of last year and is the 11th month out of the last 12 where Nevada has seen year-over-year declines in claims. Overall, initial claims levels, as measured by the 12-month moving average, stand at 11,150, the lowest seen in Nevada since late 2006. Measures of UI activity, such as the exhaustion rate and average duration, continued their trend of post-recession lows in the month, with respective values of 36.7 percent and 13.7 weeks. Looking ahead, initial claims are likely to rise seasonally in June.

The number of employers in the Nevada UI system totaled 68,190 during 2017:IQ, increasing by 510 employers, or 0.75 percent, from 2016:IVQ. This is another record high for the Silver State. On a year-over-year basis, employer counts in Nevada increased by 1,300, or nearly two percent. This is the 23rd consecutive quarter of year-over-year growth. From the recessionary low of 56,000 employers, Nevada has seen the number of employers grow by 12,190, a 21.7 percent increase. Employer totals are now 7,560, or 12.5 percent, higher than they were at the pre-recession peak, further evidence that Nevada's labor market has recovered from the impacts of the downturn, though additional room remains for improvement.

Economic Summary

With “real-time” labor market information obtained as part of DETR’s Silver State Solutions Initiative, we can provide an alternative assessment of the health of the State’s economy via an analysis of current online job posting activity¹.

There have been 93,500 online ads posted for jobs in Nevada year to date, compared to 95,900 over the same period last year. Job ad volume has been increasing month-over-month in 2017, from 15,200 in January to 21,000 in May, but is still 2.4 percent lower than the same time last year. Some of this difference is likely attributable to Craigslist, a major source of online job ads, expanding job posting fees to all of their U.S. markets. With unemployment below five percent and job gains of 35,000 over the year, we are not viewing the slight decline in over-the-year job ads as a turning point for the overall health of the economy in the Silver State.

- Hayley Smith-Kirkham, Economist

¹ Online job posting volume does not necessarily correlate with the level of job openings or hiring. Internal company hiring and union hiring are often not captured by online ads. High ad volume often occurs for occupations/industries that are having difficulty finding qualified candidates, high turnover positions/recurring openings, or when companies are building large candidate pools. Online job postings should only be used with caution when developing/analyzing time series trends due to the constant changes in the rate of online advertising usage and in the methods used for collecting the data.

Sub-State Economic Summary

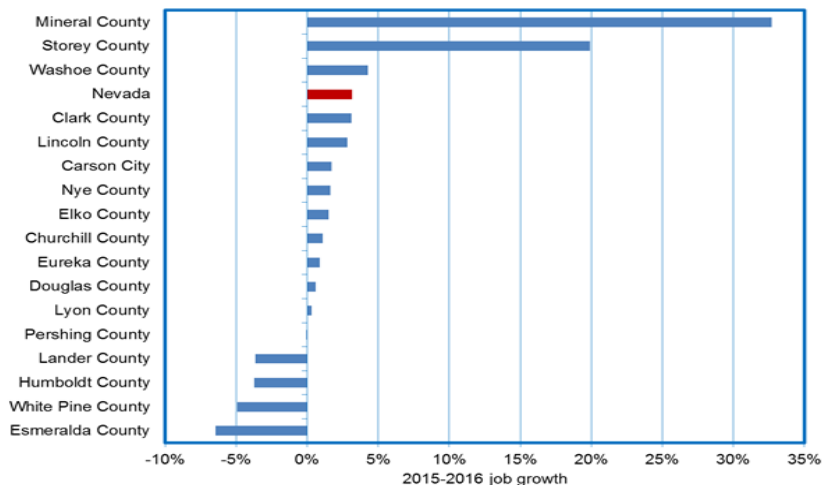
Statewide, job growth eased in May. This is not at all surprising, in light of the relatively strong gains recorded in April. A “correction” was expected. Much the same is true in the Silver State’s three major population centers. All of the State’s metropolitan statistical areas (MSAs) realized over-the-month employment declines in May. Las Vegas was expected to increase employment by 2,400 jobs, but only gained 1,100. This translates into a decline of 1,300 jobs, after seasonal adjustment. Reno decreased its seasonally-adjusted employment by 1,000; the result of adding 500 jobs when an increase of 1,500 was expected. Carson City realized the addition of 200 jobs when 300 was expected, leading to a seasonally-adjusted decrease of 100 jobs.

Statewide job levels increased by 35,000 jobs since May of 2016, a growth rate of 2.7 percent. Although all of the State’s population centers decreased in over-the-month employment, job growth remains positive on year-over-year basis. Las Vegas jobs are up 2.9 percent over the year, a nominal increase of 27,300 jobs. 8,100 goods-producing and 19,400 service-providing jobs attributed to the gain¹. Reno also realized a 2.9 percent growth rate, totaling 5,800 new jobs. The region saw the addition of 4,500 jobs to service-providing industries and 1,400 jobs to goods-producing industries. Carson City attained a 1.8 percent job growth rate by adding 500 jobs, 400 of which were service-providing.

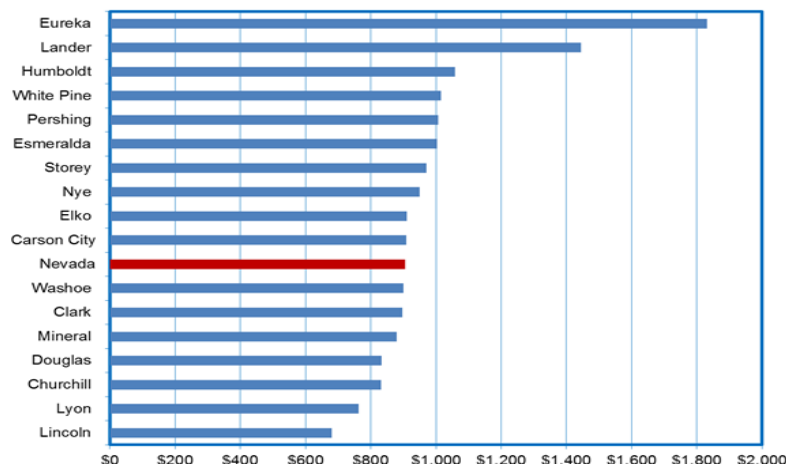
A location quotient (LQ) can be used to express how concentrated an occupation is in a region as compared to the nation. An LQ of one indicates that an area has the same concentration of a specific occupation as the national average, whereas a value of less than one indicates a lower concentration, and a value greater than one indicates a higher concentration. This month we focus on the concentration of retail salespersons employment in Nevada’s counties relative to the nation. Statewide, the LQ for retail salespersons is 1.21, showing that the Silver State’s share of employment in this occupation is higher (by more than one-fifth) than the nation. In that the LQ for the retail trade industry is just barely above one, suggesting that the share of employment in that sector is essentially identical to the national average, this is somewhat perplexing, at least on the surface. One possible explanation revolves around a relatively high presence of retail salespersons in other sectors of the Nevada economy, espe-

¹ References to total MSA employment are adjusted for seasonality, whereas references to goods-producing and service-providing industries are not.

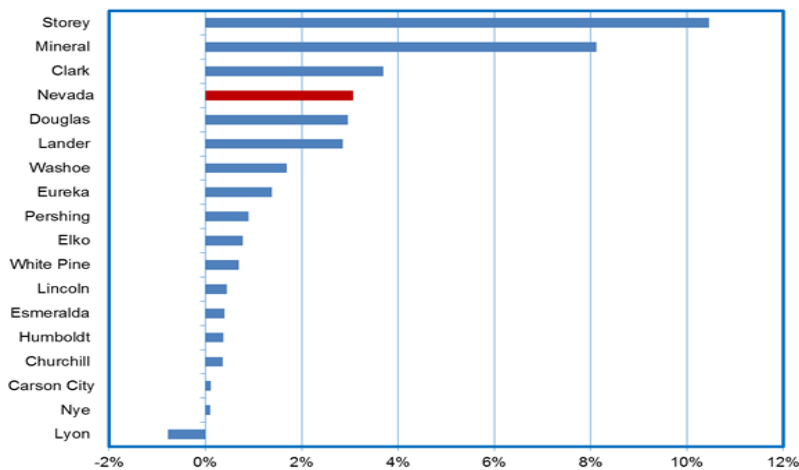
12 of 17 Counties Realize Job Gains from 2015 to 2016; Mineral, Storey, and Washoe Lead the Way



Eureka/Lander/Humboldt/White Pine Pay Highest Weekly Wages in Nevada



Almost All Counties Realize Pay Increases from 2015 to 2016; Storey, Mineral, and Clark lead the Way



Sub-State Economic Summary

cially in leisure and hospitality.

Clark has the highest LQ for retail salespersons, with a value 1.32. This means that there are 32 percent more retail salespersons employed in the county than would be expected according to national averages. The lowest LQ's are found in Eureka, Esmeralda and Lander, suggesting that these counties have relatively low employment in the occupation.

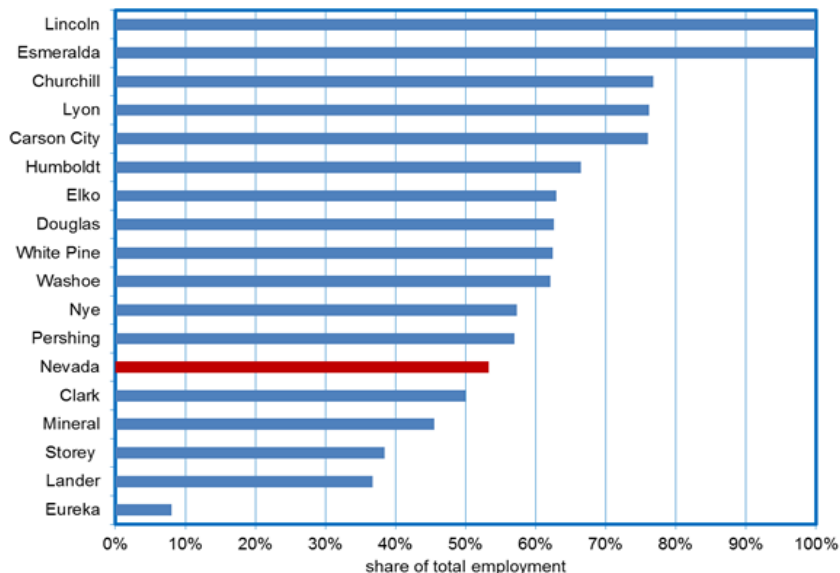
As of 2016, employment in firms with less than 100 employees (our definition of "small business") accounted for 53.3 percent of total private sector employment in Nevada. Small business establishments account for more than half of total employment in 13 of 17 counties. The lowest rates are Eureka and Lander at eight percent and 36.8 percent respectively. This is attributable to large mining operations in these counties. In Esmeralda and Lincoln counties, 100 percent of employment is in establishments with less than 100 employees in the absence of any large employers in these counties. As for Nevada's major population centers, Clark comes in at 50 percent, slightly below the Statewide average. Carson City is 76 percent and Washoe is 62.1 percent, both higher than in the State as a whole.

In the Quarterly Census of Employment and Wages (QCEW) Program, the Research and Analysis Bureau collects and compiles employment and wage data for workers covered by Nevada unemployment insurance laws, and federal civilian workers covered by Unemployment Compensation for Federal Employees.

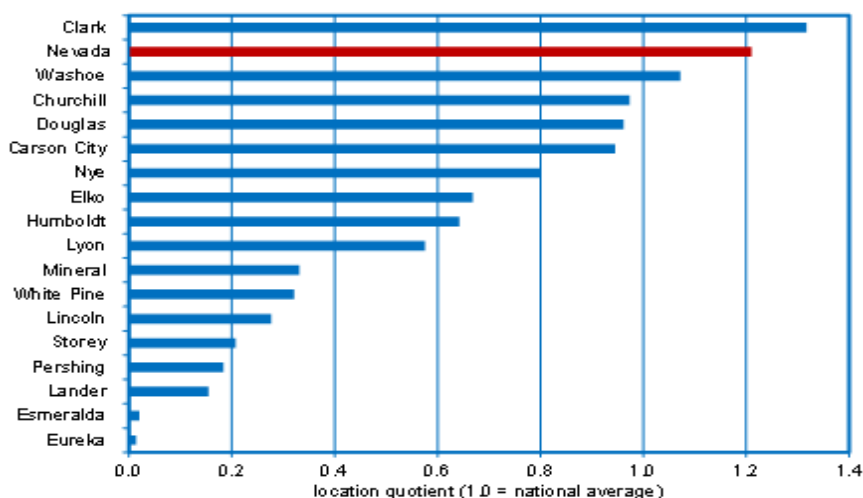
Based upon this information, Nevada wages average \$906 per week, as of 2016. Weekly wages range from \$680 (Lincoln) to \$1,830 (Eureka). Six counties have payrolls above \$1,000 per week. This can be attributed to the high concentration of mining jobs in these counties (Esmeralda, Eureka, Humboldt, Lander, Pershing, and White Pine). As for Nevada's major population centers, Carson City lies above the State average at \$909. Clark County and Washoe County fall slightly below the State average at \$897 and \$901, respectively.

The most recent QCEW information shows that average weekly wages in Nevada as a whole increased 3.1 percent from 2015 to 2016. Change in weekly wages range from -0.8 percent (Lyon) to 10.5 percent (Storey). Sixteen of 17 counties experienced an increase in average weekly wages. In Storey County, this is likely due to an increase in construction. As for Nevada's major population centers, Clark saw wage increases greater than the Silver State at 3.7 percent. Wages in Washoe are up 1.7 percent, while Carson City wages grew just

Small Business Comprise More than 50% of Total Employment in 13 of 17 Counties; 100% in Lincoln and Esmeralda; Small Share in Eureka; Clark Right at 50%



Clark and Washoe Have Highest Concentration of Retail Salesperson Employment; Share of Jobs Accounted for by Retail Salespersons is Above the National Average.



Sub-State Economic Summary

0.1 percent.

The most recent QCEW information also shows that total employment in Nevada as a whole increased 3.2 percent from 2015 to 2016. Job growth ranged from -6.5 percent in Esmeralda to 33 percent in Mineral County. As for Nevada's major population centers, Carson City, at 1.7 percent, falls below the Statewide average. Clark experienced a growth rate nearly identical to that for the Silver State, at 3.1 percent. Washoe is above Statewide growth, at 4.3 percent.

At the county level, initial claims for unemployment insurance (UI) continue to reflect the declines seen Statewide. Year-to-date, total initial claims are down in all but two counties compared to the same period last year. Eleven of these counties have seen claims fall by ten percent or more so far this year. The largest nominal declines have come in Nevada's largest counties, with Clark falling by 4,030 claims and Washoe falling by 690 claims compared to last year's total. Of the two counties not seeing a decline in UI claims, only Storey has seen an increase from last year. White Pine has seen no change in the number of initial claims.

Metro area unemployment rates varied on a month-over-month basis but decreased year-over-year². For the first time since late-2007, all MSAs in the Silver State have unemployment rates below five percent in May. Las Vegas and Reno mirrored last month's rates and remained at 4.8 percent and 3.9 percent, respectively. From the same time last year, the jobless rate in Las Vegas declined by one percentage point and Reno's decreased by 1.1 percentage points. Carson City's rate declined to 4.7 percent, down 0.3 percentage

point relative to April and 1.2 percentage points over-the-year.

Unemployment rates decreased on an over-the-year basis in all 17 of the State's counties. Rate declines ranged from 1.8 percentage points (Pershing) to 0.6 percentage point (White Pine) and dropped by a minimum of one percentage point in 14 of 17 counties in May. Eureka marked the State's lowest unemployment rate at 2.8 percent. Notable rates below four percent were realized in Esmeralda (3.1), Elko (3.4), Humboldt (3.7), White Pine (3.8), Washoe (3.9), and Lincoln (3.9) counties. Nevada's highest unemployment rate belongs to Nye at six percent, followed by Lyon at 5.4 percent and Mineral at 5.1 percent, respectively.

Year-to-date online job posting activity is up in 14 of 17 counties³. For the fifth consecutive month, Douglas has seen the largest positive nominal change with 700 more online job postings year-to-date. Elko (+640), White Pine (+330), and Nye (+220) continue to experience large gains. The State's largest population centers continue to realize over-the-year declines. Clark's job postings decreased more than any other county (-3,300) at 62,700 ads, down from 66,000 during the same time last year. Washoe posted 15,000 job ads, but decreased by 2,600. Carson recorded 3,300 job ads which amounted to 180 less than last year. Metro area job posting declines continue to be impacted by the recent implementation of job ad posting fees on Craigslist. Despite the adverse effect from Craigslist's posting fees, Statewide year-to-date online job ad volume remains encouraging and rural county job posting activity holds consistent.

- Jason Gortari, *Economist*

² The State's seasonally adjusted unemployment rate is 4.7 in May, unchanged from April and down from 5.8 percent in May 2016. Unemployment rates for the State's metropolitan areas and counties reported here are not adjusted for seasonality. Hence, comparisons to the State's seasonally adjusted rate should be avoided. Legitimate comparisons, however, can be made to the State's unadjusted rate - 4.6 in May, unchanged from April and down from 5.7 percent in May 2016.

³ Online job postings are obtained through DETR's Silver State Solutions initiative. Online job posting volume does not necessarily correlate with the level of job openings or hiring. Internal company hiring and union hiring are often not captured by online ads. High ad volume often occurs for occupations/industries that are having difficulty finding qualified candidates, high turnover positions/recurring openings, or when companies are building large candidate pools. Online job postings should only be used with caution when developing/analyzing time series trends due to the constant changes in the rate of online advertising usage and in the methods used for collecting the data.

Trends at a Glance

Industrial Employment

May

- Total seasonally adjusted jobs = -6,500
- Las Vegas seasonally adjusted jobs = -1,300
- Reno seasonally adjusted jobs = -1,000
- Carson City seasonally adjusted jobs = -100

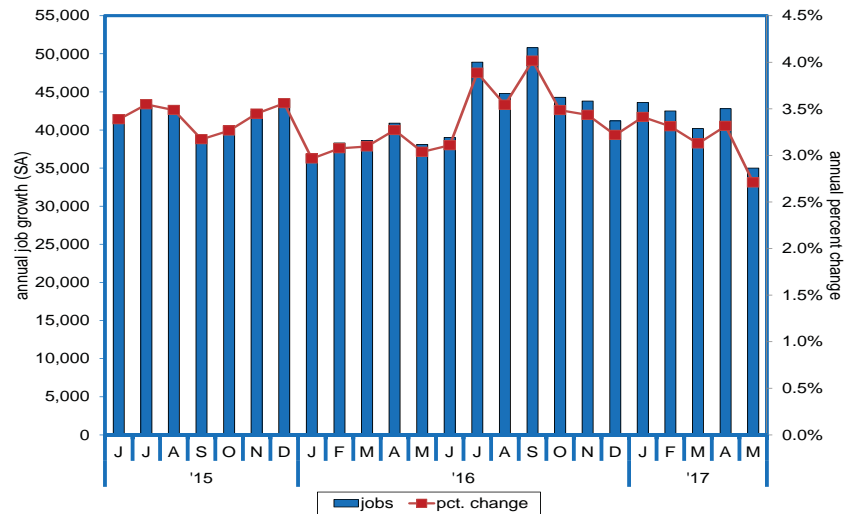
**Nevada Nonfarm Jobs
Seasonally Adjusted Change**

	Unadjusted Change	Expected Seasonal Movement	Seasonally Adjusted Change
Total Nonfarm Jobs	2,500	9,000	-6,500
Private Sector	1,900	9,300	-7,400
Public Sector	600	-300	900
Las Vegas	1,100	2,400	-1,300
Reno	500	1,500	-1,000
Carson City	200	300	-100

May

- 1,327,000 non-farm jobs
- 35,000 jobs added over-the-year
- April marks 77 straight months of growth in Nevada.

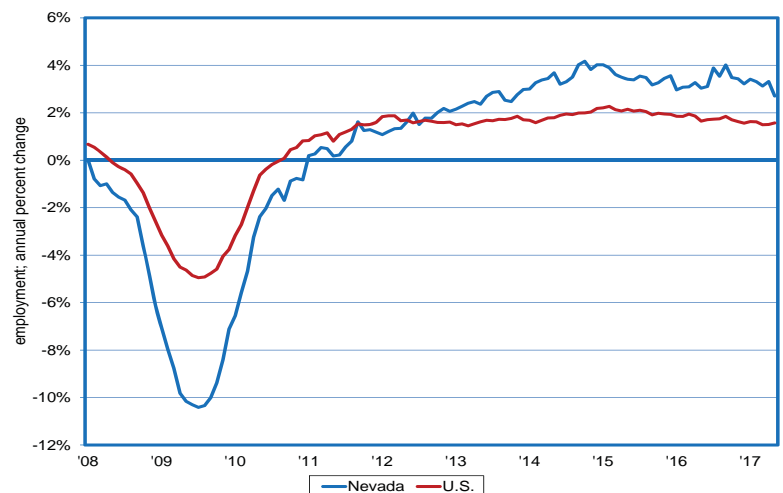
**Nevada Job Growth
(Seasonally Adjusted)**



May

- Nevada = 2.7 percent
- U.S. = 1.6 percent
- Growth in Nevada has exceeded that in the U.S. for 58 straight months.

**Job Growth: Nevada vs. U.S.
(Year-Over-Year Percent Change; Seasonally Adjusted)**



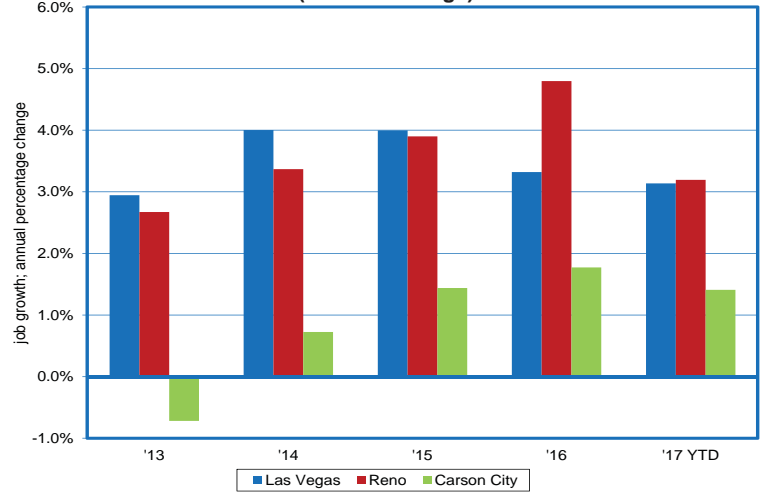
Trends at a Glance

Industrial Employment

May

- Las Vegas MSA = 3.1 percent year-to-date
- Reno-Sparks MSA = 3.2 percent year-to-date
- Carson City = 1.4 percent year-to-date

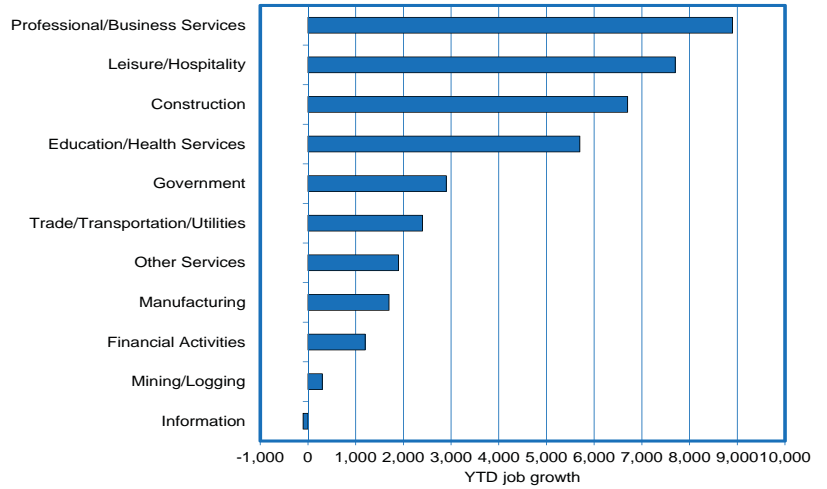
**Job Growth by Region
(Percent Change)**



May

- Professional/Business Services added 8,900 jobs, more than any other sector.
- Ten sectors added jobs through April with only Information declining
- Total job growth = 39,300 jobs

**Job Growth by Industry
(Year-to-Date)**



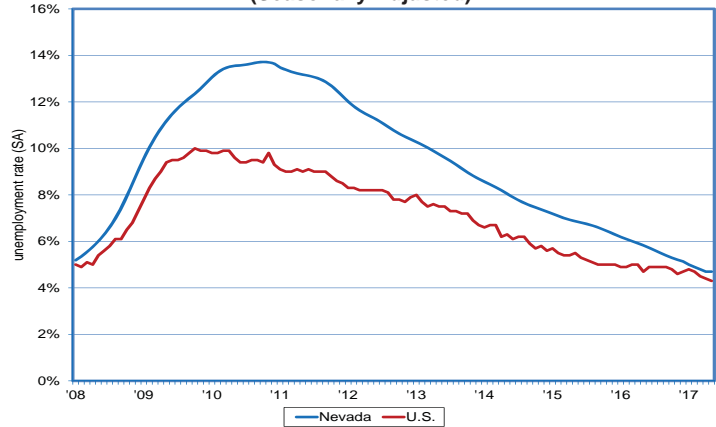
Trends at a Glance

Unemployment

May

- Nevada = 4.7 percent; unchanged from April; down from 5.8 percent a year ago.
- U.S. = 4.3 percent; down 0.1 percentage point from April; down from 4.7 percent a year ago.
- 0.4 point gap between Nevada and the Nation compares to 4.4 points at the height of the recession.

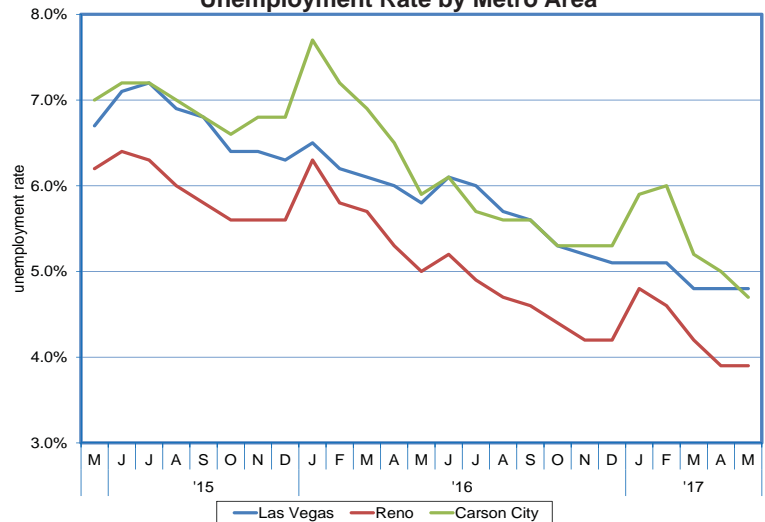
Unemployment Rate: Nevada vs. U.S.
(Seasonally Adjusted)



May (Not Seasonally Adjusted)

- Nevada = 4.6 percent; down 1.1 percentage points from May 2016.
- Las Vegas-Paradise MSA = 4.8 percent; down one percentage points from May 2016.
- Reno-Sparks MSA = 3.9 percent; down 1.1 percentage point from May 2016.
- Carson City = 4.7 percent; down 1.2 percentage points from May 2016.

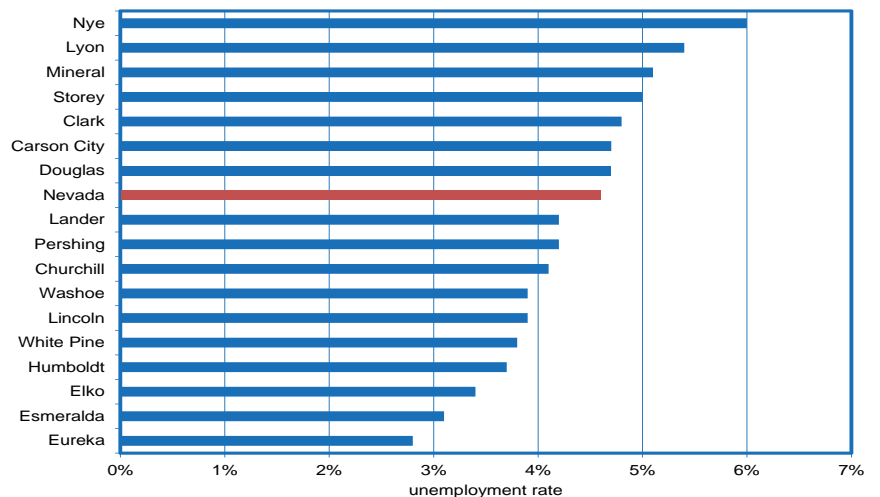
Unemployment Rate by Metro Area



May (Not Seasonally Adjusted)

- Unemployment rates ranged from six percent (Nye) to 2.8 percent (Eureka).
- Clark = 4.8 percent; Washoe = 3.9 percent; Carson City = 4.7 percent.

Unemployment Rate by County



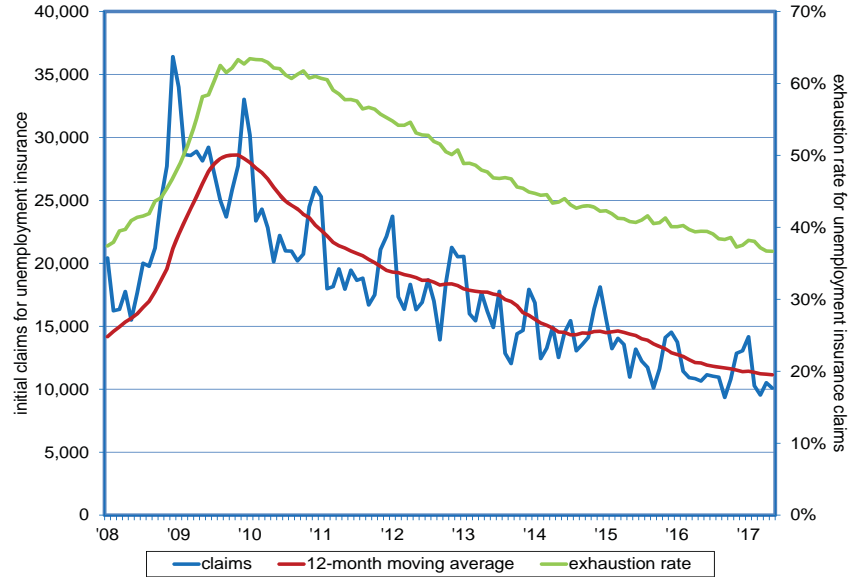
Trends at a Glance

Unemployment

May

- Initial claims = 10,100
- Exhaustion rate (the percentage of unemployment insurance claimants who exhausted UI benefits prior to finding a job) = 36.7 percent.

Nevada Unemployment Insurance: Initial Claims and Exhaustion Rate



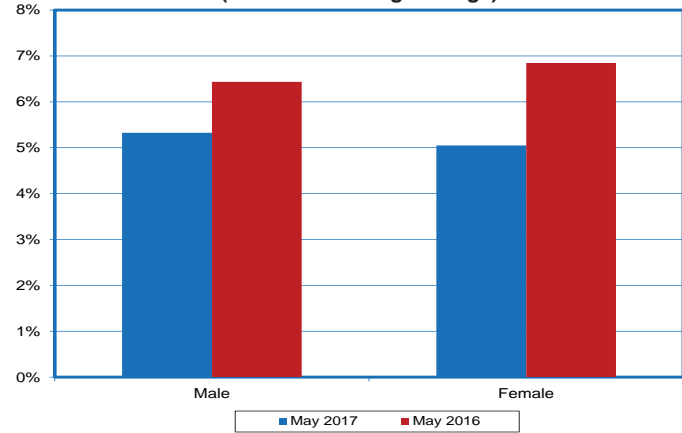
Trends at a Glance

Demographics of the Unemployed

May

- Male unemployment rate = 5.3 percent; down 0.3 percentage point from April; down 1.1 percentage point from a year ago.
- Female unemployment rate = five percent; down 0.2 percentage point from April; down 1.8 percentage points from a year ago.

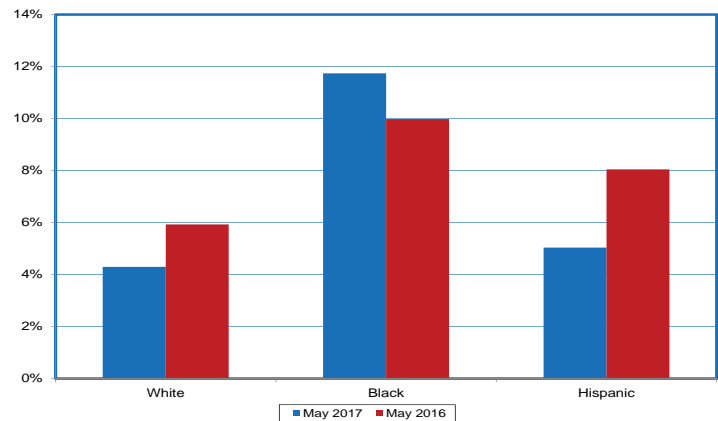
Unemployment Rate by Gender
(12-Month Moving Average)



May

- White unemployment rate = 4.3 percent; down 0.1 percentage point from April; down 1.6 percentage points from a year ago.
- Black unemployment rate = 11.7 percent; down 0.1 percentage point from April; up 1.7 percentage points from a year ago.
- Hispanic unemployment rate = five percent; down 0.1 percentage point from April, down three percentage points from a year ago.

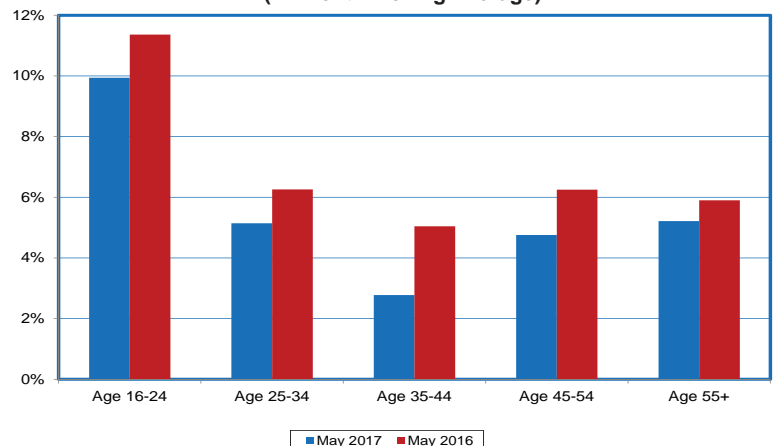
Unemployment Rate by Ethnicity
(12-Month Moving Average)



May

- Age 16-24 unemployment rate = 9.9 percent; up 0.2 percentage point from April; down 1.5 percentage points from a year ago.
- Age 25-34 unemployment rate = 5.1 percent; down 0.4 percentage point from April; down 1.2 percentage points from a year ago.
- Age 35-44 unemployment rate = 2.8 percent; down 0.4 percentage point from April; down 2.2 percentage points from a year ago.
- Age 45-54 unemployment rate = 4.8 percent; unchanged from April; down 1.5 percentage points from a year ago.
- Age 55+ unemployment rate = 5.2 percent; down 0.3 percentage points from April; down 0.7 percentage point from a year ago.

Unemployment Rate by Age Group
(12-Month Moving Average)



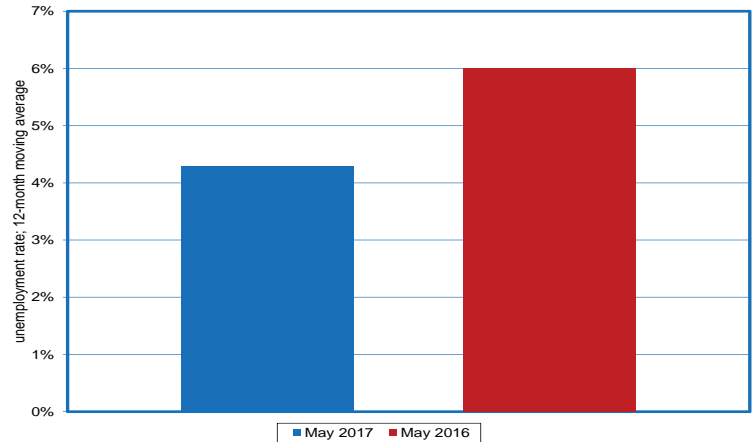
Trends at a Glance

Demographics of the Unemployed

May

- Veteran unemployment rate = 4.3 percent; down 0.1 percentage point from March; down 1.7 percentage points from a year ago.

**Unemployment Rate by Veterans' Status
(12-Month Moving Average)**



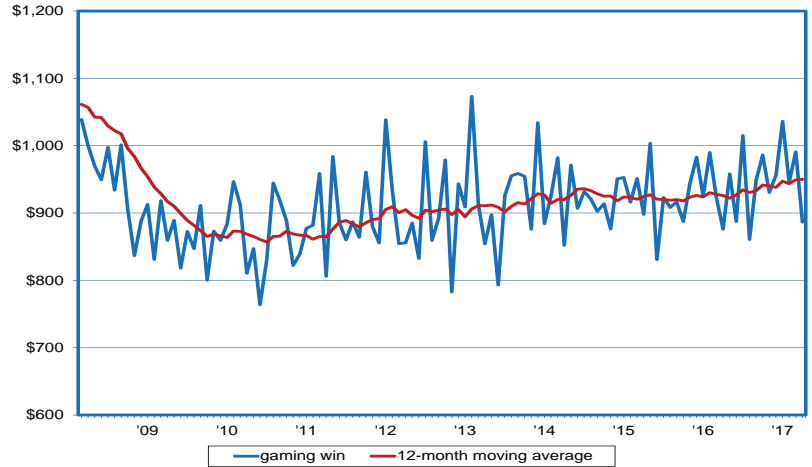
Trends at a Glance

Economic Indicators

April

- Gross gaming win = \$886 million
- Up 1.2 percent year-over-year; up 3.9 percent year-to-date over 2016.

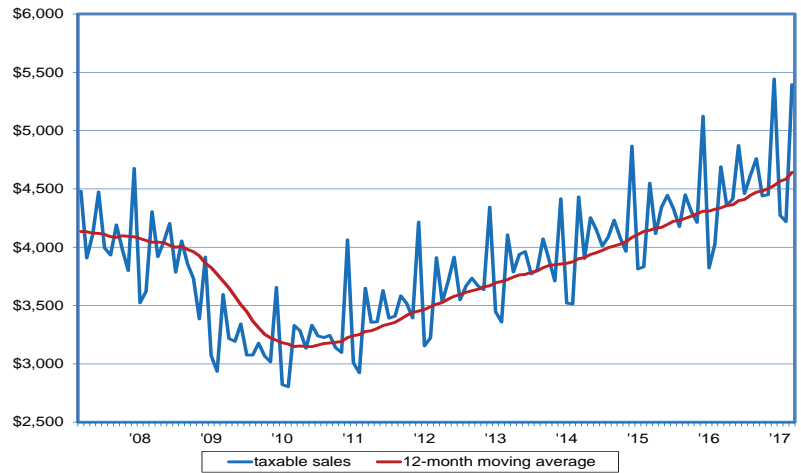
Nevada Gross Gaming Win
(Millions of Dollars)



March

- Taxable sales = \$5.39 billion
- Up fifteen percent year-over-year

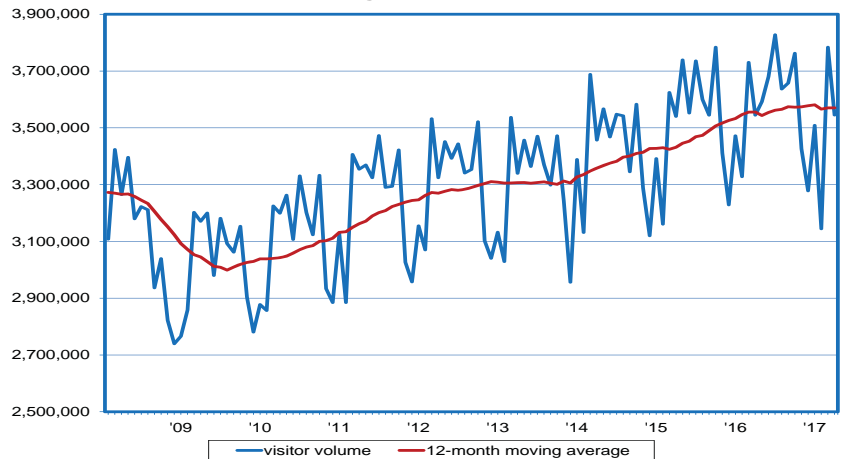
Statewide Taxable Sales
(Millions of Dollars)



April

- 3,545,000 visitors
- 600 visitor increase from prior year; down 0.7 percent year-to-date over 2016.

Las Vegas Visitor Volume



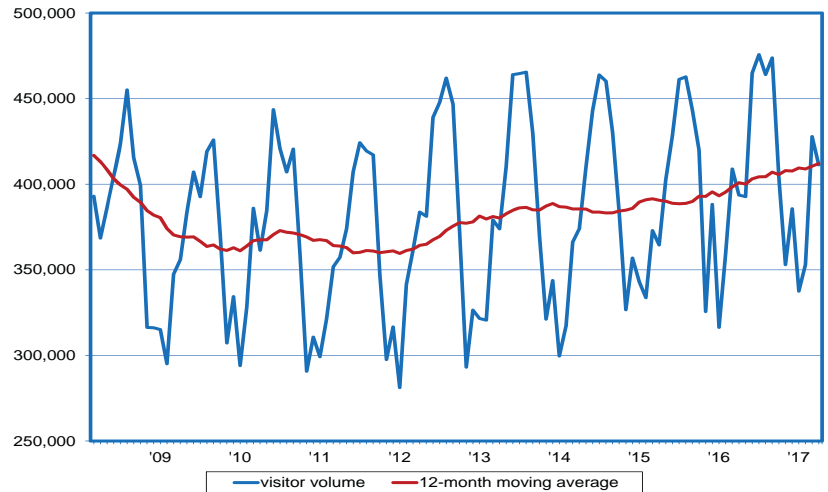
Trends at a Glance

Economic Indicators

April

- 411,000 visitors
- 18,000 visitor increase from prior year (4.5 percent); up 3.5 percent year-to-date over 2016.

Reno Visitor Volume



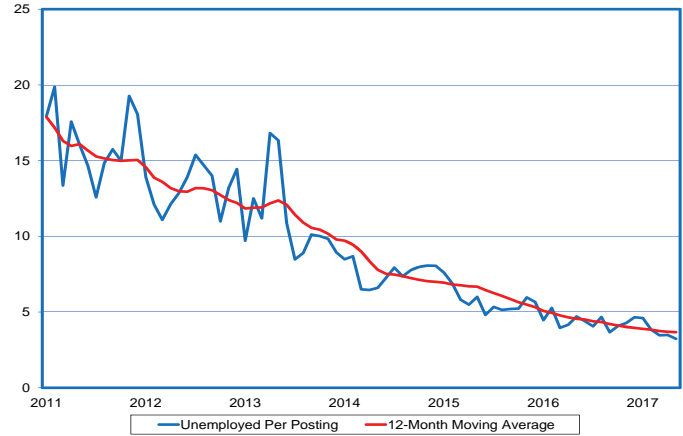
Trends at a Glance

Real-Time Labor Market Information

May

- For every job posting there are 3.2 unemployed persons, down from 4.7 in April 2016.

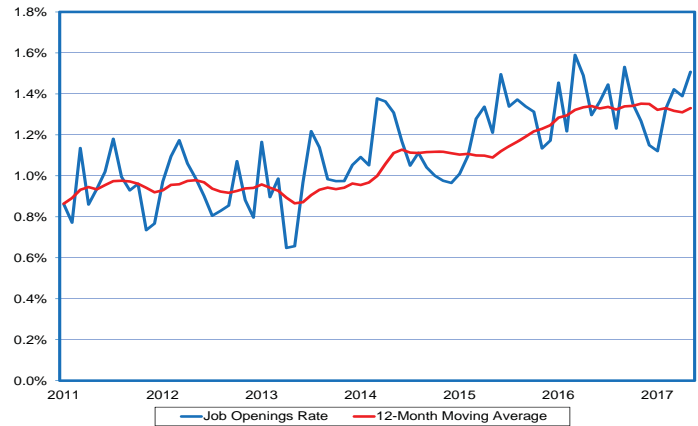
Unemployed per Online Job Posting



May

- Jobs became available at a rate of 1.51 percent, indicating employment prospects are trending up.
- The job openings rate is the ratio of the number of online job postings to the sum of job postings and employment.

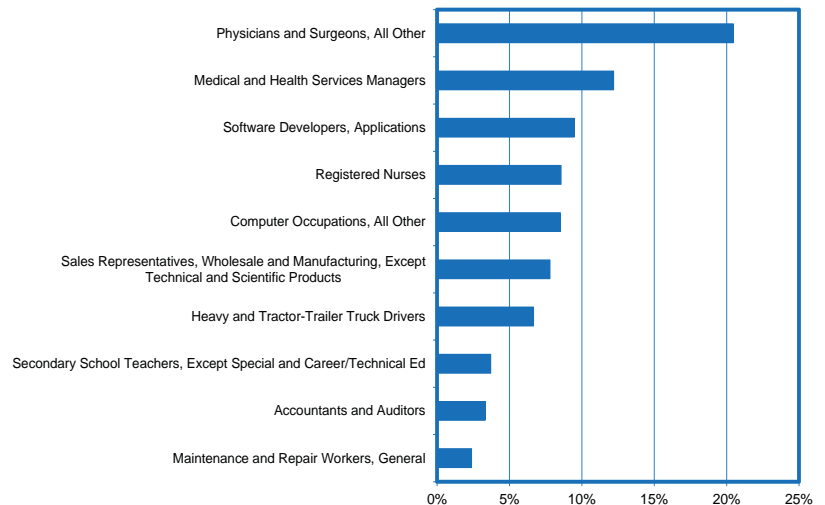
Job Openings Rate



May

- For occupations earning above-average wages, physicians/surgeons have the highest job openings rate.

**Occupations with Above Average Wages
Job Openings Rates for Online Postings**



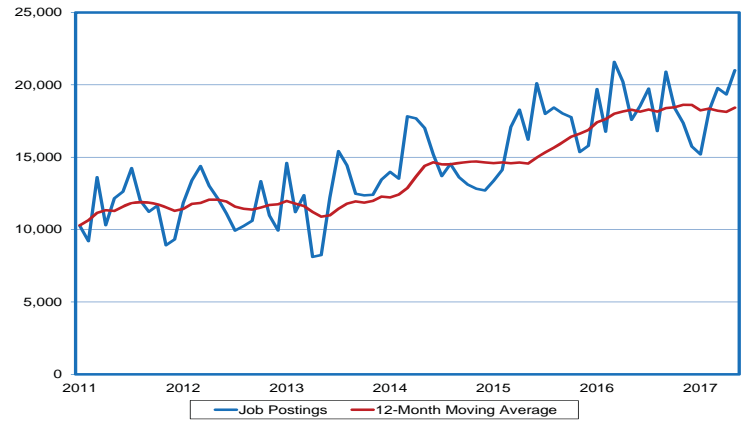
Trends at a Glance

Real-Time Labor Market Information: Spotlight on Nevada

May

- Nevada online job postings total 21,000; up from 17,600 a year ago.

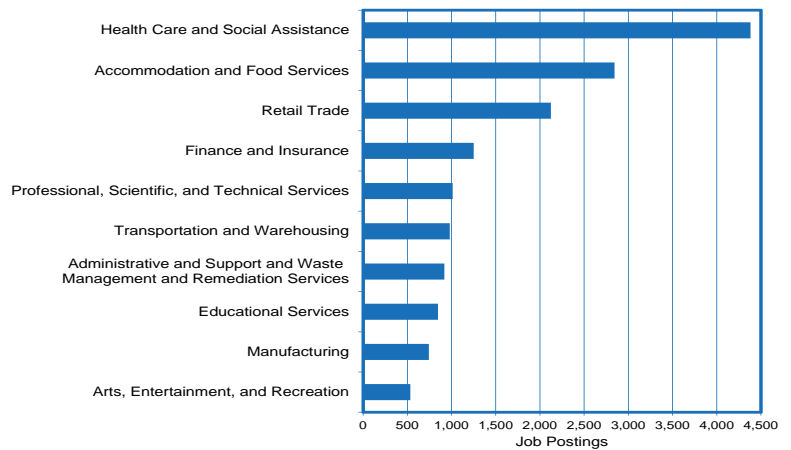
Nevada Job Postings



May

- The industries with the most postings are health care/social assistance followed by accomodation/food services.

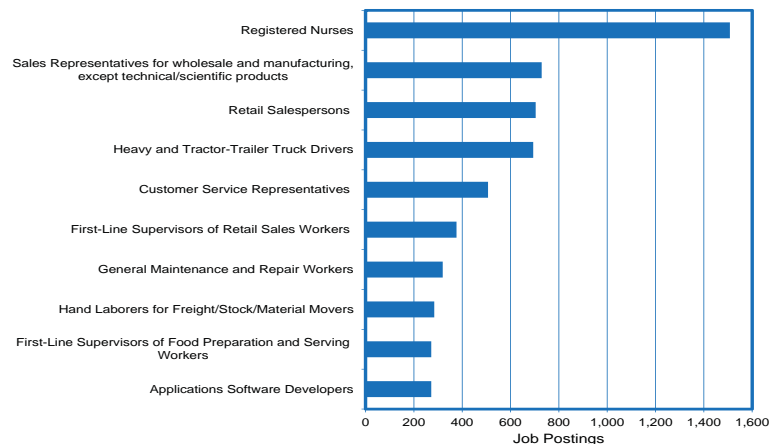
Top Industries



May

- The top occupations in demand are registered nurses, followed by sales representatives

Top Occupations



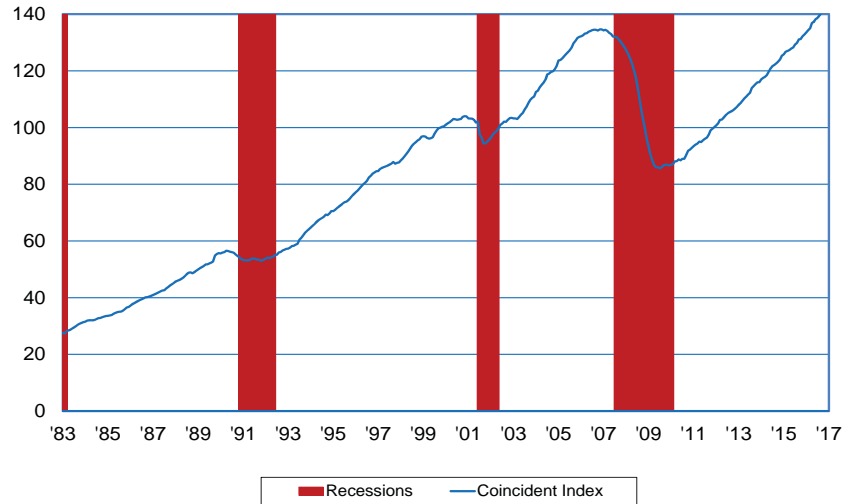
Trends at a Glance

CBER-DETR Nevada Coincident and Leading Employment Indexes

April

- The Nevada Coincident Employment Index measures the ups and downs of the Nevada economy using an index of employment variables. The peak of the last employment cycle in Nevada occurred in March 2007. The coincident index then regressed steadily through October 2009, where it bottomed out.
- The April release tells a nearly consistent, positive story for both the coincident and leading indexes on a year-over-year basis. For the coincident index, the unemployment rate (inverted), household employment, nonfarm employment, and the insured unemployment rate (inverted) all moved in a positive direction.
- for the coincident index, the insured unemployment rate (inverted), the unemployment rate (inverted), and household employment all moved in a positive direction, while nonfarm employment moved in a negative direction.

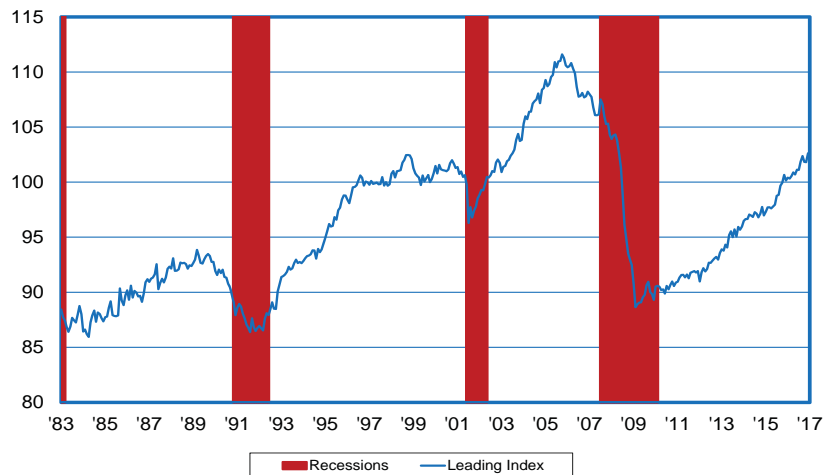
CBER-DETR Nevada Coincident Employment Index



April

- The Nevada Leading Employment Index measures the ups and downs of the Nevada economy, providing a signal about the future direction of the coincident index. For the current employment recession, the leading index provided a clear signal by peaking in January 2006, fourteen months before the coincident index reached its peak, and reached a bottom in May 2009, five months before the coincident index reached its bottom.
- For the leading index, initial claims for unemployment insurance (inverted), the short-duration unemployment rate (inverted), construction employment, the real 10-year Treasury interest rate (inverted), commercial permits, and housing permits all moved in a positive direction.
- For the leading index, initial claims for unemployment insurance (inverted), construction employment, housing permits, commercial permits, and the short-duration unemployment rate (inverted) moved in a positive direction, while the real 10-year Treasury interest rate (inverted) moved in a negative direction.

CBER-DETR Nevada Leading Employment Index



Economy In Brief

Research & Analysis Bureau

The Nevada Economy in Brief provides a wealth of Nevada workforce and economic information and is published monthly by the Nevada Department of Employment, Training and Rehabilitation / Research and Analysis Bureau. Material contained in this publication is produced in cooperation with the U.S. Department of Labor (the Bureau of Labor Statistics and the Employment and Training Administration) and may be reproduced without permission. Please credit the Nevada Department of Employment, Training and Rehabilitation. For additional workforce or other economic information, a free subscription to the Nevada Economy in Brief, or to change your e-mail address, please contact the Research and Analysis Bureau.

Don Soderberg, Director
Bill Anderson, Chief Economist
Christopher Robison, Supervising Economist

Prepared by the Research and Analysis Bureau

Phone: (775) 684-0450	nevadaworkforce.com
Fax: (775) 684-0342	nevadajobconnect.com
E-mail: detr@nvdetr.org	nvdetr.org
	nvcis.intocareers.org



Please recycle