

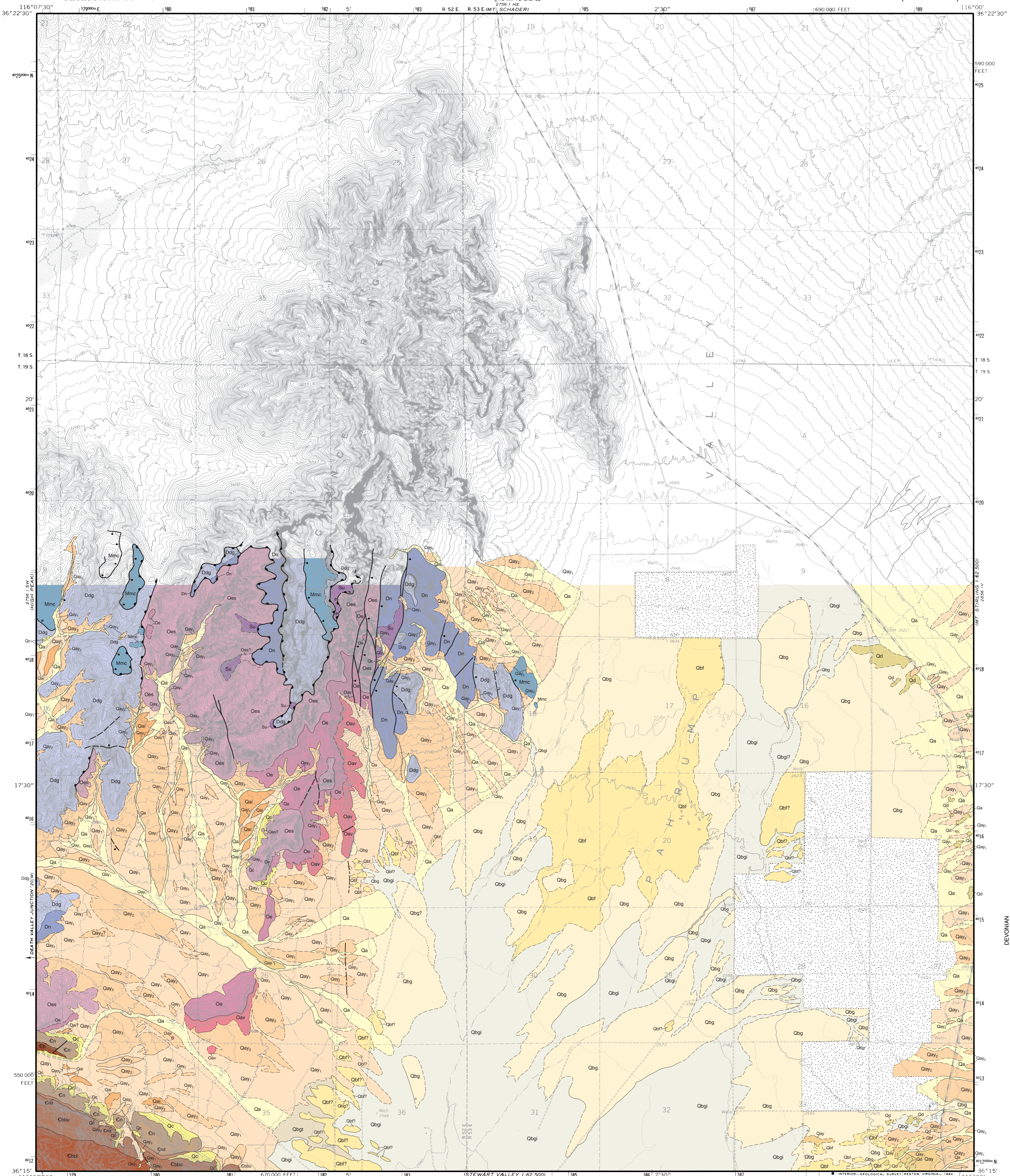
2756 1/4 NW 1/4
KAMAROGA FLAT 7

UNITED STATES
DEPARTMENT OF THE INTERIOR
GEOLOGICAL SURVEY

Prepared as part of the STATEMAP component of the National Cooperative Geologic Mapping Program in cooperation with the U.S. Geological Survey
and in cooperation with the Nye County Department of Natural Resources and Federal Facilities

LAST CHANCE RANGE QUADRANGLE
NEVADA—NYE CO.
7.5 MINUTE SERIES (TOPOGRAPHIC)

OPEN-FILE REPORT 03-14
NEVADA BUREAU OF MINES AND GEOLOGY



- Alluvial Fan Deposits**
- Qa Active alluvium
 - Qc Young colluvial deposits
 - Qay Young alluvial deposits
 - Qay1 Later younger alluvium
 - Qay2 Earlier younger alluvium
 - Qai Intermediate age alluvium
- Basin Deposits**
- Qd Younger sand dune deposits
 - Qbgt Young transitional basin/fan deposits
 - Qbgi Intermittently active youngest basin deposits
 - Qbg Youngest basin deposits (late Holocene)
 - Qbf Young basin deposits (late Holocene)
- Bedrock Deposits**
- Mmc Monte Cristo Formation
 - Ddg Devils Gate Formation
 - Dn Nevada Formation
 - Su undivided Silurian deposits
 - Oes Ely Springs Formation
 - Oe Eureka Quartzite
 - Oav Pogonip Group; Antelope Limestone
 - Cn Nopah Formation
 - Cnd Nopah Formation; Dunderberg Shale
- Bonanza King Formation**
- Cb Bonanza King Formation; undifferentiated
 - Cbbu Banded Mountain Member, upper part
 - Cbbi Banded Mountain Member, lower part

References

Barnes, H., and Palmer, A.R., 1961. Revisions of stratigraphic nomenclature of Cambrian rocks, Nevada Test Site and vicinity. U.S. Geological Survey Professional Paper 424-C, p. C100-C103.

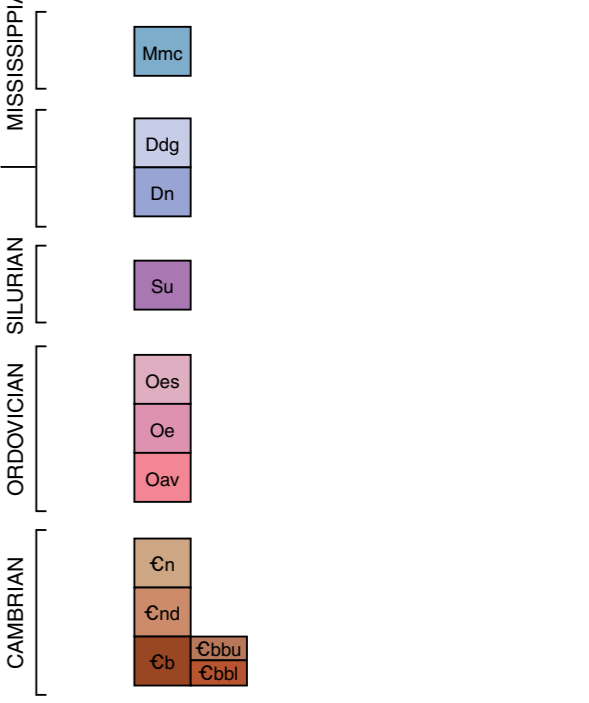
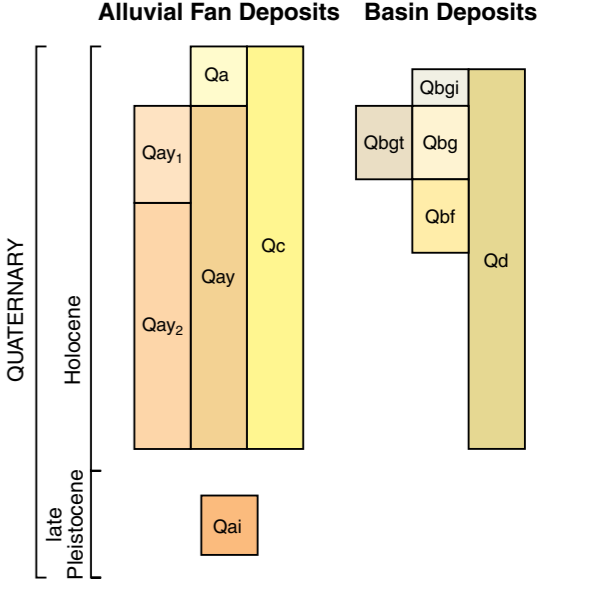
Burchfiel, B.C., Hamill, G.S., IV, and Wilhelm, D.E., 1982. Stratigraphy of the Montgomery Mountains and the northern half of the Nopah and Resting Springs Ranges, Nevada and California. Geological Society of America Map and Chart Series MC-44, 1:62,500.

dePolo, C.M., Ramelli, A.R., and Bell, J.W., 1999. Geologic map of the Pahrump Quadrangle, Nevada: Nevada Bureau of Mines and Geology, Open-File Report 99-14, 1:24,000.

Lundstrom, S.C., Mahan, S.A., Blakey, R.J., Paces, J.B., Young, O.D., and Dixon, G.L., in prep. Geologic map of the Mount Spring Quadrangle, Nye and Clark Counties, Nevada and California. U.S. Geological Survey, MF map.

Malmberg, G.T., 1967. Hydrology of the valley-fill and carbonate-rock reservoirs, Pahrump Valley, Nevada-California. U.S. Geological Survey Water-Supply Paper 1832.

- Lithologic contact** Dashed where inferred or approximately located; short dashes indicate internal contact between same unit; queried where uncertain.
- Normal-slip fault** Bar and ball on downthrown side; dashed where inferred or approximately located; dotted where concealed.
- Strike-slip fault** Dashed where inferred or approximately located; dotted where concealed.
- Low angle normal fault** Dashed where approximately located; queried where uncertain; dotted where concealed.
- Lineament** Determined from aerial photography.
- Areas of significant disturbance due to cultivation.**



Field work done in 2002. Bedrock geology modified from Burchfiel and others (1982).

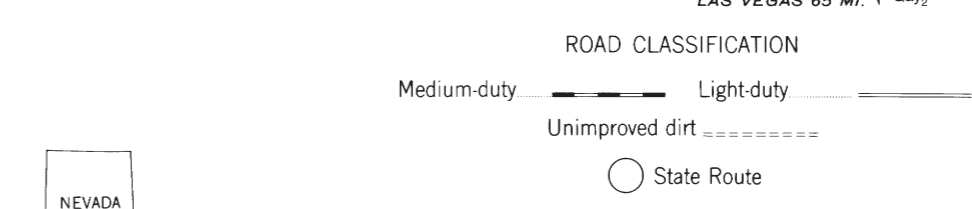
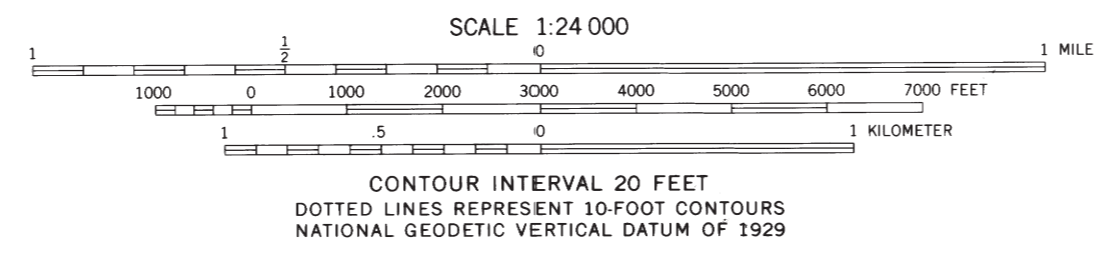
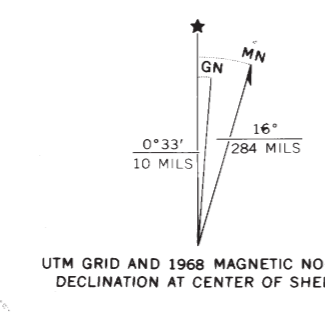
DRAFT
Preliminary geologic map.
Has not undergone office or field review.
May be revised before publication.

First Edition, first printing 2002.
Printed by Nevada Bureau of Mines and Geology (11/20/02) at Reno, NV.
Edited by Robert Chaney

The geologic mapping was supported by the U.S. Geological Survey STATEMAP Program (Agreement No. 01-HQ-PA-0003), and the Nye County Department of Natural Resources and Federal Facilities.

Nevada Bureau of Mines and Geology
University of Nevada, Mail Stop 178
Reno, Nevada 89507-0008
(775) 784-6691, ext. 2
www.bmg.unr.edu; rbgmaps@unr.edu

Mapped, edited, and published by the Geological Survey
Control by USGS and USC&GS
Topography by photogrammetric methods from aerial photographs taken 1964. Field checked 1968
Polyconic projection. 1927 North American datum
10,000-foot grid based on Nevada coordinate system, central zone
1,000-meter Universal Transverse Mercator grid ticks, zone 11, shown in blue
To place on the predicted North American Datum 1983 move the projection lines 6 meters north and 77 meters east as shown by dashed corner ticks



**PRELIMINARY GEOLOGIC MAP OF THE SOUTHERN HALF OF THE
LAST CHANCE RANGE QUADRANGLE, NYE COUNTY, NEVADA**
Craig M. dePolo and Alan R. Ramelli
2002

THIS MAP COMPLIES WITH NATIONAL MAP ACCURACY STANDARDS
FOR SALE BY U. S. GEOLOGICAL SURVEY, DENVER, COLORADO 80225, OR RESTON, VIRGINIA 22092
A FOLDER DESCRIBING TOPOGRAPHIC MAPS AND SYMBOLS IS AVAILABLE ON REQUEST