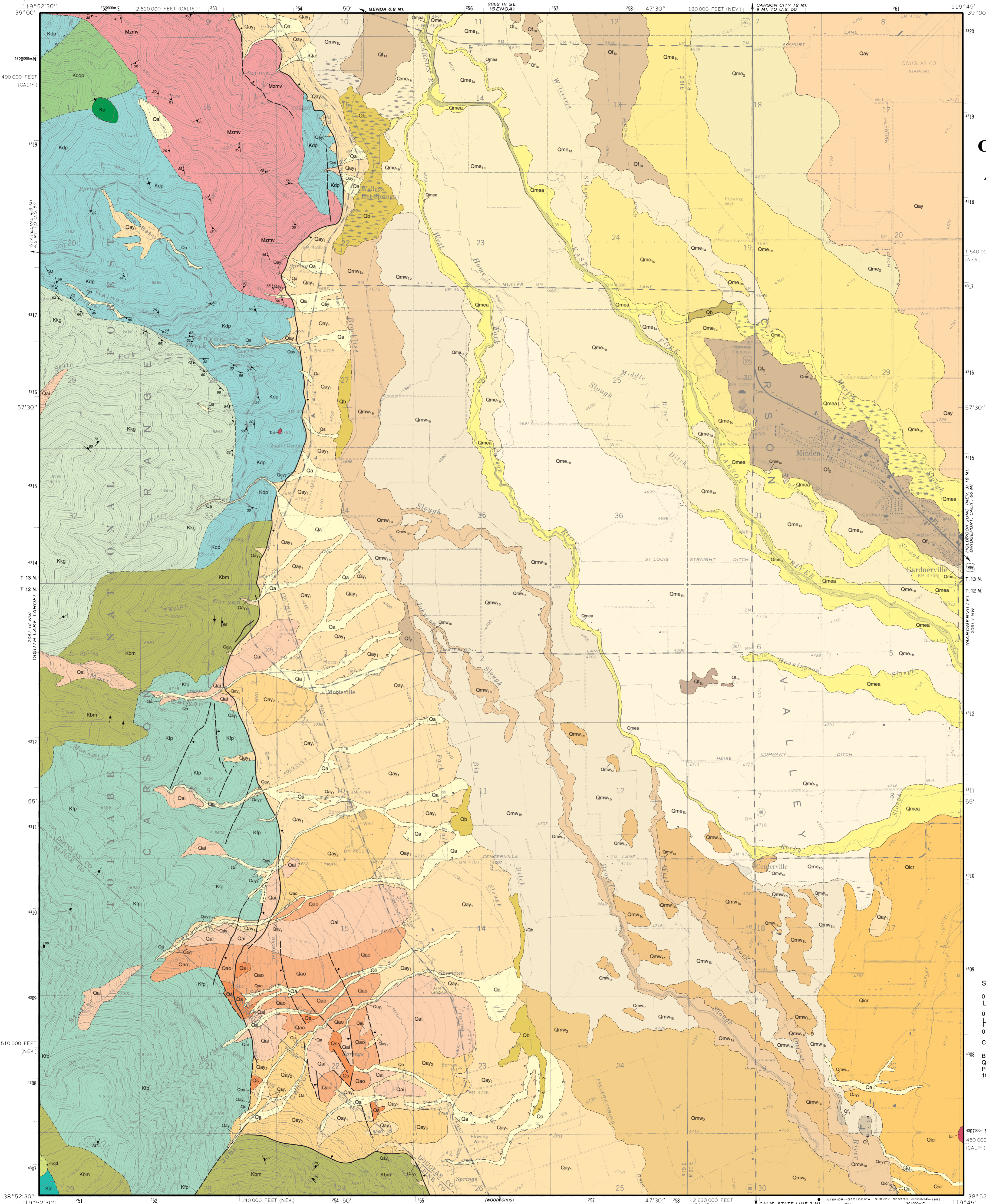


PRELIMINARY GEOLOGIC MAP OF THE MINDEN QUADRANGLE, DOUGLAS COUNTY, NEVADA, ALPINE COUNTY, CALIFORNIA

Alan R. Ramelli, James C. Yount, David A. John, Larry J. Garside
2003



- ALLUVIAL DEPOSITS OF CARSON RIVER**
- Meander-belt deposits of East Fork Carson River**
- Omea Recently active meander-belt deposits (late Holocene to Historic)
 - Ome1 Young East Carson meander-belt deposits
 - Ome1a (late Holocene)
 - Ome1b (late Holocene)
 - Ome1c (mid- to late Holocene)
 - Ome2 Older East Carson meander-belt deposits (early Holocene to latest Pleistocene)
- Meander-belt deposits of West Fork Carson River**
- Omw1 Young West Carson meander-belt deposits
 - Omw1a (late Holocene)
 - Omw1b (late Holocene)
 - Omw1c (early to late Holocene)
 - Omw2 Older West Carson meander-belt deposits (early Holocene to latest Pleistocene)
- Floodplain deposits of East and West Forks Carson River**
- Qf1 Young floodplain deposits
 - Qf1a (late Holocene)
 - Qf1b (late Holocene)
 - Qf2 Older floodplain deposits (latest Pleistocene)
- Undivided deposits of East and West Forks Carson River**
- Qlcr Intermediate age Carson River deposits (late Pleistocene)
- ALLUVIAL FAN DEPOSITS**
- Qa Active alluvium (modern)
 - Qay Young alluvium (Holocene to latest Pleistocene)
 - Qay1 (mid- to late Holocene)
 - Qay2 (late Pleistocene to early Holocene)
 - Qai Intermediate age alluvium (late Pleistocene)
 - Qao Older alluvium (middle to late Pleistocene)
- Other Alluvial deposits**
- Qb Basin deposits (Holocene)
 - Qs Spring deposits (Holocene to late Pleistocene)
- Bedrock unit names and contacts from Armin and others (1983) with additions by L. J. Garside and David A. John.**
- Tai Hornblende andesite intrusive rocks
 - Ka Aplitite
 - Kbrn Bryan Meadow Granodiorite (Upper Cretaceous)
 - Kkg Granodiorite of Kingsbury Grade (Upper Cretaceous)
 - Kdp Granodiorite of Daggett Pass (Cretaceous)
 - Kfp Free Peak granodiorite (Upper Cretaceous)
 - Kjc Quartz Diorite of Jobs Canyon
 - Kqdp Quartz monzodiorite north of Daggett Pass (Cretaceous?)
 - Kqd Quartz diorite and diorite
 - Mzmv Metamorphosed volcanic rocks (Mesozoic)

Contact Dashed where approximately located; queried where uncertain.

Fault Dashed where approximately located or inferred; dotted where concealed; queried where uncertain; ball on downthrown side.

Strike and dip of beds
 30° Inclined

Strike and dip of metamorphic foliation
 30° Inclined Vertical

Strike and dip of joints
 30° Inclined Vertical

Scale 1:24,000

0 0.5 1 kilometer

0 0.5 1 mile

0 1000 2000 3000 4000 5000 feet

CONTOUR INTERVAL 40 FEET

Base map: U.S. Geological Survey Minden, NV 7.5' Quadrangle, 1982
 Polyconic projection: Nevada Coordinate System, west zone
 1927 North American Datum

Field work 2002-2003.
 Geologic mapping was supported by the U.S. Geological Survey STATEMAP Program (Agreement No. 01-HG-AG-0037).
DRAFT
 Preliminary geologic map.
 Has not undergone office or field review.
 May be revised before publication.

First Edition, first printing, 2003.
 Printed by Nevada Bureau of Mines and Geology
 Edited by Robert Chaney
 Cartography by Robert Chaney
 Nevada Bureau of Mines and Geology
 University of Nevada, Mail Stop 178
 Reno, Nevada 89557-0088
 (775) 784-6691, ext. 2
 www.nbmg.unr.edu; nbmg-sales@unr.edu