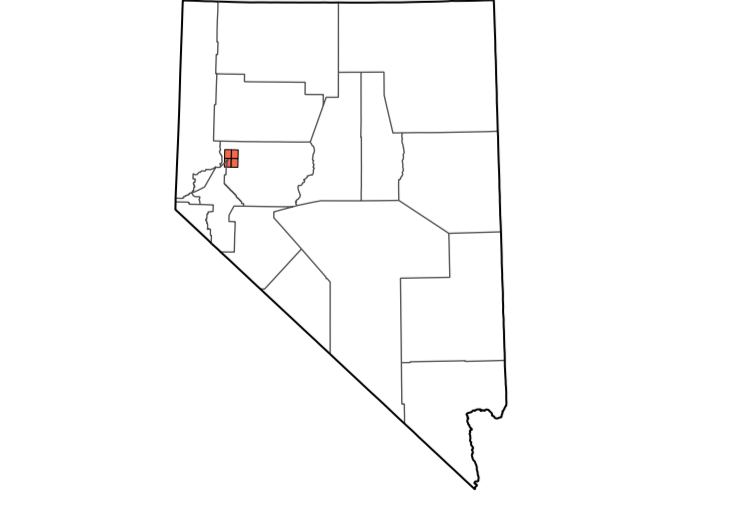


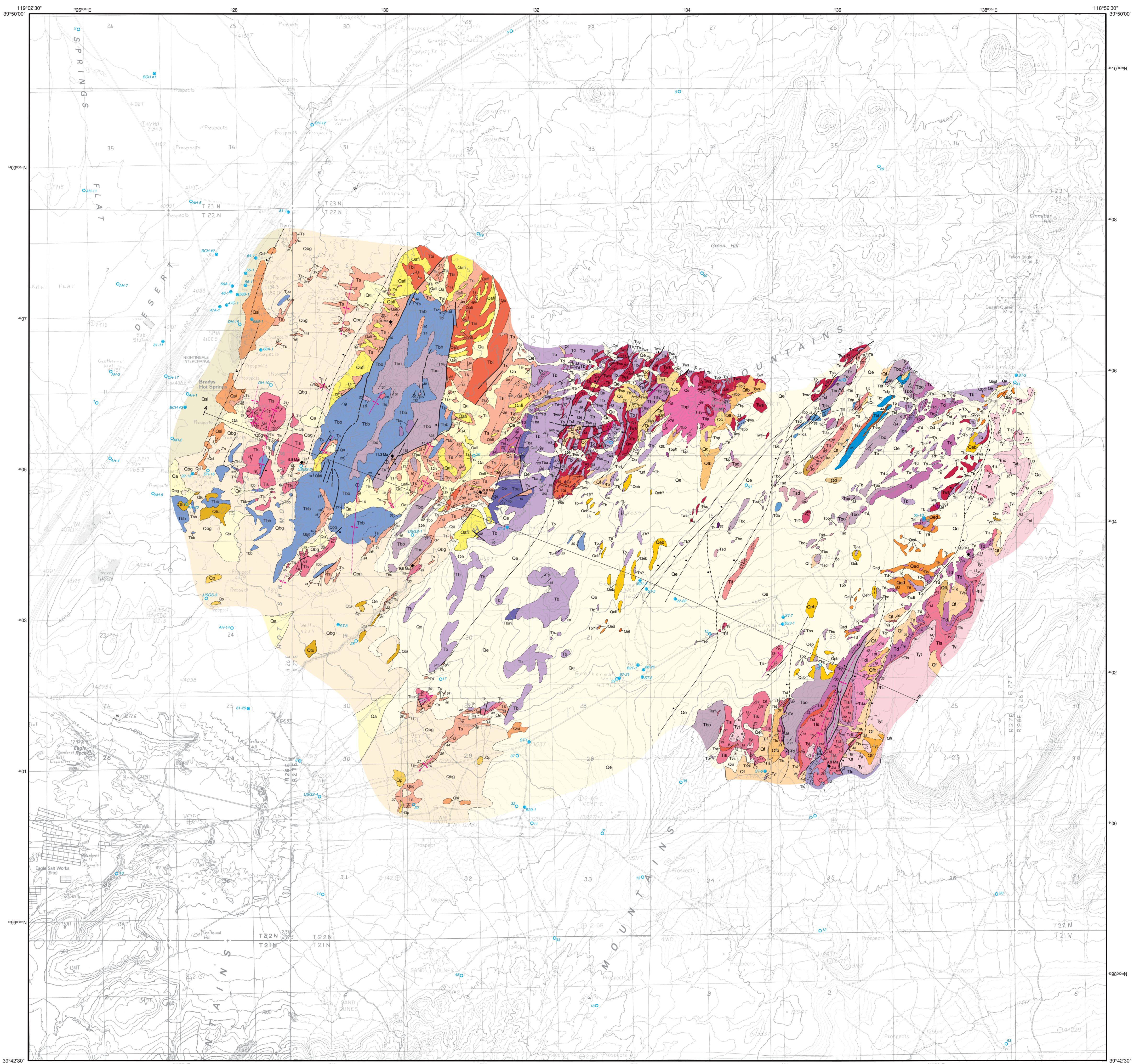
- Qa** Quaternary alluvium
- Qc** Quaternary colluvium
- Qd** Sand dunes
- Qdp** Surface with conspicuous desert pavement
- Alluvial fan surfaces**
- Qaif** Intermediate-age alluvial fan deposits (Qaif)
- Qf** Undifferentiated (Qf)
- Qfb** mainly basaltic clasts
- Qfl** mainly limestone clasts
- Qfr** mainly rhyolite clasts
- Qe** Eolian sands
- Qed** Eolian sands with diatomite or siltstone clasts (Qed), basalt clasts (Qeb), tuff clasts (Qet), or limestone/tuffa (Qel)
- Qsi** Sinter
- Qp** Pans
- Qbg** Beach gravels (Qbg), Pebble conglomerate composed of Tyt clasts (Qbgf)
- Qbu** Tufa
- Qcr** Calcrete
- Qsl** Lacustrine? sand and silt
- Tyt** Aphyric, flame-rich ash-flow tuff, sparse plagioclase, feldspar, and lesser sanidine phenocrysts.
- Tbop** Porphyritic basalt boulders
- Tbp** Porphyritic basalt; abundant plagioclase phenocrysts
- Tly** Younger limestone
- Tcv** Calcite vein
- Tb** Younger aphanitic basalt lavas
- Tst** Tuffaceous siltstone
- Tws** White siltstone with lesser diatomite
- Tgs** Gray shale
- Td** Diatomite, locally divided into upper and lower members
- Tdu** Upper member
- Tdl** Lower member
- Tvs** Volcaniclastic sandstone
- Ts** Lacustrine sedimentary rocks
- Tsd** Interbedded diatomite, siltstone, and limestone
- Tcg** Conglomerate, mainly basalt clasts
- Tsl** Slightly silicified siltstone and diatomite
- Tlc** Carbonate clastics
- Tls** Older limestone
- Tbs** Basaltic sandstone and lavas
- Tbo** Older aphanitic basalt lavas, undifferentiated
- Tba** Altered basalt lavas
- Tbb** Basaltic flow breccia
- Tbpi** Porphyritic basalt intrusions
- Tbi** Aphanitic basalt intrusions
- Tu** Tertiary undifferentiated
- Tr** Rhyolite lavas
- Tbt** Bedded tuff
- Tas** Sandstone
- Tbrv** Rock avalanche breccia
- Tfl** Finely porphyritic plagioclase-rich ash-flow tuff
- Trl** Lithic-rich aphyric ash-flow tuff
- Tru** Lower part of lithic-rich ash-flow tuff
- Tda** Dacite and andesite lavas
- Lithologic Units Observed in Wells:**
- Tr** Andesite lavas
- Tru** Rhyolite lavas
- Td** Rhyodacite undifferentiated
- Trl** Tuffaceous rocks
- Tru** Rhyolite tuff undifferentiated (at least 2 intervals)
- Tdl** Rhyodacite lavas
- Tda** Dacitic tuff (2-3 intervals)
- Tru** Rhyolite-dacite tuffs and lavas undifferentiated
- Mzu** Mesozoic basement undifferentiated
- Jmv** Jurassic? metavolcanic rock
- Jms** Jurassic? metasedimentary rock
- Jls** Jurassic limestone
- Jmu** Jurassic metamorphic rock undifferentiated

- Contact** Dashed where approximately located, short dashes for contacts within map units.
- Fault** Showing dip, dashed where approximately located, dotted where concealed, ball on downthrown side.
- Anticline axial trace** Showing plunge, dashed where inferred or approximately located; dotted where concealed.
- Syncline axial trace** Showing plunge, dashed where inferred or approximately located; dotted where concealed.
- Lineament** Determined from aerial photography.
- Strike and dip of bedding or flows**
- Approximate strike and dip of bedding or flows**
- Strike and dip of compaction foliation in ash-flow tuff**
- Strike and dip of flow banding or flow foliation in volcanic rocks**
- Strike and dip of joints**
- Tephra correlation**
- Well location**

- Strike and dip of bedding or flows**
- Approximate strike and dip of bedding or flows**
- Strike and dip of compaction foliation in ash-flow tuff**
- Strike and dip of flow banding or flow foliation in volcanic rocks**
- Strike and dip of joints**
- Tephra correlation**
- Well location**

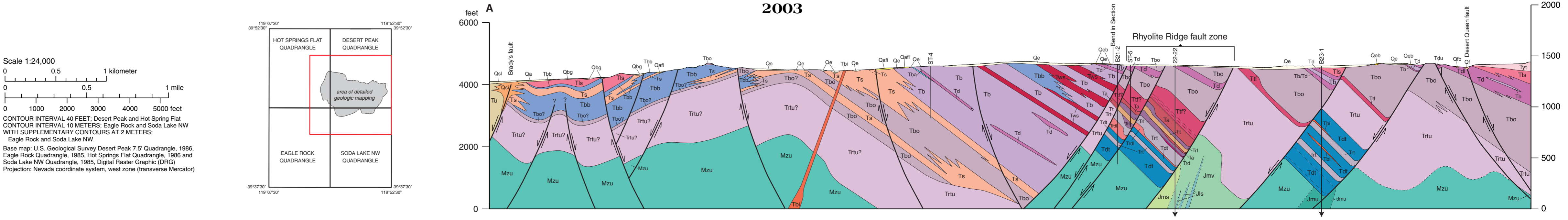


Field work done in 2003.
 Geologic mapping was supported by the U.S. Department of Energy and the Great Basin Center for Geothermal Energy (Agreement No. DE-FG07-020214311).
DRAFT
 Preliminary geologic map.
 Has not undergone office or field review.
 May be revised before publication.
 First Edition, first printing, 2003.
 Printed by Nevada Bureau of Mines and Geology.
 Cartography by Robert Chaney
 Nevada Bureau of Mines and Geology
 University of Nevada, Mail Stop 178
 Reno, Nevada 89557-0088
 (775) 784-4691, ext. 2
 www.nbgm.unr.edu; nbgm@unr.edu

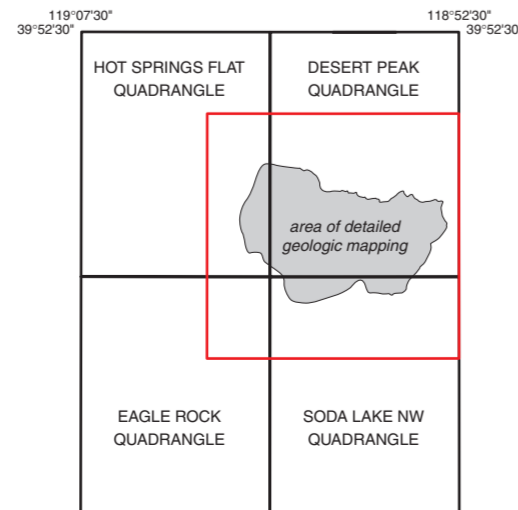


PRELIMINARY GEOLOGIC MAP OF THE DESERT PEAK - BRADY GEOTHERMAL FIELDS, CHURCHILL COUNTY, NEVADA

James E. Faulds and Larry J. Garside



Scale 1:24,000
 0 1000 2000 3000 4000 5000 feet
 0 0.5 1 kilometer
 0 0.5 1 mile



This map was printed on an electronic plate directly from digital files. Dimensional tolerances may vary between electronic plates and paper. Dimensions on the same plate and paper may change size due to atmospheric conditions; therefore, scale and position may not be exact on prints of this map.