

# Great Basin

## Fire Activity Report



2023



Great Basin Coordination Center  
401 Jimmy Doolittle Road, Suite 202  
Salt Lake City, UT 84116  
Phone: 801-531-5320  
Fax: 801-531-5321

# Great Basin 2023 Fire Activity Report

## Table of Contents

|   |           |
|---|-----------|
| <b>Summary Information .....</b>                                      | <b>3</b>  |
| <b>2023 Great Basin Fire Weather / Fuels Summary .....</b>            | <b>4</b>  |
| <b>Fire Summary for the Great Basin .....</b>                         | <b>5</b>  |
| Great Basin Comparison with Historical Averages .....                 | 6         |
| Preparedness Level Review .....                                       | 6         |
| Year End Totals by Cause .....  | 7         |
| Fire Cause by Agency .....  | 8         |
| Fires by Class Size .....   | 9         |
| Summary of Fire Activity by Dispatch Center .....                     | 10        |
| Large Fire Activity Review .....                                      | 11        |
| Large Fire Occurrence by Month .....                                  | 12        |
| Fire Activity Map .....   | 12        |
| Prescribed Fire Review .....  | 14        |
| Prescribed Acres Completed by State and Agency .....                  | 14        |
| <b>Incident Management Teams (IMT).....</b>                           | <b>15</b> |
| Great Basin MAC Group .....   | 15        |
| Area Command & National Incident Management Organization – NIMO ..... | 15        |
| Type 1 Incident Management Teams .....                                | 15        |
| Type 2 Incident Management Teams .....                                | 15        |
| Type 3 Incident Management Teams .....                                | 17        |
| <b>Great Basin Buying Teams.....</b>                                  | <b>19</b> |
| National Buying Team.....   | 19        |
| Geographical Buying Teams .....                                       | 19        |
| <b>Resource Order Summary .....</b>                                   | <b>20</b> |
| Aircraft Resource Order Summary .....                                 | 21        |
| Crew Resource Order Summary .....                                     | 22        |
| Type 1 Crew/IHC Mobilization Summary .....                            | 22        |
| Equipment Order Summary.....  | 23        |
| Overhead Resource Order Summary.....                                  | 26        |

## Summary Information

The Great Basin Coordination Center (GBCC) is the focal point for coordinating the mobilization of resources for wildland fire, and other incidents throughout the Great Basin Geographic Area. The Great Basin Geographic Area encompasses Utah, Nevada, Idaho (South of the Salmon River), the Western Wyoming Mountains, and the Arizona Strip. GBCC is located in Salt Lake City, UT and provides Intelligence, and Predictive Services related products, for use by the wildland fire community for incident management decision-making.

### **GBCC Annual Fire Report General Information**

GBCC is responsible for compiling fire reports for all large wildland fires on lands administered by the following five federal agencies: BLM, BIA, USFS, FWS, NPS, and state agencies. A large fire is defined as greater than 100 acres in forest fuel types, and greater than 300 acres in shrub and grass fuel types. Annual figures of total fire ignitions (regardless of size), and acres burned for individual units are also included.

Statistics used in this report were gathered from the National Situation Report and Incident Status Summary (ICS-209), and the Interagency Resource Ordering Capability (IROC) programs. The statistics presented here, are intended to provide a geographic area perspective of annual fire activity, and may not reflect official figures for a specific agency.

This document, in addition to previous years, is available electronically at the GBCC web page: <https://gacc.nifc.gov/gbcc/index.php> under the Intelligence link.

**Disclaimer:** The figures in this report provide general reporting information and overall accuracy cannot be guaranteed. Any determinations, policy, or subsequent reports using this information should be done under consultation with appropriate experts. For agency-specific details or official agency figures, contact the respective agency.

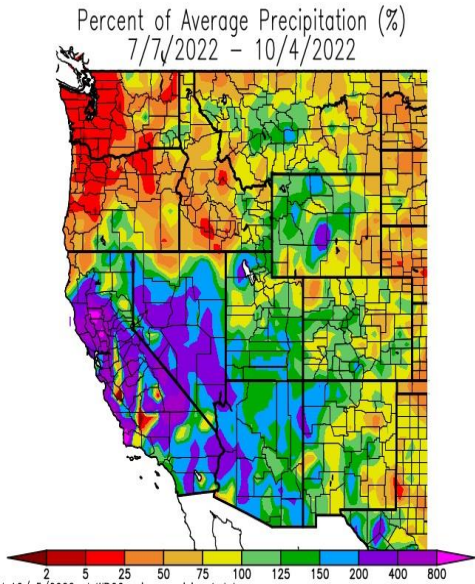


*Hayden, ID-SCF, July 24, 2023*

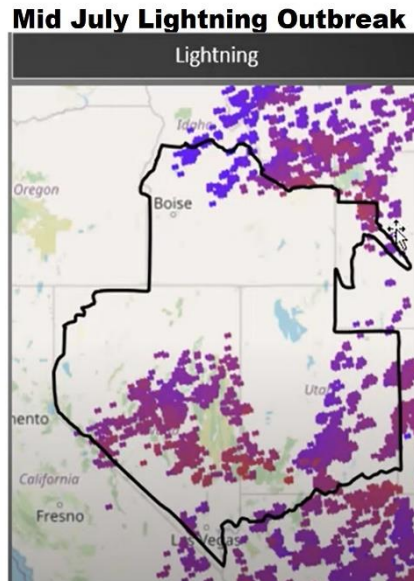
## 2023 Great Basin Fire Weather / Fuels Summary

### Weather 2023: Wet Winter/Record Snowpack/Wet Summer

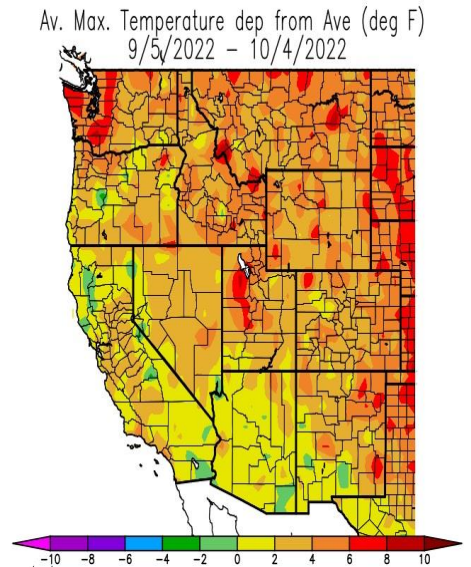
#### Strong & Long Monsoon



#### Mid July Dry Lightning Event



#### Warm & Dry Sep-Early Oct.



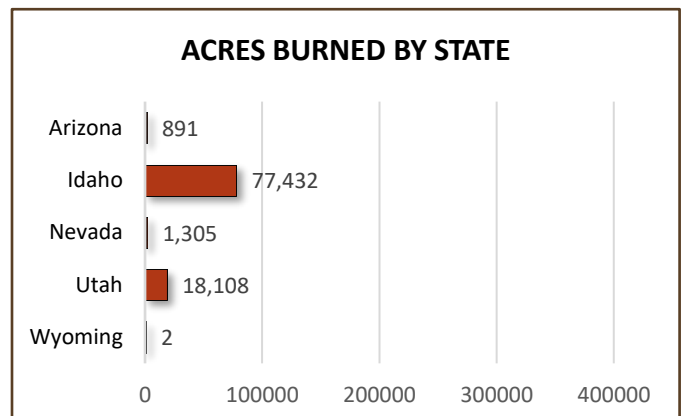
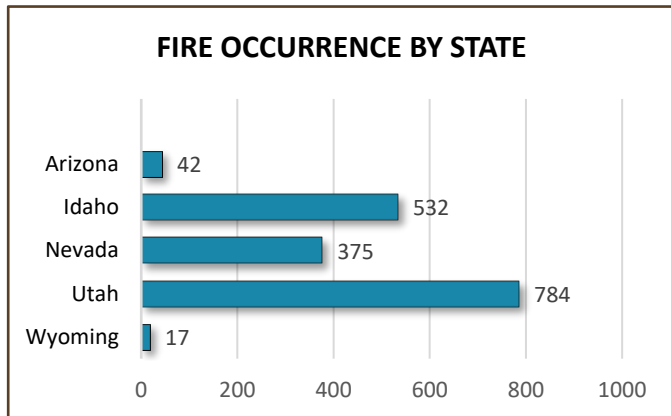
#### Notable Weather Events

- The 2023 Fire Season was preceded by an extremely wet winter, with record snowpack across much of the higher terrain of the Great Basin.
- A developing El Nino brought cool conditions to the region late spring into early summer.
- Although wet conditions helped produce above average fine fuel growth in many areas, it was tempered by significant delays in the curing of grass. Sagebrush moisture was above average in most areas and remained that way through the summer.
- Fire season activity was delayed significantly, with typical June fire activity not starting until mid-July.
- From mid-July to early August there was a brief period of prolonged hot and dry weather that increased fire activity in most areas.
- By early August, monsoonal rains began across southern areas, becoming heavier and more widespread by mid-August. When the remnants of Hurricane Hilary moved up from southern California into Nevada, Utah, and eventually Idaho, widespread flooding was produced.
- From late August into mid-September, several cold fronts from the Pacific Northwest pushed across northern areas of the Great Basin with several days of long duration wetting rains. By late September, the longer nights, and shorter days, combined with the moist surface conditions, kept fire activity low.

# Fire Summary for the Great Basin

The Great Basin had a well below average year for fire occurrence and total acres burned during 2023. There were 1,750 fires reported, burning a combined total of 97,739 acres.

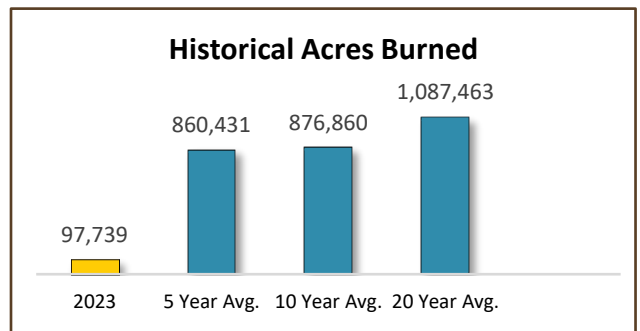
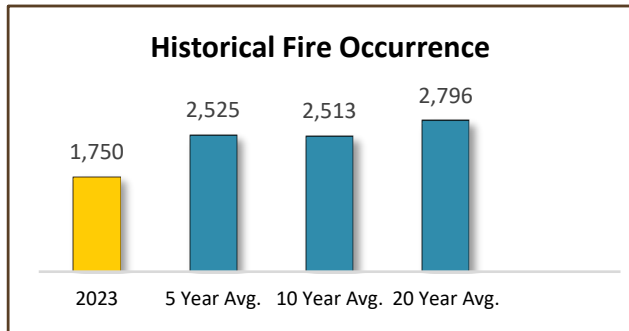
| FIRES & ACRES BY STATE & AGENCY |         |       |       |        |        |       |       |        |         |       |              |        |  |
|---------------------------------|---------|-------|-------|--------|--------|-------|-------|--------|---------|-------|--------------|--------|--|
|                                 | Arizona |       | Idaho |        | Nevada |       | Utah  |        | Wyoming |       | Agency Total |        |  |
|                                 | Fires   | Acres | Fires | Acres  | Fires  | Acres | Fires | Acres  | Fires   | Acres | Fires        | Acres  |  |
| <b>BIA</b>                      | 0       | 0     | 3     | 18     | 0      | 0     | 25    | 474    | 0       | 0     | 28           | 492    |  |
| <b>BLM</b>                      | 37      | 738   | 123   | 26,348 | 201    | 362   | 236   | 5,487  | 0       | 0     | 597          | 32,935 |  |
| <b>BOR</b>                      | 0       | 0     | 1     | 13     | 5      | 469   | 0     | 0      | 0       | 0     | 6            | 482    |  |
| <b>CNTY</b>                     | 0       | 0     | 37    | 593    | 83     | 174   | 0     | 0      | 3       | 0     | 123          | 766    |  |
| <b>DOD</b>                      | 0       | 0     | 2     | 5      | 1      | 0     | 1     | 0      | 0       | 0     | 4            | 5      |  |
| <b>FWS</b>                      | 0       | 0     | 0     | 0      | 5      | 0     | 0     | 0      | 1       | 0     | 6            | 0      |  |
| <b>NPS</b>                      | 0       | 0     | 0     | 0      | 27     | 3     | 19    | 180    | 2       | 0     | 48           | 183    |  |
| <b>OTHER</b>                    | 0       | 0     | 0     | 0      | 2      | 0     | 0     | 0      | 0       | 0     | 1            | 0      |  |
| <b>ST</b>                       | 5       | 153   | 236   | 2,666  | 2      | 0     | 366   | 2,201  | 0       | 0     | 609          | 5,020  |  |
| <b>USFS</b>                     | 0       | 0     | 130   | 47,790 | 50     | 298   | 137   | 9,766  | 11      | 2     | 328          | 57,856 |  |
| <b>State Totals</b>             | 42      | 891   | 352   | 77,432 | 375    | 1,305 | 784   | 18,108 | 17      | 2     | 1,750        | 97,739 |  |



Bettridge, UT-WDD, July 27, 2023

## Great Basin Comparison with Historical Averages

The Great Basin was below average for ignitions with 69% of the 5-year average and 63% of the 20-year average. The Great Basin was below the average of acres burned, burning 11% of the 5-year and 9% of the 20-year averages.

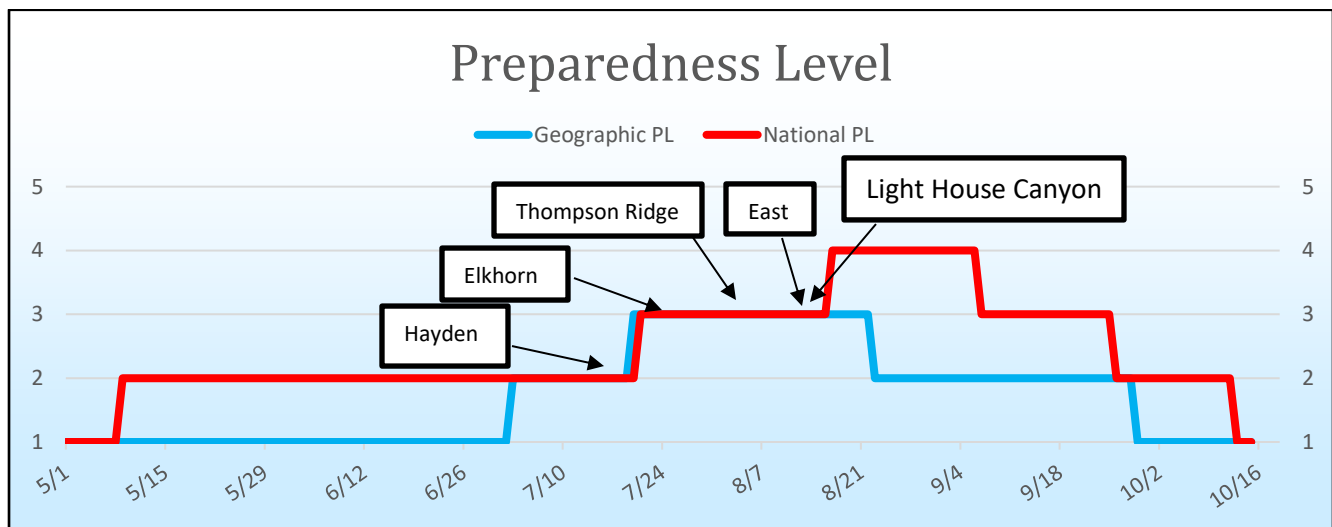


## Preparedness Level Review

Great Basin's Preparedness Level was elevated from 1 to 2 on July 3rd, approximately 2 weeks later than the 2022 season; this timeframe is average compared to the historical increase from PL 1 to PL 2.

On July 20th, the Great Basin's Preparedness Level increased to PL 3, approximately 1 week later than 2022. The increase was in conjunction with a spike in initial attack and resource commitment. The geographic area remained at PL 3 for 34 days (until August 23rd) when preparedness level returned to PL 2. On September 29th preparedness level returned to PL 1.

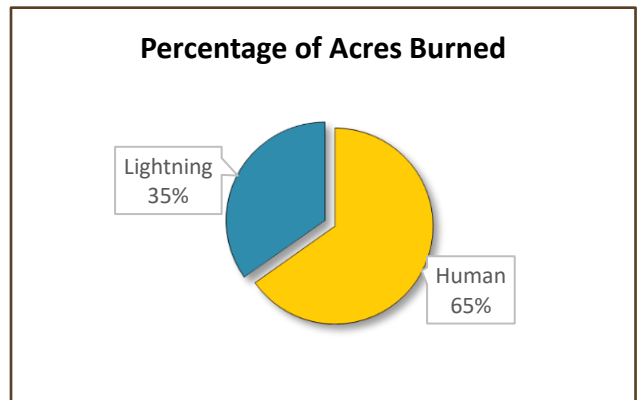
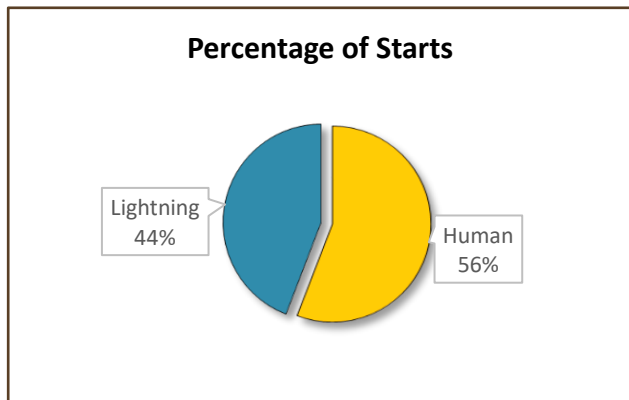
National Preparedness level markers are included on the display below to illustrate how the national situation was compared to the conditions experienced within the Great Basin.



## Year End Totals by Cause

Fire statistics for this report were pulled from the iNAP SIT Report. The statistics have not been reconciled with INFORM, or other final fire reporting systems. Great Basin reported 1,750 fires for 97,739 acres, with 977 of those starts being human caused while 773 were natural ignitions.

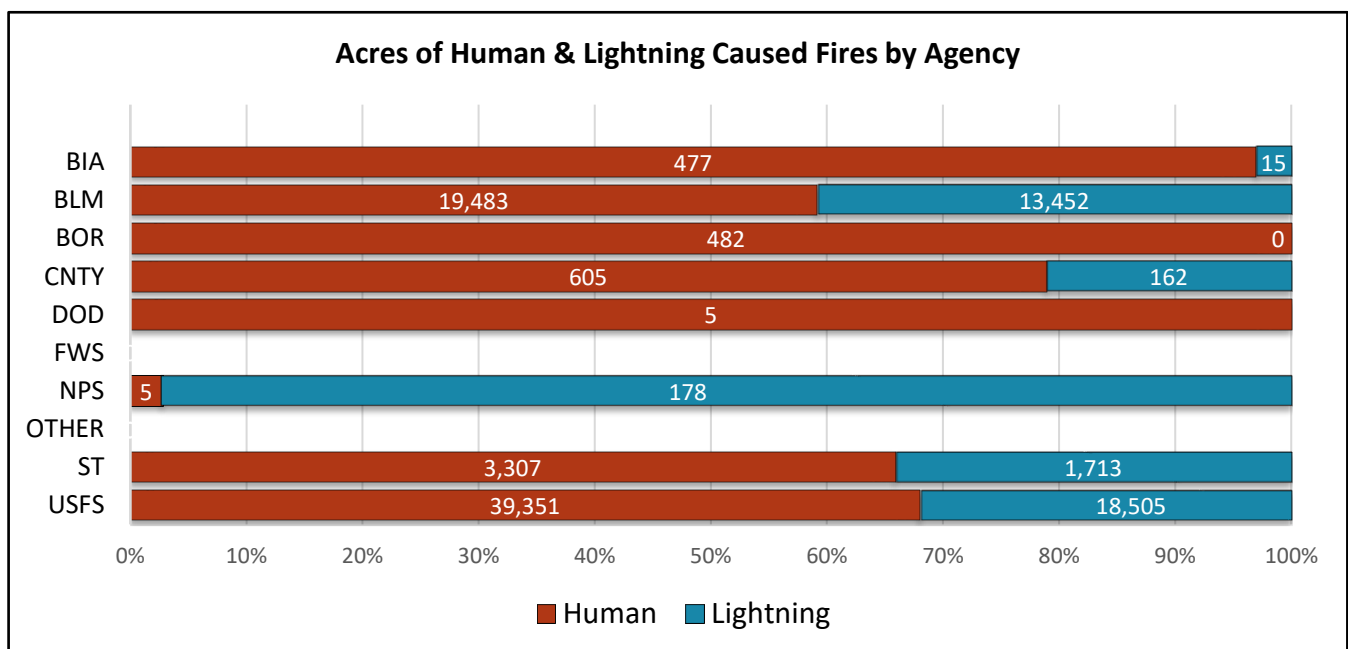
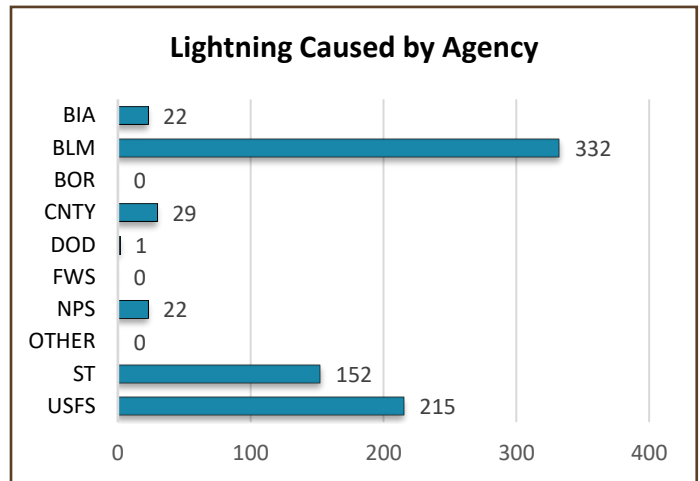
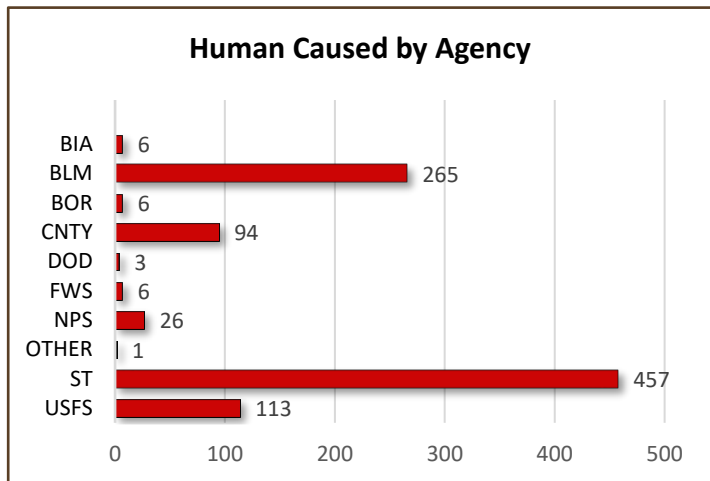
| Year | Human Caused |         | Lightning Caused |         | Totals |         |
|------|--------------|---------|------------------|---------|--------|---------|
|      | Fires        | Acres   | Fires            | Acres   | Fires  | Acres   |
| 2023 | 977          | 63,715  | 773              | 34,024  | 1,750  | 97,739  |
| 2022 | 1,177        | 266,884 | 949              | 164,620 | 2,126  | 431,504 |
| 2021 | 1,354        | 72,527  | 1,097            | 300,699 | 2,451  | 373,226 |
| 2020 | 2,159        | 432,493 | 807              | 517,624 | 2,966  | 950,117 |
| 2019 | 1,387        | 126,585 | 921              | 332,801 | 2,308  | 459,386 |



Light House Canyon Fire, UT-GRD, August 2023

## Fire Cause by Agency

| Agency        | Human      |               | Lightning  |               | Total        |               |
|---------------|------------|---------------|------------|---------------|--------------|---------------|
|               | Fires      | Acres         | Fires      | Acres         | Fires        | Acres         |
| BIA           | 6          | 477           | 22         | 15            | 28           | 492           |
| BLM           | 265        | 19,483        | 332        | 13,452        | 597          | 32,935        |
| BOR           | 6          | 482           | 0          | 0             | 6            | 482           |
| CNTY          | 94         | 605           | 29         | 162           | 123          | 766           |
| DOD           | 3          | 5             | 1          | 0             | 4            | 5             |
| FWS           | 6          | 0             | 0          | 0             | 6            | 0             |
| NPS           | 26         | 5             | 22         | 178           | 48           | 183           |
| OTHER         | 1          | 0             | 0          | 0             | 1            | 0             |
| ST            | 457        | 3,307         | 152        | 1,713         | 609          | 5,020         |
| USFS          | 113        | 39,351        | 215        | 18,505        | 328          | 57,856        |
| <b>Totals</b> | <b>977</b> | <b>63,715</b> | <b>773</b> | <b>34,024</b> | <b>1,750</b> | <b>97,739</b> |

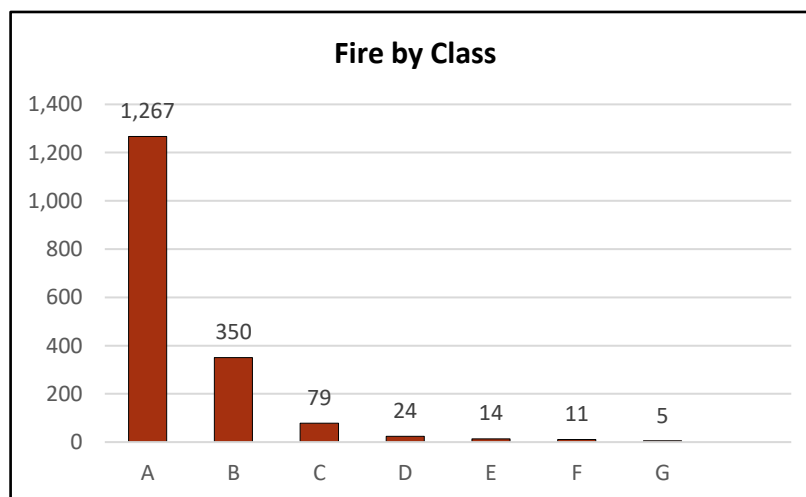


## Fires by Class Size

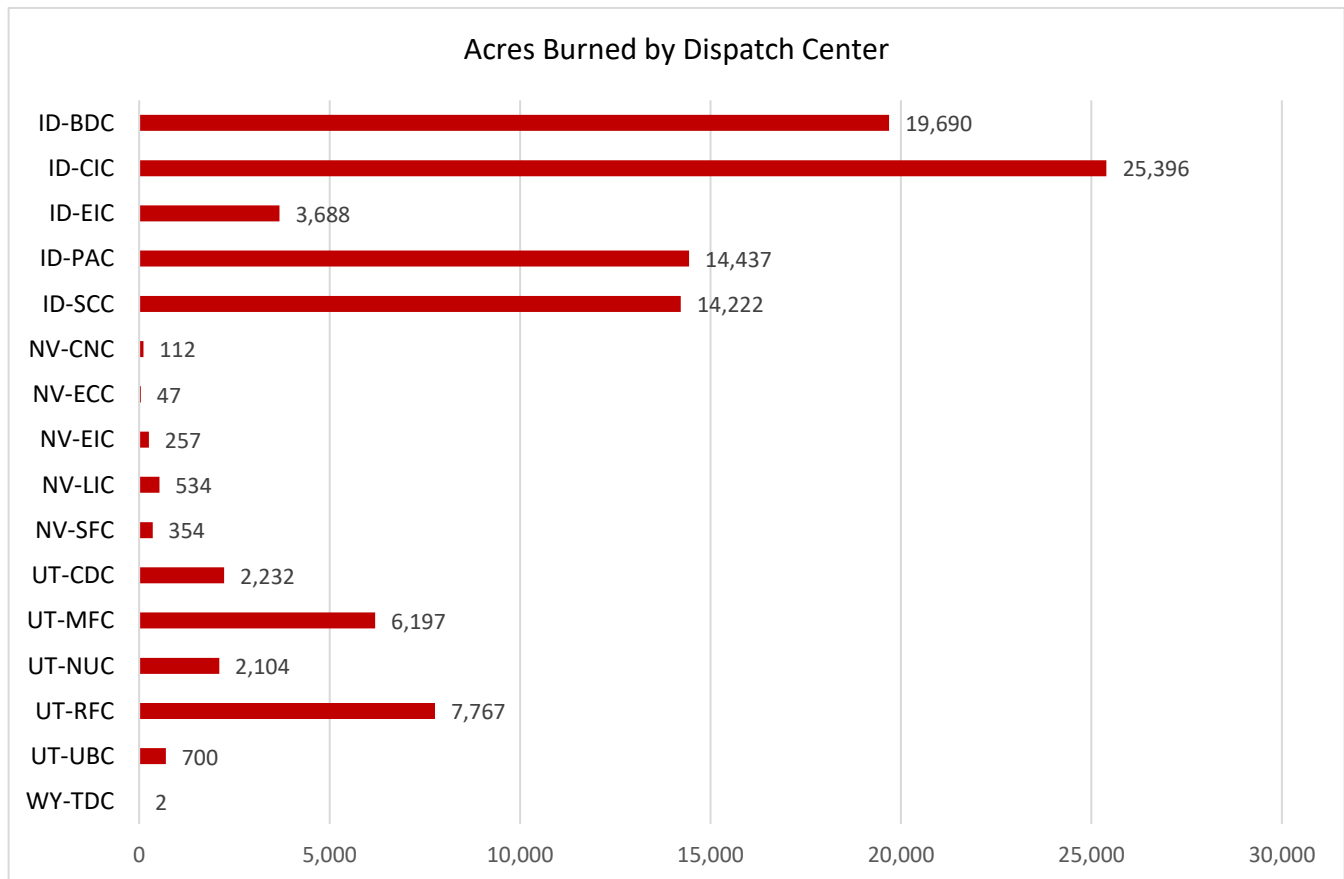
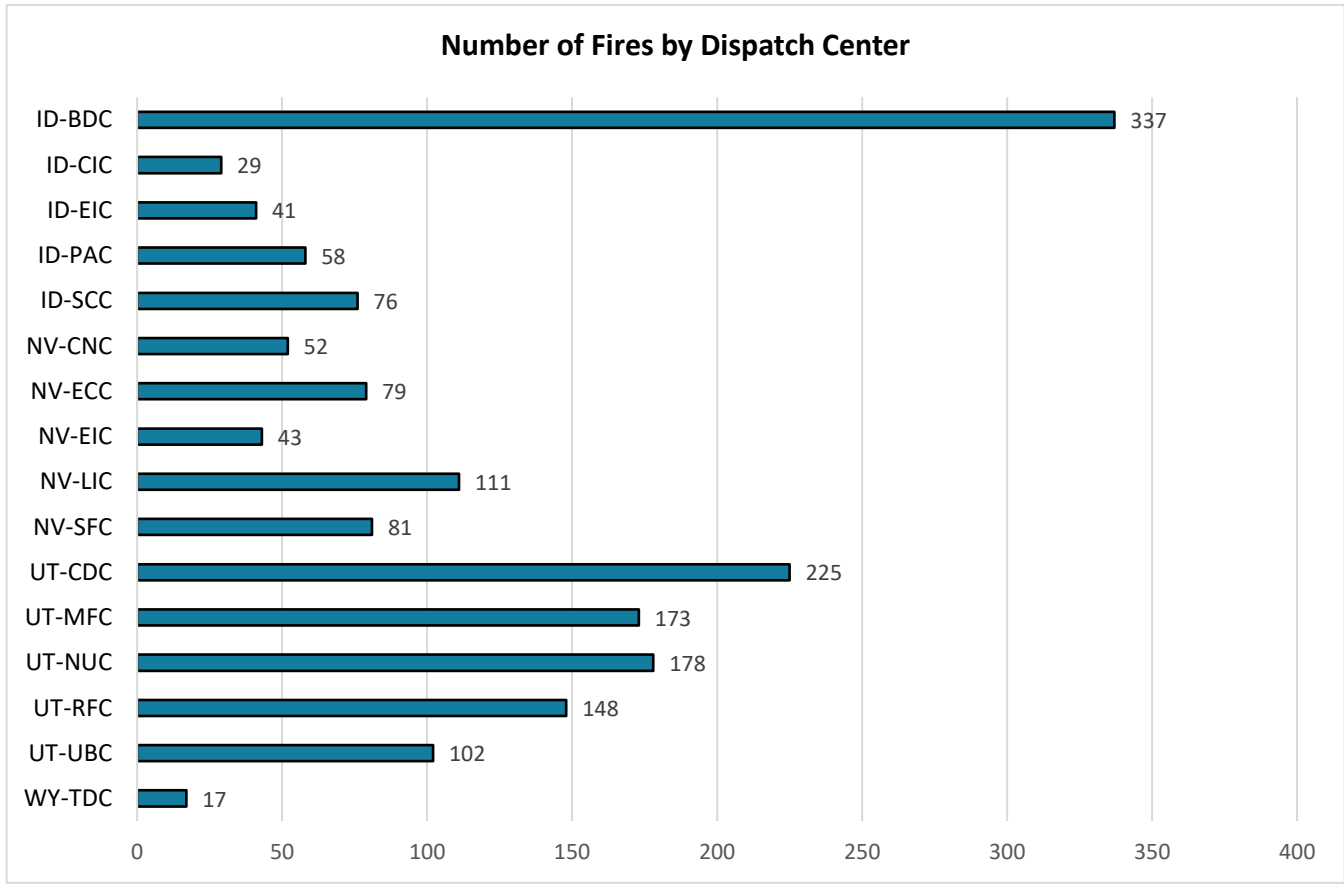
Fire statistics for this table and graph were gathered from each dispatch center and year-to-date stats. It should be noted that this data has not been reconciled with the fire reporting system of record.

| FIRES BY CLASS SIZE |             |            |           |           |           |           |          |              |
|---------------------|-------------|------------|-----------|-----------|-----------|-----------|----------|--------------|
| AGENCY              | A           | B          | C         | D         | E         | F         | G        | AGENCY TOTAL |
| BIA                 | 27          | 4          | 1         | 0         | 1         | 0         | 0        | 33           |
| BLM                 | 410         | 109        | 37        | 14        | 7         | 7         | 2        | 586          |
| BOR                 | 4           | 0          | 1         | 0         | 1         | 0         | 0        | 6            |
| CNTY                | 142         | 36         | 6         | 0         | 1         | 0         | 0        | 185          |
| DOD                 | 2           | 2          | 0         | 0         | 0         | 0         | 0        | 4            |
| FWS                 | 6           | 0          | 0         | 0         | 0         | 0         | 0        | 6            |
| NPS                 | 39          | 8          | 0         | 1         | 0         | 0         | 0        | 48           |
| ST                  | 270         | 86         | 17        | 4         | 2         | 0         | 0        | 379          |
| USFS                | 282         | 29         | 5         | 2         | 2         | 4         | 3        | 327          |
| OTHER               | 85          | 76         | 12        | 3         | 0         | 0         | 0        | 176          |
| <b>CLASS TOTAL</b>  | <b>1267</b> | <b>350</b> | <b>79</b> | <b>24</b> | <b>14</b> | <b>11</b> | <b>5</b> | <b>1750</b>  |

*Class A - one-fourth acre or less; Class B - more than one-fourth acre, but less than 10 acres; Class C - 10 acres or more, but less than 100 acres; Class D - 100 acres or more, but less than 300 acres; Class E - 300 acres or more, but less than 1,000 acres; Class F - 1,000 acres or more, but less than 5,000 acres; Class G - 5,000 acres or more.*



## Summary of Fire Activity by Dispatch Center



## Large Fire Review

Per the National Mobilization Guide, a large fire is a wildland fire managed for complete perimeter control (Full Suppression), that is 100 acres or larger in timber fuel types, and 300 acres or larger in grass or brush fuel types. There are other incidents that require ICS-209s, but the chart below includes only fires that meet the 100+/300+ criteria and sorted by state and start date of the incident.

### Idaho Large Fire Incidents

| Unit ID | Name           | Start Date | Cause (H/L/U) | Fire Size |
|---------|----------------|------------|---------------|-----------|
| ID-TFD  | Grindstone     | 05/21/23   | U             | 3146      |
| ID-BOD  | Orchard        | 05/30/23   | H             | 380.8     |
| ID-IDNG | OTR 1          | 06/07/23   | H             | 500       |
| ID-BOD  | Black          | 06/21/23   | H             | 562.2     |
| ID-ELX  | King Hill      | 06/21/23   | H             | 323       |
| ID-BOD  | Southtom       | 07/10/23   | H             | 1129.6    |
| ID-BOD  | Westbonn       | 07/13/23   | H             | 700       |
| ID-SWS  | Goldrun        | 07/18/23   | H             | 800       |
| ID-SCF  | Hayden         | 07/19/23   | U             | 24706     |
| ID-PAF  | Elk Horn       | 07/24/23   | U             | 26048     |
| ID-BOD  | MM66 I84       | 07/28/23   | H             | 994       |
| ID-CTF  | Midnight       | 08/10/23   | L             | 2,980     |
| ID-SCF  | Chilcoot       | 08/11/23   | U             | 685       |
| ID-BOF  | East           | 08/16/23   | L             | 3,313     |
| ID-BOD  | Ant            | 08/19/23   | L             | 6,570     |
| ID-BOD  | Riley          | 08/19/23   | L             | 1,400     |
| ID-STF  | Black Mountain | 08/20/23   | L             | 1312      |
| ID-CTF  | Big Creek      | 08/26/23   | L             | 457       |
| ID-TFD  | Telegraph      | 08/29/23   | H             | 1381      |
| ID-TFD  | Wedge          | 09/09/23   | H             | 7375      |

### Arizona Large Fire Incidents

| Unit ID | Name   | Start Date | Cause (H/L/U) | Fire Size |
|---------|--------|------------|---------------|-----------|
| AZ-ASD  | Hidden | 8/15/23    | L             | 417       |

H = Human

L = Lightning / Natural

U = Undetermined

### Nevada Large Fire Incidents

| Unit ID | Name     | Start Date | Cause (H/L/U) | Fire Size |
|---------|----------|------------|---------------|-----------|
| NV-HTF  | Lucky    | 7/5/23     | U             | 157       |
| NV-LCL  | Huntsman | 9/22/23    | H             | 469       |

### Utah Large Fire Incidents

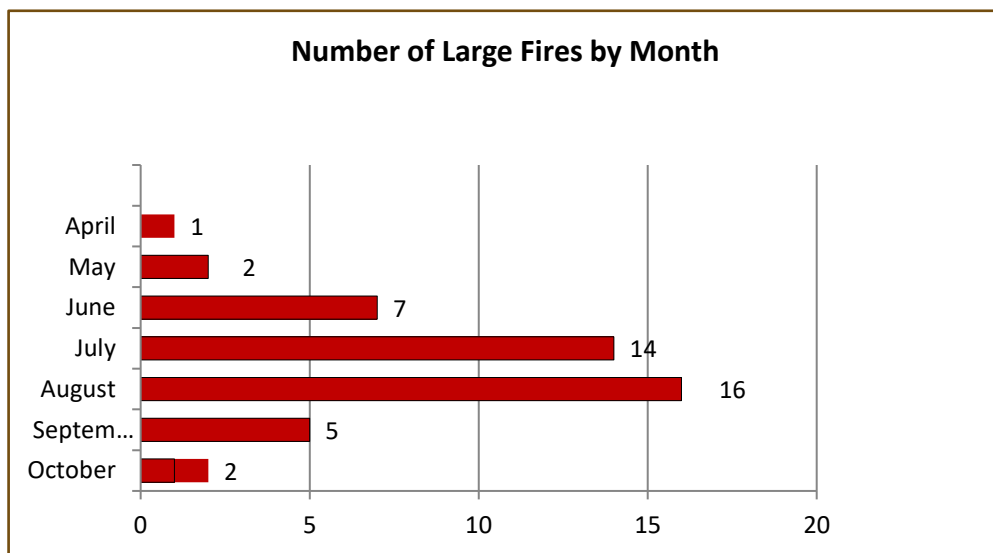
| Unit ID | Name               | Start Date | Cause (H/L/U) | Fire Size |
|---------|--------------------|------------|---------------|-----------|
| UT-BIA  | Red Bridge         | 4/23/23    | H             | 465       |
| UT-SWS  | Dixie Springs      | 6/19/23    | H             | 614       |
| UT-CYD  | I70 MM217          | 7/10/23    | H             | 1,802     |
| UT-WDD  | Rocky              | 7/21/23    | U             | 1,301     |
| UT-WDD  | Bettridge          | 7/27/23    | L             | 576       |
| UT-FIF  | Thompson Ridge     | 8/4/23     | L             | 7,253     |
| UT-GRD  | Light House Canyon | 8/16/23    | L             | 2,037     |
| UT-FIF  | Steep Creek        | 9/14/23    | L             | 343       |
| UT-MLF  | Box                | 9/19/23    | L             | 2,038     |

## Large Fire Occurrence by Month

The first large fire of the year was the Red Bridge incident on April 25th, in Uintah County, UT. The Red Bridge was a 465-acre human caused fire, located 5 miles South of Ft. Duchesne, UT.

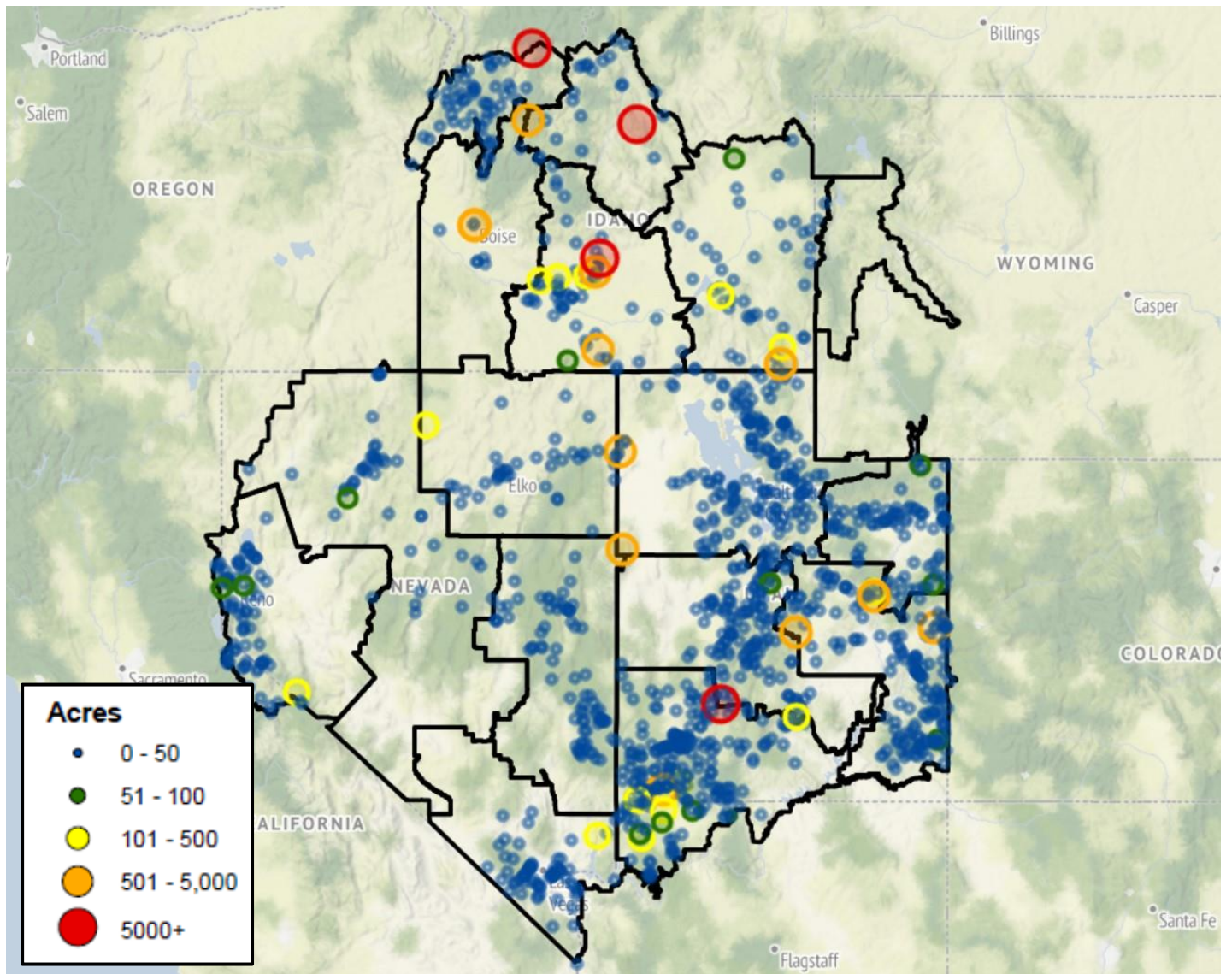
The largest fire of the year was the Elkhorn incident which started on July 24<sup>th</sup>, on the Payette National Forest, located 25 miles North-East of Warren, ID. This incident crossed Geographic boundaries to include Northern Rockies Geographic Area burning a total of 26,048 acres. The fire was contained on October 5<sup>th</sup>.

The graph below indicates large fire activity within the Great Basin by month. The numbers align with a general pattern for large fire occurrence within the Great Basin reflecting the uptick of activity by month.



*Elkhorn fire, ID-PAF, August 5, 2023*

## Fire Activity Map for 2023



## Prescribed Fire Review

The following statistics display prescribed fires and acres burned by units as reported on the Daily Situation Report within the iNAP Program. Only agencies who reported prescribed fires and acres in the iNAP Situation Report Program are represented in the chart below.

### Prescribed Acres Completed by State and Agency

| Agency              | Arizona Strip |              | California |          | Idaho     |               | Nevada    |              | Utah       |               | Wyoming (GB) |            | Agency Totals |               |
|---------------------|---------------|--------------|------------|----------|-----------|---------------|-----------|--------------|------------|---------------|--------------|------------|---------------|---------------|
|                     | Fires         | Acres        | Fires      | Acres    | Fires     | Acres         | Fires     | Acres        | Fires      | Acres         | Fires        | Acres      | Fires         | Acres         |
| BIA                 | 0             | 0            | 0          | 0        | 1         | 217           | 0         | 0            | 1          | 7             | 0            | 0          | 2             | 224           |
| BLM                 | 5             | 1,946        | 1          | 2        | 20        | 6,814         | 7         | 399          | 14         | 417           | 0            | 0          | 47            | 9,578         |
| BOR                 | 0             | 0            | 0          | 0        | 0         | 0             | 0         | 0            | 0          | 0             | 0            | 0          | 0             | 0             |
| CNTY                | 0             | 0            | 0          | 0        | 0         | 0             | 13        | 33           | 0          | 0             | 0            | 0          | 13            | 33            |
| DOD                 | 0             | 0            | 0          | 0        | 0         | 0             | 0         | 0            | 0          | 0             | 0            | 0          | 0             | 0             |
| FWS                 | 0             | 0            | 0          | 0        | 2         | 15            | 2         | 6,438        | 2          | 3,660         | 0            | 0          | 6             | 10,113        |
| NPS                 | 0             | 0            | 0          | 0        | 0         | 0             | 4         | 242          | 7          | 99            | 5            | 35         | 16            | 376           |
| OTHER               | 0             | 0            | 0          | 0        | 0         | 0             | 0         | 0            | 0          | 0             | 0            | 0          | 0             | 0             |
| ST                  | 0             | 0            | 0          | 0        | 12        | 1,640         | 14        | 76           | 48         | 1,403         | 0            | 0          | 74            | 3,119         |
| USFS                | 0             | 0            | 0          | 0        | 56        | 35,563        | 26        | 596          | 51         | 26,922        | 4            | 512        | 137           | 63,593        |
| <b>State Totals</b> | <b>5</b>      | <b>1,946</b> | <b>1</b>   | <b>2</b> | <b>91</b> | <b>44,249</b> | <b>66</b> | <b>7,784</b> | <b>123</b> | <b>32,508</b> | <b>9</b>     | <b>547</b> | <b>295</b>    | <b>87,036</b> |



Thompson Ridge Fire, UT-FIF, August 11, 2023

# Incident Management Teams (IMT)

## Great Basin MAC Group

The Great Basin Multi-Agency Coordinating (MAC) Group wasn't activated during the 2023 fire season.

## Area Command & National Incident Management Organization – NIMO

Great Basin did not host an Area Command Team or National Incident Management Organization (NIMO) during 2023.

## Type 1 Complex Incident Management Teams

- Great Basin Complex IMTs were mobilized to incidents in and out of the geographic area, 4 assignments for 56 days.

| Res Name: TEAM - CIMT - GB - TEAM 1 - KUO |               |                 |                      |           |           |               |
|---|---------------|-----------------|----------------------|-----------|-----------|---------------|
| Incident GACC                             | Incident Disp | Incident Number | Incident Name        | Mob ETD   | Demob ETA | Days Assigned |
| OR-NWC                                    | OR-NWC        | OR-NWC-000003   | 2023 RAC MOB SUPPORT | 8/20/2023 | 9/12/2023 | 5             |
| OR-NWC                                    | WA-CCC        | OR-MHF-001199   | CAMP CREEK           | 8/25/2023 | 9/12/2023 | 19            |
| <b>TOTAL</b>                              |               |                 |                      |           |           | <b>24</b>     |

| Res Name: TEAM - CIMT - GB - TEAM 2 - DEMASTERS |               |                 |               |           |           |               |
|---|---------------|-----------------|---------------|-----------|-----------|---------------|
| Incident GACC                                   | Incident Disp | Incident Number | Incident Name | Mob ETD   | Demob ETA | Days Assigned |
| UT-GBC  | ID-PAC        | ID-PAF-002673   | Elkhorn       | 8/2/2023  | 8/17/2023 | 16            |
| OR-NWC  | OR-EIC        | OR-WIF-230327   | Lookout       | 8/31/2023 | 9/15/2023 | 16            |
| <b>TOTAL</b>                                    |               |                 |               |           |           | <b>32</b>     |

## Type 2 Incident Management Teams

- Great Basin Type 2 IMTs were mobilized to incidents in and out of the geographic area, 8 assignments for 107 days.
- One Ad-Hoc Short Type 2 IMT was mobilized to Canada, 1 assignment for 19 days.

| Res Name: TEAM - IMT - T2 - GB - TEAM 3 - WATERS |                   |                 |                 |           |           |               |
|--|-------------------|-----------------|-----------------|-----------|-----------|---------------|
| Incident GACC                                    | Incident Dispatch | Incident Number | Incident Name   | Mob ETD   | Demob ETA | Days Assigned |
| AK-ACC   | AK-NFDC           | AK-FAS-311257   | Teklanika River | 7/29/2023 | 8/21/2023 | 24            |
| <b>TOTAL</b>                                     |                   |                 |                 |           |           | <b>24</b>     |

| Res Name: TEAM - IMT - T2 - GB - TEAM 4 - SHAW |                   |                 |               |          |           |               |
|--|-------------------|-----------------|---------------|----------|-----------|---------------|
| Incident GACC                                  | Incident Dispatch | Incident Number | Incident Name | Mob ETD  | Demob ETA | Days Assigned |
| UT-GBC   | ID-CIC            | ID-SCF-023084   | Hayden        | 8/2/2023 | 8/16/2023 | 15            |

|        |        |               |      |           |              |           |
|--------|--------|---------------|------|-----------|--------------|-----------|
| OR-NWC | OR-RVC | OR-RSF-000209 | Flat | 9/12/2023 | 9/28/2023    | 17        |
|        |        |               |      |           | <b>TOTAL</b> | <b>32</b> |

**Res Name: TEAM - IMT - T2 - GB - TEAM 5 - INGRAM**

| Incident GACC | Incident Dispatch | Incident Number | Incident Name  | Mob ETD   | Demob ETA    | Days Assigned |
|---------------|-------------------|-----------------|----------------|-----------|--------------|---------------|
| UT-GBC        | UT-RFC            | UT-FIF-230252   | Thompson Ridge | 8/10/2023 | 8/23/2023    | 14            |
|               |                   |                 |                |           | <b>TOTAL</b> | <b>14</b>     |

**Res Name: TEAM - IMT - T2 - GB - TEAM 6 - KIESLING**

| Incident GACC | Incident Dispatch | Incident Number | Incident Name     | Mob ETD   | Demob ETA    | Days Assigned |
|---------------|-------------------|-----------------|-------------------|-----------|--------------|---------------|
| UT-GBC        | ID-BDC            | ID-SWS-00052    | GOLDRUN           | 7/21/2023 | 7/21/2023    | 1             |
| UT-GBC        | UT-GBC            | UT-GBC-000004   | 2023 GBCC Support | 7/21/2023 | 7/26/2023    | 5             |
| UT-GBC        | ID-BDC            | ID-BOF-000740   | EAST              | 8/18/2023 | 9/1/2023     | 15            |
|               |                   |                 |                   |           | <b>TOTAL</b> | <b>21</b>     |

**Res Name: TEAM - IMT - T2 - GB - TEAM 7 - JOHNSTON**

| Incident GACC | Incident Dispatch | Incident Number | Incident Name | Mob ETD   | Demob ETA    | Days Assigned |
|---------------|-------------------|-----------------|---------------|-----------|--------------|---------------|
| UT-GBC        | ID-CIC            | ID-SCF-023084   | Hayden        | 7/20/2023 | 8/4/2023     | 16            |
|               |                   |                 |               |           | <b>TOTAL</b> | <b>16</b>     |

**Res Name: TEAM - SMT - T2 - GB - TEAM A - KIESLING**

| Incident GACC | Incident Dispatch | Incident Number | Incident Name                    | Mob ETD   | Demob ETA    | Days Assigned |
|---------------|-------------------|-----------------|----------------------------------|-----------|--------------|---------------|
| MB-CIFC       | MB-CIFC           | BC-BCN-000001   | 2023 Support to British Columbia | 9/13/2023 | 10/1/2023    | 19            |
|               |                   |                 |                                  |           | <b>TOTAL</b> | <b>19</b>     |

### Type 3 Incident Management Teams

- Great Basin standing Type 3 IMTs were mobilized to incidents in and out of the geographic area, 18 incidents for 174 days.
- Local Type 3 IMTs mobilized locally, 2 assignments for 8 days. Three Ad-Hoc Type 3 IMTs were mobilized to Canada, 3 assignments for 55 days.

**Res Name: TEAM - IMT - T3 – ID TEAM 1 - LAUCH**

| Incident GACC | Incident Dispatch | Incident Number | Incident Name        | Mob ETD   | Demob ETA    | Days Assigned |
|---------------|-------------------|-----------------|----------------------|-----------|--------------|---------------|
| UT-GBC        | ID-BDC            | ID-SWS-000552   | GOLDRUN              | 7/20/2023 | 7/27/2023    | 8             |
| OR-NWC        | OR-NWC            | OR-NWC-000003   | 2023 RAC MOB SUPPORT | 8/26/2023 | 9/6/2023     | 1             |
| OR-NWC        | OR-EIC            | OR-SUF-230394   | Rock Creek           | 8/27/2023 | 8/27/2023    | 1             |
| OR-NWC        | OR-EIC            | OR-SUF-230394   | 3 Buttes             | 8/27/2023 | 9/10/2023    | 14            |
|               |                   |                 |                      |           | <b>TOTAL</b> | <b>24</b>     |

**Res Name: TEAM - IMT - T3 – NV TEAM 1 – POWELL**

| Incident GACC | Incident Dispatch | Incident Number | Incident Name    | Mob ETD  | Demob ETA | Days Assigned |
|---------------|-------------------|-----------------|------------------|----------|-----------|---------------|
| CO-RMC        | CO-DRC            | CO-SJF-000001   | SJF Support 2023 | 7/1/2023 | 7/1/2023  | 1             |
| CO-RMC        | CO-DRC            | CO-AUX-000312   | Coal Mine        | 7/1/2023 | 7/7/2023  | 6             |

|              |         |               |                        |           |           |           |
|--------------|---------|---------------|------------------------|-----------|-----------|-----------|
| OR-NWC       | OR-RICC | OR-UPF-000276 | 2023 RICC GACC SUPPORT | 8/3/2023  | 8/13/2023 | 4         |
| OR-NWC       | OR-EIC  | OR-WIF-230329 | Salmon                 | 8/7/2023  | 8/7/2023  | 1         |
| OR-NWC       | OR-EIC  | OR-WIF-230327 | Lookout                | 8/7/2023  | 8/13/2023 | 5         |
| OR-NWC       | OR-EIC  | OR-WIF-230013 | 2023 GACC Preposition  | 8/13/2023 | 8/18/2023 | 5         |
| <b>TOTAL</b> |         |               |                        |           |           | <b>22</b> |

**Res Name: TEAM - IMT - T3 - NV TEAM 2 – KITCHEN**

| Incident GACC | Incident Dispatch | Incident Number | Incident Name      | Mob ETD   | Demob ETA | Days Assigned |
|---------------|-------------------|-----------------|--------------------|-----------|-----------|---------------|
| NM-SWC        | NM-TDC            | NM-CAF-000342   | American Mesa      | 8/7/2023  | 8/18/2023 | 12            |
| CA-ONCC       | CA-RICC           | CA-SHF-001004   | South Fork Complex | 9/12/2023 | 10/5/2023 | 24            |
| <b>TOTAL</b>  |                   |                 |                    |           |           | <b>36</b>     |

**Res Name: TEAM - IMT - T3 – NV TEAM 3 – BERTELSON**

| Incident GACC | Incident Dispatch | Incident Number | Incident Name | Mob ETD   | Demob ETA | Days Assigned |
|---------------|-------------------|-----------------|---------------|-----------|-----------|---------------|
| MT-NRC        | MT-DDC            | MT-BDF-006210   | Bowles Creek  | 8/18/2023 | 9/6/2023  | 20            |
| <b>TOTAL</b>  |                   |                 |               |           |           | <b>20</b>     |

**Res Name: TEAM - IMT - T3 – NV TEAM 4 - MILAM**

| Incident GACC | Incident Dispatch | Incident Number | Incident Name | Mob ETD | Demob ETA | Days Assigned |
|---------------|-------------------|-----------------|---------------|---------|-----------|---------------|
| <b>TOTAL</b>  |                   |                 |               |         |           | <b>0</b>      |

**Res Name: TEAM - IMT - T3 – NV TEAM 5 - STEPHENSON**

| Incident GACC | Incident Dispatch | Incident Number | Incident Name        | Mob ETD   | Demob ETA | Days Assigned |
|---------------|-------------------|-----------------|----------------------|-----------|-----------|---------------|
| AK-ACC        | AK-NFDC           | AK-FAS-311257   | Teklanika River      | 7/29/2023 | 8/21/2023 | 24            |
| OR-NWC        | OR-NWC            | OR-NWC-000003   | 2023 RAC MOB SUPPORT | 8/27/2023 | 9/12/2023 | 2             |
| CA-ONCC       | CA-RICC           | CA-SHF-000973   | DEEP                 | 8/28/2023 | 9/13/2023 | 16            |
| <b>TOTAL</b>  |                   |                 |                      |           |           | <b>42</b>     |

**Res Name: TEAM - IMT - T3 – UT TEAM 1 - DAVIS**

| Incident GACC | Incident Dispatch | Incident Number | Incident Name | Mob ETD | Demob ETA | Days Assigned |
|---------------|-------------------|-----------------|---------------|---------|-----------|---------------|
| <b>TOTAL</b>  |                   |                 |               |         |           | <b>0</b>      |

**Res Name: TEAM - IMT - T3 - WY TEAM 2 – ERICKSON**

| Incident GACC | Incident Dispatch | Incident Number | Incident Name | Mob ETD   | Demob ETA | Days Assigned |
|---------------|-------------------|-----------------|---------------|-----------|-----------|---------------|
| MT-NRC        | ID-GVC            | ID-NCF-000370   | MIDNIGHT      | 7/25/2023 | 8/10/2023 | 17            |
| <b>TOTAL</b>  |                   |                 |               |           |           | <b>17</b>     |

**Res Name: TEAM - IMT - T3 - WY TEAM 6 – STEFFENS**

| Incident GACC | Incident Dispatch | Incident Number | Incident Name      | Mob ETD  | Demob ETA | Days Assigned |
|---------------|-------------------|-----------------|--------------------|----------|-----------|---------------|
| UT-GBC        | UT-MFC            | UT-GRD-023296   | Light House Canyon | 9/9/2023 | 9/21/2023 | 13            |
| <b>TOTAL</b>  |                   |                 |                    |          |           | <b>13</b>     |

**Res Name: TEAM - IMT - GB - T3 - TEAM A – MILAM**

| Incident GACC | Incident Dispatch | Incident Number | Incident Name           | Mob ETD   | Demob ETA    | Days Assigned |
|---------------|-------------------|-----------------|-------------------------|-----------|--------------|---------------|
| MB-CIFC       | MB-CIFC           | AB-ABN-000002   | 2023 Support to Alberta | 6/23/2023 | 7/10/2023    | 18            |
|               |                   |                 |                         |           | <b>TOTAL</b> | <b>18</b>     |

**Res Name: TEAM - IMT - GB - T3 - TEAM B - JOHNSTON**

| Incident GACC | Incident Dispatch | Incident Number | Incident Name           | Mob ETD   | Demob ETA    | Days Assigned |
|---------------|-------------------|-----------------|-------------------------|-----------|--------------|---------------|
| MB-CIFC       | MB-CIFC           | AB-ABN-000002   | 2023 Support to Alberta | 6/24/2023 | 7/11/2023    | 18            |
|               |                   |                 |                         |           | <b>TOTAL</b> | <b>18</b>     |

**Res Name: TEAM - IMT - GB - T3 - TEAM C - INGRAM**

| Incident GACC | Incident Dispatch | Incident Number | Incident Name           | Mob ETD   | Demob ETA    | Days Assigned |
|---------------|-------------------|-----------------|-------------------------|-----------|--------------|---------------|
| MB-CIFC       | MB-CIFC           | AB-ABN-000002   | 2023 Support to Alberta | 7/10/2023 | 7/28/2023    | 19            |
|               |                   |                 |                         |           | <b>TOTAL</b> | <b>19</b>     |

**Res Disp Org Name: Northern Utah Interagency Fire Center**

**Res Name: TEAM - IMT - T3 – NORTHERN UTAH 1**

| Incident GACC | Incident Dispatch | Incident Number | Incident Name | Mob ETD   | Demob ETA    | Days Assigned |
|---------------|-------------------|-----------------|---------------|-----------|--------------|---------------|
| UT-GBC        | UT-NUC            | UT-WDD-200403   | Bettridge     | 7/29/2023 | 8/1/2023     | 4             |
|               |                   |                 |               |           | <b>TOTAL</b> | <b>4</b>      |

**Res Disp Org Name: Richfield Interagency Fire Center**

**Res Name: TEAM - IMT - T3 – CENTRAL UTAH**

| Incident GACC | Incident Dispatch | Incident Number | Incident Name  | Mob ETD  | Demob ETA    | Days Assigned |
|---------------|-------------------|-----------------|----------------|----------|--------------|---------------|
| UT-GBC        | UT-RFC            | UT-FIF-230252   | Thompson Ridge | 8/8/2023 | 8/11/2023    | 4             |
|               |                   |                 |                |          | <b>TOTAL</b> | <b>4</b>      |

## Great Basin Buying Teams

- Buying Teams were mobilized to incidents in and out of the geographic area, 7 assignments for 105 days.

## National Buying Team

**Resource Name: TEAM - BUYING - NATIONAL TEAM 1 - GB - WHARTON**

| Incident GACC | Incident Dispatch | Incident Number | Incident Name        | Mob ETD  | Demob ETA    | Days Assigned |
|---------------|-------------------|-----------------|----------------------|----------|--------------|---------------|
| UT-GBC        | ID-PAC            | ID-PAC-230000   | 2023 Payette Support | 8/2/2023 | 8/22/2023    | 21            |
| CA-ONCC       | CA-ONCC           | CA-R0-000019    | 2023 BUYT Support    | 9/3/2023 | 9/20/2023    | 18            |
|               |                   |                 |                      |          | <b>TOTAL</b> | <b>39</b>     |

## Geographical Buying Teams

**Resource Name: TEAM - BUYING - GEOGRAPHICAL TEAM 2 - GB - HAYCOCK**

| Incident GACC | Incident Dispatch | Incident Number | Incident Name | Mob ETD | Demob ETA | Days Assigned |
|---------------|-------------------|-----------------|---------------|---------|-----------|---------------|
|---------------|-------------------|-----------------|---------------|---------|-----------|---------------|

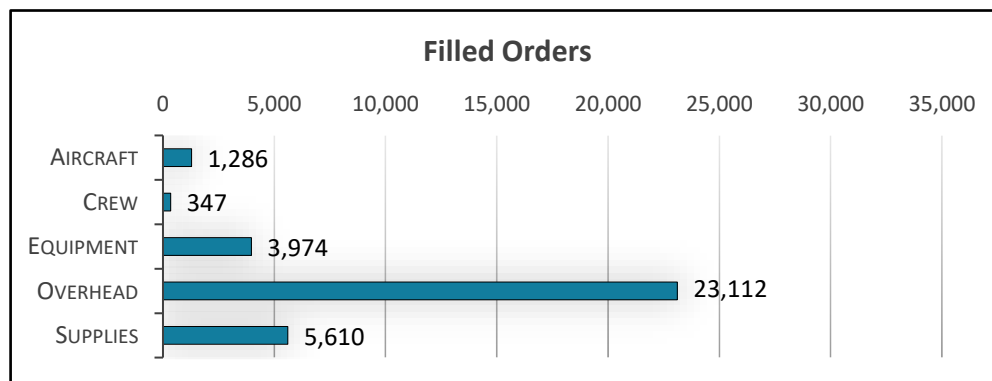
|        |        |               |                |           |              |           |
|--------|--------|---------------|----------------|-----------|--------------|-----------|
| UT-GBC | UT-CIC | ID-SCF-023084 | Hayden         | 8/4/2023  | 8/10/2023    | 6         |
| UT-GBC | UT-RFC | UT-FIF-230252 | Thompson Ridge | 8/10/2023 | 8/22/2023    | 13        |
|        |        |               |                |           | <b>TOTAL</b> | <b>39</b> |

| Resource Name: TEAM - BUYING - GEOGRAPHICAL TEAM 3 - GB - PITCHFORD |                   |                 |                      |           |              |               |
|---|-------------------|-----------------|----------------------|-----------|--------------|---------------|
| Incident GACC   | Incident Dispatch | Incident Number | Incident Name        | Mob ETD   | Demob ETA    | Days Assigned |
| UT-GBC  | ID-CIC            | ID-SCF-023084   | Hayden               | 7/21/2023 | 8/5/2023     | 16            |
| UT-GBC  | ID-BDC            | ID-BOF-000740   | 2022 Payette Support | 8/18/2023 | 9/2/2023     | 16            |
| GA-SAC  | LA-LIC            | LA-LAS-000252   | Tiger Island         | 9/9/2023  | 9/23/2023    | 15            |
|   |                   |                 |                      |           | <b>TOTAL</b> | <b>47</b>     |

## Resource Order Summary

During 2023, the dispatch community within the Great Basin managed 46,967 requests. Of those 46,967 requests, 34,329 were filled, which equates to 73% fill rate. The total requests represent a 33% decrease in requests compared to the 2022 season.

| Req Catalog Name | Place Direct | Place Down   | Place Up     | Retrieve   | Send Back  | UTF          | No Place      | Fill          | Count Distinct |
|------------------|--------------|--------------|--------------|------------|------------|--------------|---------------|---------------|----------------|
| Aircraft         | 449          | 543          | 614          | 116        | 38         | 144          | 1,602         | 1,286         | 2,157          |
| Crew             | 46           | 374          | 260          | 50         | 11         | 70           | 384           | 347           | 663            |
| Equipment        | 406          | 1,480        | 216          | 135        | 46         | 298          | 3,733         | 3,974         | 5,235          |
| Overhead         | 3,298        | 7,363        | 1,543        | 342        | 100        | 1,110        | 21,140        | 23,112        | 29,594         |
| Supply           | 125          | 14           | 201          | 20         | 100        | 32           | 9,276         | 5,610         | 9,318          |
| <b>Summary</b>   | <b>4,324</b> | <b>9,774</b> | <b>2,834</b> | <b>663</b> | <b>295</b> | <b>1,654</b> | <b>36,135</b> | <b>34,329</b> | <b>46,967</b>  |



## Aircraft Resource Order Summary

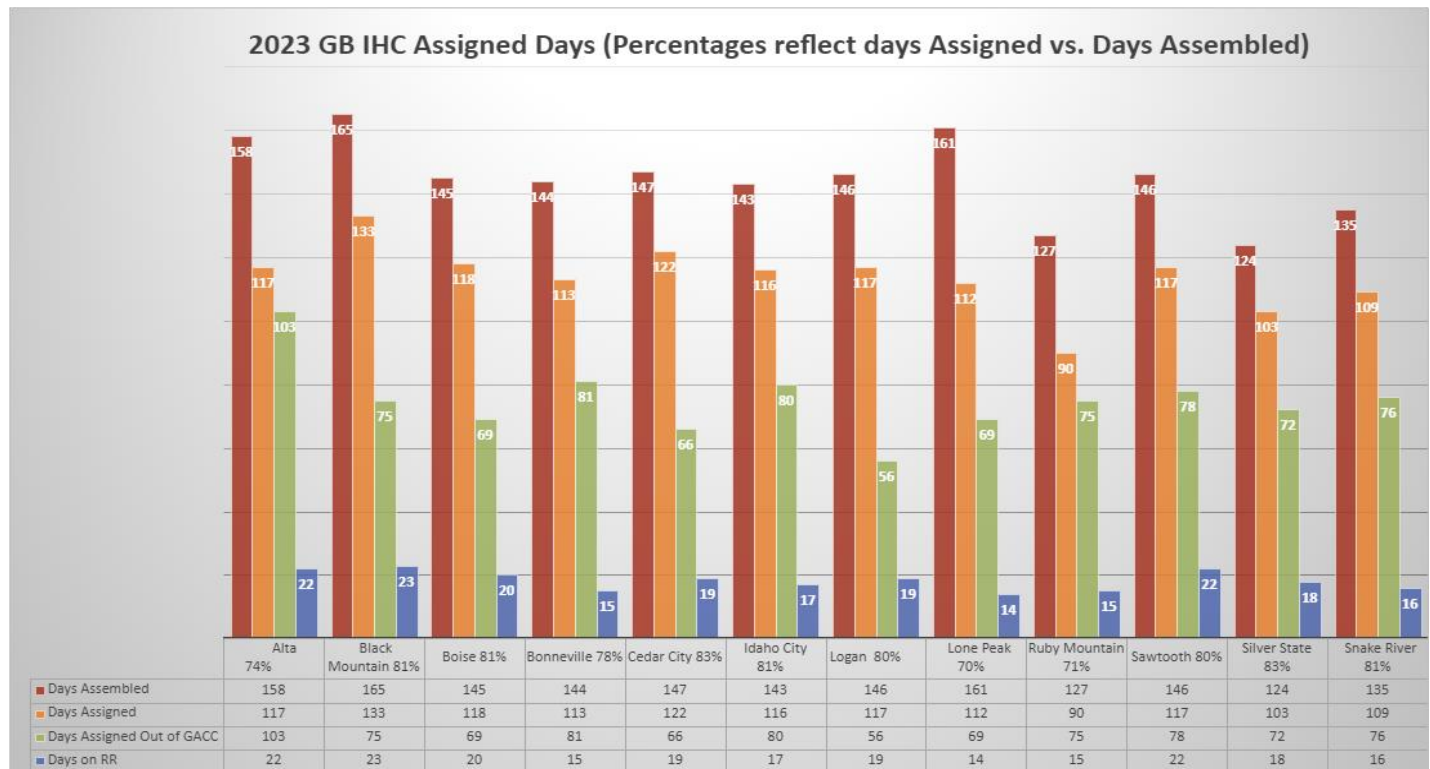
| Req Category Name | Req Catalog Item Name             | Place Direct | Place Down | Place Up | Retrieve | Send Back | UTF | No Place | Fill | Count |
|-------------------|-----------------------------------|--------------|------------|----------|----------|-----------|-----|----------|------|-------|
| Aircraft Groups   | Load, Rappeller, Initial Attack   | 0            | 0          | 0        | 0        | 0         | 0   | 2        | 2    | 4     |
|                   | Load, Smokejumper, Initial Attack | 17           | 20         | 12       | 5        | 3         | 0   | 62       | 60   | 179   |
| Airtanker         | Airtanker, Type 1                 | 5            | 38         | 16       | 3        | 0         | 3   | 22       | 24   | 111   |

| Req Category Name       | Req Catalog Item Name                      | Place Direct | Place Down | Place Up   | Retrieve   | Send Back | UTF        | No Place     | Fill         | Count        |
|-------------------------|--|--------------|------------|------------|------------|-----------|------------|--------------|--------------|--------------|
|                         | Airtanker, Type 1 or 2                     | 25           | 118        | 88         | 10         | 5         | 17         | 117          | 97           | 477          |
|                         | Airtanker, Type 3 (Multi-Engine)           | 4            | 8          | 16         | 0          | 0         | 8          | 23           | 8            | 67           |
|                         | Airtanker, Type 3 (Single Engine)          | 31           | 24         | 19         | 9          | 1         | 1          | 120          | 98           | 303          |
|                         | Airtanker, Type 3 (Single, Multi or Type4) | 0            | 0          | 0          | 0          | 0         | 0          | 0            | 0            | 0            |
|                         | Airtanker, Type 3 or 4                     | 160          | 40         | 30         | 12         | 1         | 10         | 222          | 188          | 663          |
|                         | Airtanker, Any Type                        | 0            | 1          | 1          | 0          | 0         | 0          | 2            | 2            | 6            |
|                         | Airtanker, VLAT                            | 2            | 0          | 5          | 0          | 0         | 0          | 4            | 0            | 11           |
| Fixed Wing              | Fixed Wing, Aerial Supervision Module      | 8            | 110        | 9          | 9          | 1         | 1          | 10           | 65           | 213          |
|                         | Fixed Wing, Air Tactical                   | 91           | 149        | 57         | 21         | 8         | 26         | 199          | 198          | 749          |
|                         | Fixed Wing, Cargo                          | 0            | 0          | 0          | 0          | 0         | 0          | 0            | 0            | 0            |
|                         | Fixed Wing, Infrared                       | 0            | 1          | 1          | 1          | 0         | 0          | 1            | 0            | 4            |
|                         | Fixed Wing, Leadplane                      | 7            | 76         | 25         | 9          | 3         | 6          | 33           | 44           | 203          |
|                         | Fixed Wing, Reconnaissance                 | 0            | 13         | 1          | 1          | 0         | 2          | 1            | 5            | 14           |
|                         | Fixed Wing, Smokejumper                    | 5            | 28         | 13         | 2          | 5         | 0          | 63           | 73           | 189          |
| Frequency               | Air to Air AM                              | 0            | 0          | 30         | 0          | 2         | 0          | 30           | 7            | 69           |
|                         | Air to Ground FM                           | 0            | 0          | 27         | 0          | 1         | 18         | 0            | 0            | 46           |
|                         | Deck                                       | 0            | 0          | 0          | 0          | 0         | 0          | 0            | 0            | 0            |
|                         | Tactical                                   | 0            | 1          | 7          | 1          | 0         | 0          | 8            | 0            | 17           |
|                         | Takeoff and Landing                        | 0            | 0          | 0          | 0          | 0         | 0          | 0            | 0            | 0            |
| Helicopter              | Helicopter, Type 1 Restricted              | 28           | 51         | 36         | 9          | 2         | 0          | 122          | 115          | 363          |
|                         | Helicopter, Type 1 Standard                | 0            | 1          | 2          | 2          | 1         | 0          | 1            | 0            | 7            |
|                         | Helicopter, Type 2 Restricted              | 1            | 0          | 1          | 0          | 0         | 0          | 3            | 2            | 7            |
|                         | Helicopter, Type 2 Standard                | 6            | 37         | 32         | 3          | 2         | 22         | 74           | 61           | 237          |
|                         | Helicopter, Type 3 Restricted              | 2            | 0          | 0          | 2          | 0         | 0          | 2            | 0            | 6            |
|                         | Helicopter, Type 3 Standard                | 70           | 133        | 82         | 22         | 8         | 29         | 299          | 304          | 947          |
| Service - Aviation      | Service – Infrared Flight                  | 0            | 0          | 102        | 1          | 0         | 103        | 105          | 0            | 311          |
|                         | Service – Logistical Flight                | 0            | 2          | 0          | 1          | 0         | 0          | 0            | 1            | 4            |
|                         | Service – Mobile Retardant Base            | 0            | 0          | 1          | 0          | 0         | 0          | 1            | 0            | 2            |
|                         | Service - Temporary Flight Restriction     | 0            | 0          | 10         | 0          | 1         | 0          | 43           | 21           | 75           |
|                         | Service - Temporary Tower                  | 0            | 0          | 0          | 0          | 0         | 0          | 0            | 0            | 0            |
| Unmanned Aircraft       | Unmanned Aircraft, Fixed Wing, Type 3      | 0            | 0          | 0          | 0          | 0         | 0          | 1            | 1            | 2            |
|                         | Unmanned Aircraft, Rotor                   | 5            | 5          | 13         | 6          | 1         | 4          | 14           | 6            | 54           |
|                         | Unmanned Aircraft, Rotor Wing, Type 4      | 0            | 0          | 0          | 0          | 0         | 0          | 1            | 1            | 2            |
| <b>Aircraft Summary</b> |  | <b>687</b>   | <b>851</b> | <b>636</b> | <b>129</b> | <b>45</b> | <b>250</b> | <b>1,585</b> | <b>1,383</b> | <b>5,342</b> |

## Crew Resource Order Summary

| Req Category Name   | Req Catalog Item Name         | Place Direct | Place Down | Place Up   | Retrieve  | Send Back | UTF        | No Place   | Fill       | Count       |
|---------------------|-------------------------------|--------------|------------|------------|-----------|-----------|------------|------------|------------|-------------|
| Fire                | Crew, Misc                    | 0            | 0          | 0          | 0         | 0         | 0          | 0          | 0          | 0           |
|                     | Crew, Type 1                  | 6            | 95         | 44         | 9         | 2         | 23         | 76         | 78         | 333         |
|                     | Crew, Type 1 or 2 Any         | 2            | 10         | 9          | 2         | 0         | 3          | 12         | 8          | 46          |
|                     | Crew, Type 1 or 2 IA          | 8            | 186        | 60         | 20        | 6         | 18         | 71         | 130        | 499         |
|                     | Crew, Type 2                  | 6            | 43         | 51         | 2         | 2         | 6          | 57         | 18         | 185         |
|                     | Crew, Type 2 Any              | 0            | 1          | 15         | 4         | 0         | 2          | 24         | 12         | 58          |
|                     | Crew, Type 2 IA               | 21           | 127        | 64         | 17        | 3         | 37         | 109        | 121        | 499         |
|                     | Crew, Type Any                | 1            | 12         | 10         | 0         | 0         | 14         | 12         | 9          | 58          |
| Fire, Strike Team   | Crew, Strike Team, Type 1     | 0            | 0          | 0          | 0         | 0         | 0          | 0          | 0          | 0           |
|                     | Crew, Strike Team, Type 2 Any | 0            | 0          | 0          | 0         | 0         | 0          | 0          | 0          | 0           |
| Non-Fire            | Crew, Camp                    | 7            | 69         | 16         | 4         | 0         | 16         | 22         | 32         | 166         |
|                     | Crew, Type Any                | 0            | 0          | 0          | 0         | 0         | 0          | 0          | 0          | 0           |
| <b>Crew Summary</b> |                               | <b>51</b>    | <b>543</b> | <b>269</b> | <b>58</b> | <b>13</b> | <b>119</b> | <b>383</b> | <b>408</b> | <b>1844</b> |

## Type 1 Crew/IHC Mobilization Summary



## Equipment Order Summary

| Req Category Name          | Req Catalog Item Name                            | Place Direct | Place Down | Place Up | Retrieve | Send Back | UJF | No Place | Fill | Count |
|----------------------------|--|--------------|------------|----------|----------|-----------|-----|----------|------|-------|
| Dozer                      | Dozer, Type 1                                    | 0            | 2          | 0        | 0        | 0         | 0   | 6        | 6    | 14    |
|                            | Dozer, Type 2                                    | 8            | 75         | 1        | 0        | 0         | 13  | 123      | 134  | 354   |
|                            | Dozer, Type 3                                    | 1            | 46         | 0        | 0        | 0         | 2   | 1        | 1    | 51    |
|                            | Dozer, Type 4                                    | 0            | 0          | 0        | 0        | 0         | 0   | 0        | 0    | 0     |
|                            | Dozer, Type Any                                  | 2            | 7          | 2        | 0        | 0         | 2   | 7        | 7    | 27    |
| Dozer, Strike Team         | Dozer, Strike Team, Type 2                       | 0            | 0          | 0        | 0        | 0         | 0   | 0        | 0    | 0     |
|                            | Dozer, Strike Team, Type Any                     | 0            | 0          | 0        | 0        | 0         | 0   | 0        | 0    | 0     |
| Engine                     | Aircraft Rescue and Firefighting Vehicle, Type 2 | 0            | 0          | 0        | 0        | 0         | 0   | 0        | 0    | 0     |
|                            | Aircraft Rescue and Firefighting Vehicle, Type 3 | 0            | 5          | 1        | 1        | 0         | 5   | 1        | 0    | 13    |
|                            | Engine, Type 1                                   | 0            | 0          | 0        | 0        | 0         | 0   | 17       | 17   | 34    |
|                            | Engine, Type 2                                   | 0            | 0          | 0        | 0        | 0         | 0   | 2        | 2    | 4     |
|                            | Engine, Type 3                                   | 33           | 254        | 25       | 13       | 3         | 19  | 417      | 479  | 1,243 |
|                            | Engine, Type 3, 4, 5, or 6                       | 94           | 821        | 58       | 40       | 12        | 174 | 403      | 665  | 2,267 |
|                            | Engine, Type 5 or 6                              | 4            | 7          | 0        | 1        | 0         | 1   | 25       | 28   | 66    |
|                            | Engine, Type 4                                   | 51           | 98         | 16       | 6        | 4         | 9   | 533      | 581  | 1,298 |
|                            | Engine, Type 5                                   | 1            | 12         | 4        | 1        | 1         | 3   | 37       | 37   | 96    |
|                            | Engine, Type 6                                   | 65           | 604        | 53       | 21       | 8         | 74  | 838      | 991  | 2,654 |
|                            | Engine, Type 7                                   | 0            | 2          | 2        | 0        | 0         | 2   | 5        | 2    | 13    |
| Engine, Strike Team        | Engine, Type Any                                 | 9            | 26         | 2        | 1        | 2         | 0   | 31       | 48   | 129   |
|                            | Engine, Strike Team, Type 3,4,5,6                | 0            | 1          | 0        | 1        | 0         | 0   | 0        | 0    | 2     |
|                            | Engine, Strike Team, Type 3                      | 0            | 0          | 0        | 0        | 0         | 0   | 0        | 0    | 0     |
|                            | Engine, Strike Team, Type 4                      | 0            | 0          | 0        | 0        | 0         | 0   | 0        | 0    | 0     |
|                            | Engine, Strike Team, Type 6                      | 0            | 1          | 0        | 0        | 0         | 0   | 0        | 0    | 1     |
| Heavy Equipment Task Force | 1  | 1            | 3          | 2        | 0        | 2         | 4   | 2        | 15   |       |
| Food Service, Mobile       | Food Service, Mobile                             | 3            | 0          | 5        | 0        | 1         | 0   | 5        | 0    | 14    |
| Gray Water Truck           | Gray Water Truck, Type 1                         | 0            | 0          | 0        | 0        | 0         | 0   | 0        | 0    | 0     |
|                            | Gray Water Truck, Type 2                         | 0            | 0          | 0        | 0        | 0         | 1   | 2        | 2    | 5     |
|                            | Gray Water Truck, Type 3                         | 3            | 0          | 0        | 1        | 0         | 0   | 6        | 7    | 17    |
|                            | Gray Water Truck, Type Any                       | 0            | 2          | 0        | 0        | 0         | 0   | 0        | 1    | 3     |
| Medical                    | Ambulance, Type 1                                | 1            | 12         | 4        | 0        | 0         | 6   | 5        | 8    | 36    |
|                            | Ambulance, Type 2                                | 1            | 40         | 3        | 3        | 1         | 8   | 5        | 17   | 78    |
|                            | Ambulance, Type 3                                | 0            | 0          | 0        | 0        | 0         | 0   | 0        | 0    | 0     |
|                            | Ambulance, Type Any                              | 2            | 2          | 1        | 0        | 0         | 1   | 5        | 9    | 20    |
|                            | Medic Vehicle                                    | 0            | 0          | 0        | 0        | 0         | 0   | 0        | 0    | 0     |
|                            | Medical Support Unit                             | 1            | 2          | 3        | 0        | 0         | 0   | 7        | 5    | 18    |
|                            | Rescue Vehicle                                   | 0            | 0          | 0        | 0        | 0         | 0   | 1        | 0    | 1     |
| Misc.                      | Backhoe  | 0            | 0          | 0        | 0        | 0         | 0   | 0        | 0    | 0     |
|                            | Balloon Lights                                   | 0            | 0          | 0        | 0        | 0         | 0   | 3        | 0    | 3     |
|                            | Chipper, Type 1                                  | 0            | 2          | 0        | 0        | 0         | 1   | 0        | 0    | 3     |

| Req Category Name | Req Catalog Item Name                           | Place Direct | Place Down | Place Up | Retrieve | Send Back | UTF | No Place | Fill | Count |
|-------------------|---|--------------|------------|----------|----------|-----------|-----|----------|------|-------|
|                   | Chipper, Type 2                                 | 2            | 25         | 2        | 0        | 1         | 4   | 6        | 11   | 51    |
|                   | Chipper, Type 3                                 | 0            | 2          | 0        | 0        | 0         | 1   | 0        | 0    | 3     |
|                   | Chipper, Type Any                               | 0            | 1          | 0        | 1        | 0         | 0   | 0        | 0    | 2     |
|                   | Chipper, Self-Loading                           | 0            | 1          | 0        | 0        | 0         | 0   | 0        | 0    | 1     |
|                   | Clerical Support Unit                           | 0            | 0          | 1        | 1        | 0         | 0   | 4        | 2    | 8     |
|                   | Dump Truck                                      | 0            | 0          | 0        | 0        | 0         | 0   | 12       | 5    | 17    |
|                   | Excavator, Type 1                               | 0            | 0          | 0        | 0        | 0         | 0   | 3        | 2    | 5     |
|                   | Excavator, Type 2                               | 2            | 5          | 1        | 1        | 0         | 3   | 12       | 12   | 36    |
|                   | Excavator, Type 3                               | 1            | 3          | 3        | 2        | 0         | 0   | 4        | 4    | 17    |
|                   | Excavator, Type 4                               | 1            | 1          | 0        | 1        | 0         | 0   | 1        | 1    | 5     |
|                   | Excavator, Type Any                             | 1            | 0          | 0        | 0        | 0         | 0   | 3        | 2    | 6     |
|                   | Feller Buncher, Type 1                          | 0            | 20         | 1        | 2        | 3         | 6   | 2        | 5    | 39    |
|                   | Feller Buncher, Type 2                          | 0            | 6          | 0        | 0        | 0         | 0   | 0        | 0    | 6     |
|                   | Feller Buncher, Type Any                        | 0            | 0          | 0        | 0        | 0         | 0   | 0        | 0    | 0     |
|                   | Forklift  | 0            | 0          | 0        | 0        | 0         | 0   | 3        | 2    | 5     |
|                   | Forwarder                                       | 0            | 0          | 0        | 0        | 0         | 0   | 0        | 0    | 0     |
|                   | Front End Loader                                | 0            | 0          | 0        | 0        | 0         | 0   | 4        | 1    | 5     |
|                   | Fuel Tender, Type 1                             | 0            | 4          | 0        | 0        | 0         | 2   | 2        | 3    | 11    |
|                   | Fuel Tender, Type 2                             | 6            | 3          | 0        | 0        | 0         | 1   | 6        | 5    | 21    |
|                   | Fuel Tender, Type 3                             | 2            | 9          | 0        | 0        | 1         | 5   | 7        | 10   | 34    |
|                   | Fuel Tender, Type Any                           | 5            | 3          | 3        | 2        | 0         | 2   | 5        | 5    | 25    |
|                   | Generator                                       | 0            | 0          | 0        | 0        | 0         | 0   | 15       | 0    | 15    |
|                   | Handwashing Station (Trailer Mounted), Type 1   | 1            | 0          | 0        | 0        | 0         | 0   | 5        | 3    | 9     |
|                   | Handwashing Station (Trailer Mounted), Type 2   | 2            | 0          | 0        | 0        | 0         | 0   | 12       | 12   | 26    |
|                   | Handwashing Station (Trailer Mounted), Type Any | 1            | 0          | 0        | 0        | 0         | 0   | 2        | 2    | 5     |
|                   | Helicopter Support Vehicle                      | 0            | 0          | 0        | 0        | 0         | 0   | 0        | 0    | 0     |
|                   | Heliwell  | 0            | 0          | 0        | 0        | 0         | 0   | 0        | 0    | 0     |
|                   | Lighting System, Truck Mounted                  | 0            | 0          | 0        | 0        | 0         | 0   | 0        | 0    | 0     |
|                   | Lighting System, Trailer Mounted                | 0            | 0          | 0        | 0        | 0         | 0   | 17       | 9    | 26    |
|                   | Log Loader                                      | 1            | 2          | 1        | 0        | 0         | 3   | 1        | 0    | 8     |
|                   | Masticator - Boom Mounted, Type 1               | 0            | 14         | 0        | 4        | 0         | 1   | 2        | 5    | 26    |
|                   | Masticator - Boom Mounted, Type 2               | 0            | 18         | 0        | 0        | 0         | 3   | 2        | 8    | 31    |
|                   | Masticator - Boom Mounted, Type 3               | 0            | 0          | 0        | 0        | 0         | 0   | 1        | 0    | 1     |
|                   | Masticator - Boom Mounted, Type 4               | 0            | 0          | 0        | 0        | 0         | 0   | 0        | 0    | 0     |
|                   | Masticator - Boom Mounted, Type Any             | 0            | 5          | 0        | 1        | 1         | 1   | 0        | 1    | 9     |
|                   | Pallet Jack                                     | 0            | 0          | 0        | 0        | 0         | 0   | 0        | 0    | 0     |
|                   | Palm IR   | 0            | 0          | 0        | 0        | 0         | 0   | 1        | 0    | 1     |
|                   | Phone, Satellite                                | 0            | 0          | 0        | 0        | 0         | 0   | 0        | 0    | 0     |
|                   | Pumper Cat, Type 3                              | 0            | 0          | 0        | 0        | 0         | 0   | 0        | 0    | 0     |
|                   | Pressure Washer                                 | 0            | 0          | 0        | 0        | 0         | 0   | 0        | 0    | 0     |
|                   | Refrigerated Trailer, Type 1                    | 1            | 0          | 0        | 1        | 0         | 0   | 2        | 2    | 6     |

| Req Category Name   | Req Catalog Item Name              | Place Direct | Place Down | Place Up | Retrieve | Send Back | UTF | No Place | Fill | Count |
|---------------------|------------------------------------|--------------|------------|----------|----------|-----------|-----|----------|------|-------|
|                     | Refrigerated Trailer, Type 2       | 1            | 3          | 1        | 0        | 0         | 0   | 2        | 3    | 10    |
|                     | Refrigerated Trailer, Type 3       | 1            | 0          | 0        | 0        | 0         | 0   | 2        | 2    | 5     |
|                     | Refrigerated Trailer, Type Any     | 0            | 4          | 0        | 0        | 0         | 1   | 1        | 2    | 8     |
|                     | Road Grader, Type 1                | 2            | 0          | 0        | 0        | 0         | 2   | 2        | 2    | 8     |
|                     | Road Grader, Type 2                | 2            | 1          | 2        | 0        | 0         | 1   | 4        | 4    | 14    |
|                     | Road Grader, Type Any              | 0            | 0          | 0        | 0        | 0         | 0   | 3        | 1    | 4     |
|                     | Service Truck w/ Mechanic, Type 1  | 3            | 7          | 1        | 1        | 0         | 2   | 5        | 11   | 30    |
|                     | Service Truck w/ Mechanic, Type 2  | 2            | 0          | 0        | 0        | 0         | 0   | 1        | 1    | 4     |
|                     | Skid-steer                         | 0            | 4          | 0        | 0        | 0         | 0   | 15       | 19   | 38    |
|                     | Skidder, Type 1                    | 0            | 14         | 0        | 4        | 0         | 1   | 2        | 5    | 26    |
|                     | Skidder, Type 2                    | 1            | 0          | 1        | 0        | 0         | 1   | 4        | 2    | 9     |
|                     | Skidder, Type Any                  | 0            | 0          | 0        | 0        | 0         | 0   | 0        | 0    | 0     |
|                     | Skidgine, Type 1                   | 0            | 2          | 0        | 0        | 0         | 0   | 0        | 1    | 3     |
|                     | Skidgine, Type 2                   | 1            | 0          | 0        | 0        | 0         | 0   | 1        | 1    | 3     |
|                     | Skidgine, Type 3                   | 1            | 0          | 0        | 0        | 0         | 0   | 1        | 3    | 5     |
|                     | Skidgine, Type Softtrack           | 0            | 2          | 0        | 0        | 0         | 0   | 0        | 1    | 3     |
|                     | Sleeper Unit, Mobile, Type 1       | 5            | 19         | 0        | 1        | 0         | 1   | 5        | 14   | 45    |
|                     | Sleeper Unit, Mobile, Type 2       | 0            | 2          | 0        | 0        | 0         | 0   | 0        | 0    | 2     |
|                     | Sleeper Unit, Mobile, Type Any     | 0            | 2          | 0        | 0        | 0         | 0   | 0        | 1    | 3     |
|                     | Strip Mulchers/Masticators, Type 1 | 0            | 7          | 0        | 0        | 0         | 2   | 0        | 2    | 11    |
|                     | Strip Mulchers/Masticators, Type 2 | 0            | 0          | 0        | 0        | 0         | 0   | 0        | 0    | 0     |
|                     | Spider Cord Distribution Box       | 0            | 0          | 0        | 0        | 0         | 0   | 0        | 0    | 0     |
|                     | Tent, Type 1                       | 0            | 0          | 0        | 0        | 0         | 0   | 0        | 0    | 0     |
|                     | Tent, Type 2                       | 0            | 0          | 0        | 0        | 0         | 0   | 0        | 0    | 0     |
|                     | Tent, Type 3                       | 0            | 0          | 0        | 0        | 0         | 0   | 52       | 32   | 84    |
|                     | Tent, Type 4                       | 0            | 0          | 0        | 0        | 0         | 0   | 43       | 22   | 65    |
|                     | Tent, Type Any                     | 0            | 0          | 0        | 0        | 0         | 0   | 0        | 0    | 0     |
|                     | Terra Torch                        | 0            | 0          | 0        | 0        | 0         | 0   | 0        | 0    | 1     |
|                     | Tractor Plow, Type 2               | 0            | 1          | 0        | 0        | 0         | 0   | 0        | 0    | 1     |
|                     | Tractor Plow, Type 3               | 0            | 1          | 0        | 0        | 0         | 0   | 0        | 0    | 1     |
|                     | Tractor Plow, Type 4               | 0            | 0          | 0        | 0        | 0         | 0   | 0        | 0    | 0     |
|                     | Tractor Plow, Type Any             | 0            | 0          | 0        | 0        | 0         | 0   | 0        | 0    | 0     |
|                     | Truck, Logging                     | 0            | 0          | 0        | 0        | 0         | 0   | 0        | 0    | 0     |
|                     | Truck, Tow                         | 0            | 0          | 0        | 0        | 0         | 0   | 2        | 0    | 2     |
|                     | Truck / Trailer, Refrigeration     | 0            | 5          | 0        | 1        | 0         | 0   | 1        | 2    | 9     |
|                     | Vibratory Roller, Asphalt/Gravel   | 0            | 1          | 0        | 1        | 0         | 1   | 1        | 1    | 5     |
|                     | Weed Washing Unit                  | 0            | 0          | 0        | 0        | 0         | 0   | 6        | 5    | 11    |
| Potable Water Truck | Potable Water Truck, Type 1        | 0            | 2          | 0        | 0        | 0         | 0   | 0        | 1    | 3     |
|                     | Potable Water Truck, Type 2        | 4            | 0          | 0        | 0        | 0         | 1   | 4        | 4    | 13    |
|                     | Potable Water Truck, Type 3        | 3            | 0          | 0        | 0        | 0         | 1   | 4        | 4    | 12    |
|                     | Potable Water Truck, Type Any      | 0            | 0          | 0        | 0        | 0         | 0   | 0        | 0    | 0     |
| Shower, Mobile      | Shower, Mobile                     | 0            | 0          | 6        | 0        | 1         | 0   | 8        | 1    | 16    |

| Req Category Name                                   | Req Catalog Item Name                      | Place Direct | Place Down | Place Up | Retrieve | Send Back | UTF | No Place | Fill | Count |
|---|--|--------------|------------|----------|----------|-----------|-----|----------|------|-------|
| Task Force  | Task Force                                 | 3            | 7          | 5        | 4        | 0         | 0   | 13       | 15   | 47    |
| Tender, Water (Support)                             | Tender, Water (Support), Type 1            | 2            | 0          | 0        | 2        | 0         | 0   | 30       | 30   | 64    |
|   | Tender, Water (Support), Type 2            | 19           | 9          | 1        | 2        | 0         | 1   | 88       | 89   | 209   |
|   | Tender, Water (Support), Type 3            | 1            | 0          | 0        | 0        | 0         | 0   | 5        | 4    | 10    |
|   | Tender, Water (Support), Type Any          | 3            | 12         | 1        | 0        | 2         | 2   | 20       | 23   | 63    |
| Tender, Water (Tactical)                            | Tender, Water (Tactical), Type 1           | 2            | 26         | 0        | 0        | 0         | 4   | 12       | 23   | 67    |
|   | Tender, Water (Tactical), Type 2           | 4            | 119        | 0        | 4        | 1         | 15  | 10       | 46   | 199   |
|   | Tender, Water (Tactical), Type Any         | 4            | 28         | 1        | 1        | 0         | 12  | 6        | 13   | 65    |
| Trailer   | Trailer                                    | 2            | 3          | 1        | 1        | 0         | 0   | 68       | 61   | 136   |
|   | Trailer - Communications                   | 0            | 0          | 0        | 0        | 0         | 0   | 0        | 0    | 0     |
|   | Trailer - Communications, Type 1           | 2            | 2          | 0        | 0        | 0         | 0   | 2        | 3    | 9     |
|   | Trailer - Communications, Type 2           | 2            | 0          | 0        | 1        | 0         | 0   | 4        | 3    | 10    |
|   | Trailer - Communications, Type Any         | 0            | 4          | 0        | 1        | 0         | 0   | 0        | 1    | 6     |
|   | Trailer - GIS Unit, Type 1                 | 0            | 0          | 0        | 0        | 0         | 0   | 0        | 0    | 0     |
|   | Trailer - GIS Unit, Type 2                 | 0            | 0          | 0        | 0        | 0         | 0   | 0        | 0    | 0     |
|   | Trailer - Helicopter Operations Support    | 2            | 0          | 0        | 0        | 0         | 0   | 0        | 0    | 2     |
|   | Trailer - Mobile Office                    | 0            | 0          | 0        | 0        | 0         | 0   | 3        | 3    | 6     |
|   | Trailer - Mobile Sleeper Unit              | 0            | 0          | 0        | 0        | 0         | 0   | 0        | 0    | 0     |
| Trailer - Operations                                | 0  | 0            | 0          | 0        | 0        | 0         | 0   | 0        | 0    |       |
| Transport.  | Transportation - Vehicle, Automobile       | 0            | 0          | 0        | 0        | 0         | 0   | 7        | 8    | 15    |
|   | Transportation, Boat                       | 0            | 0          | 0        | 0        | 0         | 0   | 7        | 7    | 14    |
|   | Transportation, Bus, Crew Carrier          | 8            | 1          | 0        | 2        | 0         | 0   | 15       | 22   | 48    |
|   | Transportation, Golf Cart                  | 0            | 0          | 0        | 0        | 0         | 0   | 1        | 1    | 2     |
|   | Transportation, Lowboy, Type 1             | 0            | 2          | 0        | 0        | 0         | 0   | 2        | 4    | 8     |
|   | Transportation, Lowboy, Type 2             | 0            | 0          | 0        | 0        | 0         | 0   | 1        | 0    | 1     |
|   | Transportation, Pickup                     | 12           | 0          | 0        | 0        | 0         | 0   | 0        | 0    | 12    |
|   | Transportation, Pickup, Type 1             | 17           | 4          | 2        | 4        | 0         | 0   | 327      | 335  | 689   |
|   | Transportation, Pickup, Type 2             | 2            | 3          | 1        | 1        | 0         | 1   | 40       | 27   | 75    |
|   | Transportation, Pickup, Type 3             | 0            | 4          | 0        | 0        | 0         | 2   | 5        | 6    | 17    |
|   | Transportation, Pickup, Type Any           | 4            | 6          | 3        | 2        | 0         | 4   | 70       | 65   | 154   |
|   | Transportation, Stakeside, Type 1          | 2            | 0          | 0        | 0        | 0         | 0   | 4        | 5    | 11    |
|   | Transportation, Stakeside, Type 2          | 1            | 0          | 0        | 1        | 0         | 0   | 6        | 5    | 13    |
|   | Transportation, Stakeside, Type Any        | 0            | 0          | 0        | 0        | 0         | 0   | 1        | 0    | 1     |
|   | Transportation, Tractor                    | 0            | 0          | 0        | 0        | 0         | 0   | 6        | 3    | 9     |
|   | Transportation, Tractor/Trailer            | 1            | 0          | 0        | 0        | 0         | 0   | 4        | 4    | 9     |
|   | Transportation, Truck, Utility, Type 1     | 0            | 0          | 0        | 0        | 0         | 0   | 0        | 0    | 0     |
|   | Transportation, Van, Box                   | 0            | 0          | 0        | 0        | 0         | 0   | 6        | 2    | 8     |
|   | Transportation, Van, Passenger             | 0            | 0          | 0        | 0        | 0         | 0   | 0        | 0    | 0     |
|   | Transportation, Vehicle, All Terrain (ATV) | 1            | 1          | 0        | 1        | 0         | 0   | 12       | 5    | 20    |
| Transportation, Vehicle, Sport Utility, Large (SUV) | 1  | 1            | 1          | 0        | 1        | 0         | 25  | 21       | 50   |       |
| Transportation, Vehicle, Sport Utility, Small (SUV) | 1  | 0            | 0          | 0        | 0        | 0         | 5   | 2        | 8    |       |
| Transportation, Vehicle, All Terrain (ATV)          | 1  | 1            | 0          | 1        | 0        | 0         | 12  | 5        | 20   |       |

| Req Category Name        | Req Catalog Item Name                          | Place Direct | Place Down   | Place Up   | Retrieve   | Send Back | UTF        | No Place     | Fill         | Count         |
|--------------------------|--|--------------|--------------|------------|------------|-----------|------------|--------------|--------------|---------------|
|                          | Transportation, Vehicle, Utility Terrain (UTV) | 11           | 8            | 2          | 4          | 2         | 1          | 132          | 104          | 264           |
| <b>Equipment Summary</b> |  | <b>440</b>   | <b>2,462</b> | <b>224</b> | <b>147</b> | <b>45</b> | <b>411</b> | <b>3,741</b> | <b>4,253</b> | <b>11,734</b> |

## Overhead Resource Order Summary

This summary includes all overhead positions that were ordered within the geographic area. It also includes out of region orders that were filled with Great Basin resources.

| Req Category Name | Req Catalog Item Name                              | Place Direct | Place Down | Place Up | Retrieve | Send Back | UTF | No Place | Fill | Count |
|-------------------|--|--------------|------------|----------|----------|-----------|-----|----------|------|-------|
| Groups            | Faller, Single                                     | 0            | 0          | 0        | 0        | 0         | 0   | 0        | 0    | 0     |
|                   | Module, Faller                                     | 0            | 5          | 7        | 5        | 0         | 2   | 12       | 14   | 45    |
|                   | Module, Fuels                                      | 2            | 82         | 2        | 1        | 0         | 0   | 9        | 45   | 141   |
|                   | Module, Rapid Extraction Support (GACC ONLY)       | 0            | 0          | 0        | 0        | 0         | 0   | 0        | 0    | 0     |
|                   | Module, Suppression                                | 3            | 84         | 4        | 1        | 0         | 2   | 29       | 36   | 159   |
|                   | Module, Wildland Fire, Type 1                      | 3            | 61         | 13       | 3        | 0         | 7   | 28       | 25   | 140   |
|                   | Module, Wildland Fire, Type 2                      | 5            | 56         | 13       | 4        | 0         | 18  | 32       | 29   | 157   |
|                   | Squad  | 1            | 6          | 0        | 0        | 0         | 0   | 10       | 15   | 32    |
|                   | Team, Burned Area Emergency Response               | 0            | 2          | 0        | 0        | 0         | 0   | 0        | 1    | 3     |
|                   | Team, Buying                                       | 0            | 4          | 6        | 0        | 1         | 0   | 6        | 7    | 24    |
|                   | Team, Critical Incident Stress                     | 0            | 0          | 0        | 0        | 0         | 0   | 0        | 0    | 0     |
|                   | Team, Fire Prevention/Education                    | 0            | 0          | 1        | 0        | 0         | 0   | 1        | 0    | 2     |
|                   | Team, Incident Medical                             | 0            | 2          | 0        | 0        | 0         | 0   | 1        | 0    | 3     |
|                   | Team, Complex Incident Management                  | 0            | 4          | 1        | 0        | 0         | 0   | 1        | 3    | 9     |
|                   | Team, Type 1 Long                                  | 0            | 0          | 0        | 0        | 0         | 0   | 0        | 0    | 0     |
|                   | Team, Type 1 Short                                 | 0            | 2          | 0        | 0        | 0         | 0   | 0        | 0    | 2     |
|                   | Team, Type 2 Long                                  | 0            | 3          | 6        | 0        | 0         | 0   | 6        | 8    | 23    |
|                   | Team, Type 2 Short                                 | 0            | 3          | 0        | 0        | 0         | 0   | 0        | 1    | 4     |
|                   | Team, Type 3                                       | 0            | 22         | 2        | 2        | 0         | 0   | 4        | 16   | 46    |
|                   | Team, Natl Incident Management Organization (NIMO) | 0            | 0          | 1        | 0        | 0         | 0   | 1        | 0    | 2     |
| Positions         | AABI – AVIAN AVIATION BIOLOGIST                    | 0            | 0          | 0        | 0        | 0         | 0   | 1        | 0    | 1     |
|                   | AADM - AGENCY ADMINISTRATOR                        | 0            | 6          | 0        | 0        | 0         | 0   | 4        | 7    | 17    |
|                   | ABRO - AIRCRAFT BASE RADIO OPERATOR                | 5            | 91         | 7        | 2        | 1         | 21  | 18       | 23   | 168   |
|                   | ACDP - AIRCRAFT DISPATCHER                         | 15           | 277        | 25       | 6        | 0         | 55  | 93       | 126  | 597   |
|                   | ACLC - ASSISTANT AREA COMMAND, LOGISTICS CHIEF     | 0            | 0          | 0        | 0        | 0         | 0   | 0        | 0    | 0     |
|                   | ACPC - ASSISTANT AREA COMMAND, PLANNING CHIEF      | 0            | 0          | 0        | 0        | 0         | 0   | 0        | 0    | 0     |
|                   | ACMR – ASSISTANT CACHE MANAGER                     | 0            | 4          | 0        | 0        | 0         | 0   | 0        | 2    | 6     |

| Req Category Name | Req Catalog Item Name   | Place Direct | Place Down | Place Up | Retrieve | Send Back | UTF | No Place | Fill | Count |
|-------------------|---|--------------|------------|----------|----------|-----------|-----|----------|------|-------|
|                   | AEMF - ADVANCED EMERGENCY MEDICAL TECHNICIAN, FIRELINE              | 3            | 9          | 4        | 1        | 0         | 5   | 14       | 14   | 50    |
|                   | AEMT - ADVANCED EMERGENCY MEDICAL TECHNICIAN                        | 0            | 1          | 0        | 0        | 0         | 0   | 0        | 0    | 1     |
|                   | AITS - AIR TACTICAL SUPERVISOR                                      | 20           | 12         | 4        | 1        | 0         | 2   | 79       | 70   | 188   |
|                   | AOBD - AIR OPERATIONS BRANCH DIRECTOR                               | 23           | 26         | 4        | 3        | 0         | 8   | 27       | 30   | 121   |
|                   | AOBS - AERIAL OBSERVER  | 0            | 8          | 0        | 0        | 0         | 0   | 0        | 2    | 10    |
|                   | ARCH - ARCHEOLOGIST   | 1            | 101        | 0        | 3        | 0         | 12  | 9        | 22   | 148   |
|                   | AREP - AGENCY REPRESENTATIVE  | 0            | 26         | 0        | 0        | 0         | 2   | 5        | 14   | 47    |
|                   | ARPA - ARCHAEOLOGIST  | 0            | 2          | 0        | 0        | 0         | 0   | 0        | 0    | 2     |
|                   | ASCO - AIRSPACE COORDINATOR   | 0            | 4          | 0        | 0        | 0         | 0   | 1        | 2    | 7     |
|                   | ASGS - AIR SUPPORT GROUP SUPERVISOR                                 | 19           | 48         | 4        | 2        | 0         | 3   | 27       | 27   | 130   |
|                   | ATBM - AIRTANKER BASE MANAGER                                       | 4            | 76         | 16       | 2        | 0         | 9   | 26       | 40   | 173   |
|                   | ATGS - AIR TACTICAL GROUP SUPERVISOR                                | 87           | 134        | 41       | 14       | 8         | 11  | 304      | 320  | 919   |
|                   | ATIM - AIRCRAFT TIME KEEPER   | 0            | 10         | 0        | 1        | 0         | 0   | 4        | 7    | 22    |
|                   | AVIN - AVIATION INSPECTOR   | 0            | 0          | 0        | 0        | 0         | 0   | 0        | 0    | 0     |
|                   | BABI - BAER - BIOLOGIST   | 0            | 0          | 0        | 0        | 0         | 0   | 0        | 0    | 0     |
|                   | BABO - BAER - BOTANIST  | 0            | 0          | 0        | 0        | 0         | 0   | 0        | 0    | 0     |
|                   | BACS - BAER - CULTURAL RESOURCE SPECIALIST                          | 0            | 0          | 0        | 0        | 0         | 0   | 0        | 0    | 0     |
|                   | BADO - BAER - DOCUMENT SPECIALIST                                   | 0            | 4          | 0        | 0        | 0         | 0   | 0        | 2    | 6     |
|                   | BAEL - BAER - TEAM LEADER   | 0            | 2          | 0        | 0        | 0         | 0   | 2        | 2    | 6     |
|                   | BAES - BURNED AREA RESPONSE SPECIALIST                              | 6            | 21         | 1        | 0        | 2         | 1   | 28       | 36   | 95    |
|                   | BAGE - BAER - FORESTER  | 0            | 0          | 0        | 0        | 0         | 0   | 0        | 0    | 0     |
|                   | BAHY - BAER - HYDROLOGIST   | 0            | 2          | 0        | 0        | 0         | 0   | 0        | 1    | 3     |
|                   | BASS - BAER - SOIL SCIENTIST  | 0            | 4          | 0        | 0        | 0         | 0   | 0        | 2    | 6     |
|                   | BCMG - BASE CAMP MANAGER  | 24           | 159        | 16       | 4        | 2         | 20  | 59       | 73   | 357   |
|                   | BOTA - BOTANIST   | 0            | 0          | 1        | 0        | 0         | 0   | 1        | 0    | 2     |
|                   | BTOP - BOAT OPERATOR LESS THAN 25 FEET LENGTH                       | 0            | 2          | 0        | 0        | 0         | 0   | 0        | 1    | 3     |
|                   | BUYL - BUYING TEAM LEADER   | 13           | 4          | 0        | 0        | 0         | 0   | 11       | 16   | 44    |
|                   | BUYM - BUYING TEAM MEMBER   | 39           | 25         | 1        | 1        | 0         | 2   | 46       | 53   | 167   |
|                   | CACB - CAMP CREW BOSS   | 0            | 2          | 0        | 1        | 0         | 0   | 17       | 18   | 38    |
|                   | CAMP - CAMP HELP  | 0            | 0          | 0        | 0        | 0         | 0   | 139      | 141  | 280   |
|                   | CDSP – CACHE DEMOBILIZATION SPECIALIST                              | 0            | 0          | 0        | 0        | 0         | 0   | 1        | 2    | 3     |
|                   | CISL - CRITICAL INCIDENT STRESS MANAGEMENT TEAM LEADER (ALL HAZARD) | 0            | 8          | 0        | 0        | 0         | 0   | 4        | 6    | 18    |
|                   | CISM - CRITICAL INCIDENT STRESS MANAGEMENT TEAM MEMBER (ALL HAZARD) | 0            | 2          | 0        | 0        | 0         | 0   | 6        | 2    | 10    |
|                   | CLMS - CLAIMS SPECIALIST  | 0            | 1          | 0        | 0        | 0         | 0   | 0        | 0    | 1     |
|                   | COMC - COMMUNICATIONS COORDINATOR                                   | 0            | 36         | 1        | 0        | 0         | 1   | 1        | 16   | 55    |
|                   | COML - COMMUNICATIONS UNIT LEADER                                   | 19           | 55         | 6        | 0        | 0         | 10  | 22       | 34   | 146   |

| Req Category Name | Req Catalog Item Name                           | Place Direct | Place Down | Place Up | Retrieve | Send Back | UTF | No Place | Fill  | Count |
|-------------------|---|--------------|------------|----------|----------|-----------|-----|----------|-------|-------|
|                   | COMP - COMPENSATION/CLAIMS UNIT LEADER          | 10           | 14         | 0        | 1        | 0         | 1   | 11       | 11    | 48    |
|                   | COMT - INCIDENT COMMUNICATIONS TECHNICIAN       | 22           | 115        | 6        | 2        | 1         | 15  | 44       | 59    | 264   |
|                   | CONO – CONTRACTING OFFICER                      | 1            | 0          | 0        | 0        | 0         | 0   | 0        | 0     | 1     |
|                   | COOK - COOK                                     | 0            | 0          | 0        | 0        | 0         | 0   | 0        | 0     | 0     |
|                   | COPA - Contracting Officer's Purchasing Agent   | 0            | 2          | 1        | 0        | 0         | 0   | 2        | 3     | 8     |
|                   | CORD - EXPANDED DISPATCH COORDINATOR            | 0            | 19         | 0        | 1        | 0         | 0   | 6        | 15    | 41    |
|                   | COST - COST UNIT LEADER                         | 16           | 14         | 2        | 0        | 0         | 2   | 26       | 22    | 82    |
|                   | CREP - CREW REPRESENTATIVE                      | 1            | 5          | 0        | 0        | 0         | 0   | 3        | 3     | 12    |
|                   | CRWB - CREW BOSS                                | 31           | 39         | 1        | 1        | 0         | 8   | 777      | 800   | 1,657 |
|                   | CULS - CULTURAL SPECIALIST                      | 0            | 0          | 0        | 0        | 0         | 0   | 0        | 0     | 0     |
|                   | DECK - DECK COORDINATOR                         | 0            | 41         | 0        | 1        | 0         | 2   | 0        | 1     | 45    |
|                   | DIVA – DIVISION/GROUP SUPERVISOR ALL-HAZARDS    | 0            | 0          | 0        | 0        | 0         | 0   | 1        | 0     | 1     |
|                   | DIVR - DIVER                                    | 0            | 0          | 0        | 0        | 0         | 0   | 1        | 1     | 2     |
|                   | DIVS - DIVISION/GROUP SUPERVISOR                | 105          | 271        | 19       | 10       | 1         | 28  | 266      | 304   | 1,004 |
|                   | DMOB - DEMOBILIZATION UNIT LEADER               | 11           | 45         | 3        | 3        | 1         | 9   | 15       | 18    | 105   |
|                   | DOCL - DOCUMENTATION UNIT LEADER                | 5            | 23         | 2        | 0        | 0         | 3   | 7        | 9     | 49    |
|                   | DPRO - DISPLAY PROCESSOR                        | 0            | 9          | 0        | 0        | 0         | 0   | 0        | 0     | 9     |
|                   | DRIV - DRIVER/OPERATOR                          | 1            | 9          | 2        | 0        | 0         | 1   | 98       | 102   | 213   |
|                   | DRVA - DRIVER CLASS A                           | 0            | 3          | 0        | 0        | 0         | 0   | 0        | 0     | 3     |
|                   | DZIA - DOZER OPERATOR, INITIAL ATTACK           | 12           | 51         | 1        | 0        | 0         | 5   | 75       | 92    | 236   |
|                   | DZOP - DOZER OPERATOR                           | 3            | 19         | 1        | 0        | 0         | 2   | 20       | 23    | 68    |
|                   | EDRC - EXPANDED DISPATCH RECORDER               | 6            | 56         | 18       | 2        | 0         | 4   | 80       | 74    | 240   |
|                   | EDSD - SUPPORT DISPATCHER                       | 6            | 154        | 25       | 8        | 1         | 38  | 75       | 94    | 401   |
|                   | EDSP - SUPERVISORY DISPATCHER                   | 0            | 72         | 10       | 0        | 0         | 14  | 29       | 42    | 167   |
|                   | EMPF - PARAMEDIC, FIRELINE                      | 6            | 154        | 20       | 5        | 0         | 49  | 44       | 76    | 354   |
|                   | EMTB - EMERGENCY MEDICAL TECHNICIAN - BASIC     | 0            | 6          | 2        | 1        | 0         | 5   | 10       | 9     | 33    |
|                   | EMTF - EMERGENCY MEDICAL TECHNICIAN, FIRELINE   | 5            | 49         | 13       | 3        | 3         | 13  | 23       | 31    | 140   |
|                   | EMTP - EMERGENCY MEDICAL TECHNICIAN - PARAMEDIC | 3            | 5          | 1        | 1        | 0         | 0   | 3        | 4     | 17    |
|                   | ENGB - ENGINE BOSS                              | 238          | 240        | 51       | 9        | 1         | 45  | 1,925    | 2,146 | 4,655 |
|                   | ENOP - ENGINE OPERATOR                          | 27           | 26         | 0        | 3        | 0         | 5   | 265      | 296   | 622   |
|                   | EQPI - EQUIPMENT INSPECTOR                      | 0            | 20         | 2        | 1        | 0         | 3   | 15       | 12    | 53    |
|                   | EQPM - EQUIPMENT MANAGER                        | 12           | 124        | 7        | 1        | 0         | 10  | 22       | 43    | 219   |
|                   | EQTR - EQUIPMENT TIME RECORDER                  | 17           | 77         | 7        | 2        | 0         | 14  | 38       | 40    | 195   |
|                   | ESFA - FEMA ESF #4 ADMINISTRATIVE SUPPORT       | 0            | 0          | 0        | 0        | 0         | 0   | 0        | 0     | 0     |
|                   | ESFL - FEMA ESF #4 PRIMARY LEADER               | 0            | 1          | 0        | 0        | 0         | 0   | 1        | 0     | 2     |
|                   | ESFL - FEMA ESF #4 WILDLAND SUPPORT             | 0            | 1          | 0        | 0        | 0         | 0   | 1        | 1     | 3     |
|                   | FACL - FACILITIES UNIT LEADER                   | 18           | 70         | 2        | 3        | 0         | 11  | 28       | 35    | 167   |
|                   | FAL1 - FALLER, ADVANCED                         | 1            | 7          | 0        | 0        | 0         | 1   | 19       | 23    | 51    |
|                   | FAL2 - FALLER, INTERMEDIATE                     | 8            | 2          | 0        | 1        | 0         | 0   | 158      | 158   | 327   |

| Req Category Name | Req Catalog Item Name                               | Place Direct | Place Down | Place Up | Retrieve | Send Back | UTF | No Place | Fill  | Count  |
|-------------------|---|--------------|------------|----------|----------|-----------|-----|----------|-------|--------|
|                   | FAL3 - FALLER, BASIC                                | 5            | 0          | 0        | 0        | 0         | 0   | 180      | 183   | 368    |
|                   | FBAN - FIRE BEHAVIOR ANALYST                        | 7            | 24         | 5        | 1        | 0         | 11  | 22       | 9     | 79     |
|                   | FCMG - FIRE CACHE MANAGER                           | 1            | 4          | 0        | 0        | 0         | 1   | 2        | 1     | 9      |
|                   | FDUL - FOOD UNIT LEADER                             | 16           | 72         | 4        | 0        | 0         | 14  | 20       | 28    | 154    |
|                   | FELB - FELLING BOSS (SINGLE RESOURCE)               | 0            | 127        | 3        | 1        | 0         | 24  | 3        | 6     | 164    |
|                   | FEMO - FIRE EFFECTS MONITOR                         | 0            | 16         | 1        | 0        | 0         | 6   | 8        | 9     | 40     |
|                   | FFT1 - FIREFIGHTER, TYPE 1                          | 285          | 182        | 49       | 17       | 8         | 28  | 2,832    | 3,039 | 6,440  |
|                   | FFT2 - FIREFIGHTER, TYPE 2                          | 434          | 156        | 62       | 28       | 1         | 10  | 6,171    | 6,405 | 13,267 |
|                   | FIRB - FIRING BOSS                                  | 42           | 49         | 17       | 1        | 0         | 5   | 121      | 157   | 392    |
|                   | FLOP - FORK LIFT OPERATOR                           | 0            | 4          | 0        | 0        | 0         | 1   | 0        | 0     | 5      |
|                   | FOBS - FIELD OBSERVER                               | 2            | 81         | 4        | 2        | 0         | 13  | 8        | 17    | 127    |
|                   | FSC1 - FINANCE/ADMINISTRATION SECTION CHIEF, TYPE 1 | 3            | 0          | 0        | 0        | 0         | 0   | 6        | 4     | 13     |
|                   | FSC2 - FINANCE/ADMINISTRATION SECTION CHIEF, TYPE 2 | 1            | 3          | 0        | 0        | 0         | 0   | 7        | 5     | 16     |
|                   | FSC3 - FINANCE/ADMINISTRATION SECTION CHIEF TYPE 3  | 18           | 44         | 2        | 0        | 0         | 5   | 35       | 43    | 147    |
|                   | FSCC - FINANCE/ADMINISTRATION SECTION CHIEF COMPLEX | 11           | 4          | 0        | 0        | 0         | 0   | 13       | 13    | 41     |
|                   | FWBM - FIXED WING BASE MANAGER                      | 0            | 0          | 0        | 0        | 0         | 0   | 0        | 0     | 0      |
|                   | FWPT - FIXED WING PARKING TENDER                    | 6            | 80         | 14       | 3        | 1         | 7   | 59       | 78    | 248    |
|                   | GISS - GIS SPECIALIST                               | 44           | 110        | 7        | 2        | 0         | 14  | 63       | 86    | 326    |
|                   | GMEC - GENERAL MECHANIC                             | 0            | 2          | 0        | 1        | 0         | 0   | 1        | 1     | 5      |
|                   | GSUL - GROUND SUPPORT UNIT LEADER                   | 22           | 37         | 2        | 0        | 0         | 7   | 24       | 24    | 116    |
|                   | HEB1 - HELIBASE MANAGER, 6 OR MORE HELICOPTERS      | 0            | 0          | 0        | 0        | 0         | 0   | 0        | 0     | 0      |
|                   | HEBM - HELIBASE MANAGER                             | 4            | 97         | 10       | 3        | 1         | 0   | 23       | 26    | 178    |
|                   | HECM - HELICOPTER CREWMEMBER                        | 202          | 409        | 78       | 16       | 4         | 0   | 1,504    | 1,693 | 3,977  |
|                   | HEQB - HEAVY EQUIPMENT BOSS, SINGLE RESOURCE        | 19           | 384        | 28       | 8        | 5         | 0   | 62       | 131   | 714    |
|                   | HERS - HELICOPTER RAPPEL SPOTTER                    | 21           | 4          | 1        | 0        | 0         | 0   | 13       | 32    | 71     |
|                   | HLCO - HELICOPTER COORDINATOR                       | 0            | 32         | 2        | 0        | 0         | 2   | 11       | 9     | 56     |
|                   | HLIA - Hospital Liaison                             | 0            | 4          | 1        | 0        | 0         | 0   | 1        | 0     | 7      |
|                   | HMGB - HELICOPTER MANAGER, SINGLE RESOURCE          | 190          | 391        | 78       | 23       | 5         | 0   | 808      | 1,004 | 2,572  |
|                   | HPIL - HELICOPTER PILOT                             | 0            | 0          | 0        | 0        | 0         | 0   | 0        | 0     | 0      |
|                   | HRAP - HELICOPTER RAPPELER                          | 111          | 145        | 11       | 2        | 0         | 26  | 72       | 193   | 560    |
|                   | HRSP - HUMAN RESOURCE SPECIALIST                    | 6            | 10         | 1        | 0        | 0         | 0   | 10       | 9     | 36     |
|                   | HTMG - HELITORCH MANAGER                            | 5            | 3          | 9        | 1        | 1         | 0   | 17       | 9     | 51     |
|                   | HTMM - HELITORCH MIXMASTER                          | 13           | 6          | 17       | 1        | 1         | 0   | 30       | 20    | 92     |
|                   | HTPT - HELITORCH PARKING TENDER                     | 5            | 0          | 9        | 0        | 0         | 4   | 19       | 8     | 45     |
|                   | IADP - INITIAL ATTACK DISPATCHER                    | 14           | 242        | 33       | 7        | 1         | 0   | 171      | 209   | 696    |
|                   | IARR - INTERAGENCY RESOURCE REPRESENTATIVE          | 0            | 32         | 0        | 0        | 0         | 1   | 3        | 0     | 50     |
|                   | ICA3 - ALL - HAZARDS INCIDENT COMMANDER TYPE 3      | 0            | 2          | 0        | 0        | 0         | 1   | 0        | 1     | 4      |
|                   | ICCI - INCIDENT COMMANDER, COMPLEX                  | 20           | 2          | 0        | 0        | 0         | 0   | 25       | 24    | 71     |

| Req Category Name | Req Catalog Item Name                                   | Place Direct | Place Down | Place Up | Retrieve | Send Back | UTF | No Place | Fill | Count |
|-------------------|---|--------------|------------|----------|----------|-----------|-----|----------|------|-------|
|                   | ICPI - INCIDENT CONTRACT PROJECT INSPECTOR              | 0            | 10         | 1        | 0        | 0         | 2   | 18       | 19   | 50    |
|                   | ICT1 - INCIDENT COMMANDER, TYPE 1                       | 8            | 2          | 0        | 0        | 0         | 0   | 9        | 0    | 29    |
|                   | ICT2 - INCIDENT COMMANDER, TYPE 2                       | 1            | 2          | 0        | 0        | 0         | 0   | 1        | 0    | 5     |
|                   | ICT3 - INCIDENT COMMANDER, TYPE 3                       | 49           | 132        | 12       | 3        | 2         | 0   | 155      | 192  | 562   |
|                   | ICT4 - INCIDENT COMMANDER, TYPE 4                       | 40           | 86         | 7        | 4        | 0         | 1   | 170      | 211  | 533   |
|                   | ICT5 - INCIDENT COMMANDER, TYPE 5                       | 25           | 21         | 5        | 2        | 0         | 3   | 332      | 352  | 740   |
|                   | IHCS - HOTSHOT SUPERINTENDENT                           | 0            | 0          | 0        | 0        | 0         | 0   | 0        | 0    | 0     |
|                   | IMET - INCIDENT METEOROLOGIST                           | 1            | 29         | 11       | 5        | 1         | 0   | 0        | 8    | 77    |
|                   | IMSM - INCIDENT MEDICAL SPECIALIST MANAGER              | 0            | 2          | 0        | 0        | 0         | 0   | 0        | 0    | 2     |
|                   | IMST - INCIDENT MEDICAL SPECIALIST TECHNICIAN           | 0            | 1          | 0        | 0        | 0         | 0   | 0        | 0    | 1     |
|                   | INBA - INCIDENT BUSINESS ADVISOR                        | 2            | 44         | 7        | 2        | 0         | 1   | 17       | 27   | 101   |
|                   | INCM - INCIDENT COMMUNICATIONS MANAGER                  | 4            | 42         | 5        | 1        | 0         | 10  | 11       | 10   | 83    |
|                   | INTS - INTELLIGENCE SUPPORT                             | 0            | 3          | 0        | 0        | 0         | 0   | 0        | 1    | 6     |
|                   | INVF - WILDLAND FIRE INVESTIGATOR                       | 5            | 48         | 12       | 1        | 0         | 8   | 143      | 139  | 356   |
|                   | IRIN - INFRARED INTERPRETER                             | 0            | 14         | 1        | 0        | 0         | 1   | 0        | 1    | 25    |
|                   | ITSS - INCIDENT TECHNOLOGY SUPPORT SPECIALIST           | 21           | 23         | 1        | 0        | 0         | 1   | 25       | 25   | 96    |
|                   | LEO1 - LAW ENFORCEMENT OFFICER LEVEL 1 (ALL HAZARD)     | 0            | 2          | 0        | 0        | 0         | 0   | 0        | 0    | 2     |
|                   | LEO1 - LAW ENFORCEMENT OFFICER LEVEL 2 (ALL HAZARD)     | 0            | 0          | 0        | 0        | 0         | 0   | 0        | 0    | 0     |
|                   | LOAD - LOADMASTER                                       | 0            | 0          | 0        | 0        | 0         | 0   | 0        | 0    | 0     |
|                   | LOFR - LIAISON OFFICER                                  | 18           | 36         | 1        | 0        | 0         | 2   | 25       | 30   | 112   |
|                   | LPIL - LEADPLANE PILOT                                  | 11           | 7          | 4        | 2        | 0         | 1   | 85       | 77   | 188   |
|                   | LSC1 - LOGISTICS SECTION CHIEF, TYPE 1                  | 15           | 7          | 0        | 0        | 0         | 0   | 10       | 21   | 53    |
|                   | LSC2 - LOGISTICS SECTION CHIEF, TYPE 2                  | 14           | 14         | 0        | 0        | 0         | 0   | 19       | 19   | 66    |
|                   | LSC3 - LOGISTICS SECTION CHIEF TYPE 3                   | 19           | 38         | 3        | 1        | 0         | 8   | 41       | 42   | 152   |
|                   | LSCC – LOGISTICS SECTION CHIEF COMPLEX                  | 12           | 9          | 1        | 1        | 0         | 1   | 11       | 16   | 52    |
|                   | LTAN - LONG TERM FIRE ANALYST                           | 8            | 23         | 1        | 0        | 0         | 3   | 13       | 21   | 69    |
|                   | MABM - MAFFS AIRTANKER BASE MANAGER                     | 0            | 2          | 0        | 0        | 0         | 0   | 0        | 2    | 4     |
|                   | MABS - MAFFS TANKER BASE SPECIALIST                     | 0            | 2          | 0        | 0        | 0         | 0   | 0        | 1    | 3     |
|                   | MAFF – MAFFSS LIASON OFFICER                            | 0            | 6          | 0        | 0        | 0         | 0   | 0        | 3    | 9     |
|                   | MALO – MAFFSS ASSISTANT LIASON OFFICER                  | 0            | 2          | 0        | 0        | 0         | 0   | 0        | 1    | 3     |
|                   | MASO - MAFFSS SAFETY OFFICER                            | 0            | 4          | 0        | 0        | 0         | 0   | 0        | 2    | 6     |
|                   | MCCO - MAC GROUP COORDINATOR                            | 0            | 0          | 0        | 0        | 0         | 0   | 0        | 0    | 0     |
|                   | MEDL - MEDICAL UNIT LEADER                              | 38           | 29         | 3        | 2        | 0         | 6   | 56       | 51   | 185   |
|                   | MXMS - MIXMASTER  | 0            | 17         | 2        | 0        | 0         | 6   | 0        | 2    | 27    |
|                   | OPBD - OPERATIONS BRANCH DIRECTOR                       | 8            | 24         | 0        | 0        | 0         | 0   | 0        | 8    | 51    |
|                   | OPS3 - OPERATIONS SECTION CHIEF, TYPE 3 (WILDLAND FIRE) | 12           | 7          | 0        | 0        | 0         | 1   | 18       | 20   | 58    |
|                   | ORDM - ORDERING MANAGER                                 | 15           | 56         | 3        | 2        | 0         | 7   | 24       | 27   | 134   |
|                   | OSA2 – ALL – HAZARDS OPERATIONS SECTION CHIEF TYPE 2    | 1            | 6          | 0        | 0        | 0         | 0   | 0        | 4    | 11    |

| Req Category Name | Req Catalog Item Name                                  | Place Direct | Place Down | Place Up | Retrieve | Send Back | UTF | No Place | Fill | Count |
|-------------------|--|--------------|------------|----------|----------|-----------|-----|----------|------|-------|
|                   | OSC1 - OPERATIONS SECTION CHIEF, TYPE 1                | 10           | 4          | 0        | 1        | 0         | 0   | 10       | 11   | 36    |
|                   | OSC2 - OPERATIONS SECTION CHIEF, TYPE 2                | 10           | 17         | 0        | 1        | 0         | 1   | 14       | 12   | 55    |
|                   | OSC3 - OPERATIONS SECTION CHIEF, TYPE 3 (ALL HAZARD)   | 1            | 2          | 0        | 0        | 0         | 0   | 0        | 1    | 4     |
|                   | OSSC – OPERATIONS SECTION CHIEF COMPLEX                | 41           | 21         | 1        | 1        | 0         | 2   | 45       | 54   | 165   |
|                   | PACK - PACKER  | 0            | 2          | 0        | 0        | 0         | 0   | 0        | 1    | 3     |
|                   | PETL - PREVENTION EDUCATION TEAM LEADER                | 0            | 1          | 1        | 0        | 0         | 0   | 0        | 1    | 4     |
|                   | PETM - PREVENTION EDUCATION TEAM MEMBER                | 4            | 6          | 1        | 0        | 0         | 0   | 0        | 3    | 23    |
|                   | PILO - FIXED OR ROTOR WING PILOT                       | 11           | 6          | 3        | 1        | 0         | 1   | 79       | 77   | 178   |
|                   | PIO1 - PUBLIC INFORMATION OFFICER, TYPE 1              | 8            | 26         | 5        | 0        | 0         | 7   | 11       | 16   | 73    |
|                   | PIO2 - PUBLIC INFORMATION OFFICER, TYPE 2              | 16           | 77         | 4        | 2        | 0         | 14  | 24       | 36   | 173   |
|                   | PIO3 - PUBLIC INFORMATION OFFICER, TYPE 3 (ALL HAZARD) | 23           | 127        | 22       | 3        | 0         | 27  | 60       | 63   | 325   |
|                   | PIOC - PUBLIC INFORMATION OFFICER, COMPLEX             | 22           | 27         | 6        | 1        | 0         | 3   | 30       | 39   | 128   |
|                   | PIOF - PUBLIC INFORMATION OFFICER                      | 0            | 32         | 3        | 0        | 0         | 10  | 0        | 8    | 57    |
|                   | PIOT - PUBLIC INFORMATION OFFICER, TECHNICIAN          | 2            | 8          | 1        | 0        | 0         | 0   | 10       | 11   | 32    |
|                   | PLDO - PLASTIC SPHERE DISPENSER OPERATOR               | 2            | 17         | 0        | 0        | 0         | 0   | 0        | 6    | 30    |
|                   | PREV - PREVENTION TECHNICIAN                           | 7            | 163        | 9        | 0        | 0         | 2   | 14       | 23   | 238   |
|                   | PROC - PROCUREMENT UNIT LEADER                         | 1            | 16         | 2        | 1        | 0         | 5   | 0        | 5    | 34    |
|                   | PSC1 - PLANNING SECTION CHIEF, TYPE 1                  | 7            | 5          | 0        | 0        | 0         | 1   | 0        | 7    | 28    |
|                   | PSC2 - PLANNING SECTION CHIEF, TYPE 2                  | 4            | 16         | 0        | 0        | 0         | 1   | 0        | 5    | 38    |
|                   | PSC3 - PLANNING SECTION CHIEF, TYPE 3                  | 26           | 34         | 10       | 4        | 0         | 1   | 51       | 39   | 170   |
|                   | PSSC – PLANNING SECTION CHIEF COMPLEX                  | 16           | 6          | 1        | 0        | 0         | 0   | 22       | 20   | 65    |
|                   | PTRC - PERSONNEL TIME RECORDER                         | 28           | 70         | 3        | 3        | 0         | 3   | 50       | 63   | 231   |
|                   | RADO - RADIO OPERATOR                                  | 4            | 192        | 55       | 5        | 0         | 3   | 62       | 53   | 459   |
|                   | RAMP - RAMP MANAGER                                    | 2            | 71         | 20       | 3        | 0         | 2   | 42       | 43   | 193   |
|                   | RCDM - RECEIVING/DISTRIBUTION MANAGER                  | 18           | 92         | 8        | 0        | 0         | 14  | 27       | 39   | 198   |
|                   | READ - RESOURCE ADVISOR                                | 11           | 85         | 3        | 3        | 0         | 1   | 39       | 44   | 203   |
|                   | REAF - RESOURCE ADVISOR, FIRELINE                      | 6            | 66         | 5        | 1        | 0         | 1   | 47       | 70   | 200   |
|                   | RESL - RESOURCE UNIT LEADER                            | 20           | 41         | 2        | 0        | 0         | 10  | 34       | 27   | 134   |
|                   | RTCM - RETARDANT CREWMEMBER                            | 0            | 5          | 1        | 0        | 0         | 0   | 0        | 1    | 8     |
|                   | RXA1 – PRESCRIBDED FIRE AGENCY ADMINISTRATOR TYPE 1    | 0            | 3          | 2        | 1        | 0         | 0   | 0        | 2    | 11    |
|                   | RXA2 – PRESCRIBDED FIRE AGENCY ADMINISTRATOR TYPE 2    | 2            | 11         | 6        | 0        | 0         | 0   | 13       | 16   | 48    |
|                   | RXA3 – PRESCRIBDED FIRE AGENCY ADMINISTRATOR TYPE 3    | 0            | 0          | 0        | 0        | 0         | 0   | 0        | 2    | 4     |
|                   | RXB1 - PRESCRIBED FIRE BURN BOSS, TYPE 1               | 0            | 7          | 2        | 0        | 0         | 0   | 0        | 3    | 16    |
|                   | RXB2 - PRESCRIBED FIRE BURN BOSS, TYPE 2               | 12           | 46         | 11       | 2        | 0         | 1   | 81       | 96   | 253   |

| Req Category Name | Req Catalog Item Name                       | Place Direct | Place Down | Place Up | Retrieve | Send Back | UTF | No Place | Fill | Count |
|-------------------|---|--------------|------------|----------|----------|-----------|-----|----------|------|-------|
|                   | RXB3 - PRESCRIBED FIRE BURN BOSS, TYPE 3    | 4            | 16         | 4        | 1        | 0         | 2   | 18       | 24   | 71    |
|                   | RXCM - PRESCRIBED FIRE CREW MEMBER          | 0            | 0          | 0        | 0        | 0         | 0   | 0        | 4    | 8     |
|                   | RXM1 - Prescribed Fire Manager, TYPE 1      | 0            | 0          | 0        | 0        | 0         | 0   | 0        | 0    | 0     |
|                   | RXM2 - Prescribed Fire Manager, TYPE 2      | 0            | 0          | 0        | 0        | 0         | 0   | 0        | 0    | 0     |
|                   | RXMG - Prescribed Fire Manager              | 1            | 1          | 5        | 0        | 0         | 1   | 0        | 7    | 25    |
|                   | SCKN - STATUS CHECK-IN RECORDER             | 22           | 36         | 2        | 0        | 0         | 7   | 25       | 31   | 123   |
|                   | SEC1 - SECURITY SPECIALIST - LEVEL 1        | 5            | 332        | 23       | 8        | 0         | 28  | 31       | 66   | 493   |
|                   | SEC2 - SECURITY SPECIALIST - LEVEL 2        | 3            | 246        | 29       | 1        | 0         | 1   | 32       | 40   | 404   |
|                   | SECG - SECURITY GUARD (NOT LAW ENFORCEMENT) | 0            | 33         | 9        | 0        | 0         | 3   | 10       | 10   | 70    |
|                   | SECM - SECURITY MANAGER                     | 6            | 56         | 4        | 3        | 0         | 11  | 11       | 20   | 111   |
|                   | SEMG - SINGLE ENGINE AIR TANKER MANAGER     | 3            | 84         | 28       | 2        | 0         | 14  | 46       | 56   | 233   |
|                   | SHLR - SHORT HAULER                         | 6            | 6          | 1        | 0        | 0         | 0   | 0        | 7    | 35    |
|                   | SHLS - SHORT HAUL SPOTTER                   | 3            | 2          | 0        | 0        | 0         | 0   | 0        | 2    | 13    |
|                   | SITL - SITUATION UNIT LEADER                | 23           | 36         | 0        | 0        | 0         | 2   | 28       | 29   | 118   |
|                   | SMEC – SMALL ENGINE MECHANIC                | 0            | 1          | 0        | 0        | 0         | 0   | 0        | 0    | 1     |
|                   | SMKJ - SMOKEJUMPER                          | 30           | 467        | 191      | 5        | 0         | 10  | 552      | 500  | 1,804 |
|                   | SOA2 - ALL-HAZARDS SAFETY OFFICER TYPE 2    | 0            | 0          | 0        | 0        | 0         | 0   | 0        | 0    | 0     |
|                   | SOF1 - SAFETY OFFICER, TYPE 1               | 6            | 13         | 1        | 0        | 0         | 1   | 12       | 8    | 42    |
|                   | SOF2 - SAFETY OFFICER, TYPE 2               | 11           | 95         | 10       | 1        | 0         | 13  | 27       | 32   | 189   |
|                   | SOF3 - SAFETY OFFICER, TYPE 3 (ALL HAZARD)  | 1            | 10         | 0        | 0        | 0         | 0   | 0        | 1    | 13    |
|                   | SOFC - SAFETY OFFICER, COMPLEX              | 20           | 27         | 0        | 1        | 0         | 0   | 28       | 34   | 110   |
|                   | SOFF – SAFETY OFFICER FIELD                 | 0            | 2          | 0        | 0        | 0         | 0   | 0        | 0    | 2     |
|                   | SOFO – SAFETY OFFICER OCCUPATIONAL HEALTH   | 1            | 0          | 0        | 0        | 0         | 0   | 0        | 1    | 2     |
|                   | SOFR - SAFETY OFFICER, LINE                 | 7            | 153        | 15       | 2        | 0         | 2   | 36       | 45   | 284   |
|                   | SOPL - STRATEGIC OPERATIONAL PLANNER        | 3            | 28         | 3        | 0        | 0         | 3   | 0        | 7    | 54    |
|                   | SPOT - SMOKEJUMPER SPOTTER                  | 3            | 12         | 10       | 1        | 0         | 2   | 64       | 60   | 152   |
|                   | SPUL - SUPPLY UNIT LEADER                   | 15           | 51         | 1        | 1        | 0         | 2   | 17       | 22   | 109   |
|                   | STAM - STAGING AREA MANAGER                 | 0            | 35         | 0        | 0        | 0         | 0   | 0        | 0    | 35    |
|                   | STCR - STRIKE TEAM LEADER, CREW             | 0            | 6          | 0        | 0        | 0         | 1   | 10       | 10   | 27    |
|                   | STEN - STRIKE TEAM LEADER, ENGINE           | 3            | 35         | 1        | 1        | 0         | 1   | 0        | 2    | 55    |
|                   | STEQ - STRIKE TEAM LEADER, HEAVY EQUIPMENT  | 0            | 8          | 0        | 0        | 0         | 0   | 0        | 0    | 8     |
|                   | STOP – SPECIALTY TRACKED EQUIPMENT OPERATOR | 0            | 2          | 0        | 0        | 0         | 0   | 0        | 1    | 3     |
|                   | STPS - STRUCTURAL PROTECTION SPECIALIST     | 0            | 3          | 2        | 0        | 0         | 3   | 0        | 1    | 9     |
|                   | TFLD - TASK FORCE LEADER                    | 48           | 533        | 43       | 14       | 0         | 5   | 249      | 355  | 1,352 |
|                   | THSP - TECHNICAL SPECIALIST                 | 30           | 359        | 94       | 9        | 0         | 6   | 210      | 262  | 994   |
|                   | TIME - TIME UNIT LEADER                     | 12           | 26         | 1        | 1        | 0         | 1   | 27       | 25   | 93    |
|                   | TNSP - TRAINING SPECIALIST                  | 1            | 6          | 3        | 0        | 0         | 5   | 0        | 7    | 24    |
|                   | TPIA - TRACTOR PLOW OPERATOR INITIAL ATTACK | 0            | 14         | 0        | 0        | 0         | 0   | 0        | 0    | 14    |

| Req Category Name       | Req Catalog Item Name                            | Place Direct | Place Down    | Place Up     | Retrieve   | Send Back | UTF        | No Place      | Fill          | Count         |
|-------------------------|--|--------------|---------------|--------------|------------|-----------|------------|---------------|---------------|---------------|
|                         | TPOP - TRACTOR PLOW OPERATOR                     | 0            | 3             | 0            | 0          | 0         | 0          | 0             | 0             | 3             |
|                         | TTOP - TERRA TORCH OPERATOR                      | 0            | 3             | 4            | 0          | 0         | 1          | 0             | 5             | 18            |
|                         | UASD - UNMANNED AIRCRAFT SYSTEM, DATA SPECIALIST | 4            | 3             | 1            | 0          | 0         | 0          | 0             | 2             | 15            |
|                         | UASL - UNMANNED AIRCRAFT SYSTEM, MODULE LEADER   | 16           | 0             | 0            | 1          | 0         | 0          | 0             | 1             | 34            |
|                         | UASM - UNMANNED AIRCRAFT SYSTEM, MANAGER         | 0            | 0             | 0            | 0          | 0         | 0          | 0             | 0             | 0             |
|                         | UASP - UNMANNED AERIAL SYSTEMS PILOT             | 31           | 47            | 11           | 5          | 0         | 1          | 55            | 64            | 220           |
|                         | UTVO - UTILITY TERRAIN VEHICLE OPERATOR          | 0            | 2             | 2            | 0          | 0         | 2          | 0             | 5             | 14            |
|                         | WFA1 – WILDFIRE AGENCY ADMINISTRATOR TYPE 1      | 0            | 12            | 3            | 1          | 0         | 2          | 0             | 6             | 32            |
|                         | WFA2 – WILDFIRE AGENCY ADMINISTRATOR TYPE 2      | 1            | 6             | 1            | 0          | 0         | 3          | 0             | 7             | 27            |
|                         | WFA3 – WILDFIRE AGENCY ADMINISTRATOR TYPE 3      | 1            | 2             | 0            | 0          | 0         | 1          | 0             | 7             | 18            |
|                         | WHHR - WAREHOUSE MATERIALS HANDLER               | 0            | 14            | 2            | 0          | 0         | 1          | 0             | 3             | 28            |
|                         | WHLR - WAREHOUSE MATERIALS HANDLER LEADER        | 1            | 4             | 2            | 1          | 0         | 0          | 0             | 3             | 14            |
|                         | WTOP - WATER TENDER OPERATOR                     | 0            | 0             | 0            | 0          | 0         | 0          | 34            | 33            | 67            |
| <b>Overhead Summary</b> |  | <b>3,326</b> | <b>10,881</b> | <b>1,604</b> | <b>351</b> | <b>53</b> | <b>966</b> | <b>20,991</b> | <b>23,368</b> | <b>62,508</b> |

**\* END OF REPORT \***